

# **E-TON**

## **PARTS LIST MANUAL**



**CXL 150**

## CONTENTS

### PARTS ITEM

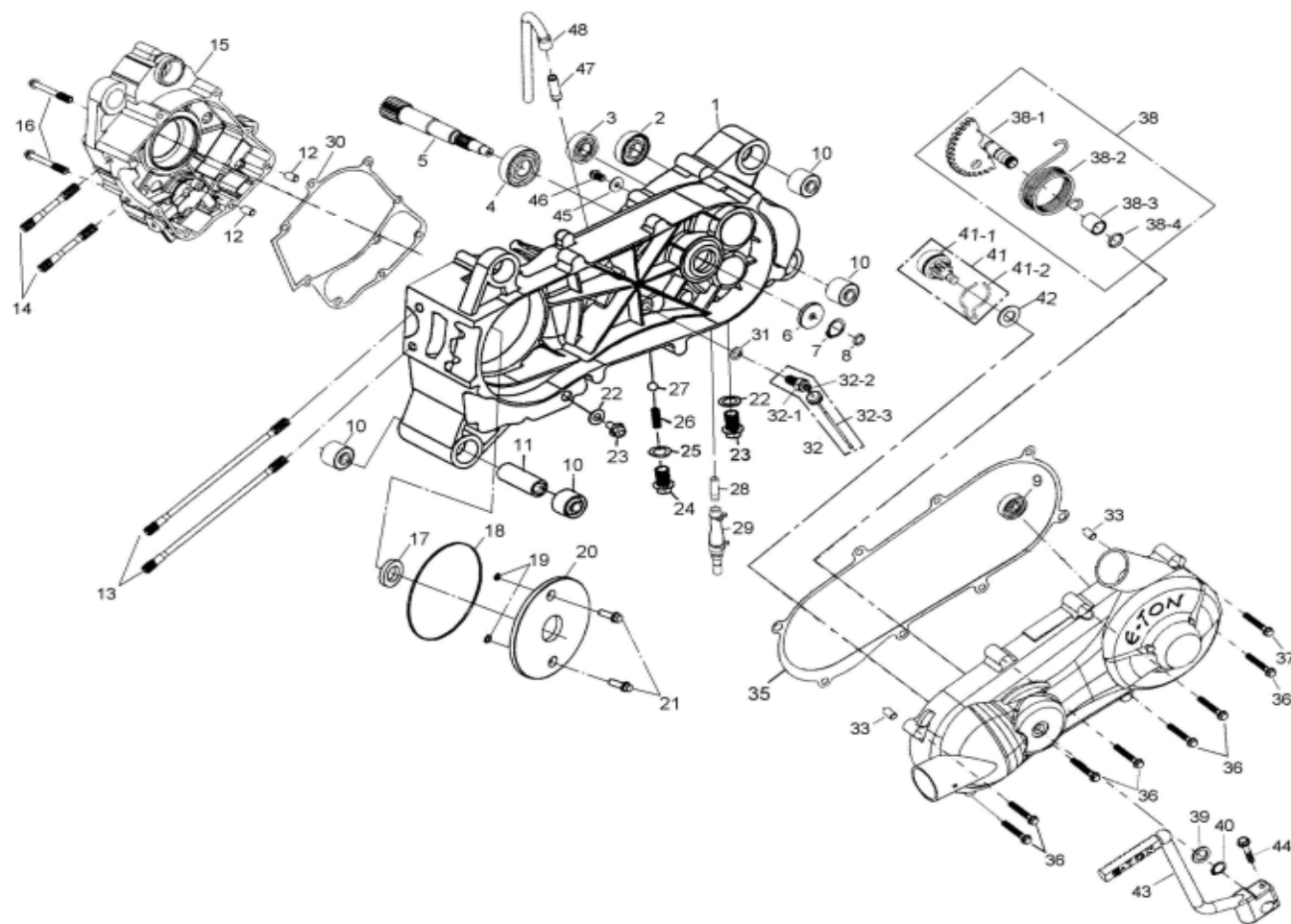
- 01 CRANK CASE, L COVER, SPINDLE ASSY
- 02 CRANK SHAFT, PISTON, CYLINDER, TENSIONER
- 03 OIL PUMP, STARTING MOTOR
- 04 RIGHT CRANK CASE COVER, GENERATOR
- 05 COVER HEAD, HEAD, CAM SHAFT, VALVE
- 06 FAN COVER, SHROUD
- 07 DRIVEN RULLEY (CVT)
- 08 TRANSMISSION
- 09 GEAR SHAFT LEVER, SAFETY SWITCH
- 10 AIR CLEANER
- 11 CARBURETOR
- 12 OIL COOLER
- 13 ENGINE
- 14 MUFFLER
- 15 FRAME
- 16 FENDER
- 17 SWING ARM
- 18 SEAT
- 19 FUEL TANK
- 20 SUSPENSION
- 21 FRONT WHEEL
- 22 REAR WHEEL
- 23 FRONT BRAKE SYSTEM
- 24 REAR BRAKE SYSTEM
- 25 HANDLE BAR
- 26 BUMPER, FOOTREST
- 27 REAR WHEEL AXLE
- 28 STEERING
- 29 ELECTRICAL EQUIPMENT
- 30 PACKING CASE,EXTERNAL
- 31 ACCESSORIES

曲軸箱，曲軸箱蓋，腳起動組  
 曲柄，活塞，汽缸，拉力桿  
 機油pump，起動馬達  
 右曲軸箱蓋，發電機  
 汽缸頭蓋，汽缸頭，凸輪軸，閥門  
 風扇蓋，引擎罩蓋  
 CVT驅動皮帶輪  
 傳動系  
 變檔桿，安全開關  
 空氣濾清器  
 化油器  
 機油冷卻管組  
 引擎  
 排氣管  
 車架  
 擋泥板  
 A 臂，後叉  
 座墊  
 汽油箱  
 避震器  
 前輪  
 後輪  
 前煞車系統  
 後煞車系統  
 手把  
 保護桿，置腳踏板  
 後輪軸  
 轉向系統  
 電裝品  
 包裝外箱  
 配件

**NOTE** " \* "& the gray area: not available

"N/A": This part is not in used for your version.

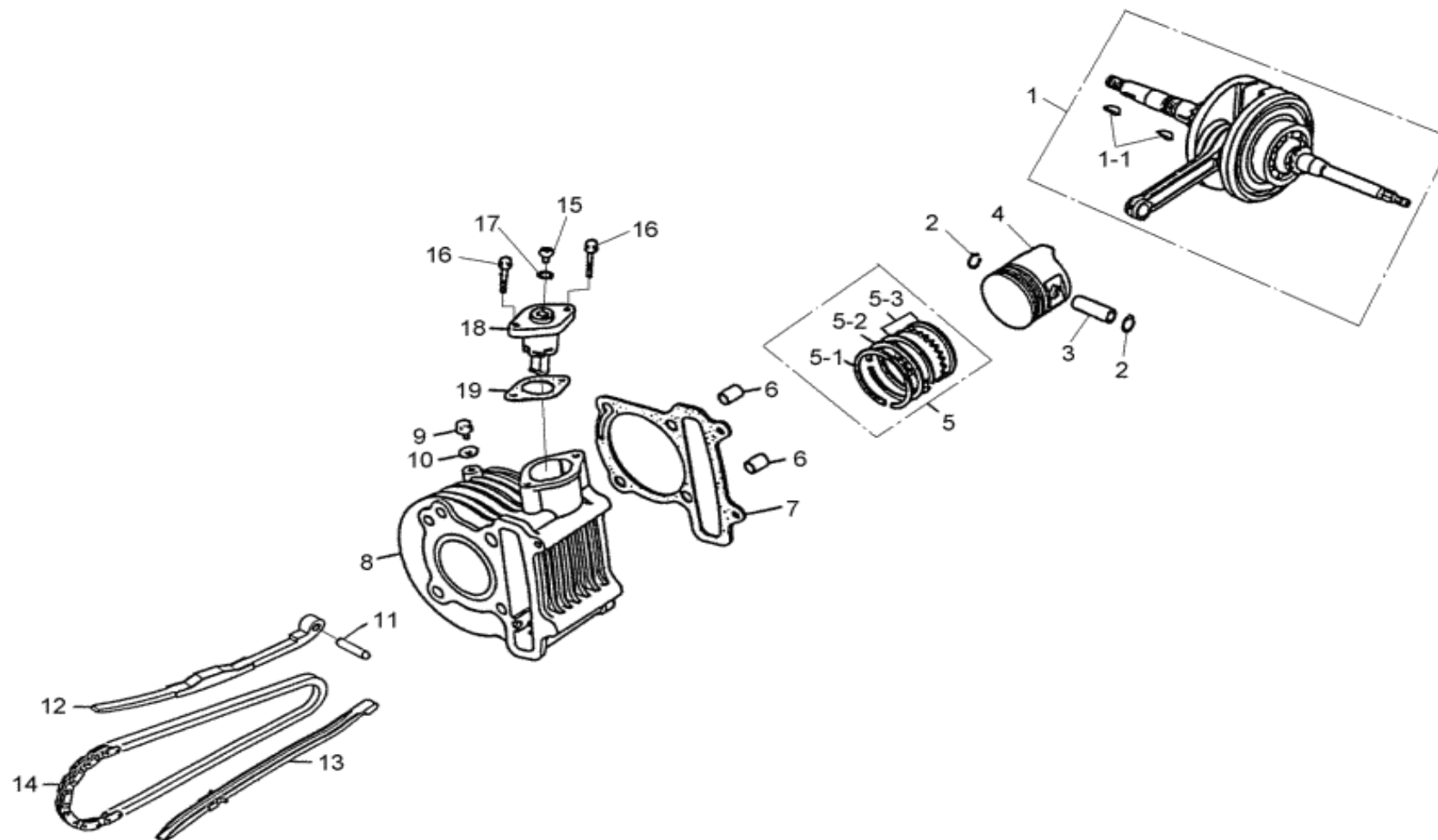
## 1. CRANK CASE, L COVER, SPINDLE ASSY.



ITEM	PART NO.	NAME	QTY	品名	VIN NO	U.S	HL	A.T	TW	C.A
	1	CRANK CASE, L COVER, SPINDLE ASSY.								
	1-1	A1200-V30-0900	1	左曲軸箱						
	1-2	I6100-62030	1	NO:013 滾珠軸承						
	1-3	I6100-62020	1	NO:014 滾珠軸承						
	1-4	I6100-62043	1	NO:012 滾珠軸承						
	1-5	B3411-V30-0000	1	驅動軸		N/A	N/A	N/A	N/A	N/A
7		B3411-V30-9000	1	驅動軸	3A010360					
	1-6	I1202-A04-0000	1	油封 (20×32×6)						
8	1-7	I4510-20000	1	NO:010 C型扣環						
	1-8	I4608-09424	1	NO:012 O型環						
	1-9	I6150-62000-10	1	NO:035 滾珠軸承						
	1-10	A1103-V30-0000	4	引擎吊架襯套						
	1-11	A8255-V30-0000	1	襯套(A)						
	1-12	I4301-08140	2	NO:008 定位銷						
	1-13	I0032-08208-0H	2	NO:005 汽缸螺栓(B)						
	1-14	I0031-08200-0H	2	NO:007 汽缸螺栓(A)						
	1-15	A1100-V30-0900	1	右曲軸箱(油冷)						
	1-16	I6001-06050-0H	2	NO:005 六角帶頭螺栓						
	1-17	I1201-A04-9000	1	油封 (19.8×30.5)						
	1-18	I4608-10720	1	NO:025 O型環						
	1-19	I4608-06017	2	NO:031 O型環						
4	1-20	A1207-A14-0001	1	左曲軸箱板						
	1-21	I6001-06020-0H	2	NO:001 六角帶頭螺栓						
	1-22	I4104-12120	2	NO:049 平墊圈						
	1-23	I2800-12015-0C	2	NO:002 洩油塞頭螺栓						
	1-24	B4305-V30-0000	1	檔位固定螺栓						
	1-25	I4104-14210	1	NO:057 平墊圈						
	1-26	B4306-V30-0000	1	檔位固定彈簧						
	1-27	B4307-V30-0000	1	鋼珠						
3	1-28	A1206-V30-0000	1	排水管接頭						
	1-29	A7232-V30-0000	1	排水管						
	1-30	A1192-A08-0000	1	曲軸箱墊片						

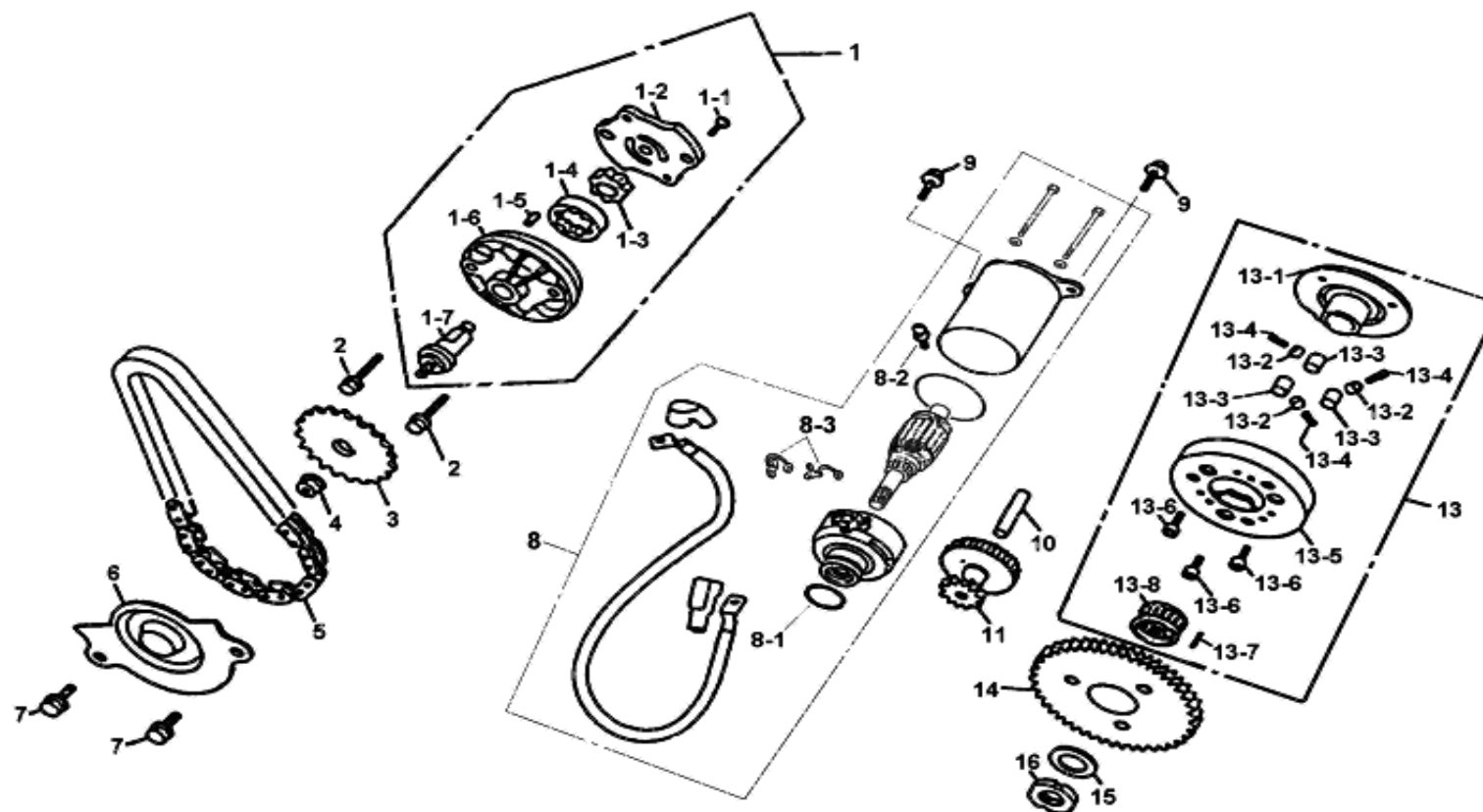
ITEM	PART NO.	NAME	Q'TY	品名	VIN NO	U.S	H.L	A.T	TW	C.A
1		CRANK CASE, L COVER, SPINDLE ASSY.								
1-31	I4104-10010	WASHER	1	NO:058 平墊圈						
3 1-32	C5750-V30-0000	NEUTRAL SWITCH ASSY	1	空檔接點開關組						
3 *1-32-1	C5752-V30-0000	NEUTRAL SWITCH CONNECTER	1	空檔開關接頭						
*1-32-2	I3500-04006	SCREW, CROSS RECESS HEAI	1	圓頭十字螺絲						
*1-32-3	C5751-V30-0000	WIRING COMP	1	接線組						
1-33	I4301-10140	DOWEL PIN (10×14)	2	NO:009 定位銷						
1-34	A1341-V30-0300	COVER CRANK CASE L	1	左曲軸箱側蓋						
1-35	A1395-V30-0000	GASKET COVER CRANK CASE	1	左曲軸箱側蓋墊片						
1-36	I6001-06040-0C	BOLT, HEXAGON HEAD	7	NO:024 六角帶頭螺栓						
1-37	I6001-06040-0H	BOLT, HEXAGON HEAD	1	NO:004 六角帶頭螺栓						
1-38	B825A-V30-0000	SPINDLE ASSY. KICK STARTER	1	起動軸總成						
1-38-1	B8250-A14-0001	SPINDLE COMP KICK STARTER	1	起動軸組						
1-38-2	B8281-A14-0000	SPINDLE KICK RETURN	1	起動桿彈簧						
1-38-3	B8253-V30-0000	BUSH KICK SPINDLE	1	起動軸襯套						
1-38-4	I4608-13824A	O-RING	1	NO:046 O 型環						
1-39	I4104-14520A	WASHER	1	NO:025 平墊圈						
1-40	I4510-14000	CIRCLIP EX	1	NO:002 C 型扣環						
1-41	B823A-A14-0001	GEAR ASSY .STARTER IDLE	1	起動惰輪總成						
*1-41-1	B8230-A14-0001	GEAR COMP KICK DRIVEN	1	起動惰齒輪組						
*1-41-2	B8223-A14-0000	SPG KICK DRIVEN GEAR	1	起動摩擦彈簧						
1-42	I4104-10710	WASHER	1	NO:052 平墊圈						N/A N/A N/A N/A N/A
1-42	I4102-10505	WASHER	1	NO:052 平墊圈	V30J-2A008040					
1-43	B8300-V30-9000	ARM ASSY. KICK STARTER	1	起動桿組						
1-44	I5701-06035-0C	BOLT , HEXAGON HEAD	1	NO:012 六角帶頭螺栓						
1-45	I4104-06515A	WASHER	1	NO:085 平墊圈						
1-46	I6001-06012-0H	BOLT , HEXAGON HEAD	1	NO:030 六角帶頭螺栓						
1-47	A1106-A00-0000	CONNECTER TUBE BREATHER	1	呼吸管接頭						
1-48	A1221-V30-0000	TUBE BREATHER	1	呼吸管						
1-49		CANCEL,PREARRANGE		取消預留						

## 2. CRANK SHAFT 、 PISTON 、 CYLINDER 、 TENSIONER



ITEM	PART NO.	NAME	Q'TY	品名	VIN NO	U.S	H.L	A.T	TW	C.A
2		CRANKSHAFT, PISTON, CYLINDER, TENSIONER								
2-1	A3000-V30-0001	CRANK SHAFT COMP	1	曲柄軸組	JIEV304A014914					
2-1-1	I4401-25046	WOODRUFF KEY	2	NO:001 半圓鍵						
2-2	I4601-15000	CLIP,PISTON PIN 15mm	2	NO:001 活塞銷扣環						
2-3	A3111-A08-0000	PIN,PISTON	1	活塞銷						
2-4	A3101-A08-0000	PISTON	1	活塞						
2-5	A3011-A08-0000	RING SET,PISTON	1	活塞環組						
*2-5-1	A3121-A08-0000	RING PISTON TOP	1	第一活塞環						
*2-5-2	A3131-A08-0000	RING PISTON 2ND	1	第二活塞環						
*2-5-3	A3141-A08-0000	RING PISTON OIL	1	刮油活塞環						
2-6	I4301-10140	PIN DOWEL (10×14)	2	NO:009 定位銷						
2-7	A2191-A08-0000	GASKET CYLINDER	1	汽缸墊片						
2-8	A2100-A08-0000	CYLINDER COMP	1	汽缸組						
2-9	I5801-06012-0C	BOLT, HEXAGON HEAD	1	NO:022 六角帶頭螺栓						
2-10	I4104-06512	WASHER	1	NO:043 平墊圈						
2-11	I4301-06240	KNOCK PIN	1	NO:012 定位銷						
2-12	A4510-A04-0000	TENSIONER CAM CHAIN	1	鏈條張力導板						
2-13	A4610-A04-0000	GUIDE COMP CAM CHAIN	1	鏈條導板						
2-14	A4401-A07-0000	CHAIN CAM	1	凸輪軸驅動鏈條						
2-15	I3700-06005	SCREW, OVAL TAP	1	NO:001 扁圓頭十字螺絲						
2-16	I6001-06020-0H	BOLT , HEXAGON HEAD	2	NO:001 六角帶頭螺栓						
2-17	I4608-09515	O-RING	1	NO:019 O 型環						
2-18	A4520-A04-0000	LIFTER ASSY .TENSIONER	1	鏈條調整器						
2-19	A4523-A04-0000	GASKET TENSIONER LIFTER	1	鏈條調整器墊片						

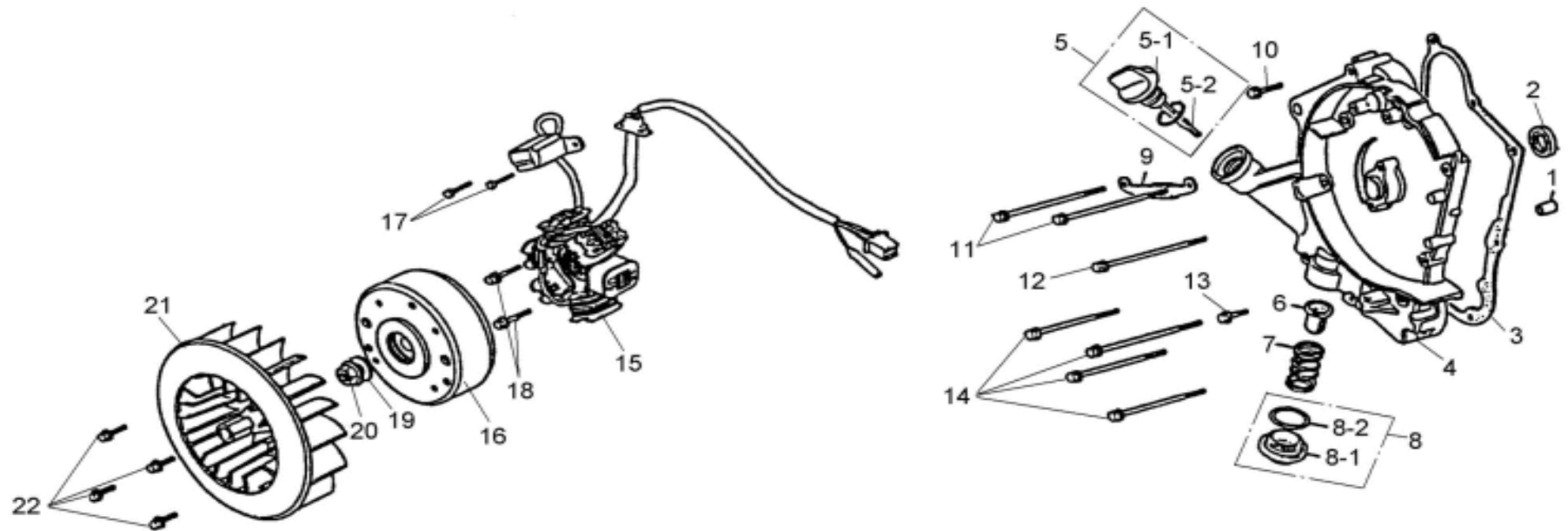
### 3.OIL PUMP \ STARTONG MOTOR





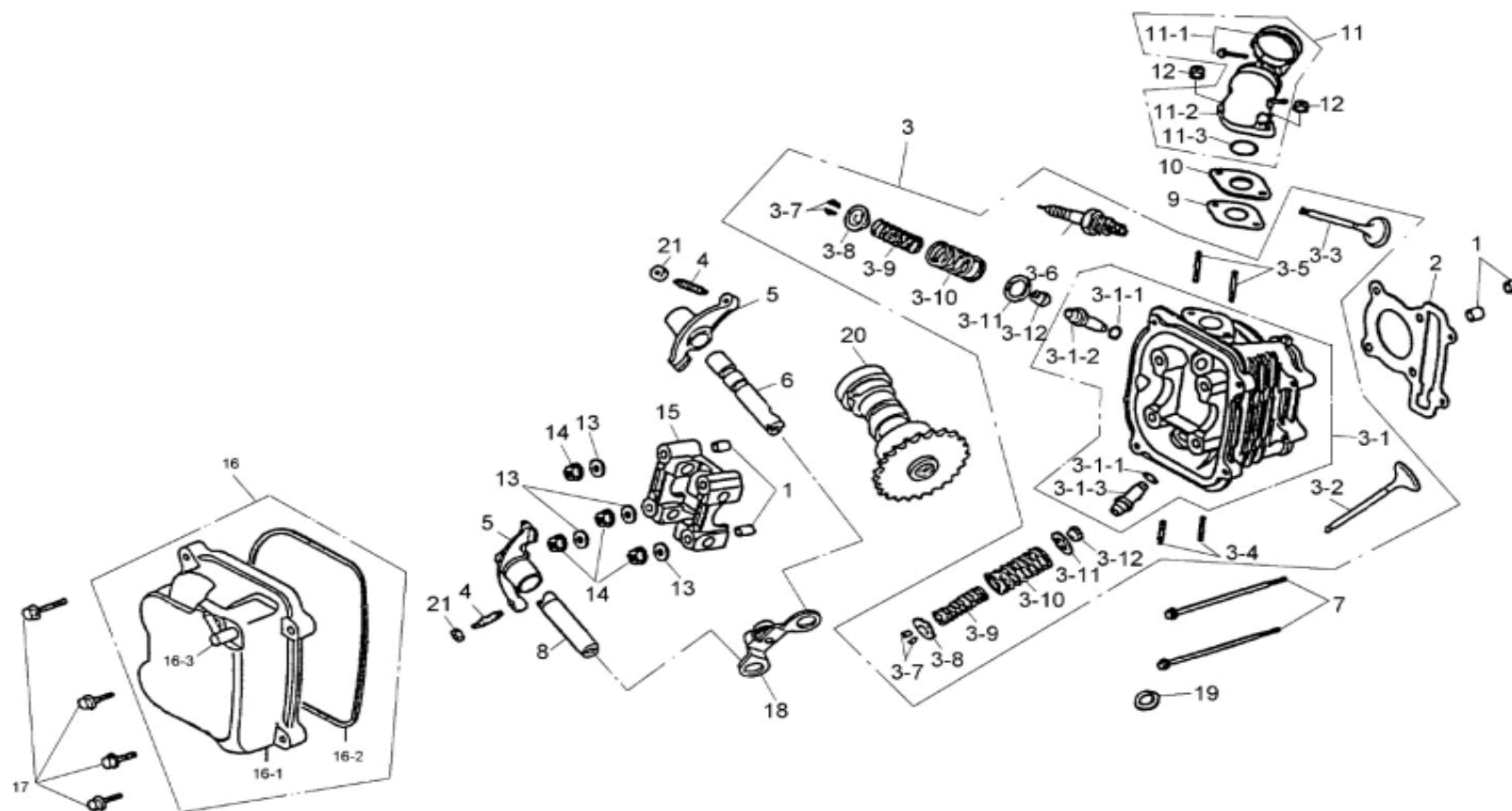
ITEM	PART NO.	NAME	Q'TY	品名	VIN NO	U.S	H.L	A.T	TW	C.A
3		OIL PUMP, STARTING MOTOR								
3-1	A5100-A07-0000	PUMP ASSY. OIL	1	機油泵總成						
*3-1-1	I3500-03010-0G	SCREW,CROSS RECESS HEAD (3×10)	1	NO:001 圓頭十字螺絲3×10						
*3-1-2	A5116-A04-0000	PLATE OIL PUMP	1	機油泵底板						
*3-1-3	A5331-A07-0000	ROTOR OIL PUMP INNER	1	機油泵內轉子						
*3-1-4	A5332-A07-0000	ROTOR OIL PUMP OUTER	1	機油泵外轉子						
*3-1-5	I4303-04065	PIN C DOWEL (4×6.5)	1	NO:006 定位銷						
*3-1-6	A5101-A07-0000	BODY OIL PUMP	1	機油泵本體						
*3-1-7	A5132-A04-0000	SHAFT OIL PUMP	1	機油泵軸						
3-2	I3600-06030-0H	SCREW ,CROSS RECESS HEAI	2	NO:003 平頭十字螺絲						
3-3	A5133-A04-0000	SPROCKET OIL PUMP DRIVEN	1	機油泵驅動鏈輪						
3-4	I4050-0600G	NUT 6mm	1	螺帽6mm						
3-5	A5141-A04-0000	CHAIN OIL PUMP	1	機油泵驅動鏈條						
3-6	A5711-A04-0000	SEPARATOR OIL	1	分油器						
3-7	I6001-06012-0H	BOLT, HEXAGON HEAD	2	NO:030 六角帶頭螺栓						
3-8	C1200-V30-0000	MOTOR ASSY.START	1	起動馬達組						
3-8-1	I1309-24031	O-RING (24.4×3.1)	1	O型環24.4×3.1						
3-8-2	I3892-04006-08	SCREW WASH (4×6)	2	螺絲附墊圈4×6						
1△ 3-8-3	C1221-A04-0000	CARBON BRUSH	2	碳刷						
3-9	I6001-06016-0C	BOLT , HEXAGON HEAD	2	NO:029 六角帶頭螺栓						
3-10	B8102-A04-0000	SHAFT STARTER REDUCTION GEAR	1	起動減速齒輪軸						
3-11	B8101-A04-0000	GEAR STARTER REDUCTION	1	起動減速齒輪						
3-12		CANCEL,PREARRANGE		取消預留						
3-13	B812A-A04-0000	OUTER ASSY .STARTING CLUTCH	1	單向傳動器總成						
3-13-1	B8125-A04-0000	FLANGE STARTING CLUTCH	1	起動離合器凸緣						
3△ 3-13-2	B8124-A04-0000	CAP STARTING CLUTCH ROLLER SPRING	3	滾子彈簧蓋						
3-13-3	I6220-A0100	ROLLER	3	NO:003 滾筒						
3-13-4	B8127-A04-0000	SPRING STARTING CLUTCH ROLLER	3	滾子彈簧						
3-13-5	B8120-A04-0000	OUTER COMP STARTING CLUTCH	1	單向傳動器本體組						
3-13-6	I0001-06012	BOLT, SOCKET PAN 6×12	3	圓頭承窩螺栓						
3-13-7	I4303-05060	KNOCK PIN	1	NO:005 定位銷						
3-13-8	I1110-2832168	BEARING, NEEDLE	1	NO:012 滾針軸承						
3-14	B8110-A04-0000	GEAR COMP STARTING CLUTCH	1	起動離合器齒輪組						
3-15	I4104-22225	WASHER	1	NO:047 平墊圈						
3-16	I0231-A04-0000	NUT LOCK	1	鎖緊螺帽						

## 4. RIGHT CRAANK CASE COVER, GENERATOR



ITEM	PART NO.	NAME	Q'TY	品名	VIN NO	U.S	H.L	A.T	TW	C.A
4		RIGHT CRAANK CASE COVER, GENERATOR								
4-1	I4301-08140	PIN DOWER (8×14)	2	NO:008 定位銷						
4-2	I1201-A04-9000	OIL SEAL (19.8×30×5)	1	油封(19.8×30×5)						
4-3	A1394-A04-0000	GASKET R CRANK CASE COVER	1	右曲軸箱側蓋墊片						
4-4	A1331-V30-0900	COVER R CRANK CASE	1	右曲軸箱側蓋						
3△ 4-5	A5650-A04-0000	GAUGE ASSY. OIL LEVEL	1	機油尺組						
4-5-1	A5651-A04-0000	GAUGE OIL LEVEL	1	機油尺						
4-5-2	I4608-12625	O-RING (18×3.5)	1	NO:020 O 型環						
4-6	A5421-A00-0000	SCREEN,OIL FILTER	1	濾油網						
4-7	A5426-A04-0000	SPRING OIL FILTER SCREEN	1	濾油網彈簧						
4△ 4-8	A2360-A04-0001	HOLE CAP TAPPET ASSY.	1	調整塞頭組						
4-8-1	A2361-A04-0000	CAP TAPPET ADJUSTING HOLE	1	濾油網調整塞頭						
4-8-2	I4608-30832	O-RING	1	NO:017 O 型環						
4-9	C2961-A04-0000	CLAMPER A.C.G GENERATOR	1	A.C.G線夾						
4-10	I6001-06040-0C	BOLT , HEXAGON HEAD	1	NO:024 六角帶頭螺栓						
4-11	I6001-06110-0C	BOLT , HEXAGON HEAD	2	NO:026 六角帶頭螺栓						
4-12	I6001-06100-0H	BOLT , HEXAGON HEAD	1	NO:010 六角帶頭螺栓						
4-13	I6001-06032-0H	BOLT , HEXAGON HEAD	1	NO:009 六角帶頭螺栓						
4-14	I6001-06095-0C	BOLT , HEXAGON HEAD	4	NO:025 六角帶頭螺栓						
4-15	C1120-V30-0000	STARTOR COMP(CDI)	1	定子線圈						
9△ 4-16	C1120-V30-9000	STARTOR COMP(CDI)	1	定子線圈	JIEV304A014594					
4-17	C1110-A04-0000	FLYWHEEL COMP	1	飛輪組						
9△ 4-18	C1110-V30-0000	FLYWHEEL COMP	1	飛輪組	JIEV304A014594					
4-19	I3412-05014-0H	BOLT, HEXAGON HEAD WITH WASHER(5×14)	2	NO:001 六角螺栓+波形墊圈						
4-20	I6001-06020-0H	BOLT , HEXAGON HEAD	2	NO:001 六角帶頭螺栓						
4-21	I4104-12522	WASHER	1	NO:046 平墊圈						
4-22	I4050-12110-0H	NUT , HEXAGON HEAD	1	NO:001 六角帶頭螺帽						
4-23	A9510-A04-0000	FAN COMP COOLING	1	冷卻風扇組						
4-24	I6001-06018-0H	BOLT , HEXAGON HEAD	4	NO:007 六角帶頭螺栓						

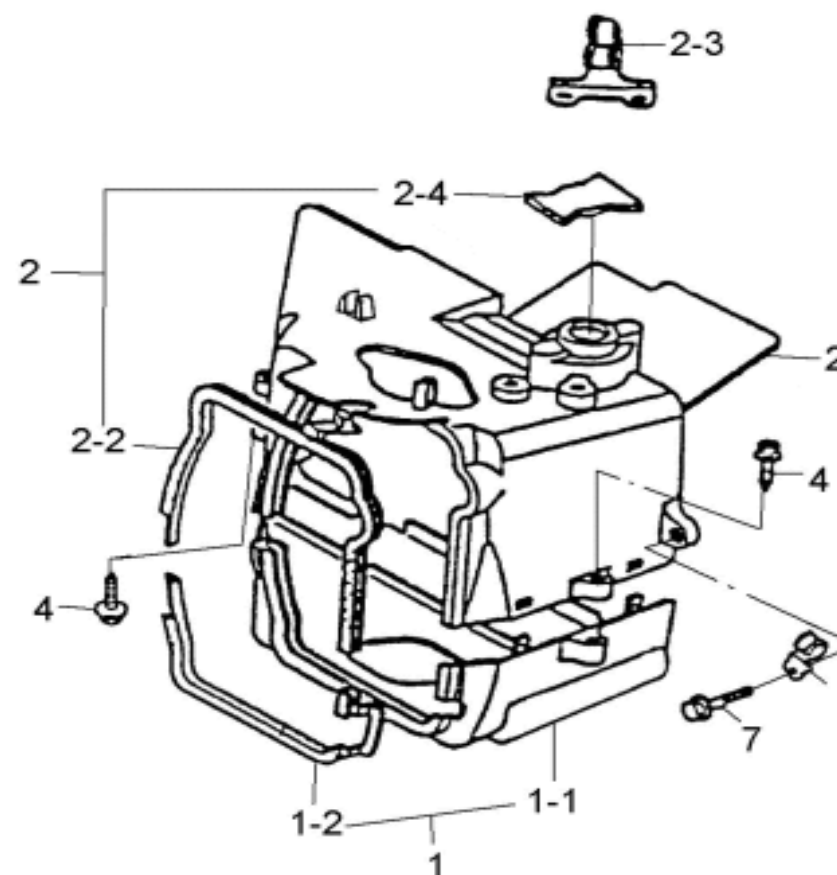
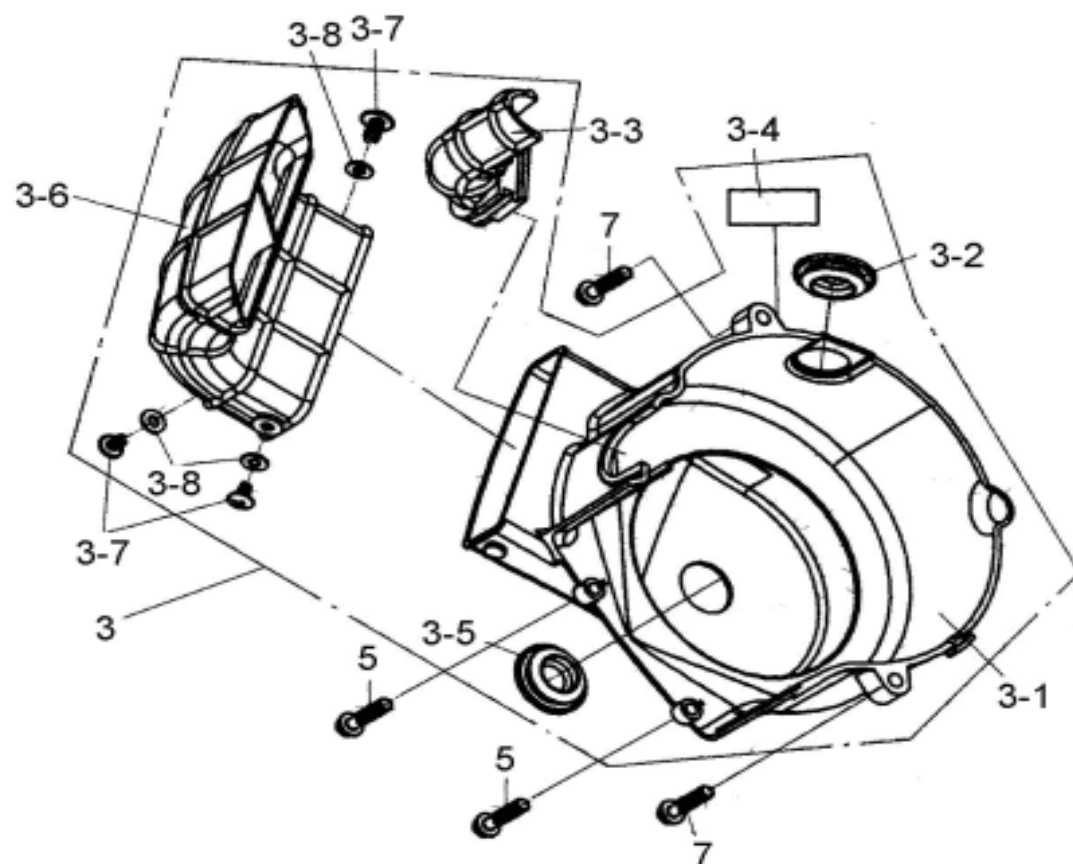
## 5. HEAD COVER 、 HEAD 、 CAM SHAFT 、 VALVE



ITEM	PART NO.	NAME	Q'TY	品名	VIN NO	U.S	H.L	A.T	TW	C.A
5		COVER HEAD, HEAD, CAM SHAFT, VALVE								
5-1	I4301-10140	DOWEL PIN (10×14)	4	NO:009 定位銷						
5-2	A2251-A08-0000	GASKET CYLINDER HEAD	1	汽缸頭墊片						
4△ 5-3	A220A-A08-0001	HEAD CYLINDER ASS'Y	1	汽缸頭總成						
4△ 5-3-1	A2200-A08-0001	HEAD COMP CYLINDER	1	汽缸頭組						
4△ *5-3-1-1	I4608-09016	O-RING	2	NO:018 O 型環						
4△ *5-3-1-2	A2237-A04-0000	GUIDE IN VALVE	1	進氣閥導管						
4△ *5-3-1-3	A2245-A04-0000	GUIDE EX VALVE	1	排氣閥導管						
4△ 5-3-2	A4721-A08-0000	VALVE EXHAUST	1	排氣閥						
4△ 5-3-3	A4711-A08-0000	VALVE INLET	1	進氣閥						
4△ 5-3-4	I2900-06016-0A	STUD BOLT	2	NO:003 螺樁						
4△ 5-3-5	I2900-06050-0A	STUD BOLT	2	NO:001 螺樁						
4△ 5-3-6	I8000-A04-0000	SPARK PLUG (C7HSA)	1	火星塞C7HSA						
4△ 5-3-7	A4781-A04-0000	COTTER VALVE	4	楔鍵						
4△ 5-3-8	A4771-A04-0000	RETAINER VALVE SPG	2	閥彈簧固定片						
4△ 5-3-9	A4761-A07-0000	SPG VALVE INNER	2	閥門彈簧(內)						
4△ 5-3-10	A4751-A07-0000	SPG VALVE OUTER	2	閥門彈簧(外)						
4△ 5-3-11	I4104-16508	SEAT VALVE SPG OUTER	2	NO:071 平墊圈						
4△ 5-3-12	A2209-A04-0000	SEAL VALVE STEM	2	閥頭油封						
4△ 5-4	I0012-A04-0000	SCREW TAPPET ADJUSTING	2	間隙調整螺絲						
4△ 5-5	A4431-A07-0001	ARM VALVE ROCKER	2	進氣搖臂						
4△ 5-6	A4450-A04-0000	SHAFT COMP IN ROCKET ARM	1	進氣閥搖臂軸組						
5-7	I6001-06100-0H	BOLT, HEXAGON HEAD	2	NO:010 六角帶頭螺栓						
4△ 5-8	A4452-A04-0000	SHAFT EX ROCKET ARM	1	排氣閥搖臂軸						

ITEM	PART NO.	NAME	Q'TY	品名	VIN NO	U.S	H.L	A.T	TW	C.A
5		COVER HEAD, HEAD, CAM SHAFT, VALVE								
5-9	A6201-A04-0000	GASKET CARB INSULATOR	1	隔熱板墊片						
5-10	A6211-A04-0000	INSULATOR CARB	1	化油器隔熱板						
5-11	A711A-V30-0000	PIPE ASSY. INLET	1	化油器接頭總成						
5-11-1	A7256-V30-0000	BAND INSULATOR	1	連接管固定帶						
5-11-2	A7110-A07-0000	PIPE COMP INLET	1	化油器接頭組						
5-11-3	I4608-27020	O-RING	1	NO:016 O 型環						
5-12	I4050-0600G	NUT FLANGE 6mm(c)	2	螺帽6mm						
4△ 5-13	I4101-08523	WASHER	4	NO:054 平墊圈						
4△ 5-14	I4050-08075-0H	NUT, HEXAGON HEAD	4	NO:002 六角帶頭螺帽						
4△ 5-15	A2211-A04-0000	HOLDER SHAFT	1	凸輪軸座						
3△ 5-16	A230A-A04-0000	COVER ASSY. HEAD	1	汽缸頭蓋總成						
4△ 8△ 5-16-1	A2301-A04-0001	COVER HEAD	1	汽缸頭蓋						
4△ 9△ 5-16-2	A2391-A04-0000	GASKET COVER HEAD CYLINDER	1	汽缸頭蓋墊片						
4△ 5-16-3	A2305-A04-0000	JOINT COMP BREATHER	1	接頭組						
4△ 5-17	I6001-06025-0C	BOLT, HEXAGON HEAD	4	NO:022 六角帶頭螺栓						
4△ 5-18	A4150-A04-0000	PLATE COMP STOPPER	1	制止片組						
4△ 5-19	A8291-A04-0000	GASKET EXHAUST PIPE	1	排氣管墊片						
5-20	A4100-A07-0001	SHAFT COMP CAM	1	凸輪軸組						
5-21	I4001-050K0	NUT HEXAGON HEAD	2	NO:007 六角螺帽						

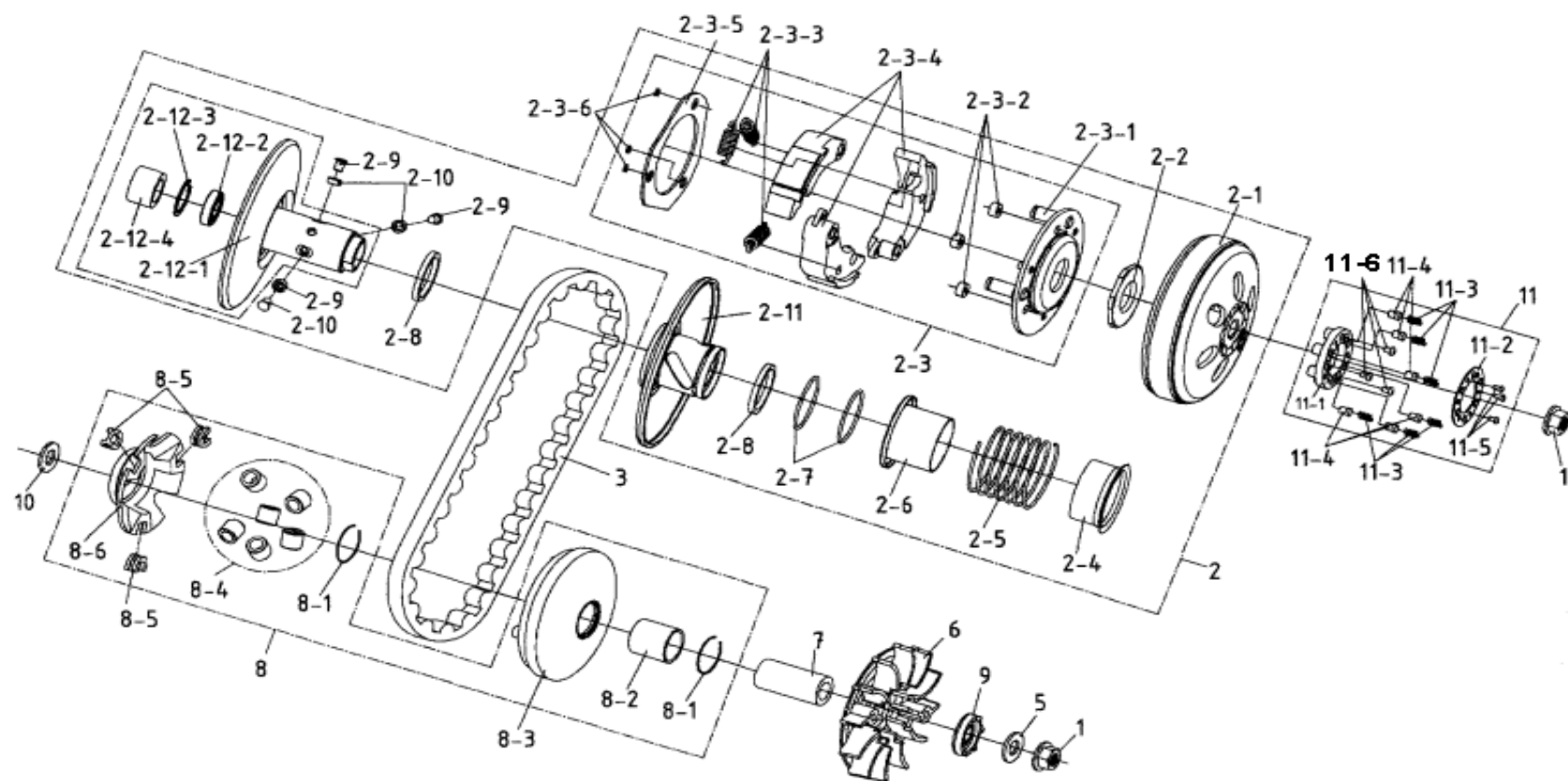
## 6. FAN COVER、SHROUD



ITEM	PART NO.	NAME	Q'TY	品名	VIN NO	U.S	H.L	A.T	TW	C.A
6		FAN COVER, SHROUD								
3△ 6-1	A9620-A07-0001	SHROUD COMP A	1	罩蓋A組						
6-1-1	A9621-A07-0000	SHROUD A	1	罩蓋A						
6-1-2	A9625-A04-0000	SEAL SHROUD A	1	密封墊圈(A)						
6-2	A963A-V30-0001	SHROUD COMP B	1	罩蓋B組總成						
4△ 6-2-1	A9630-V30-0000	SHROUD COMP B	1	罩蓋B組						
6-2-2	A9635-A04-0000	SEAL SHROUD B	1	密封墊圈(B)						
6-2-3	A1384-V30-0000	CLAMPER BREATHER TUBE	1	通氣管夾						
6-2-4	A9633-A04-0000	GROMMET SHROUD(B)	1	索環(B)						
6-3	A961A-V30-0000	COVER ASSY. FAN	1	冷卻風扇蓋總成	1A006349					
6-3-1	A9610-V30-0000	COVER COMP FAN	1	冷氣風扇蓋組						
6-3-2	G0529-A04-0000	GROMMEET B SIDE PANEL	1	橡皮塞						
6-3-3	A9615-A04-0000	DUCT CARBURETOR COOLING	1	化油器冷卻導管						
6-3-4	H7541-V30-0000	LABEL OIL CAP	1	機油油量標籤						
6-3-5	G0529-V30-0000	GROMMEET B SIDE PANEL	1	橡皮塞						
6-3-6	A9616-V30-0000	DUCT INLET	1	進氣導管						
6-3-7	I3902-304B0	SCREW TAPPING	3	圓頭十字自攻螺絲						
6-3-8	I4101-04508	WASHER	3	平墊圈						
6-4	I3904-316B0	BOLT, HEXAGON HEAD TAPPING	2	NO:001 六角帶頭十字自攻螺絲						
6-5	I3500-05025-0G	SCRW,BUTTON HEAD CAP	2	NO:009 圓頭螺絲						
6-6	A1385-V30-0000	CLAMPER CARB DRAIN TUBE	1	溢油管夾						
6-7	I6001-06025-0C	BOLT,HEXAGON HEAD	3	NO:022 六角帶頭螺栓						



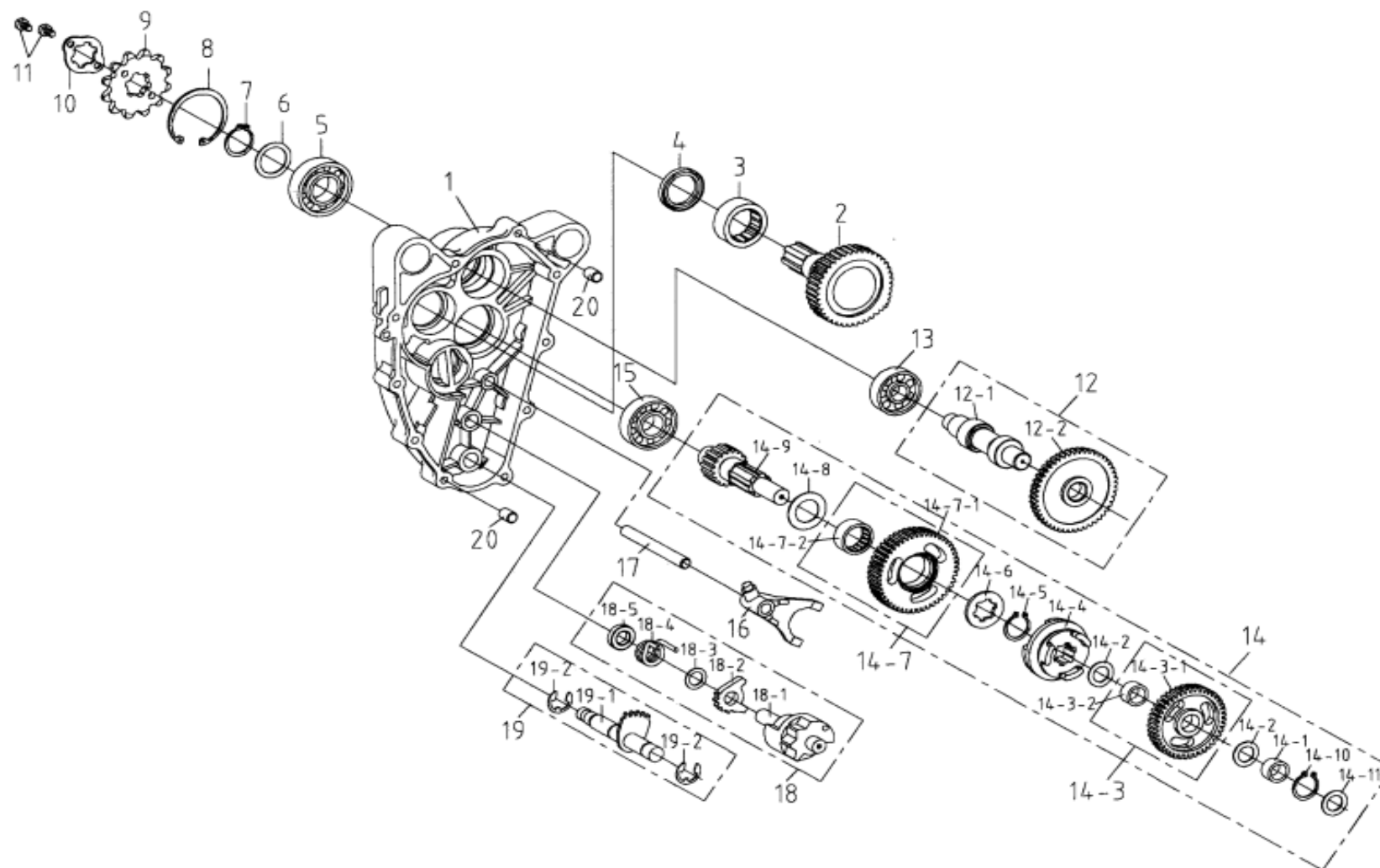
## 7. DRIVEN PULLEY (CVT)



ITEM	PART NO.	NAME	Q'TY	品名	VIN NO	U.S	H.L	A.T	TW	C.A
7		DRIVEN PULLEY (CVT)		驅動皮帶輪						
5△ 7-1	I4050-12110-0H	NUT , HEXAGON HEAD	2	NO:001 六角帶頭螺帽						
7-2	B301A-V30-0000	PULLEY ASSY. DRIVEN	1	CVT從動輪總成						
9△	B301A-V30-9000	PULLEY ASSY. DRIVEN	1	CVT從動輪總成	JIEV304A014714					
7-2-1	B2101-A04-0000	OUTER CLUTCH	1	離合器外殼						
	B2101-A04-9000	OUTER CLUTCH	1	離合器外殼	2004 改款					
7-2-2	I0202-A04-0000	NUT SPECIAL 28 mm	1	特殊螺帽28 mm						
	I0202-A04-9000	NUT SPECIAL 28 mm	1	特殊螺帽28 mm	2004 改款					
9△ 7-2-3	B2300-V30-0000	PLATE ASSY. DRIVEN	1	驅動板組(離合器總成)						
*7-2-3-1	B2350-A04-0000	PLATE COMP DRIVE	1	驅動板(離合器壓板總成)						
*7-2-3-2	B2804-A04-0000	RUBBER CLUTCH DAMPER	3	離合器滾柱						
*7-2-3-3	B2401-A04-0000	SPRING CLUTCH	3	離合器彈簧						
*7-2-3-4	B2530-V30-0000	WEIGHT SET CLUTCH	1	離合器配重						
*7-2-3-5	B2361-A04-0000	PLATE CLUTCH SIDE	1	離合器側板						
*7-2-3-6	I0605-A04-0000	CIR CLIP 7 mm	3	環夾7 mm						
7-2-4	B3238-A04-0000	COLLAR SPRING	1	彈簧襯環						
7-2-5	B3233-A08-0000	SPRING DRIVER FACE	1	CVT彈簧						
7-2-6	B3237-A04-0000	COLLAR SEAL	1	油封套筒(密封環)						
7-2-7	I1351-A04-0000	O-RING PINION CAP	2	O型環						
7-2-8	I1211-A04-0000	SEAL DRIVEN FACE (34×41×4)	2	油封						
7-2-9	B3225-A04-0000	PIN ROLLER GUIDE	3	CVT從動輪銷						
7-2-10	B3226-A04-0000	ROLLER GUIDE	3	滾柱						
7-2-11	B3220-A04-0000	FACE COMP MOVABLE DRIVEN	1	C.V.T被動輪組						
7-2-12	B3200-A04-0000	FACE COMP DRIVEN	1	C.V.T從動輪組						
*7-2-12-1	B3210-A04-0000	FACE DRIVEN	1	從動皮帶盤						
*7-2-12-2	I1002-A04-6902U	BEARING BALL REDIAL 6902U	1	軸承 6902U						

ITEM	PART NO.	NAME	Q'TY	品名	VIN NO	U.S	H.L	A.T	TW	C.A
7		DRIVEN PULLEY (CVT)		驅動皮帶輪						
*7-2-12-3	I4520-28000	CIR CLIP IN 28 mm	1	NO:001 C型扣環						
*7-2-12-4	I1001-A04-0000	BEARING NEEDLE 20×29×18	1	滾針軸承						
7-3	B3100-A07-0000	BELT DRIVE	1	驅動皮帶						
1△5△7-4		CANCEL,PREARRANGE		取消預留						
5△9△7-5	I3002-15024-1C	WASHER	1	平墊圈	JIEV304A014914					
7-6	B2102-A14-0000	FACE DRIVE	1	CVT風扇						
7-7	B2105-A04-0000	BOSS DRIVE FACE	1	襯套						
3△7-8	B2110-A08-0000	FACE ASSY. MOVABLE DRIVE	1	C.V.T主動輪總成						
7-8-1	I4601-28000	CLIP 28 mm	2	NO:004 活塞銷扣環						
7-8-2	B2112-A04-0000	BOSS FACE MOVABLE DRIVE	1	C.V.T主動輪套筒						
7-8-3	B2111-A04-0000	FASE COMP MOVABLE DRIVE	1	CVT主動輪						
7-8-4	B2121-A08-0000	ROLLER SET WEIGHT	6	配重滾子						
7-8-5	B2132-A04-0000	PIECE SLIDE	3	C.V.T滑槽片						
7-8-6	B2131-A04-0000	PLATE RAMP	1	C.V.T滾柱導板						
4△7-9	B8211-A14-0002	RATCHET KICK STARTER	1	起動棘輪						
7-10	I4104-15104	WASHER	1	NO:083 平墊圈	V30J-2A008040					
9△7-11	B3240-V30-0000	DISK CLUTCH FRICTON COMP	1	摩擦片組	JIEV304A014714					
7-11-1	B3241-V30-0000	STOPPER PUMP	1	固定座						
7-11-2	B3242-V30-0000	STOPPER	1	蓋板						
7-11-3	B3243-V30-0000	CLUTCCH	6	彈簧						
7-11-4	B3244-V30-0000	BRAKE LINING	6	來令塊						
7-11-5	I3501-V30-0000	SCREW BUTTON HEAD CAP	3	圓頭內六角螺絲						
7-11-6	I3502-V30-0000	SCREW BUTTON HEAD CAP	3	圓頭內六角螺絲						

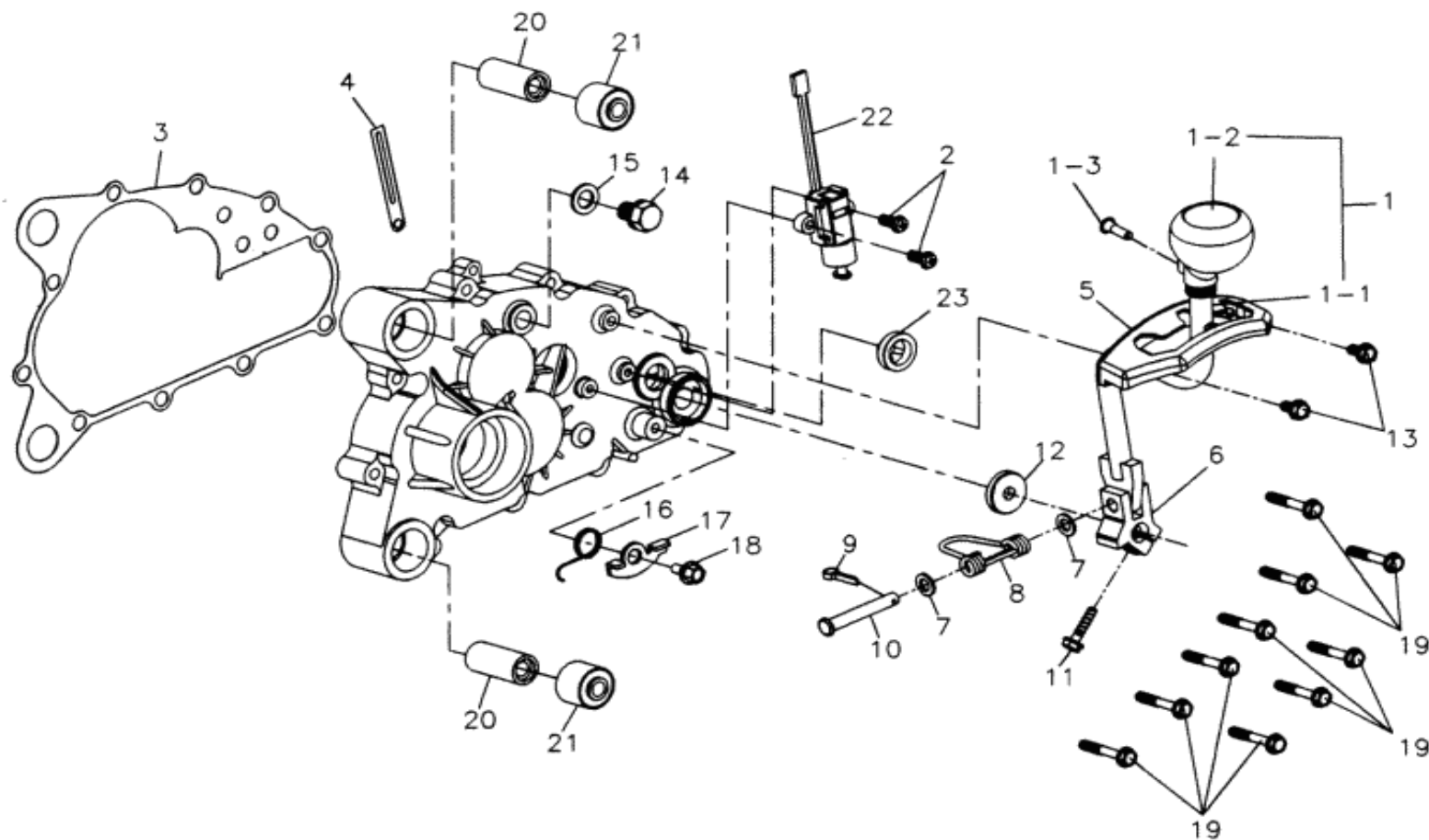
## 8. TRANSMISSION



ITEM	PART NO.	NAME	Q'TY	品名	VIN NO	U.S	H.L	A.T	TW	C.A
8		TRANSMISSION		傳動系						
8-1	B1300-V30-0900	COVER MISSION	1	齒輪箱蓋						
3△ 8-2	B3430-V30-0000	SHAFT FINAL COMP(40T)	1	最終軸組						
8-3	I1130-304217	BEARING, NEEDLE	1	NO:020 滾針軸承						
8-4	I1201-V30-0000	OIL SEAL (30×40×5)	1	油封 (30×40×5)						
8-5	I6150-62053-10	BEARING, BALL, RADIAL	1	NO:036 滾珠軸承						
8-6	I4104-25210	WASHER	1	NO:060 平墊圈						
8-7	I4510-25000	CIRCLIP EX 25mm	1	NO:008 C型扣環						
8-8	I4520-52000	CIRCLIP IN 52mm	1	NO:003 C型扣環						
1△ 4 8-9	B3801-V30-0001	SPROCKET DRIVE (12T)	1	傳動鏈輪(12T)						
8-10	B3811-V30-0000	PLATE A2 FIXING	1	鏈輪固定片						
8-11	I2201-06010-0C	BOLT FLANGE	2	NO:012 六角螺絲						
7△ 8-12	B3420-V30-9000	COUNTER SHAFT COMP	1	中間軸組	3A010360					
*8-12-1	B3421-V30-0000	SHAFT COUNTER (15T)	1	中間軸(15T)						
7△ *8-12-2	B3422-V30-9000	GEAR COUNTER (41T)	1	中間齒輪(41T)	3A010360					
8-13	I6100-63020	BRG RADIAL BALL	1	NO:034 滾珠軸承						
3△ 7 8-14	B3250-V30-9000	SHAFT GEAR SHIFT COMP	1	變檔軸組	3A010360					
*8-14-1	B3213-V30-0001	COLLAR SHAFT	1	軸套						
*8-14-2	I4104-15110	WASHER	2	NO:062 平墊圈						
*8-14-3	B3440-V30-0000	SPUR GEAR ASSY (36T)	1	正檔齒輪組 (36T)	3A010360					
7△ *8-14-3-1	B3441-V30-9000	SPUR GEAR (36T)	1	正檔齒輪(36T)	2004 改款					
*8-14-3-2	B8113-V30-9000	COLLAR SHAFT	1	銅襯套	2004 改款					
*8-14-4	B3481-V30-0000	RATCHET SHIFT	1	變檔棘輪						

ITEM	PART NO.	NAME	Q'TY	品名	VIN NO	U.S	H.L	A.T	TW	C.A
8		TRANSMISSION		傳動系						
*8-14-5	I4510-22000	CIRCLIP EX 22mm	1	NO:007 C 型扣環						
*8-14-6	I0454-22030	WASHER B SPLINE	1	NO:007 栓槽墊圈						
7△ *8-14-7	B3460-V30-0000	REVERSE GEAR ASSY.	1	倒檔齒輪組						
*8-14-7-1	B3461-V30-0000	REVERSE GEAR (49T)	1	倒檔齒輪 (49T)						
*8-14-7-2	I1130-223013	BEARING, NEEDLE	1	NO:021 滾針軸承						
*8-14-8	I4104-22010	WASHER	1	NO:061 平墊圈						
3△ *8-14-9	B3251-V30-9000	SHAFT MAIN TRANSMISSION (17T)	1	主傳動軸(17T)	2004 改款					
9△ 8-14-10	I4540-15000	CIR CLIP	1	NO:004C 型固定環	3A010360					
9△ 8-14-11	I4104-15010A	WASHER	1	NO:082C 平墊圈	3A010360					
8-15	I6100-62043	BEARING, BALL, RADIAL	1	NO:012 滾珠軸承						
8-16	B4231-V30-0000	FORK GEAR SHIFT	1	換檔叉片						
8-17	B4241-V30-0000	SHAFT SHIFT FORK GUIDE	1	換檔叉軸						
3△ 8-18	B4300-V30-0000	DRUM GEAR SHIFT COMP	1	換檔鼓組						
*8-18-1	B4301-V30-0000	DRUM GEAR SHIFT	1	換檔鼓						
*8-18-2	B4302-V30-0000	GEAR DRUM GEAR SHIFT	1	換檔鼓齒輪						
*8-18-3	I4104-13110	WASHER	1	NO:063 平墊圈						
*8-18-4	B4303-V30-0000	SPRING GEAR SHIFT RETURN	1	換檔鼓彈簧						
*8-18-5	B4304-V30-0000	COLLAR SHAFT	1	軸套						
8-19	B461A-V30-0000	SPINDLE SET GEAR SHIFT	1	換檔器總成						
8-19-1	B4610-V30-0000	SPINDLE COMP GEAR SHIFT	1	換檔器組						
8-19-2	I4540-1201A	CIRCLIP	2	NO:003 E 型扣環						
8-20	I4301-10140	PIN DOWEL 10×14	2	NO:009 定位銷						

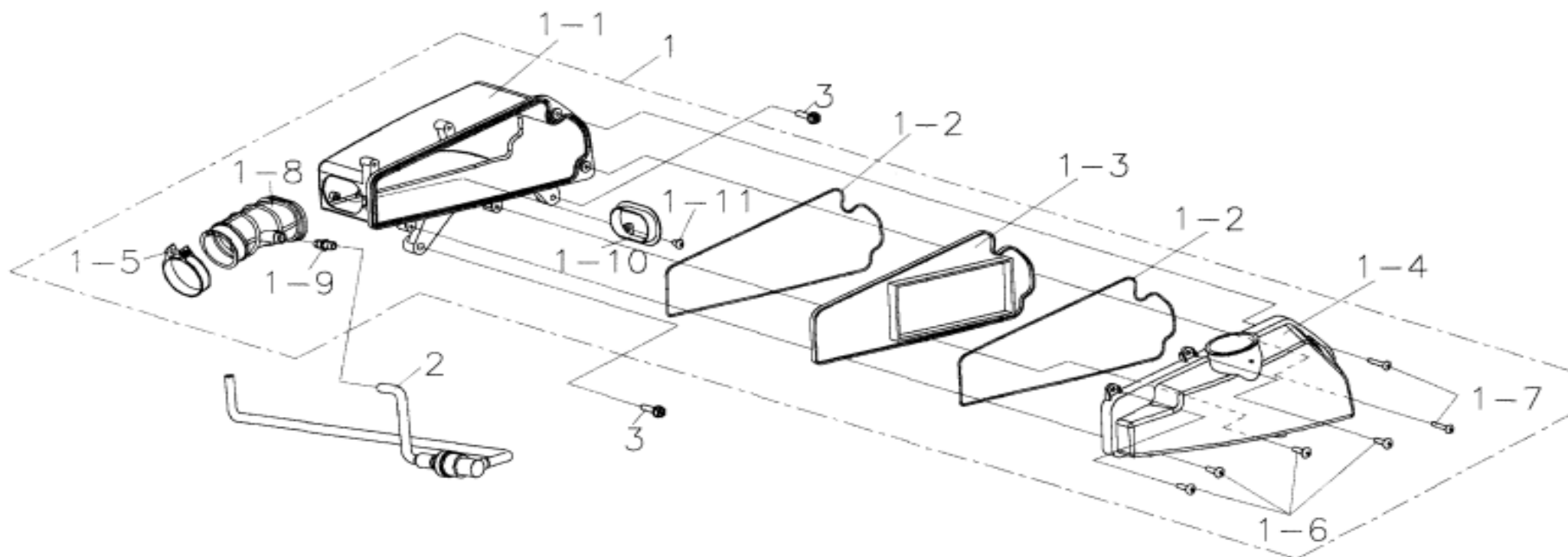
## 9. GEAR SHAFT LEVER · SAFETY SWITCH



ITEM	PART NO.	NAME	Q'TY	品名	VIN NO	U.S	H.L	A.T	TW	C.A
9		GEAR SHAFT LEVER, SAFETY SWITCH		變檔桿，安全開關						
3△4	9-1	B4640-V30-0001	1	變檔桿組						
4△	9-1-1	B4641-V30-0001	1	變檔桿						
	9-1-2	B4642-V30-0000	1	變檔把手						
7△	9-1-3	I3600-06020-0G	1	NO:002 平頭十字螺絲						
	9-2	I3892-05016-0C	2	NO:005 圓頭十字螺絲+波形墊圈						
	9-3	B1395-V30-0000	1	齒輪箱蓋墊片						
	9-4	C2963-A09-0000	1	線夾						
3△	9-5	B4622-V30-0000	1	檔位固定座						
3△	9-6	B4643-V30-0000	1	變檔桿固定座						
	9-7	I4104-08515	2	NO:064 平墊圈						
3△	9-8	B4644-V30-0000	1	變檔桿彈簧						
	9-9	I4201-46195	1	NO:002 開口銷						
3△	9-10	B4645-V30-0000	1	變檔桿銷						
	9-11	I5701-06025-0C	1	NO:011 六角帶頭螺栓						
	9-12	I1206-A00-0000	1	油封 (14×28×7)						
	9-13	I5801-06012-0C	2	NO:022 六角帶頭螺栓						
	9-14	I2800-12015-0C	1	NO:002 洩油塞頭螺栓						
	9-15	I4104-12120	1	NO:049 平墊圈						
	9-16	B4624-V30-0000	1	傳動板彈簧						
	9-17	B4623-V30-0000	1	傳動板						
	9-18	I5701-06010-0C	1	NO:027 六角帶頭螺栓						
	9-19	I5701-06040-0C	10	NO:013 六角帶頭螺栓						
	9-20	A8254-V30-0000	2	襯套40mm						
	9-21	A1103-V30-0000	2	懸吊橡膠襯套						
	9-22	C510A-V30-0000	1	安全開關組						
8△	9-23	A1332-A09-0000	1	油門視窗	3A011672					

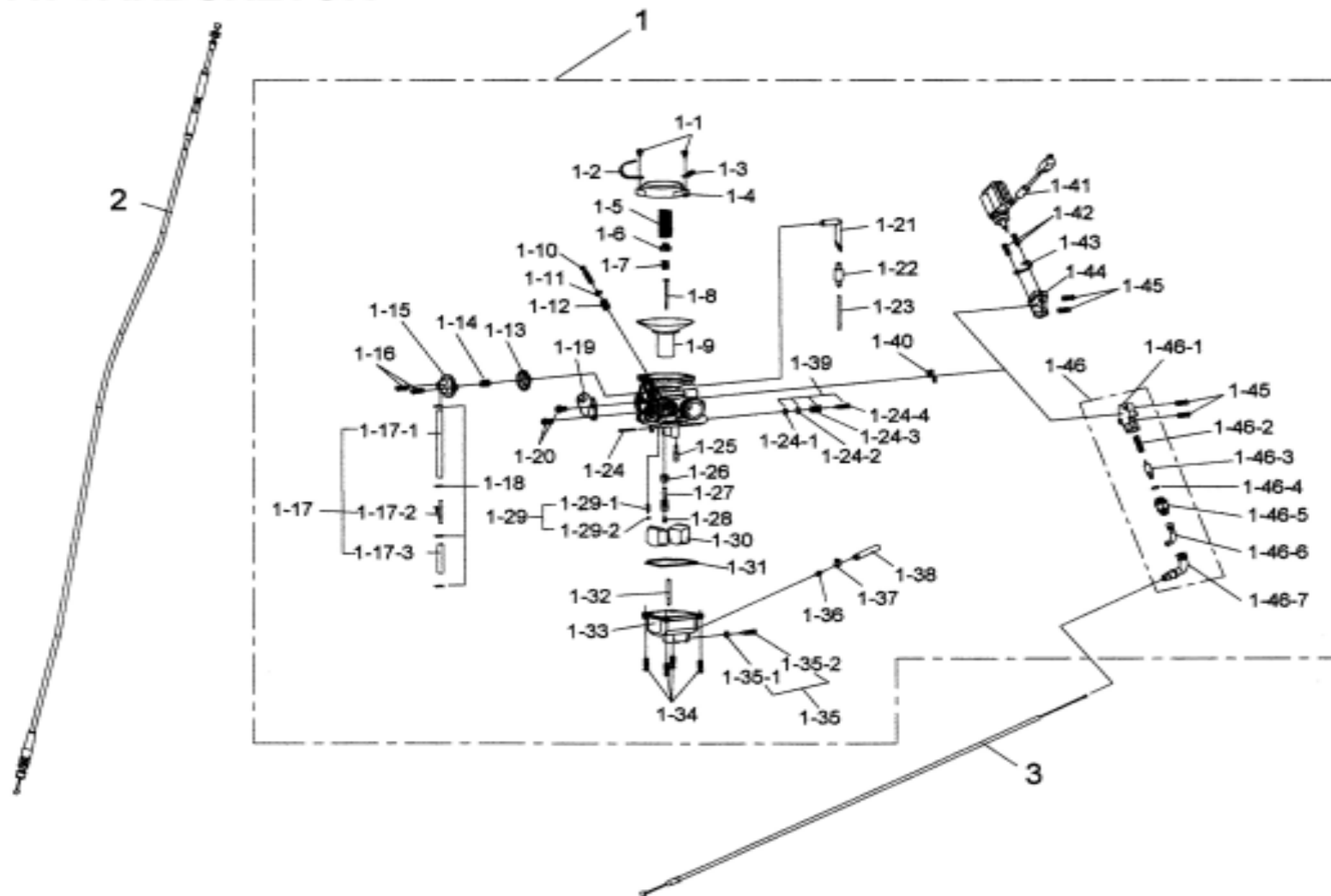


## 10. AIR CLEANER



ITEM	PART NO.	NAME	Q'TY	品名	VIN NO	U.S	H.L	A.T	TW	C.A
10		AIR CLEANER		空氣濾清器						
4△ 10-1	A720A-V30-0001	AIR CLEANER ASSY .	1	空氣濾清器總成						
5△ 10-1	A7230-V30-0001	CASE AIR CLEANER	1	空氣濾清器箱						
10-1-1	A7214-A11-0000	SEAL AIR CLEANER COVER	2	空氣濾清器蓋油封						
10-1-2	A7205-A12-0000	FILTER PAPER ASSY.	1	濾紙總成						
10-1-3	A7231-V30-0001	COVER AIR CLEANER	1	空氣濾清器蓋						
10-1-4	A7256-A04-0000	BAND AIR CLEANER CONNECTING TUBE	1	連接管固定帶						
10-1-5	I3903-320B0	SELF-TAPPING SCREW (φ5 ×20)	4	NO:007 自攻螺絲						
10-1-6	I3903-430B0	SELF-TAPPING SCREW (φ5 ×32)	2	NO:008 自攻螺絲						
5△ 10-1-7	A7253-V30-0000	AIR CLEANER CONNECTING TUBE	1	連接管						
10-1-8	A7364-A11-0000	B TUBE BERATHER	1	通氣管 (B)						
10-1-9	A7233-V30-0000	BAND CONNECTIOG TUBE	1	連接管固定片						
10-1-10	I3903-310B0	TAPPING SCREW PAN	1	NO:006 圓頭十字自攻螺絲						
10-1-11	A736A-V30-9001	GAS WASTE RECOVERY	1	曲軸箱廢氣回收器						
10-3	I5701-06025-0C	BOLT , HEXAGON HEAD	2	NO:011 六角帶頭螺栓						

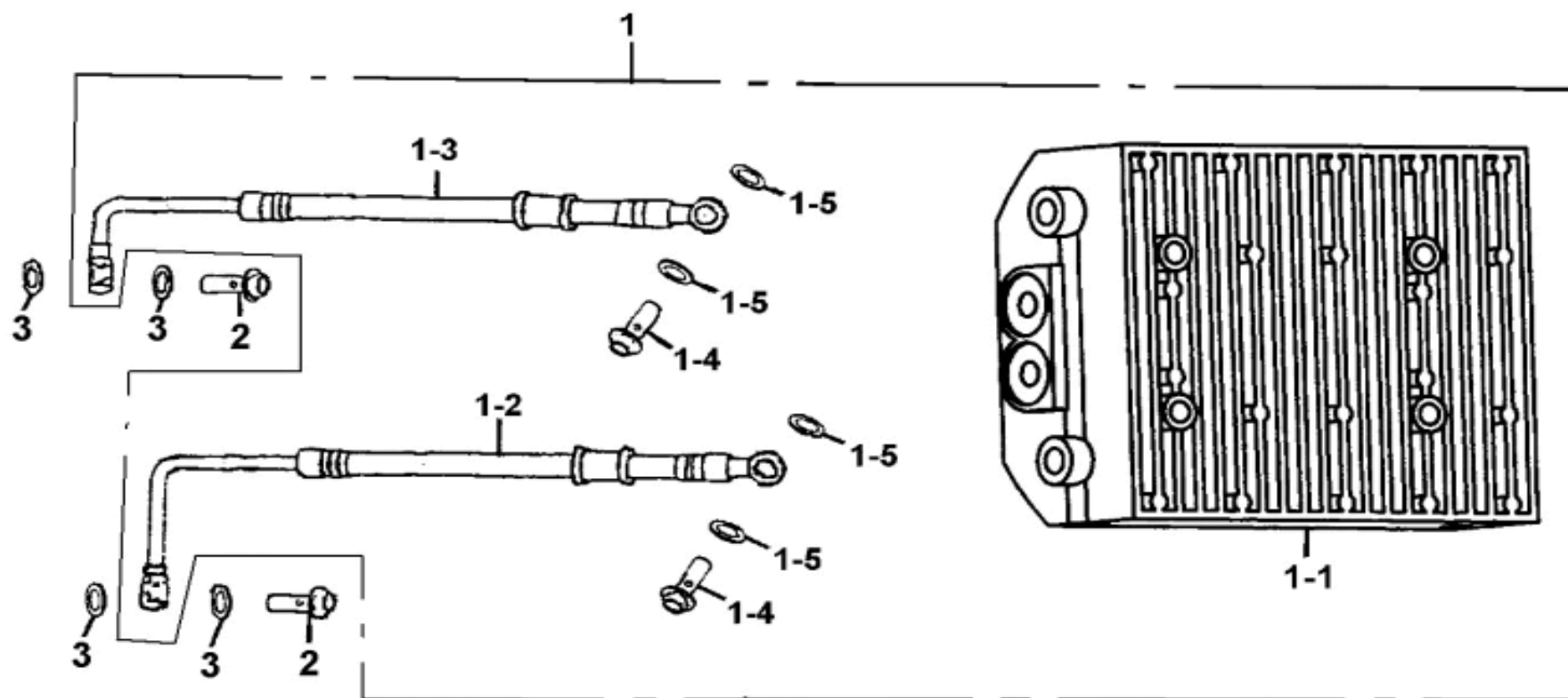
## 11. CARBURETOR



ITEM	PART NO.	NAME	Q'TY	品名	VIN NO	U.S	H.L	A.T	TW	C.A
11		CARBURETOR								
11-1	A610A-V30-0000	CARBURETOR ASSY.	1	化油器總成		N/A				N/A
11-1	A610A-V30-9000	CARBURETOR ASSY.	1	化油器總成	2004 改款		N/A	N/A	N/A	
11-1-1	AC001	SCREW	2	圓頭十字螺絲						
11-1-2	KAB44010	PLATE FIXED PISTON COVER (B)	1	活塞蓋固定片(B)						
11-1-3	KAB43910	PLATE FIXED PISTON COVER (A)	1	活塞蓋固定片(A)						
11-1-4	KAB43820	VACUUM PISTON COVER ASSY	1	真空活塞蓋總成						
11-1-5	KAB73710	PISTON SPRING	1	活塞彈簧						
11-1-6	KAB43610	SPRING PLACE	1	彈簧承座						
11-1-7	KAB43510	JET NEEDLE SPRING	1	閥針緩衝彈簧						
11-1-8	KAB73320	JET NEEDLE (*SG5A)	1	閥針總成 (*SG5A)						
11-1-9	KAB43440	VACUUM PISTON COMP	1	真空活塞組						
11-1-10	KAB41710	THROTTLE ADJUSTING	1	空氣栓						
11-1-11	A1046	WASHER	1	平墊圈						
11-1-12	KAB41810	AIR SPRING	1	空氣彈簧						
11-1-13	KAB40410	A.C.V COVER	1	A.C.V 上蓋						
11-1-14	KAB42010	A.C.V SPRING	1	A.C.V 復位彈簧						
11-1-15	KAB41930	A.C.V DIAPHRAGM ASSY	1	A.C.V 膜片總成						
11-1-16	AC036	SCREW+WASHER	2	圓頭十字螺絲+彈簧墊圈						
11-1-17	KAB40H03	VACUUM TUBE ASSY.	1	真空管總成						
11-1-17-1	KAB45910	BEAR TUBE	1	負壓管						
11-1-17-2	KAB46110	THREE THROUGH TUBE	1	三通接管						
11-1-17-3	KAB46010	VACUUM TUBE	1	真空管						
11-1-18	KAB46410	TUBE CLIP (A)	4	管夾 (A)						
11-1-19	KAB41610	CABLE FIXED SEAT	1	油門線固定座						
11-1-20	AC034	SCREW	2	圓頭十字螺絲						
11-1-21	KAB86210	RUBBER TUBE (A)	1	氣壓膠管 (A)						
11-1-22	KAB87710	THROUGH TUBE	1	旁通管						
11-1-23	KAB87810	RUBBER TUBE (B)	1	氣壓膠管 (B)						
11-1-24	KAB42410	FLOAT PIN	1	浮筒銷						
11-1-25	KAB73010	SLOW JET (*35)	1	低速噴嘴 (*35)						
11-1-26	KAB42910	NEEDLE JET	1	噴嘴閥座						
11-1-27	KAB73110	NEEDLE JET HOLDER (*SG5A)	1	主霧化管(*SG5A)						
11-1-28	KAB83112	MAIN JET ( #112)	1	主噴油嘴 ( #112)		N/A				N/A
	KAB83104	MAIN JET ( # Δ104)	1	主噴油嘴( # Δ104)			N/A	N/A	N/A	
11-1-29	KAB4CC20	NEEDLE VALVE ASSY.	1	針閥總成						

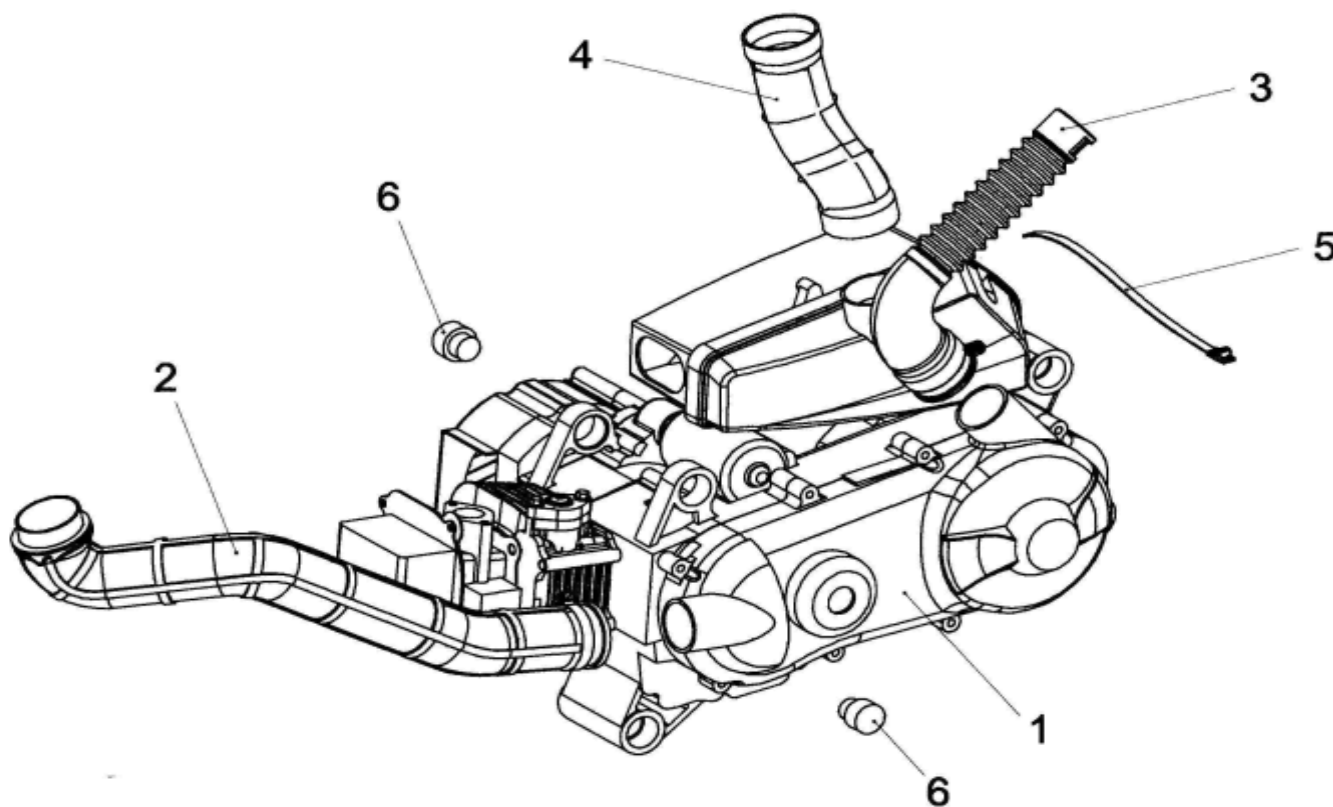
ITEM	PART NO.	NAME	Q'TY	品名	VIN NO	U.S	H.L	A.T	TW	C.A
11		CARBURETOR								
*11-1-29-1	KAB42130	NEEDLE VALVE ADJUST	1	針閥調整						
*11-1-29-2	KAB42210	FLOAT O-RING	1	浮筒扣環						
11-1-30	KAB42310	FLOAT ASSY.	1	浮筒總成						
11-1-31	KAB45710	CHAMBER O-RING	1	底蓋方型環						
11-1-32	KAB87410	COPPER TUBE	1	溢流銅管						
11-1-33	KAB80210	CARB CHAMBER	1	底蓋						
11-1-34	AC033	SCREW	4	圓頭十字螺絲						
11-1-35	KAB61520	DRAIN SCREW ASSY	1	洩油螺栓總成						
11-1-35-1	KAA13510	DRAIN SCREW	1	洩油螺栓						
11-1-35-2	KAA13610	O-RING DRAIN	1	洩油O型環						
11-1-36	KAB87510	RUBBER JOINT	1	膠管接頭						
11-1-37	KAB46510	TUBE CLIP (B)	1	管夾 (B)						
11-1-38	KAB86310	PIPE (*425mm)	1	洩油膠管(*425mm)						
11-1-39	KAB40G04	AIR ADJUSTING SCREW ASSY	1	油氣栓總成						
*11-1-39-1	KAA12410	AIR O-RING	1	油氣O型環						
*11-1-39-2	KAA12510	WASHER	1	平墊圈						
*11-1-39-3	KAB42610	AIR SPRING	1	油氣彈簧						
*11-1-39-4	KAB42510	THROTTLE ADJUSTING	1	油氣栓						
11-1-40	KAB47210	OIL SEAL	1	提速器油封						
11-1-41	KAB47610	AUTO-BY/STARTER	1	自動提速器			N/A			N/A
11-1-42	AC034	SCREW	2	圓頭十字螺絲			N/A			N/A
11-1-43	KAB45810	PLATE AUTO-BY/STARTER	1	提速器固定片			N/A			N/A
11-1-44	KAB40310	AUTO-BY/STARTER SEAT	1	提速器底座			N/A			N/A
11-1-45	AC017	SCREW+WASHER	2	圓頭十字螺絲+彈簧墊圈						
11-1-46	A6110-V30-0000	MANUAL CHOKE COMP	1	手動起動器	2004 改款		N/A	N/A	N/A	
11-1-46-1	A6154-V30-0000	MANUAL CHOKE SEAT	1	手動阻風門底座			N/A	N/A	N/A	
11-1-46-2	A6152-V30-0000	SPRING	1	壓縮彈簧			N/A	N/A	N/A	
11-1-46-3	A6153-V30-0000	MANUAL PISTON VALVE	1	手動式活塞閥			N/A	N/A	N/A	
11-1-46-4	A6158-V30-0000	O-RING	1	O 型環			N/A	N/A	N/A	
11-1-46-5	A6157-V30-0000	PISTON VALVE SEAT	1	活塞閥座			N/A	N/A	N/A	
11-1-46-6	A6156-V30-0000	BEND TUBE	1	彎管			N/A	N/A	N/A	
11-1-46-7	A6155-V30-0000	BEND TUBE SHEATH	1	彎管護套			N/A	N/A	N/A	
11-2	A7910-V30-0000	CABLE ASSY.	1	加油導線						
11-3	A7920-V30-0000	CABLE	1	阻風門線	2004 改款		N/A	N/A	N/A	

## 12. OIL COOLER



ITEM	PART NO.	NAME	Q'TY	品名	VIN NO	U.S	H.L	A.T	TW	C.A
12		OIL COOLER								
12-1	I902A-V30-9001	COOLER COMP OIL ASSY.	1	機油冷卻總成(大)						
6△ 12-1-1	I9020-V30-9900	COOLER COMP OIL COATING	1	冷卻器組 (皮膜處理)						
12-1-2	A9121-V30-0002	OIL HOSE COMP INLET	1	進油管						
12-1-3	A9122-V30-0002	OIL HOSE COMP OUTLET	1	出油管						
12-1-4	I0002-A04-0000	BOLT B OIL PASS	2	油管螺栓						
12-1-5	I4104-12514	WASHER	4	NO:048 平墊圈						
12-2	I0002-A04-0000	BOLT B OIL PASS	2	油管螺栓						
12-3	I4104-12514	WASHER	4	NO:048 平墊圈						

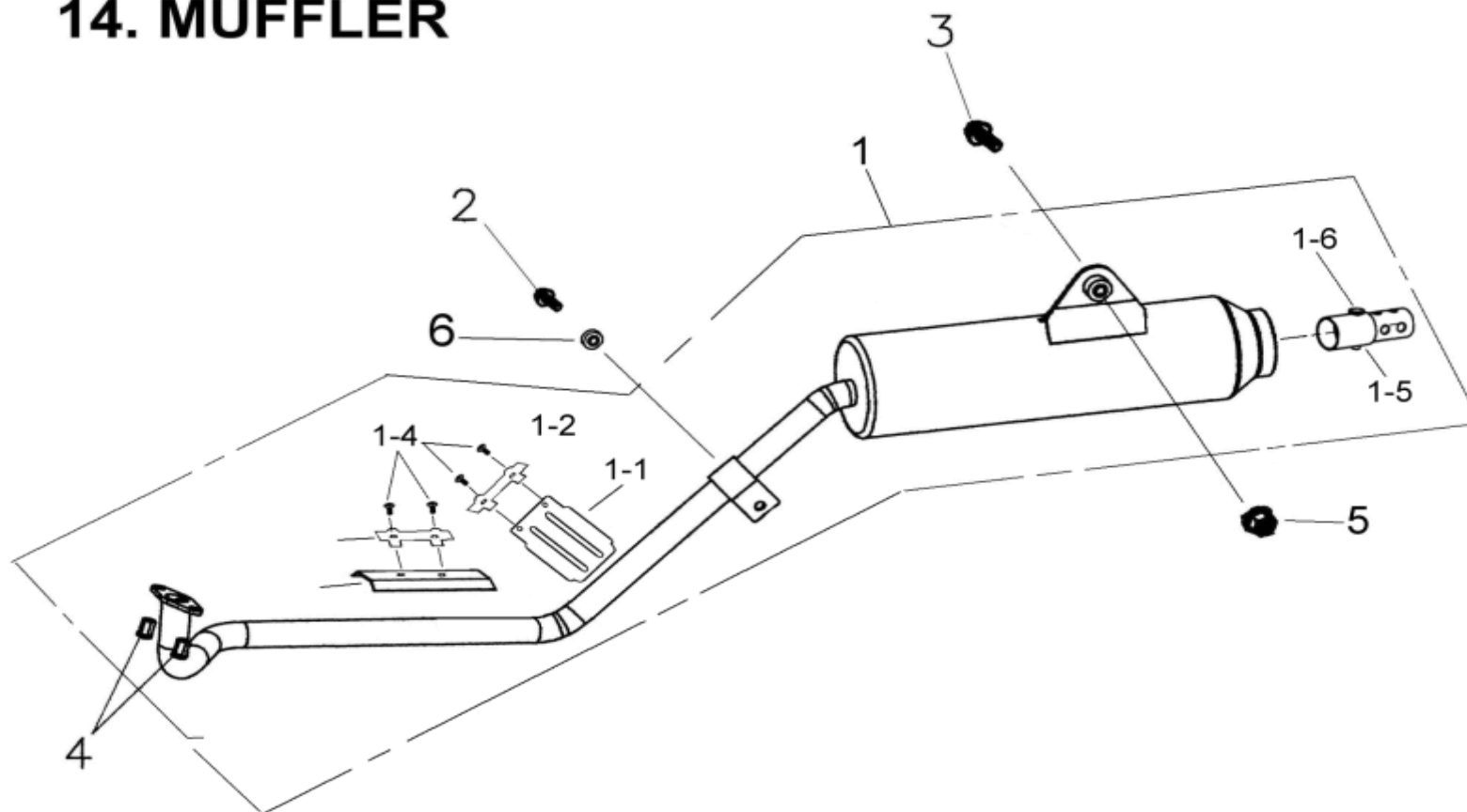
## 13. ENGINE





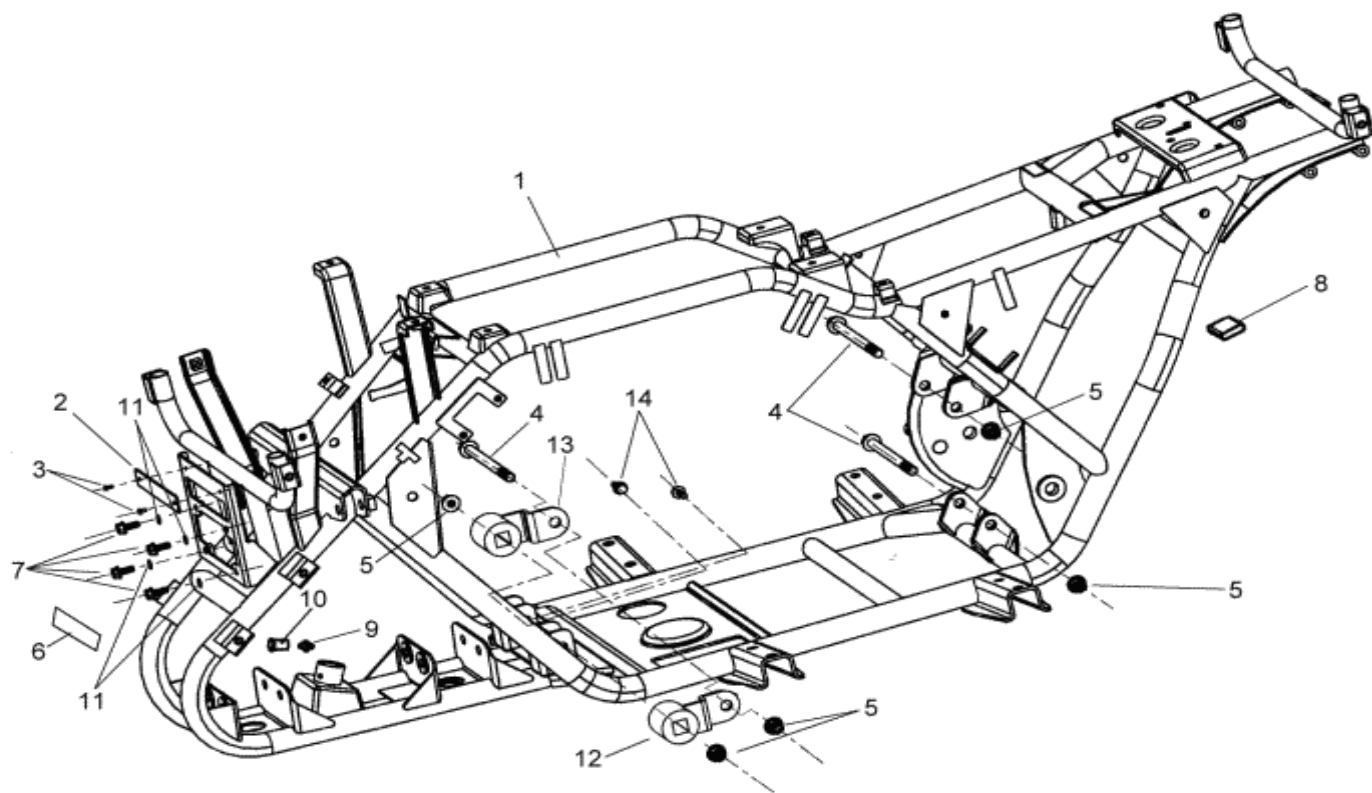
ITEM	PART NO.	NAME	Q'TY	品名	VIN NO	U.S	H.L	A.T	TW	C.A
13		ENGINE								
13-1	AA000-V30-8302	ENGINE	1	引擎總成 (自動)		N/A				N/A
	AA000-V30-5000	ENGINE	1	引擎總成 (手動)	5A006023		N/A	N/A	N/A	
13-2	B0100-FIA0-0000	INLET TUBE , CVT	1	CVT進氣管總成						
13-3	B0200-FIA0-0000	EXH TUBE , CVT	1	CVT排氣管總成						
13-4	A7215-V30-0000	AIR/C CASE DUCT	1	空濾器進氣管						
13-5	H3936-5AA0-0000	WIRE CLAMP	1	線束帶						
13-6	A1105-FIA0-000	ENGINE RUBBER PLUG	2	引擎橡膠塞						

## 14. MUFFLER



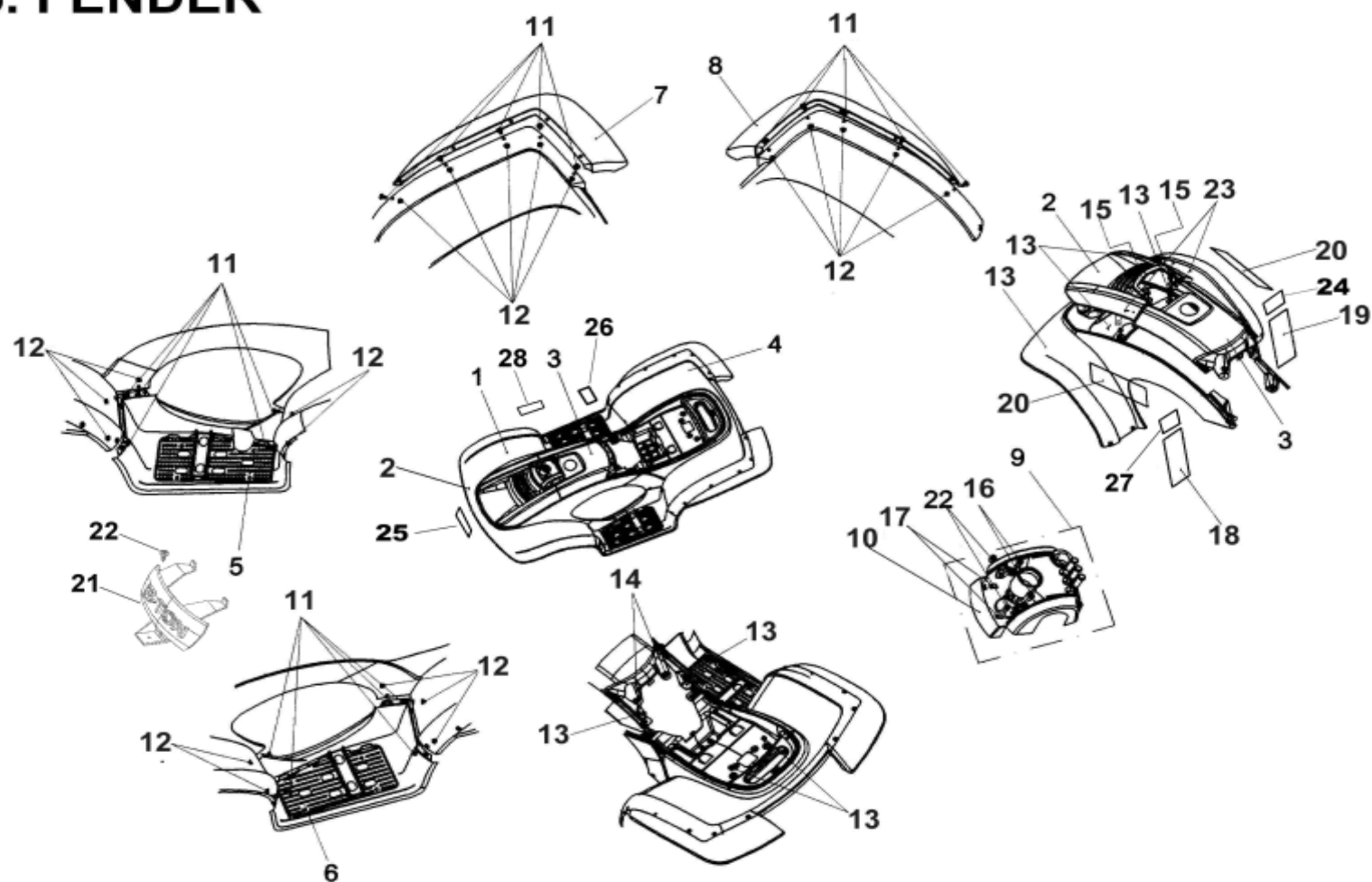
ITEM	PART NO.	NAME	Q'TY	品名	VIN NO	U.S	H.L	A.T	TW	C.A
14		MUFFLER ASSY.								
14-1	A830A-FIA0-9000	EXHAUST PIPE ASSY.	1	排氣管總成	5A0003657					
14-1-1	A830B-FIA0-1000	DRIVE CHAIN COVER	1	鏈條保護蓋						
14-1-2	A830C-FIA0-1000	ANTI-LOOSEN STRIP	2	防鬆片						
14-1-3	A830D-FIA0-0000	FRONT EXHAUST PIPE COVER	1	前彎管護熱蓋						
14-1-4	A830F-FIA0-0000	BOLT WASHER	4	六角螺栓附墊圈						
14-1-5	A8303-FIA0-0000	SPARK ARRESTER	1	火花捕集器	5A0003657		N/A	N/A	N/A	N/A
14-1-6	A830G-FIA0-0000	SCRAW	1	承窩螺絲	5A0003657		N/A	N/A	N/A	N/A
14-2	I7507-FIA0-0000	BOLT,HEXAGON HEAD WITH WASHER	1	六角螺栓附墊圈						
14-3	I0149-08036-01	BOLT ,FLANGE	1	凸緣螺栓						
14-4	I0179-06850	NUT	2	排氣管螺帽						
14-5	I5611-08200	NUT,FLANGE CHECK(M8)	1	凸緣防鬆螺帽						
14-6	I3016-08018-1G	WASHER	1	平墊圈	3A002444					

## 15.FRAME



ITEM	PART NO.	NAME	Q'TY	品名	VIN NO	U.S	H.L	A.T	TW	C.A
15		FRAME								
15-1	E0100-FIB0-1000	FRAME COMP.	1	車架總成						
15-2	E0101-5EA0-0000	FRAME NUMBER PLATE(120×20×1)	1	車架號碼牌						N/A
	E0101-5EE4-0000	FRAME NUMBER PLATE(135×35×0.5)	1	車架號碼牌		N/A	N/A	N/A	N/A	
15-3	H750A-5BA1-0000	FIX NAIL	2	拉釘(ψ3.5×9)						
15-4	E0351-5EA0-0000	ENGINE SET BOLT(M10×115)	3	引擎裝置螺栓						
15-5	I5611-10200	NUT,FLANGE CHECK	5	凸緣防鬆螺帽						
15-6	F4309-5EA0-0000	STICKER, MFD.	1	廠商貼紙						
15-7	I2501-06080-0B	BOLT,HEXAGON HEAD	4	六角螺栓						
15-8	G7223-5EB0-0000	RUBBER PAD	1	防震橡膠塊						
15-9	I6600-06000	GREASE VALVE(1/4")	1	黃油嘴(1/4")						
15-10	E0209-5EA0-9000	CAP, GREASE VALVE	1	黃油嘴蓋						
15-11	I2140-60001	WASHER	4	墊圈						
15-12	E0350-FIA0-0000	ENGINE SUSPENSION ASSY. ,LEFT	1	引擎懸吊裝置總成(左)						
15-13	E0353-FIA0-0000	ENGINE SUSPENSION ASSY. ,RIGHT	1	引擎懸吊裝置總成(右)						
15-14	E0352-FIA0-0000	SCREW,BUTTON HEAD CAP	2	圓頭四角螺絲						

## 16. FENDER

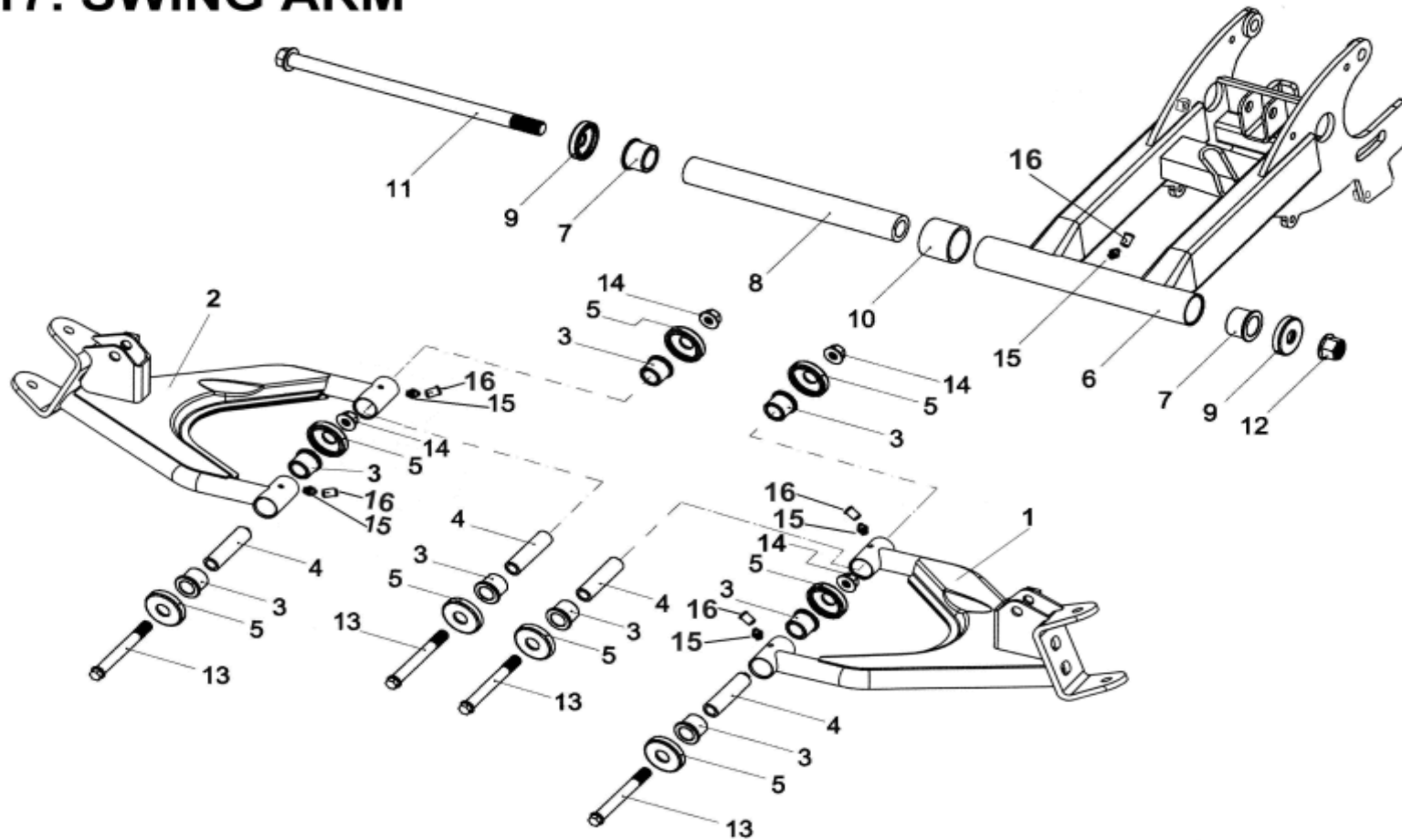


ITEM	PART NO.	NAME	Q'TY	品名	VIN NO	U.S	H.L	A.T	TW	C.A
16		FENDER								
16-1	F4300-FIB0-4200	FRONT FENDER (RED)	1	前擋泥板(紅)						
	F4300-FIB0-5400	FRONT FENDER (BLUE)	1	前擋泥板(藍)						
	F4300-FIB0-0700	FRONT FENDER (SILVER)	1	前擋泥板(銀)						
	F4300-FIB0-2500	FRONT FENDER (GREEN)	1	前擋泥板(綠)						N/A
	F4300-FIB0-3200	FRONT FENDER (METAIL RED)	1	前擋泥板(金屬紅)			N/A	N/A	N/A	
	F4300-FIB0-4400	FRONT FENDER (METAIL BLUE)	1	前擋泥板(金屬藍)			N/A	N/A	N/A	
	F4300-FIB0-0C00	FRONT FENDER (CAMO)	1	前擋泥板(迷彩)		N/A		N/A	N/A	N/A
16-2	F4301-FIA0-0800	FRONT CENTRAL COVER(BLACK)	1	前中心蓋(黑)						
16-3	F4302-FIA0-0800	REAR CENTRAL COVER (BLACK)	1	後中心蓋(黑)						
16-4	H3500-FIA0-4200	REAR FENDER(RED)	1	後擋泥板(紅)						
	H3500-FIA0-5400	REAR FENDER(BLUE)	1	後擋泥板(藍)						
	H3500-FIA0-0700	REAR FENDER(SILVER)	1	後擋泥板(銀)						
	H3500-FIA0-2500	REAR FENDER(GREEN)	1	後擋泥板(綠)						N/A
	H3500-FIA0-3200	REAR FENDER(METAIL RED)	1	後擋泥板(金屬紅)			N/A	N/A	N/A	
	H3500-FIA0-4400	REAR FENDER(METAIL BLUE)	1	後擋泥板(金屬藍)			N/A	N/A	N/A	
	H3500-FIA0-0C00	REAR FENDER(CAMO)	1	後擋泥蓋(迷彩)		N/A		N/A	N/A	N/A
16-5	H3520-FIA0-0800	FOOTREST, RIGHT	1	右置腳踏板(黑)						
16-6	H3620-FIA0-0800	FOOTREST, LEFT	1	左置腳踏板(黑)						
16-7	H3720-FIA0-0800	TRIM,REAR RIGHT	1	右後護片(黑)						
16-8	H3820-FIA0-0800	TRIM,REAR LEFT	1	左後護片(黑)						
16-9	E320A-FIA0-0800	COVER, HANDLE BAR	1	把手上蓋總成						
16-10	E3206-FIA0-0800	FRONT PLATE,HANDLE BAR COVER	1	手把蓋前擋(黑)						
16-11	E0117-9EA0-0000	BUTTON HEAD SCREW(M6×18)	20	扁圓頭螺絲						
16-12	I5611-06200-0G	NUT	20	自鎖螺帽(墨綠)						
16-13	I0119-06821	BOLT,HEXAGON(M6×20)	8	六角螺栓(M6×20)						

ITEM	PART NO.	NAME	Q'TY	品名	VIN NO	U.S	H.L	A.T	TW	C.A
16		FENDER								
16-14	I0149-06035	BOLT ,FLANGE	2	凸緣螺栓						
16-15	I8310-FIA0-0000	PLASTICS SCREW	2	塑膠螺絲						
16-16	I8556-06020	SCREW,WITH WASHER	2	盤頭螺絲附墊圈						
16-17	I4603-04000-5C	NUT, WITH SPRING	2	彈簧螺帽						
16-18	H7101-FIA0-0000	STICKER, WARNING (PASSENGER)	1	警告貼紙		N/A				
	H7101-FIA0-9000	STICKER, WARNING (PASSENGER)	1	警告貼紙	5A004923		N/A	N/A	N/A	N/A
16-19	H7102-FIA0-0000	STICKER, WARNING (Y-16)	1	警告貼紙Y16		N/A				
	H7102-FIA0-9000	STICKER, WARNING	1	警告貼紙	5A004923		N/A	N/A	N/A	N/A
16-20	H7103-FIB0-1000	STICKER,YUKON CXL150	2	車身貼紙CXL150			N/A	N/A	N/A	
	H7103-FIB1-0000	STICKER,CHALLENGER CXL150	2	車身貼紙CXL150		N/A				N/A
16-21	F4303-FIB0-0800	HAED LIGHT COVER	1	大燈封蓋						
16-22	I2804-04010-5C	SELF-TAPPING SCREW	3	自攻螺絲(M4×10)						
16-23	I7707-04016	SELF-TAPPING SCREW	2	自攻螺絲M4×16						
16-24	H7102-5EA1-0000	STICKER,CE	1	CE貼紙		N/A		N/A	N/A	N/A
16-25	H7107-5ED7-0000	EMBLEM,RAZOR	1	RAZOR銘牌		N/A	N/A		N/A	N/A
16-26	H7129-FIA0-0000	STICKER,INDICATE GEAR	1	排擋指示貼紙	2A000248					
16-27	H7142-5EE0-0000	WARNING STICKER,VEHICLE SUIT	1	車輛適用警告貼紙		N/A	N/A	N/A	N/A	
16-28	H7131-FIB0-0000	STICKER,POWER SUPPLY	1	電源供應座貼紙			N/A	N/A	N/A	N/A

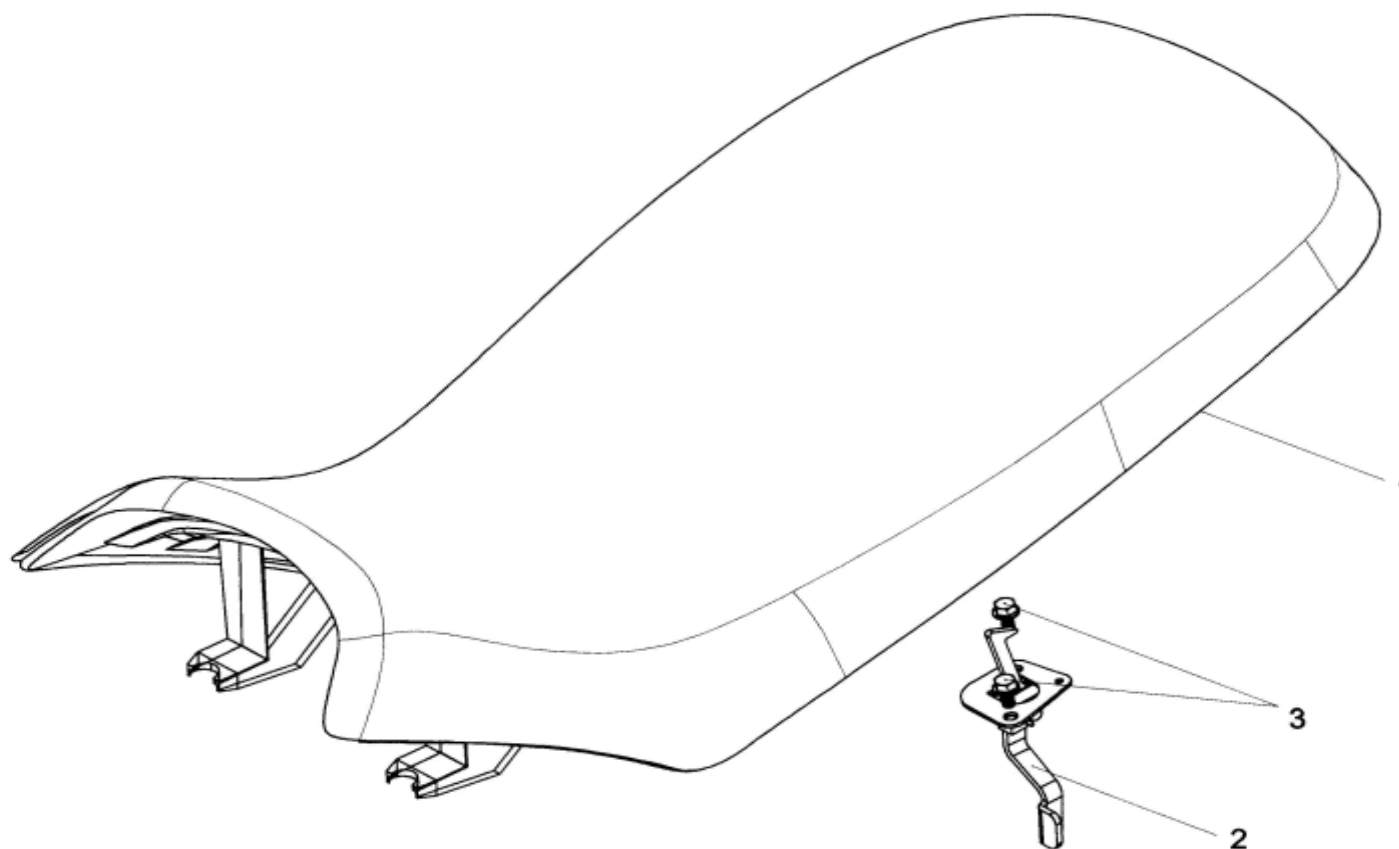


## 17. SWING ARM



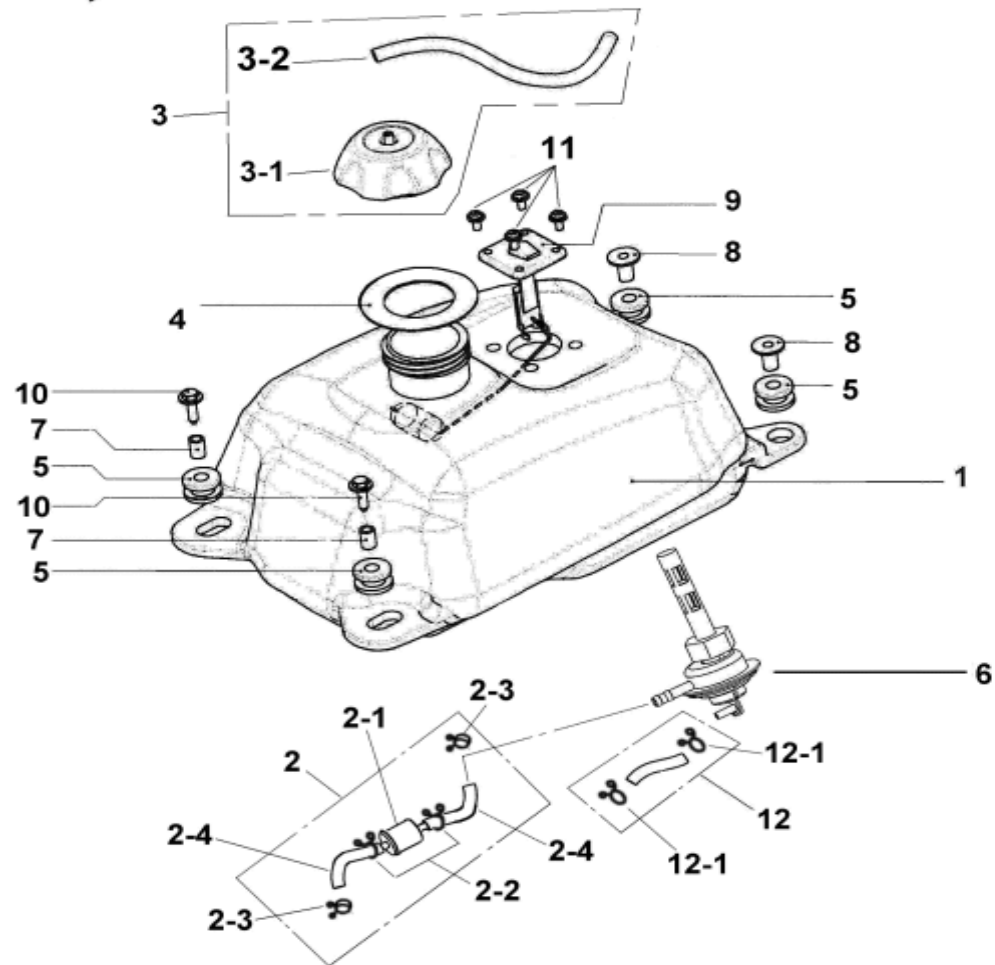
ITEM	PART NO.	NAME	Q'TY	品名	VIN NO	U.S	H.L	A.T	TW	C.A
17		SWING ARM								
17-1	E0200-FIA0-1000	ARM, SUSPENSION, L.H.	1	左A臂總成	2A006347					
17-2	E0210-FIA0-1000	ARM, SUSPENSION, R.H.	1	右A臂總成	2A006347					
17-3	E0201-FIA0-0000	BUSH, ARM SUSPENSION	8	A臂含油襯套						
17-4	E0209-FIA0-0000	SPACER	4	A臂套筒(短)						
17-5	E2205-4HA0-0000	SWING ARM SEAL COVER	8	封蓋						
17-6	E220A-FIB0-9000	SWING ARM SUB ASSY.	1	後叉總成	5A005222					
17-7	E2208-5EA0-0000	SWING ARM OIL LINER(ψ20)	2	後叉含油襯套						
17-8	E2209-FIA0-0000	SPACER	1	後叉套筒(長)						
17-9	E2205-5EA0-0000	SWING ARM SEAL COVER	2	後叉封套						
17-10	E2202-FIA0-0000	RUBBER SLEEVE	1	後叉軸套						
17-11	E2201-FIA0-0000	BOLT,SWING RAM SET CHECK(M14×265)	1	後叉裝置螺栓						
17-12	I5611-14200	NUT ,FLANGE CHECK(M14)	1	凸緣防鬆螺帽						
17-13	I0149-10080	FLANGE(M10×80)	4	凸緣螺栓(10×80)						
17-14	I5611-10200	NUT,FLANGE CHECK(M10)	4	凸緣防鬆螺帽						
17-15	I6600-06000	GREASE VALVE	5	黃油嘴(1/4")						
17-16	E0209-5EA0-9000	CAP,GREASE VALVE	5	黃油嘴蓋						

## 18. SEAT



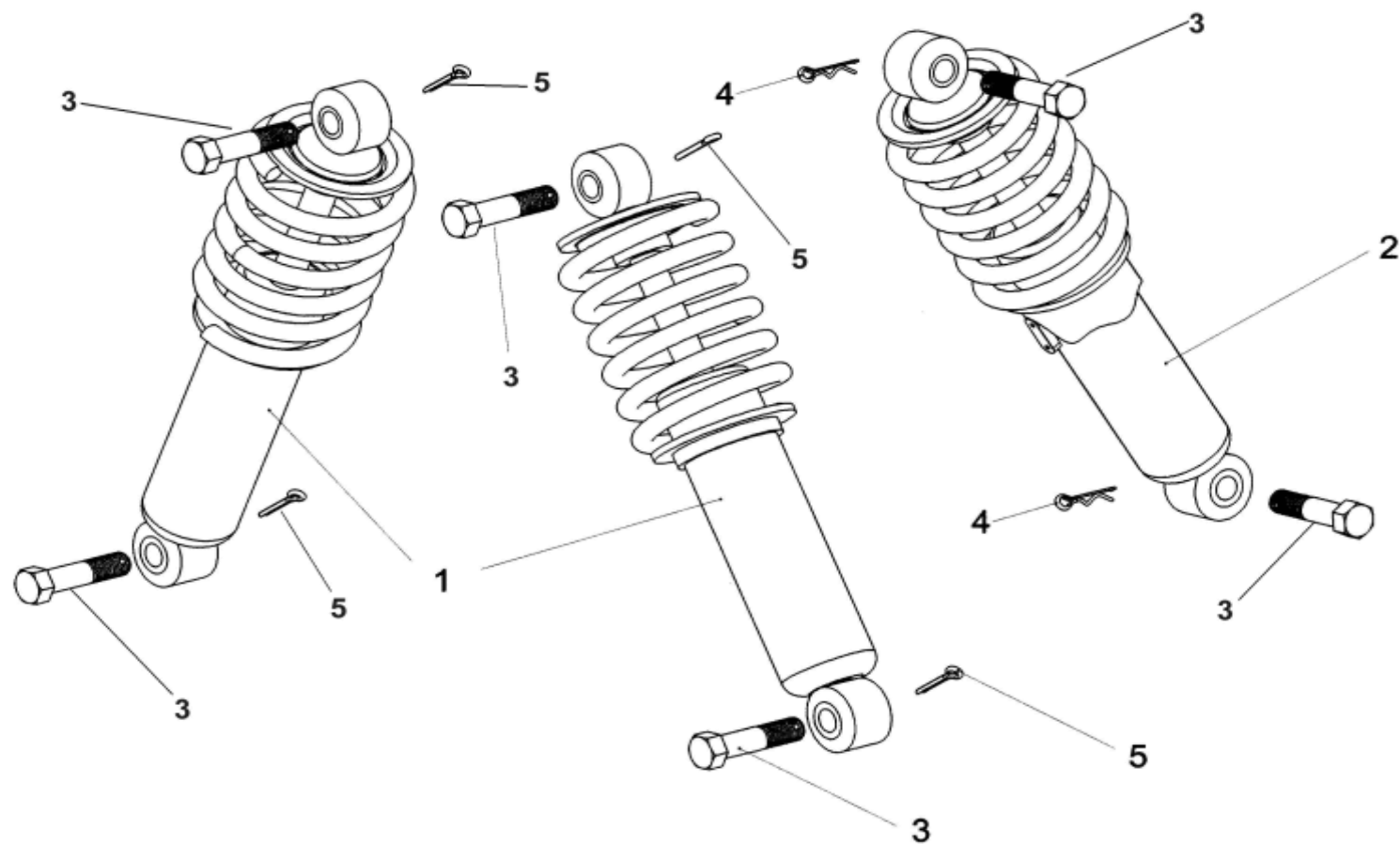
ITEM	PART NO.	NAME	Q'TY	品名	VIN NO	U.S	H.L	A.T	TW	C.A
18		SEAT								
18-1	G720A-FIA0-0000	SEAT ASSY.(BLACK)	1	座墊總成(黑色)						
	G7200-FIC0-0000	SEAT ASSY	1	座墊總成(防滑表皮)	5A004923		N/A	N/A	N/A	N/A
18-2	G7201-FIA0-0000	SEAT LOCK	1	座墊扣						
18-3	I0149-06012	FLANGE BOLT	2	凸緣螺栓						

## 19. FUEL TANK, OIL TANK



ITEM	PART NO.	NAME	Q'TY	品名	VIN NO	U.S	H.L	A.T	TW	C.A
19		FUEL TANK , OIL TANK ASSY								
19-1	A7500-FIA0-0000	FUEL TANK COMP	1	汽油箱						
19-2	A751A-FIA0-1000	FUEL FILTER ASSY.	1	汽油濾清器總成	2A006697					
19-2-1	A7519-FIA0-1000	FILTER COMP FUEL	1	汽油濾清器	2A006697					
19-2-2	A7516-5EA0-0000	CLIP(A)	2	汽油管止夾(A)						
19-2-3	A7517-FIA0-0000	CLIP	2	汽油管止夾						
19-2-4	A7514-FIA0-0000	FUEL TUBE(A)	2	汽油濾清器油管(A)						
19-3	A762A-9FA0-0000	FUEL TANK CAP ASSY	1	汽油箱蓋總成						
19-3-1	A7620-9FA0-0000	FUEL TANK CAP ASSY.	1	汽油箱蓋總成						
19-3-2	A7621-9FA0-0000	BREATHE TUBE	1	油箱呼吸管						
19-4	A7622-9FA0-0000	RUBBER PAD, FUEL TANK CAP	1	汽油箱蓋橡膠墊						
19-5	A7510-FIA0-0000	FUEL TANK RUBBER PAD	4	汽油箱橡膠墊						
19-6	A6701-FIA0-0000	FUEL COCK ASSY.	1	旋油塞總成						
19-7	A7511-FIA0-0000	RUBBER INSULATOR	2	汽油箱橡膠隔筒						
19-8	A7512-FIA0-0000	FUEL TANK GASKET SPACER	2	汽油箱墊片隔筒						
19-9	C780A-FIA0-0000	METER FUEL LEVER	1	汽油量表						
19-10	I7507-06225	BOLT ,HEXAGON HEAD	2	六角套頭螺栓						
19-11	I0200-50160	BOLT,WITH WASHER(M5×16)	4	帶墊圈螺栓						
19-12	A751B-FIA0-0000	VACUUM TUBE COMP	1	負壓管						
19-12-1	A7518-FIA0-0000	CLIP	2	負壓管線夾						

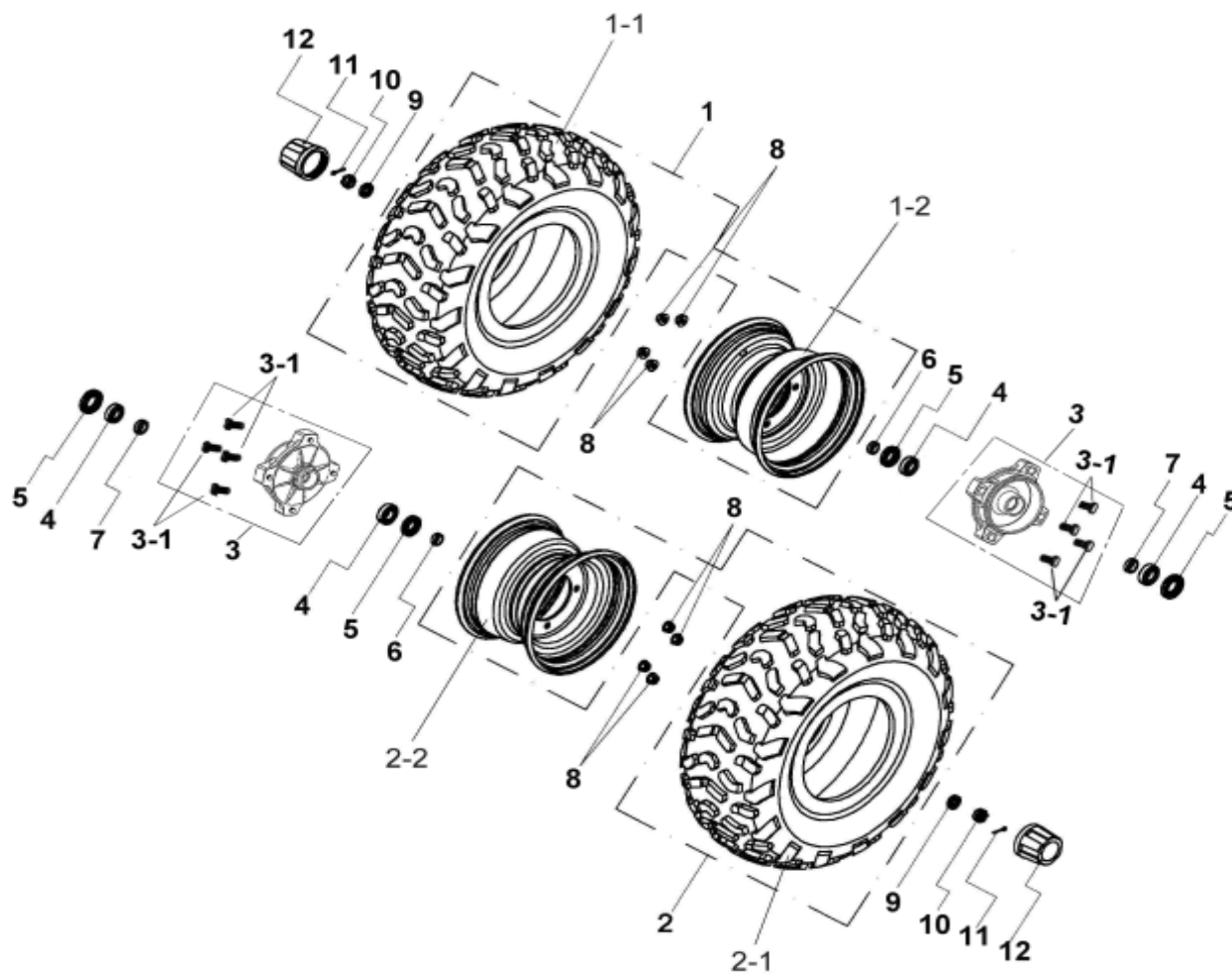
## 20. SUSPENSION



ITEM	PART NO.	NAME	Q'TY	品名	VIN NO	U.S	H.L	A.T	TW	C.A
20		SUSPENSION								
20-1	E1105-FIA0-9000	SUSPENSION, FRONT	2	前避震器	5A004923					
20-2	E2400-FIC0-0000	SUSPENSION, REAR	1	後避震器	3A002362					
20-3	I0102-10040B	PIN HOLE BOLT(M10×40)	6	銷孔螺栓						
20-4	I0469-12006	COTTER PIN	2	B型銷						
20-5	I9900-25019	COTTER PIN (3/32×3/4")	4	開口銷						

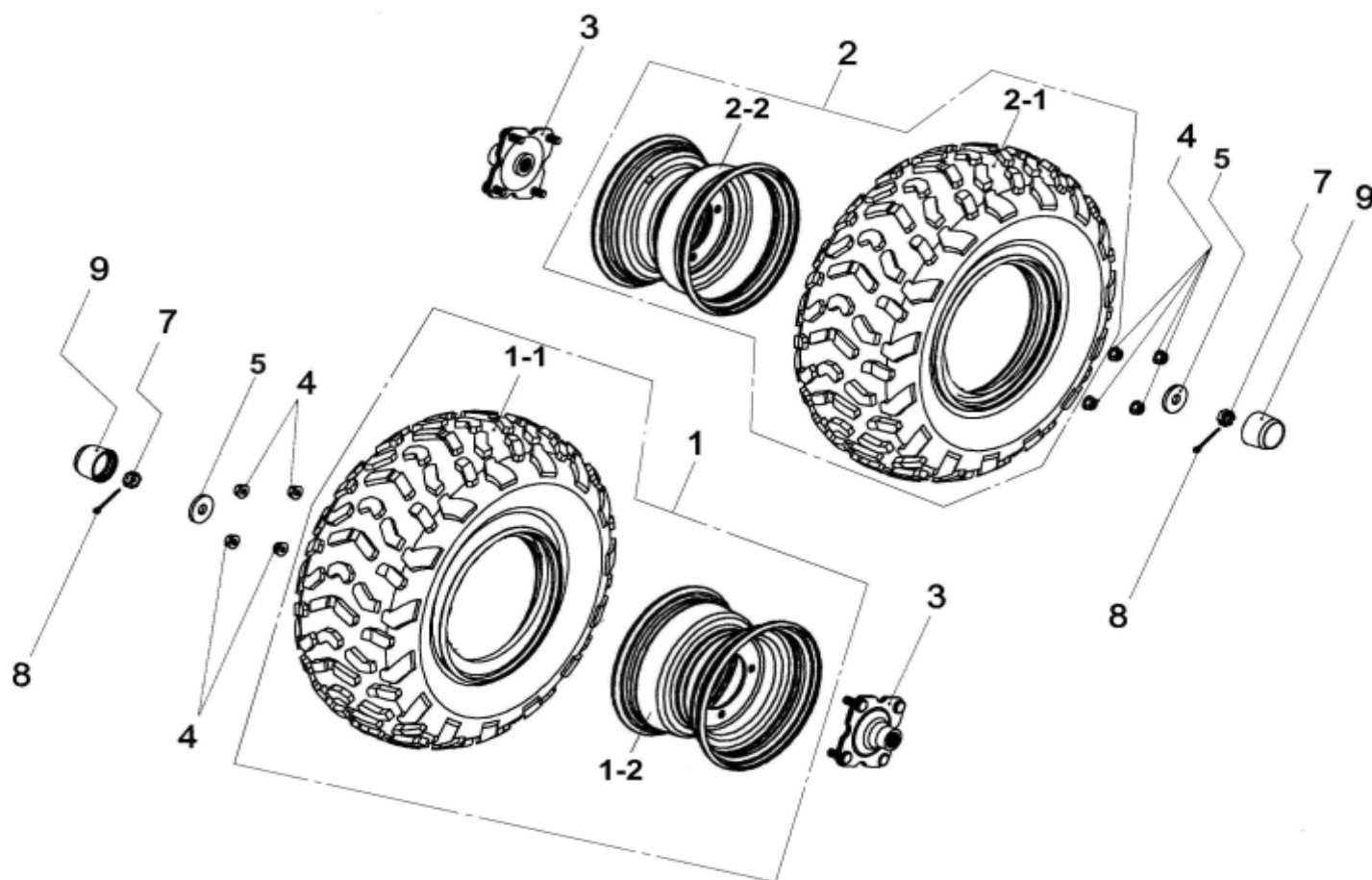


## 21. FRONT WHEEL



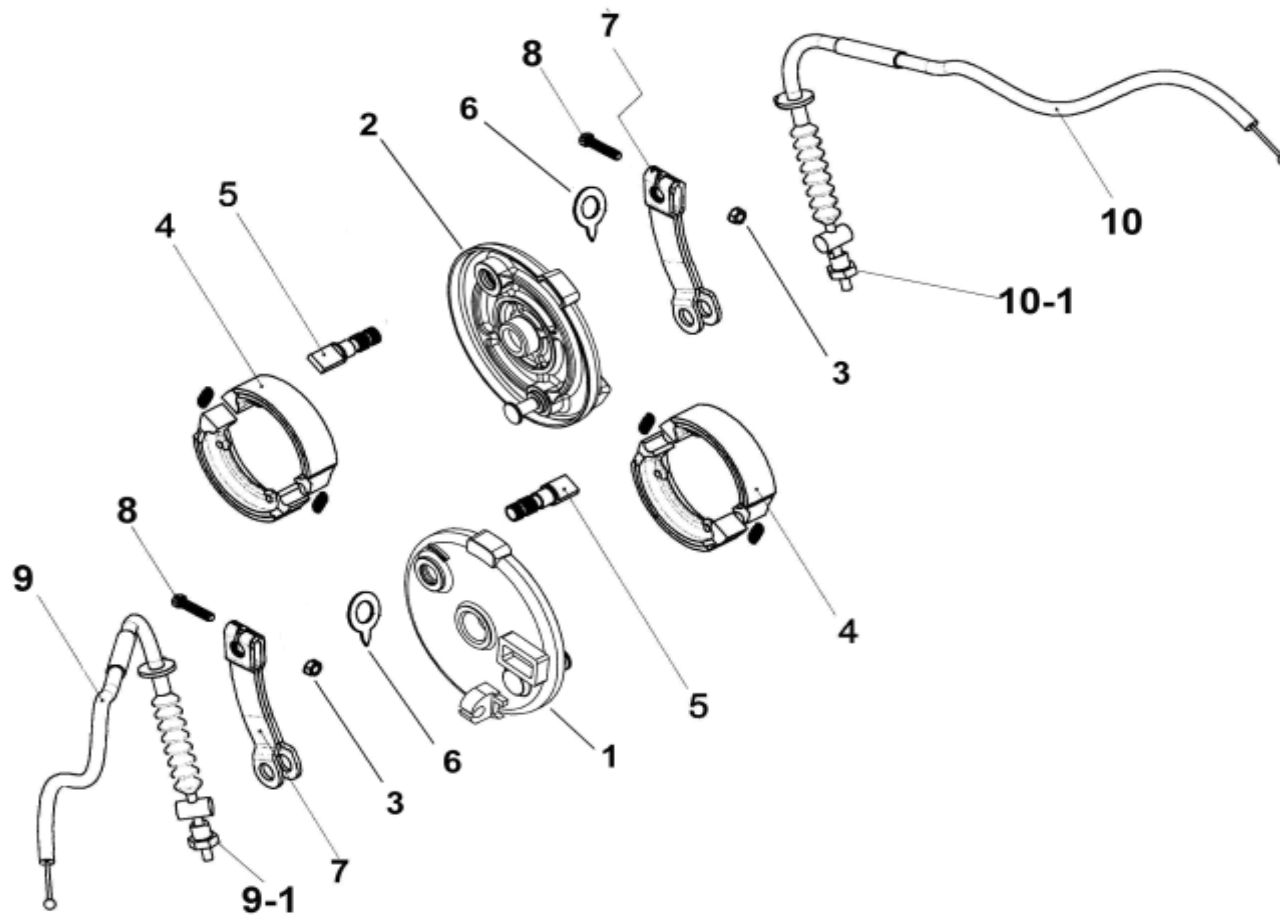
ITEM	PART NO.	NAME	Q'TY	品名	VIN NO	U.S	H.L	A.T	TW	C.A
21		FRONT WHEEL								
21-1	D471A-FIA0-1000	FRONT WHEEL ASSY.,LEFT(21×7-10)	1	左前輪總成	2A006347					
	D471A-FIA0-9000	FRONT WHEEL ASSY.,LEFT(21×7-10)	1	左前輪總成	5A004923					
21-1-1	D4710-FIA0-1000	WHEEL TIRE (21×7-10)	1	輪胎	2A006347					
21-1-2	D4601-FIA0-0000	WHEEL RIM (10"×5.5)	1	輪圈	2A006347					
	D4601-FIA0-9000	WHEEL RIM (10"×5.5)	1	輪圈	5A004923					
21-2	D471B-FIA0-1000	FRONT WHEEL ASSY.,RIGHT(21×7-10)	1	右前輪總成						
	D471B-FIA0-9000	FRONT WHEEL ASSY.,RIGHT(21×7-10)	1	右前輪總成	5A004923					
21-2-1	D4710-FIA0-1000	WHEEL TIRE (21×7-10)	1	輪胎	2A006347					
21-2-2	D4601-FIA0-0000	WHEEL RIM (10"×5.5)	1	輪圈	2A006347					
	D4601-FIA0-9000	WHEEL RIM (10"×5.5)	1	輪圈	5A004923					
21-3	D4610-FIA0-9000	BRAKE DRUM, FRONT	2	前剎車鼓	5A004923					
21-3-1	D4612-9FA0-0000	BOLT,STUD	8	緊配螺栓						
21-4	I6100-6003LLU	BEARING(6003-LLU)	4	軸承						
21-5	I1307-24035-10	OUTER OIL SEAL(ψ24 ×35×7)	4	外油封	2A006347					
21-6	D4621-FIA0-0000	OUTER SPACER	2	外定距套	2A006347					
21-7	D4620-FIA0-0000	INNER SPACER	2	內定距套	2A006347					
21-8	D4611-9EA0-0000	FLANGE SELF-LOCK NUT(M10)	8	凸緣螺帽(M10)						
21-9	I9905-14200	WASHER(ψ15×24×2.3)	2	墊圈						
21-10	I5500-14100	CASTLE NUT(M14)	2	城堡螺帽(M14)						
21-11	I4201-46325	COTTER PIN	2	開口銷	5A004957					
21-12	D4609-9FA0-0000	RUBBER CAP	2	橡膠套						

## 22. REAR WHEEL



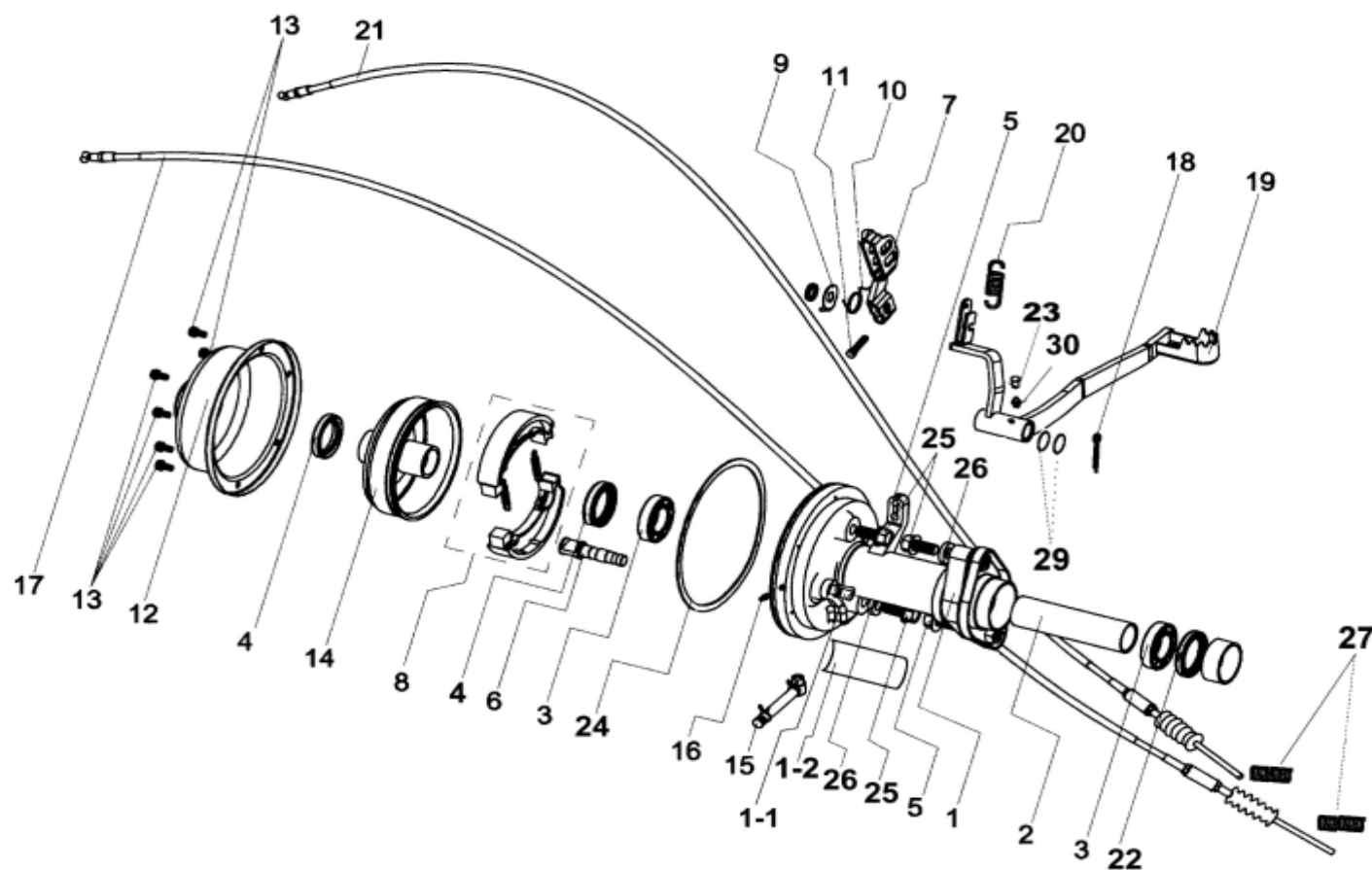
ITEM	PART NO.	NAME	Q'TY	品名	VIN NO	U.S	H.L	A.T	TW	C.A
22		REAR WHEEL								
22-1	D471C-FIA0-0000	REAR WHELL ASSY.,LEFT(22×10-8)	1	左後輪總成						
	D471C-FIA0-8000	REAR WHELL ASSY.,LEFT(22×10-10)	1	左後輪總成						
22-1-1	D4720-FIA0-0000	WHEEL TIRE (22×10-8)	1	輪胎						
	D4720-FIA0-9000	WHEEL TIRE (22×10-10)	1	輪胎						
22-1-2	D4602-FIC0-0000	WHEEL RIM (8"×8)	1	輪圈(8×8)						
	D4602-FIC0-9000	WHEEL RIM (10"×8)	1	輪圈(8×8)	5A004923					
22-2	D471D-FIA0-0000	REAR WHELL ASSY.,RIGHT(22×10-8)	1	右後輪總成						
	D471D-FIA0-8000	REAR WHELL ASSY.,RIGHT(22×10-10)	1	右後輪總成						
22-2-1	D4720-FIA0-0000	WHEEL TIRE (22×10-8)	1	輪胎(22×10-8)						
	D4720-FIA0-9000	WHEEL TIRE (22×10-10)	1	輪胎(22×10-10)						
22-2-2	D4602-FIA0-0000	WHEEL RIM (8"×8)	1	輪圈(8"×8")						
	D4602-FIC0-9000	WHEEL RIM (10"×8)	1	輪圈(10"×8")						
22-3	D2705-FIA0-9000	SHAFT CONNECTER WITH BOLTS	2	後軸聯結器總成						
22-4	D4611-9EA0-0000	NUT,FLANGE CHECK(M10)	8	凸緣防鬆螺帽(M10)						
22-5	D2309-5EA0-0000	WHEEL AXLE WASHER, REAR(ψ14 ×40×4.5)	2	後輪軸墊片						
22-6		CANCEL,PREARRANGE		取消保留						
22-7	I4012-140H0	CASTLE NUT(M14)	2	六角溝槽螺帽(M14)						
22-8	I4201-46325	COTTER PIN	2	開口銷						
22-9	D4609-5EA0-0000	RUBBER COVER	2	橡膠套						

## 23. FRONT BRAKE



ITEM	PART NO.	NAME	Q'TY	品名	VIN NO	U.S	H.L	A.T	TW	C.A
23		FRONT BRAKE								
23-1	D5351-FIA0-0000	FRONT BRAKE PANEL COMP., LEFT	1	前剎車盤(左)	2A006347					
23-2	D5352-FIA0-0000	FRONT BRAKE PANEL COMP., RIGHT	1	前剎車盤(右)	2A006347					
23-3	I5707-06500	NUT,HEXANGE	2	六角螺帽						
23-4	D312A-A04-8000	FRONT BRAKE SHOE COMP. (ψ80)	2	前煞車蹄片組						
23-5	D5141-FIA0-1000	FRONT BRAKE ARM CAM	2	前煞車凸輪	2A006347					
23-6	D5145-FIA0-0000	BRAKE INDICATOR,FRONT	2	前煞車指示器	2A006347					
23-7	D5410-FIA0-0000	FRONT BRAKE ARM	2	前剎車搖臂						
23-8	I0020-06030	BOLT,HEXAGON(M6×30)	2	六角螺栓(M6×30)						
23-9	E5450-FIA0-1000	CABLE, FRONT BRAKE(LEFT)	1	前煞車線總成(左)	2A006347					
23-9-1	E5452-FIA0-1000	NUT,ADJUSTING	1	前煞車線調整螺帽						
23-10	E5451-FIA0-1000	CABLE, FRONT BRAKE(RIGHT)	1	前煞車線總成(右)	2A006347					
23-10-1	E5452-FIA0-1000	NUT,ADJUSTING	1	前煞車線調整螺帽						

## 24. REAR BRAKE (DRUM BRAKE)

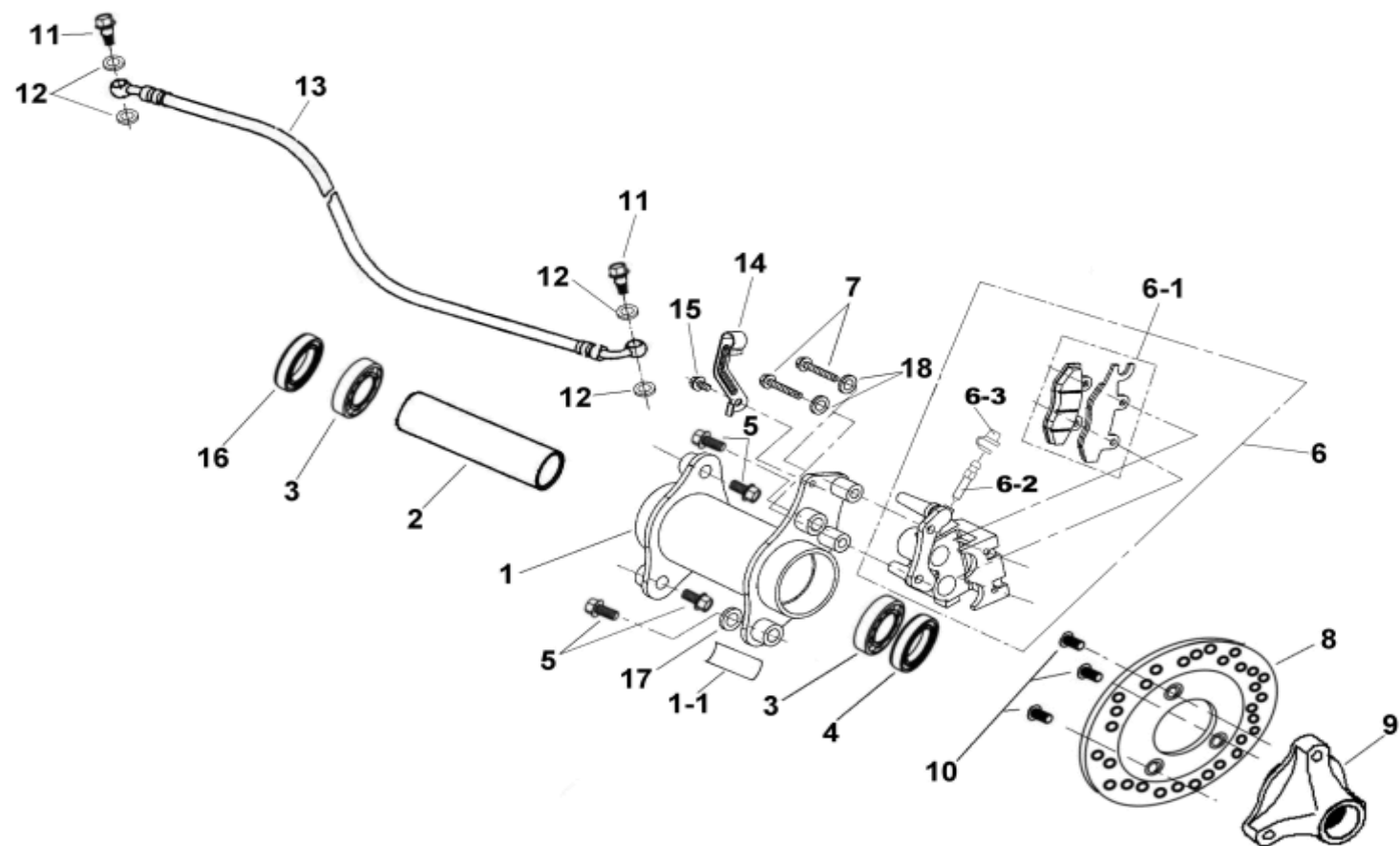


ITEM	PART NO.	NAME	Q'TY	品名	VIN NO	U.S	H.L	A.T	TW	C.A
24		REAR BRAKE (DRUM BRAKE)		鼓煞版						
24-1	D231A-FIA0-0000	BEARING SEAT ASSY., REAR WHEEL AXLE	1	後輪軸承座總成						
24-1-1	D3142-FIA0-0000	REAR SHAFT BRAKE	1	後煞車固定銷						
24-1-2	H7106-FIA0-0000	WARNING STICKER , CHAIN	1	鏈條警告貼紙						
24-2	D2311-FIA0-0000	SPACER	1	軸承座隔筒						
24-3	I6100-6007LLU	BEARING(6007LLU)	2	軸承(6007LLU)						
24-4	D2315-FIA0-0000	OIL SEAL(ψ43×62×12)	2	油封						
24-5	I0141-12036-01	BOLT,FLANGE (M12×36)	1	凸緣螺栓(M12×36)						
24-6	D3141-FIA0-0010	BRAKE ARM CAM, REAR	1	後搖臂凸輪						
24-7	D3410-FIA0-0000	BRAKE ARM, REAR	1	後煞車搖臂						
24-8	D3120-FIA0-0000	BRAKE SHOE COMP., REAR(ψ130)	1	後煞車蹄片組						
24-9	D3145-FIA0-0000	BRAKE INDICATOR, REAR	1	後煞車指示器						
24-10	D3419-FIA0-0000	RETURN SPRING, REAR	1	後復歸彈簧						
24-11	I0020-06030	BOLT(M6×30)	1	螺栓(M6×30)						
24-12	D3615-FIA0-0000	DRUM COVER, REAR	1	後煞車鼓蓋						
24-13	I8557-06012	BOLT WITH WASHER(M6×12)	6	盤頭螺絲附墊圈						
24-14	D3610-FIA0-1000	REAR BRAKE DRUM	1	後煞車鼓						
24-15	D2316-5EA0-0000	DRAIN PIPE ASSY.	1	排水管總成						



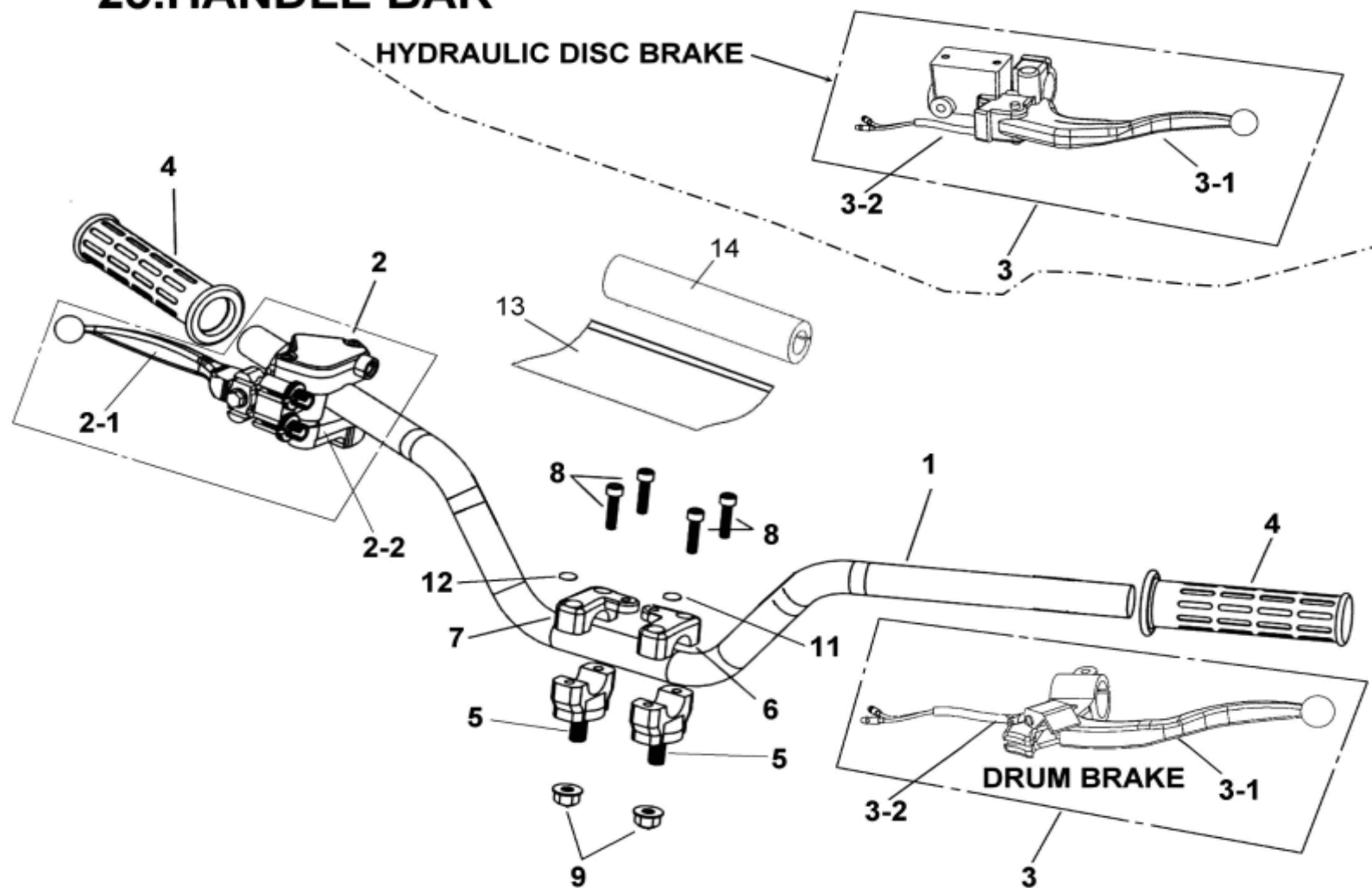
ITEM	PART NO.	NAME	Q'TY	品名	VIN NO	U.S	H.L	A.T	TW	C.A
24		REAR BRAKE (DRUM BRAKE)		鼓煞版						
24-16	D2319-FIA0-0000	PLUG, PURGE HOLE	1	吹氣孔塞						
24-17	E3450-FIA0-0000	CABLE, REAR BRAKE	1	後煞車線總成						
24-18	I9900-30032	COTTER PIN	1	開口銷						N/A
24-19	E0708-FIA0-0000	BRAKE PEDAL	1	腳煞車踏桿						N/A
24-20	I5016-5BA1-0000	SIDE STAND SPRING	1	側支架彈簧						N/A
24-21	E0710-FIA0-0000	BRAKE PEDAL CABLE	1	腳煞車線						N/A
24-22	D2313-FIA0-0000	OIL SEAL(ψ48×62×7)	1	油封						
24-23	E0209-5EA0-9000	CAP,GREASE VALVE	1	黃油嘴蓋						N/A
24-24	D3611-FIA0-0000	O-RING (w2.4×d181.8)	1	O型環						
24-25	I0141-12040-01	BOLT ,FLANGE	3	六角凸緣螺栓						
24-26	D2203-5EA0-0000	WASHER (ψ25×13×5)	2	墊片						
24-27	D3416-FIA0-0000	SPRING,REAR BRAKE CABLE	2	後煞車線彈簧		2	2	2	1	2
24-28		CANCEL,PREARRANGE		取消預留						
24-29	D2314-FIA0-0000	O-RING(w2.4×d13.8)	2	O型環						N/A
24-30	I6600-06000	GREASE VALVE(1/4")	1	黃油嘴(1/4")						N/A

## 24.REAR BRAKE(HYDRAULIC DISC BRAKE)



ITEM	PART NO.	NAME	Q'TY	品名	VIN NO	U.S	H.L	A.T	TW	C.A
24		REAR BRAKE (HYDRAULIC DISC BRAKE)		碟煞版						
24-1	D2310-FIA0-1000	BEARING SEAT ASSY., REAR WHEEL AXLE	1	後輪軸承座總成						
24-1-1	H7106-FIA0-0000	WARNING STICKER , CHAIN	1	鏈條警告貼紙						
24-2	D2311-FIA0-0000	SPACER	1	軸承座隔筒						
24-3	I6100-6007LLU	BEARING(6007LLU)	2	軸承(6007LLU)						
24-4	D2315-FIA0-0000	OIL SEAL(ψ43×62×12)	1	油封						
24-5	I0141-12036-01	BOLT,FLANGE (M12×36)	4	凸緣螺栓(M12×36)						
24-6	G7130-BCA0-0000	BRAKE CALLIPER	1	煞車卡鉗						
24-6-1	G7131-BCA0-0000	BRAKE SHOE COMP	1	煞車蹄片						
24-6-2	G7132-BCA0-0000	BOLT LEAKAGE	1	放氣螺絲						
24-6-3	G7133-BCA0-0000	CAP LEAKAGE	1	放氣帽						
24-7	I0105-08035	BOLT,FLANGE(M8×35)	2	凸緣螺栓	3A002725					
24-8	D3520-FIA0-0000	BRAKE DISK	1	煞車盤						
24-9	D3251-FIA0-0000	BRAKE DISK MOUNTING SEAT	1	煞車盤固定座						
24-10	I0110-10811	BOLT,ROUND HEAD(M10)	3	煞車盤圓頭螺栓						
24-11	I0401-10034	UNION BOLT,BRAKE HOSE	2	煞車油管通油螺栓						
24-12	I0201-10118	WASHER,PLATE	4	銅墊圈						
24-13	D3210-FIA0-0000	BRAKE OIL TUBE	1	後煞車油管						
24-14	G7111-BCA0-0000	BRAKE FUEL TUBE, CLIP	1	煞車油管夾						
24-15	I0149-06012	BOLT,FLANGE(M6×12)	1	凸緣螺栓						
24-16	D2313-FIA0-0000	OIL SEAL(ψ48×62×7)	1	油封						
24-17	D2203-5EA0-0000	WASHER (ψ25×13×5)	1	墊片						
24-18	I9901-08100	SPRING WASHER	2	彈簧墊片	3A002725					

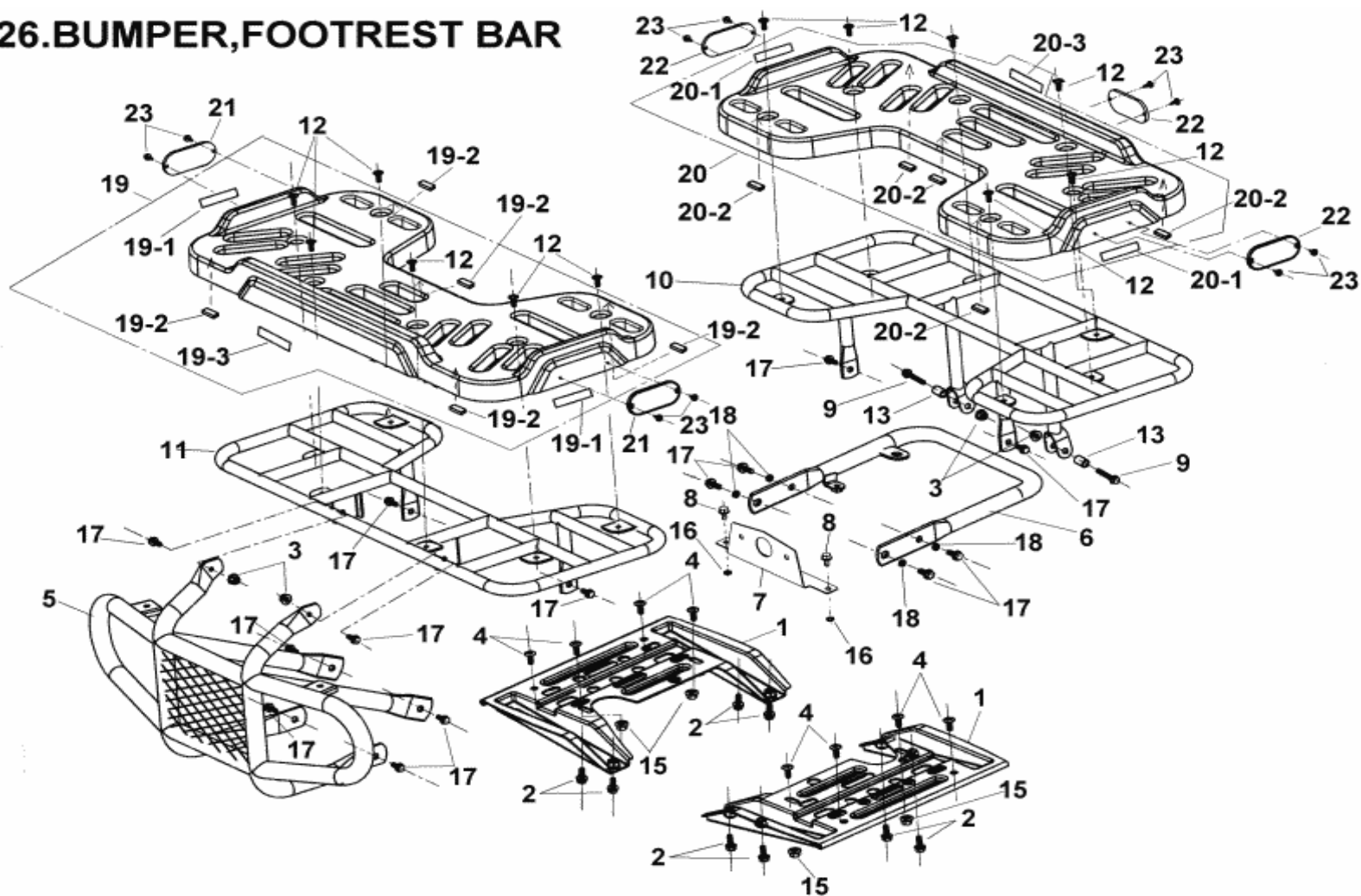
## 25.HANDLE BAR



ITEM	PART NO.	NAME	Q'TY	品名	VIN NO	U.S	H.L	A.T	TW	C.A
25		HANDLE BAR (DRUM BRAKE)		鼓煞版						
25-1	E3100-FIA0-9000	HANDLE BAR ASSY.	1	手把總成	4A004873					
25-2	E3180-9FA0-0010	LEVEL ASSY., RIGHT	1	右拉桿加油座總成						
25-2-1	E3181-9FA0-0000	LEVEL SET,RIGHT	1	右拉桿組						
25-2-2	E319A-5EA0-0000	LEVEL ACCELERATE	1	加油座拉桿						
25-3	E3170-FIA0-0000	LEVEL ASSY., LEFT	1	左拉桿總成						
25-3-1	E3171-FIA0-0000	LEVEL,LEFT	1	左拉桿						
25-3-2	E3174-5EA0-0000	BRAKE SWITCH ASSY.	1	煞車開關						
25-4	E3166-5EA0-0000	GRIP HANDLE	2	握把						
25-5	E3112-5EA0-0000	HANDLE BAR CLAMP, BOTTOM	2	手把固定座(底座)						
25-6	E3110-5EA0-0000	HANDLE BAR CLAMP, CAP, LEFT	1	手把固定座(上蓋,L)						
25-7	E3111-5EA0-0000	HANDLE BAR CLAMP, CAP, RIGHT	1	手把固定座(上蓋,R)						
25-8	I0050-06025	SCREW ,SOCKET (M6×25)	4	內六角螺絲(M6*25)						
25-9	I5611-10200	NUT,FLANGE CHECK (M10)	2	凸緣防鬆螺帽(M10)						
25-10		CANCEL,PREARRANGE		取消預留						
25-11	H7111-9FA0-0000	STICKER,HANDLE BAR CLAMP,LEFT	1	手把固定座貼紙(L)						
25-12	H7112-9FA0-0000	STICKER,HANDLE BAR CLAMP,RIGHT	1	手把固定座貼紙(R)						
25-13	E3101-5EE0-1000	HANDLE BAR PROTECT ASSY	1	手把護套外套						
25-14	E3102-5EE0-1000	HANDLE BAR PROTECT	1	手把護套筒(海棉)						

ITEM	PART NO.	NAME	Q'TY	品名	VIN NO	U.S	H.L	A.T	TW	C.A
25		HANDLE BAR (HYDRAULIC DISC BRAKE)		碟煞版						
25-1	E3100-FIA0-9000	HANDLE BAR ASSY.	1	手把總成	2004 改款					
25-2	E3180-FIA0-0000	LEVEL ASSY., RIGHT	1	右拉桿加油座總成					N/A	
25-2-1	E3181-5FA0-0000	LEVEL,RIGHT	1	右拉桿					N/A	
25-2-2	E319A-5FA0-0000	LEVEL ACCELERATE	1	加油座拉桿					N/A	
25-3	D3200-FIA0-0000	BRAKE MASTER CYLINDER,LEFT	1	左煞車主缸(φ12.7)					N/A	
25-3-1	D3201-FIA0-0000	LEVEL,LEFT	1	左拉桿						
25-3-2	D3202-FIA0-0000	BRAKE SWITCH ASSY.	1	煞車開關						
25-4	E3166-5EA0-0000	GRIP HANDLE	2	握把						
25-5	E3112-5EA0-0000	HANDLE BAR CLAMP, BOTTOM	2	手把固定座(底座)						
25-6	E3110-5EA0-0000	HANDLE BAR CLAMP, CAP, LEFT	1	手把固定座(上蓋,L)						
25-7	E3111-5EA0-0000	HANDLE BAR CLAMP, CAP, RIGHT	1	手把固定座(上蓋,R)						
25-8	I0050-06025	SCREW ,SOCKET (M6×25)	4	內六角螺絲(M6*25)						
25-9	I5611-10200	NUT,FLANGE CHECK (M10)	2	凸緣防鬆螺帽(M10)						
25-10		CANCEL,PREARRANGE		取消預留						
25-11	H7111-9FA0-0000	STICKER,HANDLE BAR CLAMP,LEFT	1	手把固定座貼紙(L)						
25-12	H7112-9FA0-0000	STICKER,HANDLE BAR CLAMP,RIGHT	1	手把固定座貼紙(R)						
25-13	E3101-5EE0-1000	HANDLE BAR PROTECT	1	手把護套外套	2004 改款					
25-14	E3102-5EE0-1000	HANDLE BAR PROTECT FOAM	1	手把護套筒(海棉)	2004 改款					

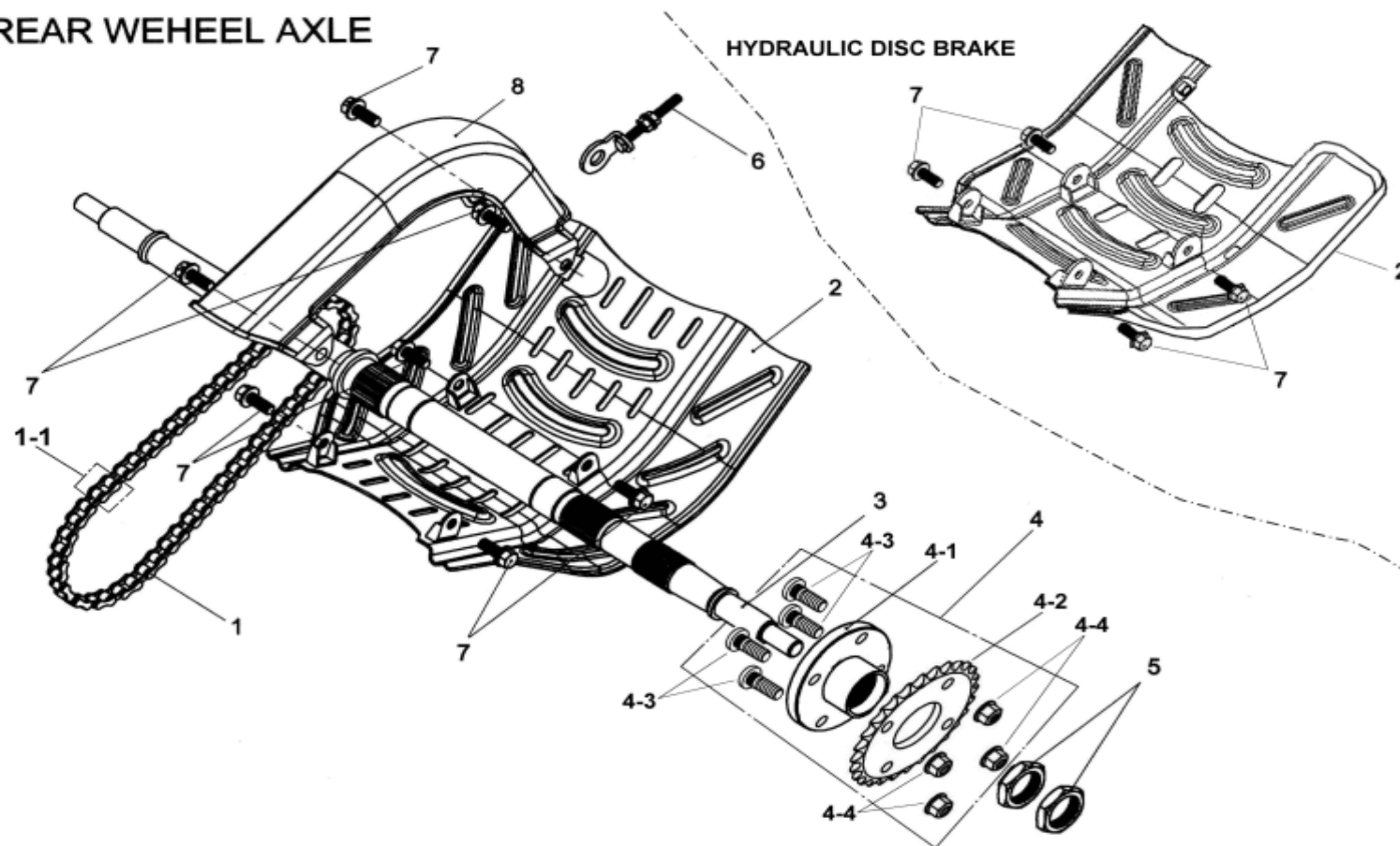
## 26.BUMPER,FOOTREST BAR



ITEM	PART NO.	NAME	Q'TY	品名	VIN NO	U.S	H.L	A.T	TW	C.A
26		BUMPER, FOOTREST BAR								
26-1	E0700-FIA0-0000	FOOTREST BAR	2	置腳踏板固定板						
26-2	I7507-FIA0-0000	SCREW,HEXAGON HEAD WITH WASHER(M8×16)	8	六角螺絲附墊圈						
26-3	I5616-08200	NUT,FLANGE CHECK(M8)	4	凸緣防鬆螺帽(M8)						
26-4	I0149-06823	SCREW,BUTTON HEAD	8	扁圓頭螺絲						
26-5	E0400-FIB0-0000	BUMPER ASSY.	1	前防護桿總成						
26-6	E0410-FIA0-1000	REAR BAR ASSY	1	後防護桿總成	2A000011					
26-7	E0412-FIA0-0000	TAIL LIGHT HOLDER	1	尾燈托架						
26-8	I0149-06012	BOLT ,FLANGE (M6×12)	2	凸緣螺栓(M6×12)						
26-9	I0105-08040	BOLT ,FLANGE (M8×40)	2	凸緣螺栓(M8×40)						
26-10	E0411-FIB0-0000	REAR PACK	1	後置物架	2A000001					
26-11	E0413-FIB0-0000	FRONT PACK	1	前置物架	2A000001					
26-12	E0117-9EA0-0000	SCREW,BUTTON HEAD (M6×18)	12	扁圓頭螺絲						
26-13	E0402-9FA0-0000	COLLAR, BUMPER	2	防護桿套筒						
26-14		PREARRANGE		取消預留						
26-15	I5611-06200-0G	NUT	4	自鎖螺帽(墨綠)						
26-16	C510C-FIA0-0000	RUBBER PAD	2	橡膠墊片						
26-17	I0149-08016	BOLT ,FLANGE (M8×16)	14	凸緣螺栓(M8×16)						
26-18	I9901-08100	SPRING WASHER	4	彈簧墊圈						
26-19	F4000-FIB0-0000	CARRIER COVER FRONT	1	前置物架上承板						N/A
	F4000-FIC0-0000	CARRIER COVER FRONT	1	前置物架上承板		N/A	N/A	N/A	N/A	
26-19-1	H7116-FIB0-0000	FRONT REFLECTOR,STICKER	2	前反光貼紙(黃)						N/A
26-19-2	C1501-FIB0-0000	FOAM-RUBBER STICK	5	橡膠海棉條						
26-19-3	H7113-9FB0-0000	STICKER ,PACKAGE	1	置物架貼紙						
26-20	F4001-FIB0-0000	CARRIER COVER REAR	1	後置物架上承板						N/A
	F4001-FIC0-0000	CARRIER COVER REAR	1	後置物架上承板		N/A	N/A	N/A	N/A	
26-20-1	H7117-FIB0-0000	REAR REFLECTOR,STICKER	2	後反光貼紙(紅)						N/A
26-20-2	C1501-FIB0-0000	FOAM-RUBBER STICK	5	橡膠海棉條						
26-20-3	H7113-9FB0-0000	STICKER ,PACKAGE	1	置物架貼紙						
26-21	C3741-5EA4-0000	FRONT REFLECTOR,(AMBER)	2	前反光片(琥珀色)		N/A	N/A	N/A	N/A	
26-22	C3742-5EA4-0000	REAR REFLECTOR,(RED)	3	後反光片(紅色)		N/A	N/A	N/A	N/A	
26-23	I2804-04010-5C	SELF-TAPPING SCREW	10	自攻螺絲(M4×13L)		N/A	N/A	N/A	N/A	

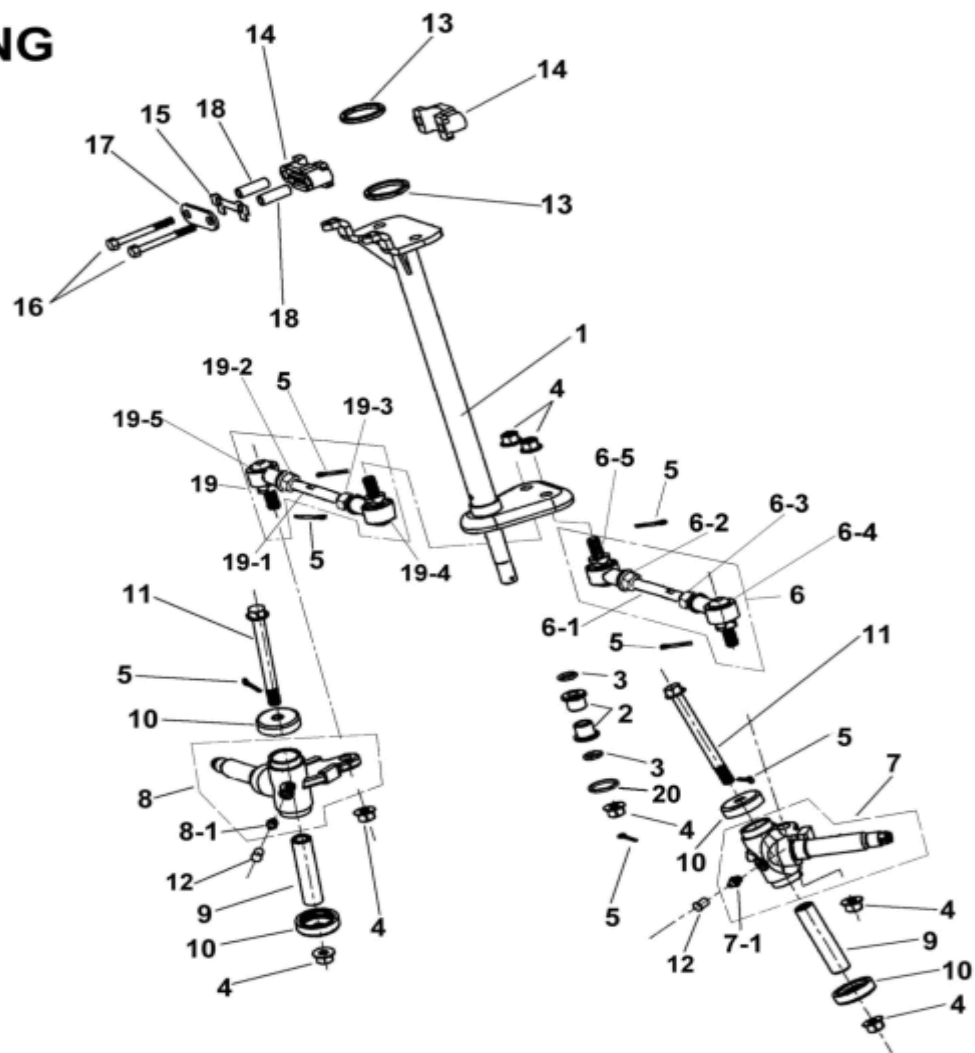


## 27.REAR WEHEEL AXLE



ITEM	PART NO.	NAME	Q'TY	品名	VIN NO	U.S	H.L	A.T	TW	C.A
27		REAR WHEEL AXLE(DRUM BRAKE)		鼓煞版						
27-1	D0100-FIA0-0010	DRIVE CHAIN ASSY.	1	鏈條(520H×78 目)						
27-1-1	D0104-FIC0-0000	MASTERLINK (#520)	1	鏈條接頭(#520)						
27-2	D0101-FIA0-0000	PROTECT COVER	1	軸承座防護蓋						
27-3	D2301-FIA0-0000	REAR AXLE	1	後輪軸						
27-4	D0110-FIA0-0000	SPROCKET HOLDER,REAR ASSY.	1	後鏈齒輪固定座總成						
27-4-1	D0111-FIA0-0000	SPROCKET HOLDER,REAR(34T)	1	後鏈齒輪固定座						
27-4-2	D1111-FIA0-0000	GEAR(520×34T)	1	齒輪						
27-4-3	D2706-9EA0-0000	STUD(M10)	4	緊配螺栓						
27-4-4	I5611-10200	NUT,HEXAGON CHECK(M10)	4	六角防鬆螺帽						
27-5	D2302-FIA0-0000	NUT REAR WHEEL AXLE(M28×1.5)	2	後輪軸螺帽						
27-6	D0120-FIA0-0000	ADJUSTER, CHAIN	1	鏈條調整器						
27-7	I0149-08016	FLANGE BOLT(M8×16)	7	凸緣螺栓(M8×16)						
27-8	D0102-FIA0-0000	DRIVE CHAIN COVER	1	鏈條防護蓋						
27-1	D0100-FIB0-0000	OIL SEAL DRIVE CHAIN ASSY.	1	油封鏈條(520H×78 目)	2A000248					
27-2	D0101-FIA0-1000	PROTECT COVER	1	軸承座防護蓋	2A000248					
27-3	D2301-FIA0-0000	REAR AXLE	1	後輪軸						
27-4	D0110-FIA0-0000	SPROCKET HOLDER,REAR ASSY.	1	後鏈齒輪固定座總成						
27-4-1	D0111-FIA0-0000	SPROCKET HOLDER,REAR(34T)	1	後鏈齒輪固定座						
27-4-2	D1111-FIA0-0000	GEAR(520×34T)	1	齒輪						
27-4-3	D2706-9EA0-0000	STUD(M10)	4	緊配螺栓						
27-4-4	I5611-10200	NUT,HEXAGON CHECK(M10)	4	六角防鬆螺帽						
27-5	D2302-FIA0-0000	NUT REAR WHEEL AXLE(M28×1.5)	2	後輪軸螺帽						
27-6	D0120-FIA0-0000	ADJUSTER, CHAIN	1	鏈條調整器						
27-7	I0149-08016	BOLT FLANGE (M8×16)	7	凸緣螺栓(M8×16)						
27-8	D0102-FIA0-0000	DRIVE CHAIN COVER	1	鏈條防護蓋						

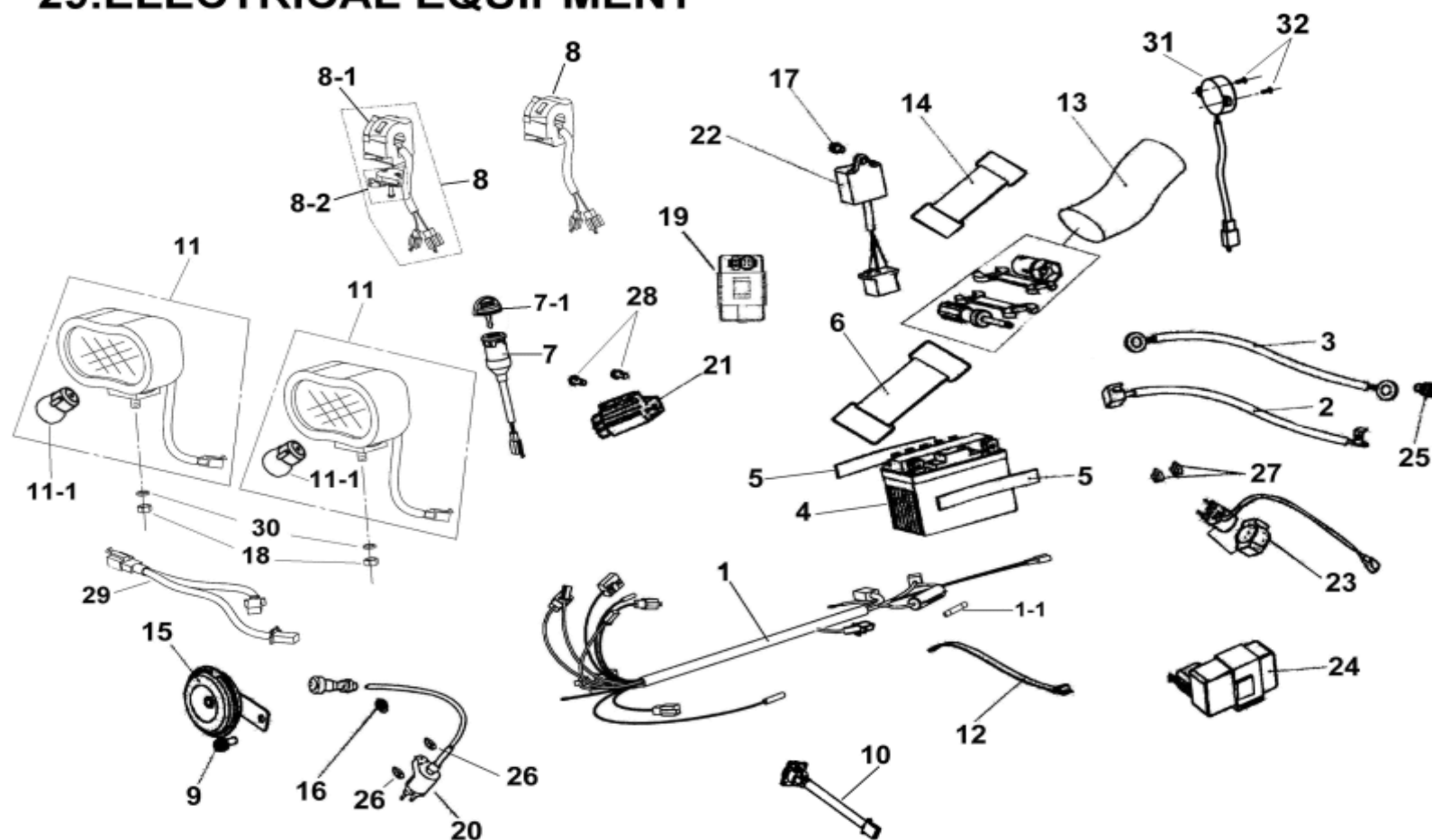
## 28.STEERING



ITEM	PART NO.	NAME	Q'TY	品名	VIN NO	U.S	H.L	A.T	TW	C.A
28		STEERING								
28-1	E3200-FIA0-1000	SHAFT ASSY., STEERING	1	轉向桿總成	2A006347					
28-2	E3201-FIA0-0000	OIL LINER	2	轉向桿含油襯套						
28-3	E3204-FIA0-0000	O-RING (W2.4×d14.8)	2	O型環(w2.4×d14.8)						
28-4	I5611-10200	NUT,FLANGE CHECK (M10)	7	凸緣防鬆螺帽(M10)						
28-5	I9900-25019	COTTER PIN(3/32"×3/4")	7	開口銷						
28-6	E0258-FIA0-1000	STEERING TIE-ROD ASSY,LEFT	1	轉向拉桿(左)	2A006347					
28-6-1	E0251-FIA0-1000	BOLT,STUD	1	雙頭牙螺栓						
28-6-2	E0252-5EA0-0000	NUT(R)	1	螺帽(右)						
28-6-3	E0253-5EA0-0000	NUT(L)	1	螺帽(左)						
28-6-4	E0255-FIA0-1000	UNIVERSAL JOINT(L)	1	萬向接頭(左)						
28-6-5	E0256-FIA0-1000	UNIVERSAL JOINT(R)	1	萬向接頭(右)						
28-7	E0205-FIA0-1000	KNUCKLE, LEFT	1	前輪轉向軸(左)	2A006347					
28-7-1	I6600-06000	GREASE VALVE	1	黃油嘴(1/4")						
28-8	E0215-FIA0-1000	KNUCKLE, RIGHT	1	前輪轉向軸(右)	2A006347					
28-8-2	I6600-06000	GREASE VALVE	1	黃油嘴(1/4")						
28-9	E0211-9FA0-0000	SLEEVE	2	含油套筒						
28-10	E0203-9FA0-0000	CAP	4	封蓋						

ITEM	PART NO.	NAME	Q'TY	品名	VIN NO	U.S	H.L	A.T	TW	C.A
28		STEERING								
28-11	I0102-10105	FLANGE PIN HOLE BOLT(M10×105)	2	凸緣銷孔螺栓						
28-12	E0209-5EA0-9000	CAP, GREASE VALVE	2	黃油嘴蓋						
28-13	E3209-FIA0-0000	OIL SEAL(ψ31.8 ×37.8×4)	2	油封						
28-14	E3202-FIA0-0000	HOLDER, STEERING SHAFT	2	轉向桿固定環						
28-15	E3203-FIA0-0000	FIX PLATE, STEERING SHAFT	1	轉向桿固定片						
28-16	I0020-08060	BOLT,HEXAGON HEAD(M8×60)	2	六角螺栓(M8×60)						
28-17	E3210-FIA0-0000	HOLDER, STEERING SHAFT PRESSED PLATED	1	轉向桿固定環壓板						
28-18	E3208-FIA0-0000	STEERING , COLLAR	2	固定環隔筒						
28-19	E0259-FIA0-1000	STEERING TIE-ROD ASSY,RIGHT	1	轉向拉桿(右)	2A006347					
28-19-1	E0251-FIA0-1000	BOLT,STUD	1	雙頭牙螺栓						
28-19-2	E0252-5EA0-0000	NUT(R)	1	螺帽(右)						
28-19-3	E0253-5EA0-0000	NUT(L)	1	螺帽(左)						
28-19-4	E0255-FIA0-1000	UNIVERSAL JOINT(L)	1	萬向接頭(左)						
28-19-5	E0256-FIA0-1000	UNIVERSAL JOINT(R)	1	萬向接頭(右)						
28-20	I4608-06819	O-RING	1	O型環						

## 29.ELECTRICAL EQUIPMENT

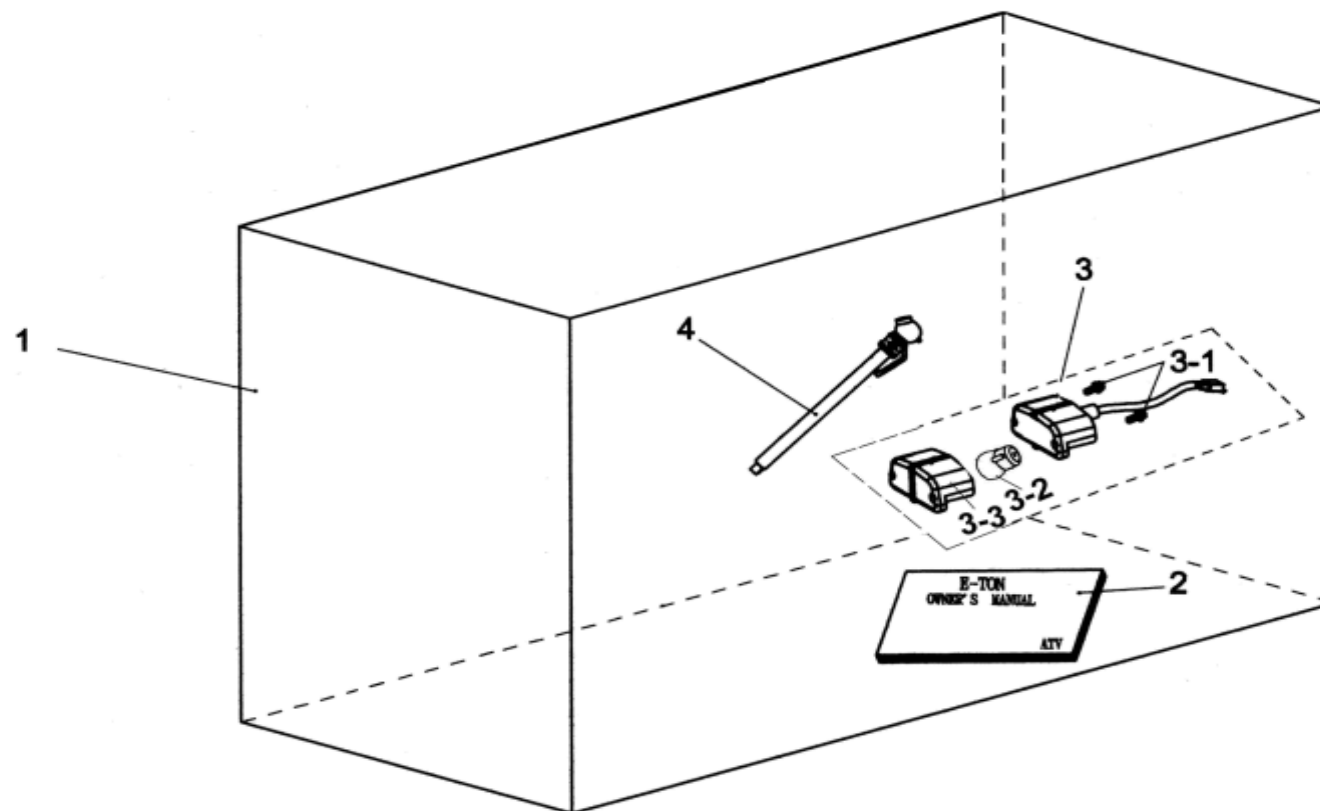


ITEM	PART NO.	NAME	Q'TY	品名	VIN NO	U.S	H.L	A.T	TW	C.A
29		ELECTRICAL EQUIPMENT								
29-1	C2100-FIA0-0000	MAIN WIRE ASSY.	1	主配線						
29-1-1	C2010-FIA0-0000	FUSE (10A)	1	保險絲						
29-2	C2101-FIA0-0000	POSITIVE HIGHT PRESSURE CABLE	1	正極高壓導線						
29-3	C2102-FIA0-1000	NEGATIVE LOW PRESSURE CABLE	1	負極高壓導線						
29-4	C1500-FIA0-0000	BATTERY	1	電瓶						
29-5	C1501-9FA0-0000	FOAM RUBBER STRIP	2	電瓶海棉						
29-6	C1502-9FA0-0000	RUBBER CLAMP, BATTERY(89L)	1	電瓶固定帶						
29-7	C5010-9FA0-0000	MAIN SWITCH ASSY.	1	主開關總成						
29-7-1	C5013-9FA0-0000	MATERIAL KEK	1	鑰匙(素材)						
29-8	C5200-FIA0-0000	LEVER HOLDER ASSY., LEFT	1	左把手開關總成		N/A				N/A
	C5200-FIA0-9000	LEVER HOLDER ASSY., LEFT	1	左把手開關總成			N/A	N/A	N/A	
29-8-1	C5201-FIA0-0000	LEVER HOLDER , LEFT	1	左把手開關			N/A	N/A	N/A	
29-8-2	C5202-5EE0-0000	AIR CUT,LEVER	1	阻風門拉桿			N/A	N/A	N/A	
29-9	I8556-06016	SCREW WITH WASHER(M6×16)	1	盤頭螺絲附墊圈						
29-10	C1802-FIB0-0000	POEWR SUPPLY	1	電源供應座			N/A	N/A	N/A	N/A
29-11	C5030-FIB0-0000	HAED LIGHT	2	頭燈	2A000001					
29-11-1	C5003-FIB0-0000	BULB,HEADLIGHT(12v 20w)	2	燈泡						
29-12	H3936-5AA0-0000	WIRE CLAMP	1	線束帶						
29-13	H9020-FIA0-0000	TOOL PACK	1	工具包						
29-14	H9021-9FA0-0000	TOOL PACK CLAMP	1	工具包固定束帶						

ITEM	PART NO.	NAME	Q'TY	品名	VIN NO	U.S	H.L	A.T	TW	C.A
29		ELECTRICAL EQUIPMENT								
29-15	C8110-5BA0-E000	HORN	1	喇叭						
29-16	I0020-05024	BOLT(M5×24)	1	螺栓						
29-17	I8556-06012	SCREW WITH WASHER	1	盤頭螺絲附墊圈						
29-18	I5800-08300	NUT,FLANGE	2	凸緣螺帽						
29-19	C0410-V30-9001	C.D.I. UNIT ASSY.	1	CDI . UNIT	2A000248					
29-20	C051A-FIA0-0010	IGNITION COIL ASSY.	1	點火線圈						
29-21	C1600-B00-9000	RECTIFIER & REGULATOR	1	整流器						
29-22	C1850-V30-0000	PTC CONTROLLER	1	PTC 控制器						
29-23	C5850-A04-0000	STARTER RELY ASSY.	1	起動開關組						
29-24	C576A-V30-0000	LIGHT CONTROLLER	1	燈號控制器						
29-25	I8557-06012	SCREW ,WITH WASHER(M6×12)	1	盤頭螺絲附墊圈						
29-26	I2140-60001	WASHER	2	高壓線圈墊片						
29-27	I2020-60000	NUT,HEX-FINE	2	起動開關組螺帽						
29-28	I0153-06839	SCREW	2	螺絲						
29-29	C5033-FIB0-0000	HEAD CAMP MAIN WIRE	1	頭燈配線						
29-30	I9901-08100	SPRING WASHER	2	彈簧墊圈						
29-31	C8400-EMA0-0000	BUZZER	1	蜂鳴器						
29-32	I2600-03008	SCREW,FLUSH(M3×08)	2	十字平頭螺絲						



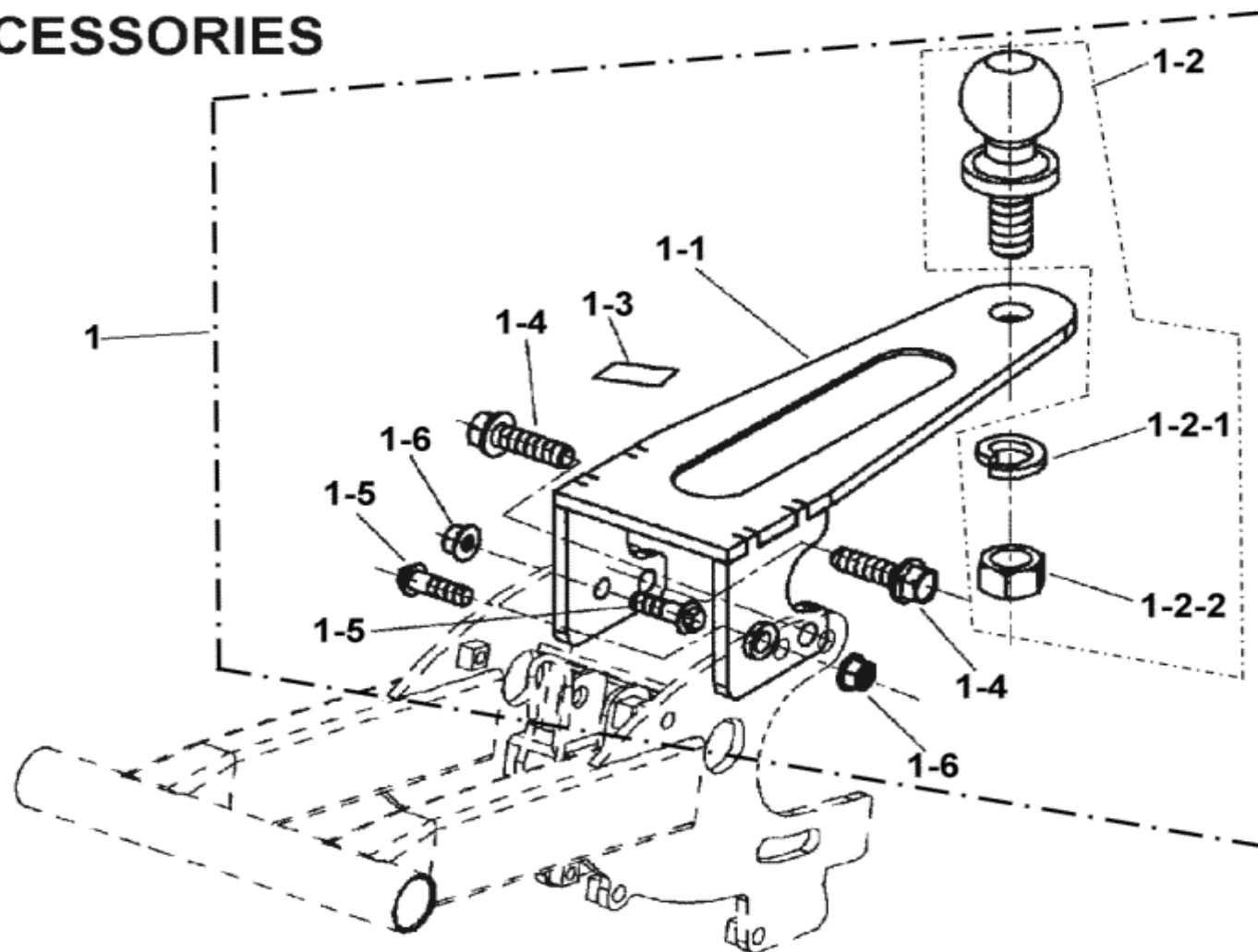
## 30.PACKING CASE,EXTERNAL



ITEM	PART NO.	NAME	Q'TY	品名	VIN NO	U.S	H.L	A.T	TW	C.A
30		PACKING CASE,EXTERNAL(DRUM BRAKE)		鼓煞版						
30-1	H9500-FIB0-0000	PACKING CASE,EXTERNAL	1	包裝外箱					N/A	
30-2	H990A-FIB0-0000	OWNER'S MANUAL	1	使用手冊總成			N/A	N/A	N/A	N/A
	H990A-FIB9-0000	OWNER'S MANUAL	1	使用手冊總成		N/A				
30-2-1	H9900-FIB0-1000	OWNER'S MANUAL	1	使用手冊			N/A	N/A	N/A	N/A
	H9900-FIB9-0000	OWNER'S MANUAL	1	使用手冊		N/A				
30-3	C5031-FIA0-1000	TAIL LIGHT	1	尾燈						
30-3-1	I8501-06010	SCREW,BUTTON HEAD	2	圓頭十字螺絲						
30-3-2	C5004-FIA0-0000	BULB,TAILLIGJT(21w/5w)	1	燈泡						
30-3-3	C5005-FIA0-0000	LAMP SCALE	1	燈殼						
30-4	H9022-5EA0-0000	TIRE GAUGE	1	胎壓計						

ITEM	PART NO.	NAME	Q'TY	品名	VIN NO	U.S	H.L	A.T	TW	C.A
30		PACKING CASE,EXTERNAL(HYDRAULIC DISC BRAKE)		碟煞版						
30-1	H9500-FIB0-0000	PACKING CASE,EXTERNAL	1	包裝外箱					N/A	
30-2	H990A-FIB0-0000	OWNER'S MANUAL	1	使用手冊總成			N/A	N/A	N/A	N/A
	H990A-FIB9-0000	OWNER'S MANUAL	1	使用手冊總成		N/A				
30-2-1	H9900-FIB0-1000	OWNER'S MANUAL	1	使用手冊			N/A	N/A	N/A	N/A
	H9900-FIB9-0000	OWNER'S MANUAL	1	使用手冊		N/A				
	H9900-FIA3-1000	OWNER'S MANUAL	1	使用手冊		N/A	N/A	N/A		N/A
30-3	C5031-FIA0-1000	TAIL LIGHT	1	尾燈						
30-3-1	I8501-06010	SCREW,BUTTON HEAD	2	圓頭十字螺絲						
30-3-2	C5004-FIA0-0000	BULB,TAILLIGJT(21w/5w)	1	燈泡						
30-3-3	C5005-FIA0-0000	LAMP SCALE	1	燈殼						
30-4	H9022-5EA0-0000	TIRE GAUGE	1	胎壓計						

## 31.ACCESSORIES



ITEM	PART NO.	NAME	Q'TY	品名	VIN NO	U.S	H.L	A.T	TW	C.A
31		ACCESSORIES								
31-1	E041C-FIB0-0000	VEHICLE A HOOK ASSY.	1	拖車勾總成			N/A	N/A	N/A	N/A
	E041C-FIB0-8000	VEHICLE A HOOK ASSY.	1	拖車勾總成			N/A			
31-1-1	E0418-FIB0-0000	VEHICLE A HOOK	1	拖車勾						
31-1-2	E0419-FIB0-0000	VEHICLE A HOOK BALL(ψ47.3)	1	拖車勾圓球( 47.3)			N/A	N/A	N/A	N/A
	E0419-FIB0-9000	VEHICLE A HOOK BALL(ψ49.75)	1	拖車勾圓球( 49.75)			N/A			
31-1-2-1	I3300-20000-0B	SPRING WASHER	1	彈簧墊圈						
31-1-2-2	I4100-19016	NUT	1	螺帽						
31-1-3	H7118-FIB0-0000	STICKER,WARNING	1	拖車勾警告貼紙						
31-1-4	I0141-12040-01	BOLT,FLANGE	2	六角凸緣螺栓						
31-1-5	I0149-10030	BOLT,FLANGN(M10×30G)	2	凸緣螺栓						
31-1-6	I5611-10200	NUT,CHECK FLANGE	2	凸緣防鬆螺帽						