

E-TON

PARTS LIST MANUAL



ATV0B

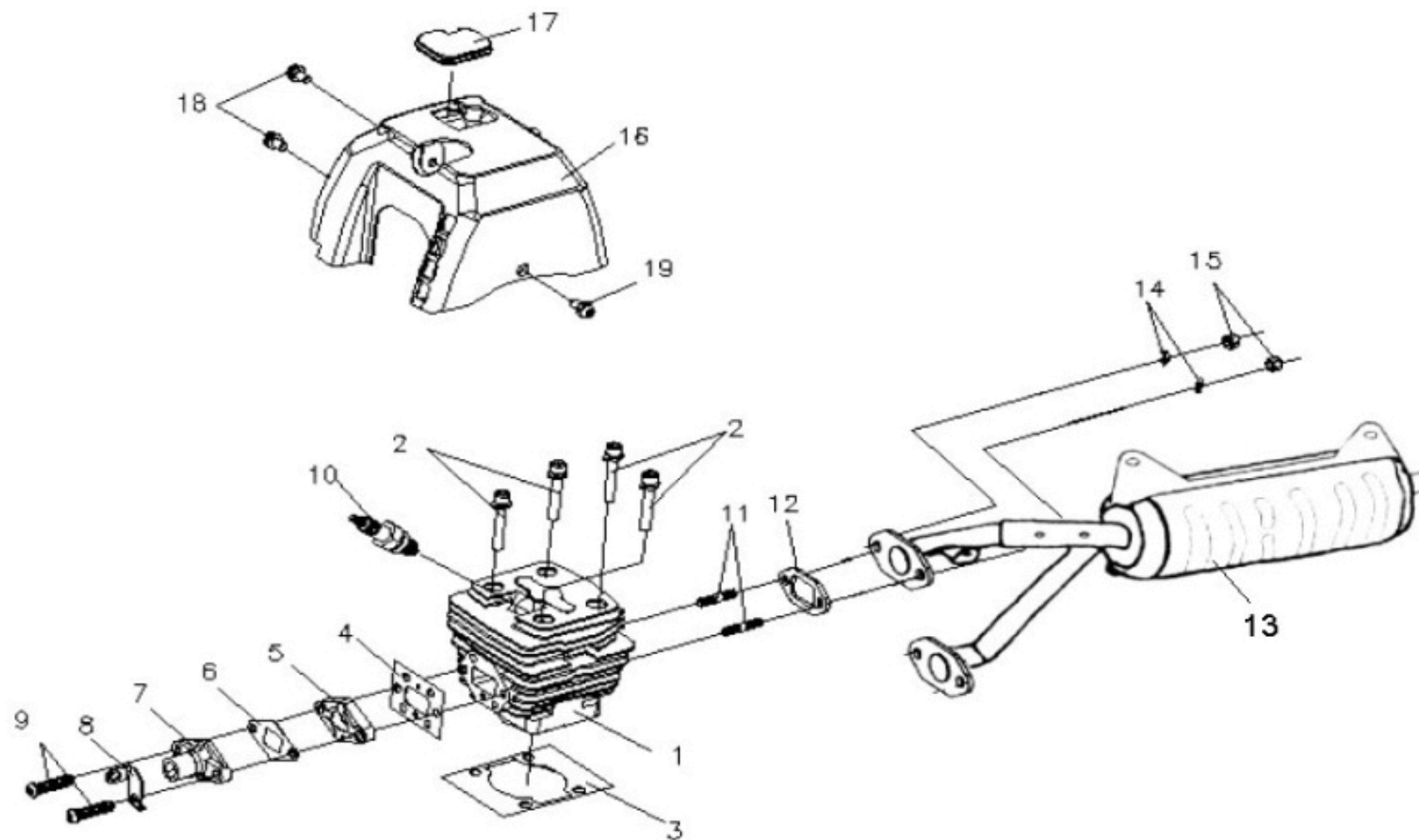
CONTENT

PARTS ITEM

1	CYLINDER, SHROUD CYLINDER	汽缸,汽缸罩蓋
2	CRANK SHAFT, CRANK CASE, PISTON	曲柄軸,曲軸箱,活塞
3	TRANSMISSION	傳動機構
4	CARBURETOR, AIR CLEANER	化油器,空氣濾淨器
5	STARTER、ENG ASSY	起動裝置、引擎總成
7	FRAME	車架
8	A- ARM	A臂
9	SWING ARM SUB	後叉
10	FENDER , SEAT	擋泥板,座墊
11	SUSPENSION	避震器
12	FUEL TANK	汽油箱
13	FRONT WHEEL	前輪
14	REAR WHEEL	後輪
15	REAR BRAKE	後煞車系統
16	HANDLE BAR	手把
17	FEND BAR , FOOTREST	防護桿,置腳踏桿
18	REAR WHEEL AXLE	後輪軸
19	CHAIN	鏈條,下防護蓋
20	STEERING	轉向系統
21	BRAKE	煞車系統
22	TOOL BOX ,PACKING CASE,EXTERNAL	工具包,紙箱

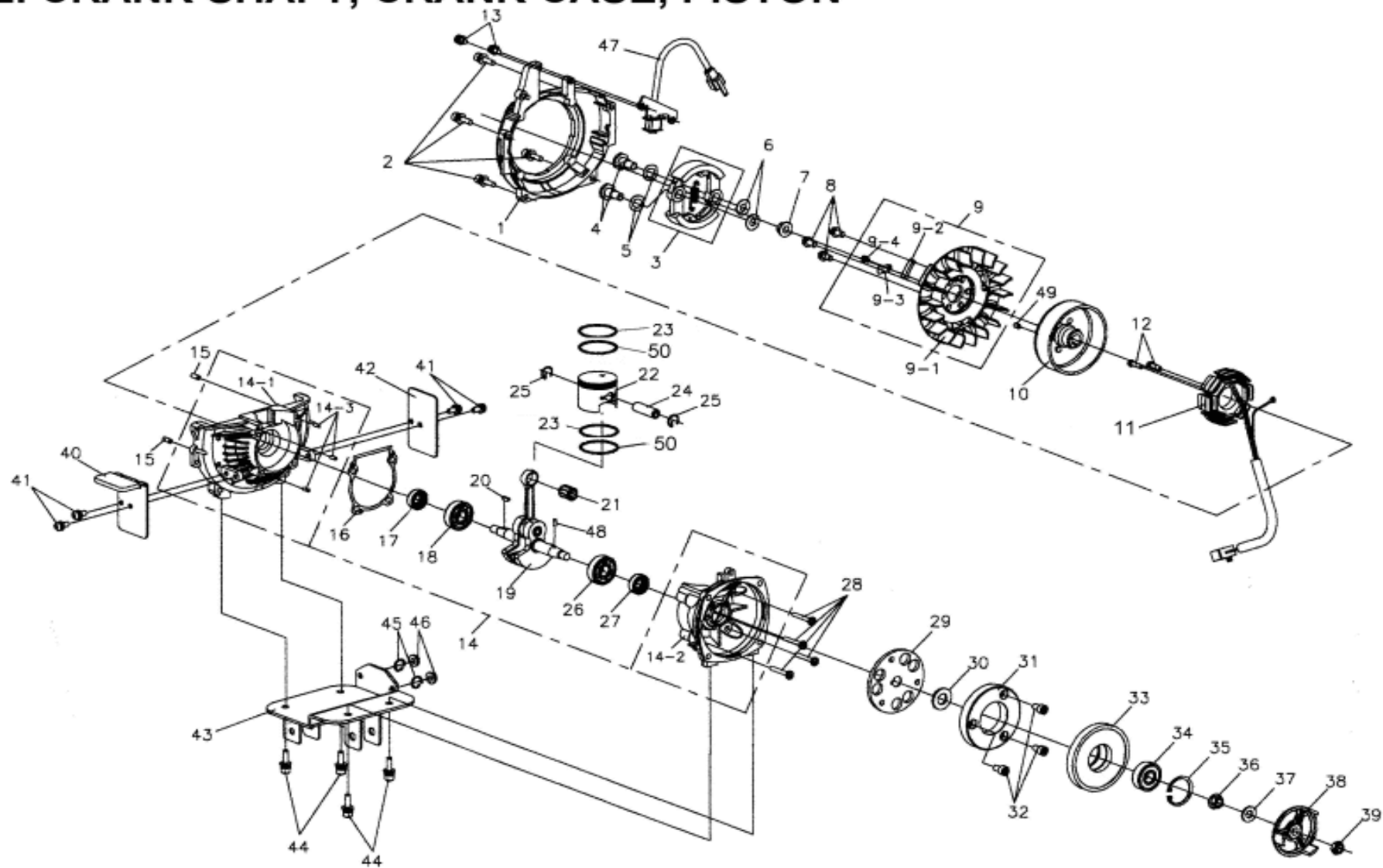
NOTE: *not for sales 表示不售服 N/A表不適用

1. CYLINDER / SHROUD CYLINDER



ITEM	PART NO.	NAME	Q'TY	品名	VIN NO	U.S	A.T	C.A
1		CYLINDER, SHROUD CYLINDER						
1-1	A2100-UE1-0001	CYLINDER COMP.	1	汽缸組				
1-2	I6705-06035-0C	SCREW WASHER	4	NO:004 內六角圓頭螺栓+彈簧墊圈				
1-3	A2191-UE1-0000	GASKET CYLINDER	1	汽缸墊片				
1-4	A6201-UE1-0000	GASKET CARB INSULATOR	1	隔熱板墊片				
1-5	A7111-UE1-0000	INLET PIPE,INSULATOR	1	進氣管隔熱板				
1-6	A6211-UE1-0000	GASKET CARB.	1	化油器墊片				
1-7	A7110-UE1-0002	PIPE INLET	1	化油器接頭				
1-8	A7112-UE1-0000	CARB PLATE	1	化油器固定板				
1-9	I3500-05028-0H	SCREW PAN	2	NO:007 圓頭十字螺絲				
1-10	I8000-UE1-9000	SPARK PLUG(BPM6Y)	1	火星塞				
1-11	I2900-05016-OA	STUD BOLT	2	NO:008 螺樁				
1-12	A8291-UE1-0001	GASKET EXH PIPE	1	排氣管墊片				
1-13	A830A-UE1-9000	EXH PIPE PIPE ASSY	1	排氣管總成				
1-14	I4111-05100	SPRING WASHER	2	NO:001 彈簧墊圈				
1-15	I0309-050G0	NUT,CHECK	2	NO:001 防鬆六角螺帽				
1-16	A9620-UE1-0001	SHROUD,CYLINDER	1	汽缸罩蓋				
1-17	A9625-UE1-0000	SHROUD RUBBER CAP	1	汽缸罩蓋塞頭				
1-18	I3893-05012-0G	SCREW WASHER	2	NO:009 圓頭十字螺絲+平墊圈+波形墊圈				
1-19	I3893-05012-0H	SCREW WASHER	1	NO:007 圓頭十字螺絲+平墊圈+波形墊圈				

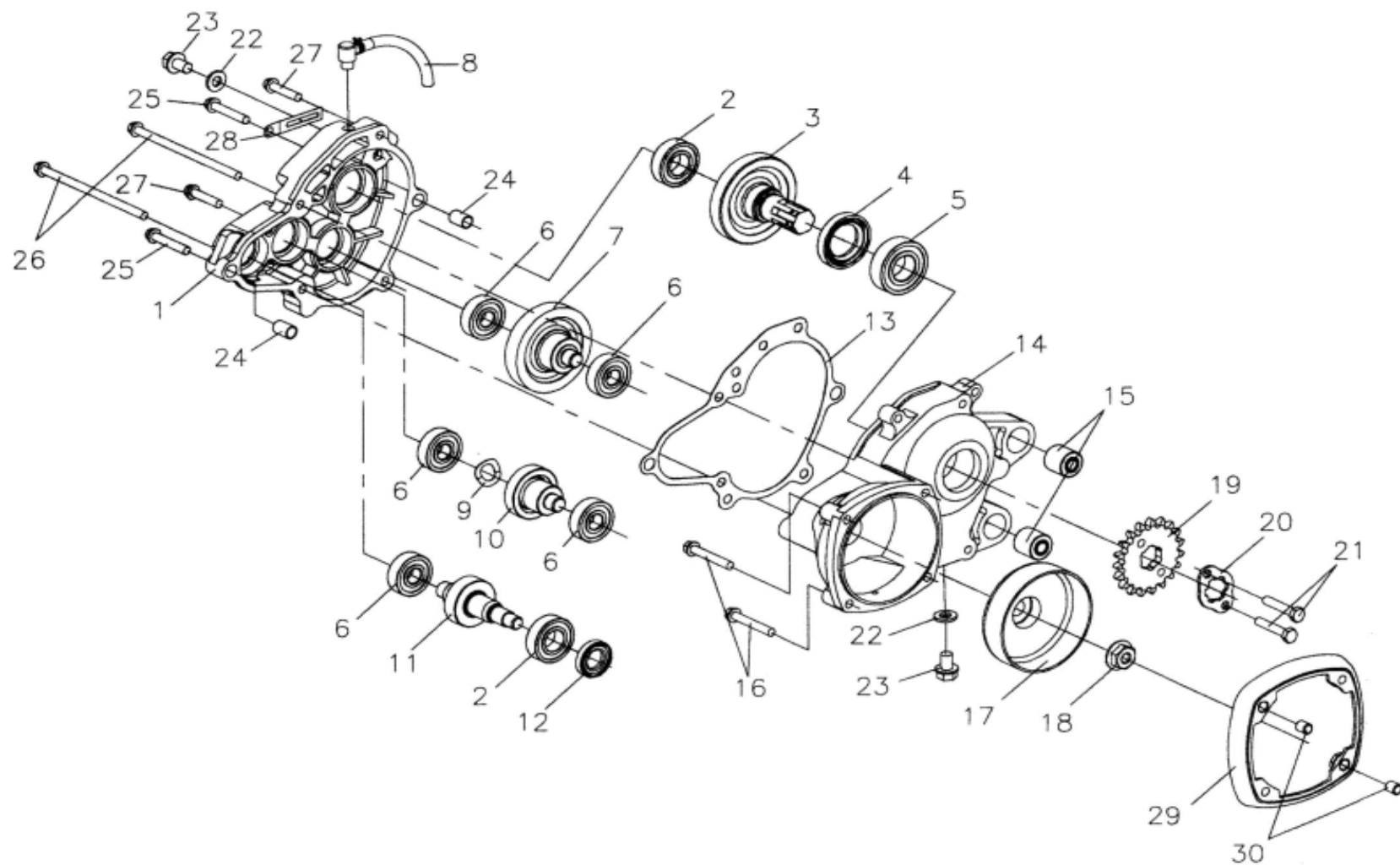
2. CRANK SHAFT, CRANK CASE, PISTON



ITEM	PART NO.	NAME	Q'TY	品名	VIN NO	U.S	A.T	C.A
2		CRANK SHAFT, CRANK CASE, PISTON						
2-1	A1331-UE8-0900	COVER R SIDE	1	右曲軸箱側蓋				
2-2	I6706-05020-0C	SCREW WASHER	4	NO:002 內六角圓頭螺栓+彈簧墊圈+平墊圈				
2-3	B253A-UE1-9000	WEIGHT SET CLUTCH	1	離合器配重組				
2-4	B2402-UE1-0000	BOLT WEIGHT CLUTCH	2	離合器配重螺栓				
2-5	I4121-10G00	WASHER WAVE	2	NO:002 波形墊圈				
2-6	I4104-08010	WASHER	2	NO:029 平墊圈				
2-7	I4050-08075-0H	NUT HEXAGON HEAD	1	NO:002 六角帶頭螺帽				
2-8	I6001-06012-0H	BOLT FLANGE	3	NO:030 六角帶頭螺栓				
2-9	B2102-UE8-9000	FAN COOLING COMP	1	冷卻風扇組				
2-9-1	B2103-UE8-0000	FAN COOLING	1	冷卻風扇				
2-9-2	B2104-UE8-0000	MAGNET	1	磁石				
2-9-3	B2105-UE8-0000	PRESS PLATE	1	壓板				
2-9-4	I3895-04008-0H	SCREW WASHER	1	NO:020 圓頭十字螺絲+彈簧墊圈				
2-10	C1110-UE8-0000	ELYWHEEL COMP	1	飛輪組				
2-11	C1120-UE8-0000	STATOR COMP	1	定子線圈組				
2-12	I3895-04016-0H	SCREW WASHER	2	NO:015 圓頭十字螺絲+彈簧墊圈				
2-13	I3896-05010-0H	SCREW WASHER	2	NO:018 圓頭十字螺絲+彈簧墊圈+平墊圈				
2-14	A1000-UE8-0900	CRANK CASE COMP	1	曲軸箱組				
2-14-1	A1100-UE8-0900	CRANK CASE RIGHT	1	右曲軸箱				
2-14-2	A1200-UE1-0900	CRANK CASE LEFT	1	左曲軸箱				
2-14-3	I4305-32082	SPRING PIN	3	NO:001 彈簧銷				
2-15	I4305-45100	SPRING-PIN	2	NO:002 定位彈簧銷				
2-16	A1192-UE1-0000	GASKET CRANK CASE	1	曲軸箱墊片				
2-17	I1201-UE1-0000	OIL SEAL(12×22×7)	1	油封				
2-18	I6100-62013-10	BEARING, BALL, RADIAL	2	NO:021 滾珠軸承				
2-19	A3000-UE8-0000	CRANKSHAFT COMP.	1	曲柄軸總成				
2-20	I4401-10037	WOODRUFF KEY	1	NO:003 半圓鍵				
2-21	I1100-1014148	BEARING, BALL, RADIAL	1	NO:024 滾珠軸承				
2-22	A3101-UE1-0002	PISTON	1	活塞				
2-23	A3011-B02-0000	RING PISTON SET	1	活塞環組				
2-24	A3111-B02-0000	PIN PISTON	1	活塞銷				

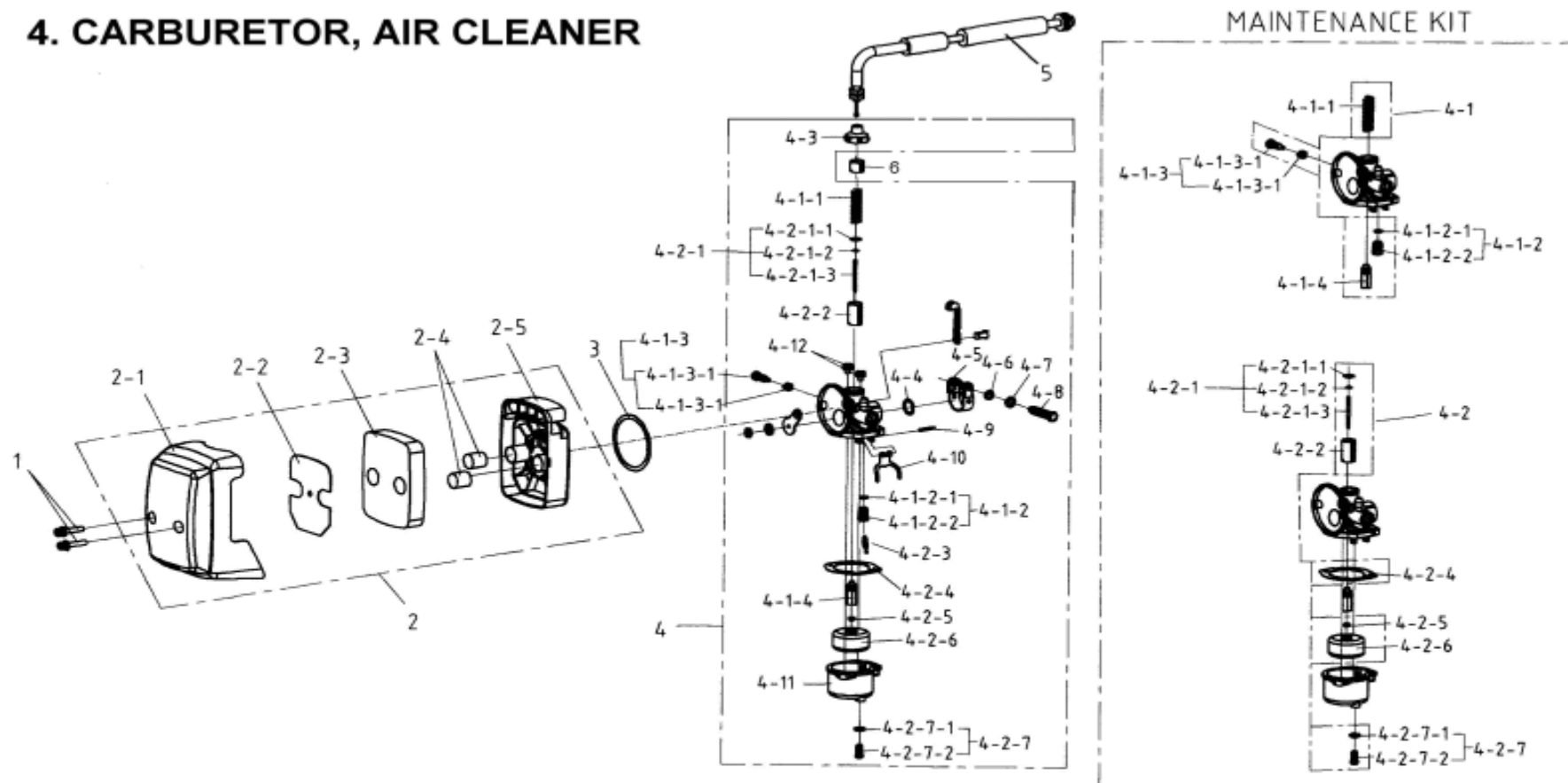
ITEM	PART NO.	NAME	Q'TY	品名	VIN NO	U.S	A.T	C.A
2		CRANK SHAFT, CRANK CASE, PISTON						
2-25	I4601-B02-0000	CLIP, PISTON PIN	2	活塞銷扣環				
2-26	I6100-60020	BEARING,BALL,RADIAL	1	NO:015 滾珠軸承				
2-27	I1207-A00-0000	OIL SEAL(12×22×5)	1	油封				
2-28	I3500-05028-0H	SCREW PAN	4	NO:007 圓頭十字螺絲				
2-29	B8105-UE8-0000	PLATE ONE-WAY	1	單向傳動器固定座				
2-30	I4104-12522	WASHER	1	NO:046 平墊圈				
2-31	B8120-A09-0000	OUTER COMP STARTING CLUTCH	1	單向傳動器組				
2-32	I6600-06010-0A	SOCKET BOLT	3	NO:001 內六角承窩螺栓				
2-33	B8110-UE8-0000	STARTER GEAR	1	起動齒輪				
2-34	I6150-6201	BEARING,BALL,RADIAL	1	NO:045 滾珠軸承				
2-35	I4520-32000	CIRCLIP IN	1	NO:004 C型扣環				
2-36	I4050-08075-0H	NUT FLANGE	1	NO:002 六角帶頭螺帽				
2-37	I4101-08516	WASHER	1	NO:053 平墊圈				
2-38	B8211-UE1-8000	CLUTCH ONEWAY	1	單向起動器				
2-39	I0309-083H0	NUT,CHECK	1	NO:005 防鬆螺帽				
2-40	A1132-UE1-0000	FRONT FENDER	1	前檔泥板				
2-41	I3893-05012-0G	SCREW WASHER	4	NO:009 圓頭十字螺絲+平墊圈+波形墊圈				
2-42	A1131-UE1-0000	FENDER	1	擋泥板				
2-43	E0102-UE1-0000	ENGINE BRACKET	1	引擎底座固定板				
2-44	I6706-06020-0C	SCREW WASHER	4	NO:001 內六角圓頭螺栓+彈簧墊圈+平墊圈				
2-45	I4111-06100	SPRING WASHER	2	NO:002 彈簧墊圈				
2-46	I4050-06060-0H	NUT HEXAGON HEAD	2	NO:003 六角帶頭螺帽				
2-47	C1130-UE8-0000	COMP PULSER	1	脈衝感應線圈組				
2-48	I4301-03780	KNOCK PIN	1	NO:016 定位銷				
2-49	I4303-05060	KNOCK PIN	1	NO:005 定位銷				
2-50	A3122-UE1-0000	INNER RING	2	活塞內環				

3. TRANSMISSION



ITEM	PART NO.	NAME	Q'TY	品名	VIN NO	U.S	A.T	C.A
3		TRANSMISSION		傳動機構				
3-1	B1300-UE1-0902	COVER, GEAR BOX	1	齒輪箱蓋				
3-2	I6100-60030	BEARING, BALL, RADIAL	2	NO:016 滾珠軸承				
3-3	B3430-UE8-0000	FINAL SHAFT COMP.	1	最終軸組				
3-4	I1225-42007	OIL SEAL	1	油封				
3-5	I6150-60040-10	BEARING, BALL, RADIAL	1	NO:019 滾珠軸承				
3-6	I6100-62013-10	BEARING, BALL, RADIAL	1	NO:021 滾珠軸承				
3-7	B3420-UE1-0000	COUNTER GEAR COMP.	1	中間軸組				
3-8	A1220-UE1-0000	BREATHER HOSE COMP.	1	呼吸管組				
3-9	I4121-12J00	WASHER WAVE	1	NO:001 波形墊圈				
3-10	B3440-UE1-0000	IDLE GEAR COMP	1	惰齒輪組				
3-11	B3411-UE1-0000	DRIVE SHAFT	1	驅動軸				
3-12	I1203-B00-0000	OIL SEAL(12×28×5.5)	1	油封				
3-13	B1395-UE1-0000	GASKET,GEAR BOX	1	齒輪箱蓋墊片				
3-14	B1200-UE8-0900	GEAR BOX	1	減速齒輪箱				
3-15	A1203-B00-0000	RUBBER BUSH REAR CUSHION	2	後緩衝器襯套				
3-16	I6001-06038-0C	BOLT HEXAGON HEAD	2	NO:034 六角帶頭螺栓				
3-17	B2101-UE1-0000	CLUTCH OUTER COMP.	1	離合器外殼				
3-18	I4050-10080-0H	NUT HEXAGON HEAD	1	NO:004 六角帶頭螺帽				
3-19	B3801-UE1-0000	SPROCKET	1	傳動鏈輪				
3-20	B3811-A00-0000	PLATE FIXING SPROCET	1	鏈輪固定片				
3-21	I2201-06010-0H	BOLT	2	NO:006 六角螺栓				
3-22	I4102-08020	WASHER	2	NO:042 平墊圈				
3-23	I5801-08012-0H	BOLT FLANGE	2	NO:019 六角帶頭螺栓				
3-24	I4301-10140	KNOCK PIN	2	NO:009 定位銷				
3-25	I6001-06035-0H	BOLT FLANGE	2	NO:013 六角帶頭螺栓				
3-26	I6001-06100-0C	BOLT FLANGE	2	NO:006 六角帶頭螺栓				
3-27	I6001-06028-0H	BOLT FLANGE	2	NO:003 六角帶頭螺栓				
3-28	C2962-UE1-0000	CLAMPER PULSER CORD	1	線夾				
3-29	A9616-UE8-0000	SIDE COVER	1	小蓋				
3-30	I4301-08140	KNOCK PIN	2	NO:008 定位銷				

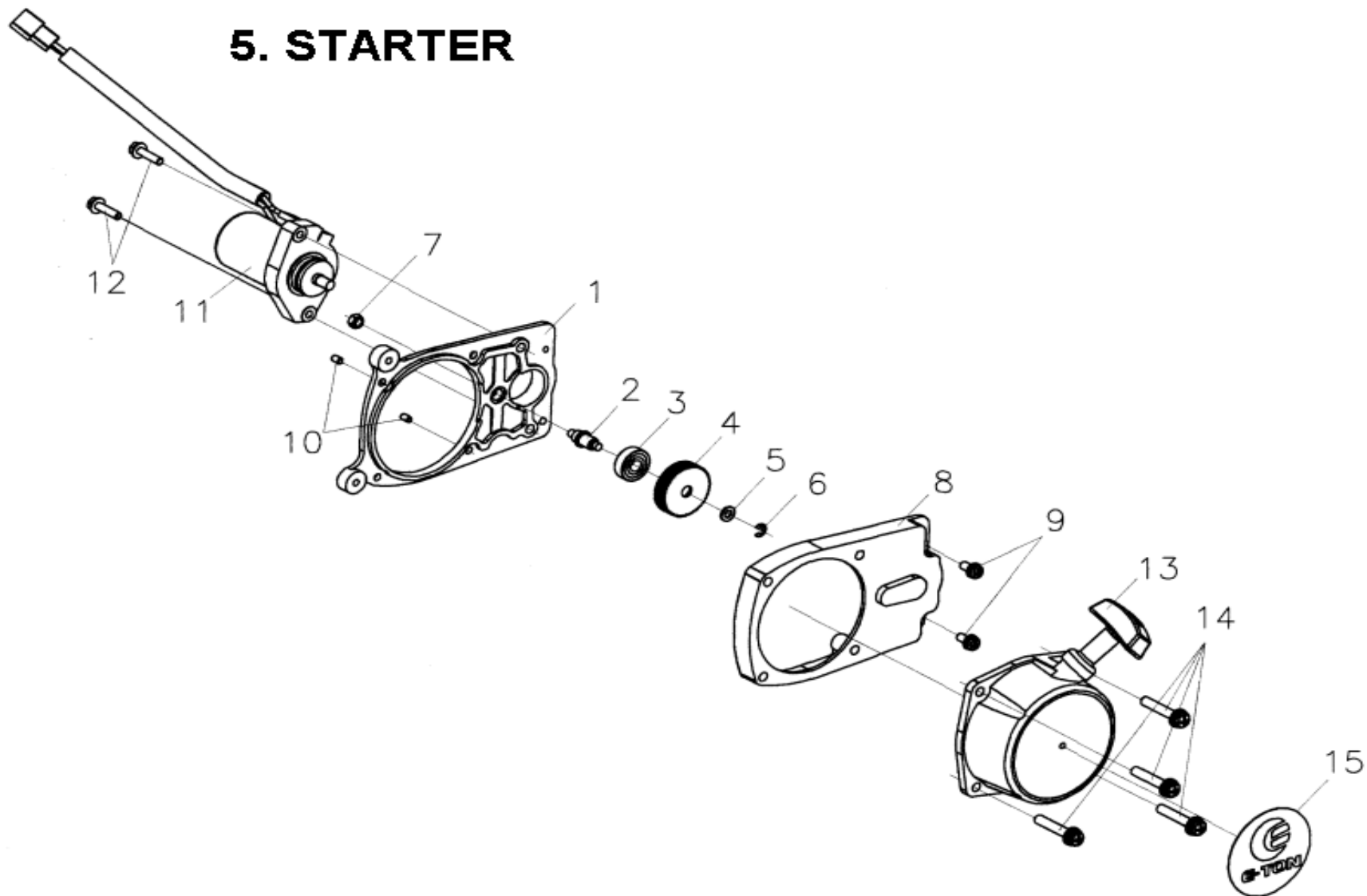
4. CARBURETOR, AIR CLEANER



ITEM	PART NO.	NAME	Q'TY	品名	VIN NO	U.S	A.T	C.A
4		CARBURETOR, AIR CLEANER		化油器,空氣濾淨器				
4-1	I3893-04025-0H	SCREW WASHER	2	NO:010 圓頭十字螺絲+平墊圈				
4-2	A720A-UE1-0002	AIR CLEANER ASSY	1	空氣濾清器總成				
4-2-1	A7231-UE1-0002	COVER AIR/C	1	空氣濾清器蓋				
4-2-2	A7232-UE1-0000	FILTER HOLDER	1	濾棉支撐座				
4-2-3	A7233-UE1-0000	ELEMENT	1	過濾棉				
4-2-4	A7234-UE1-9000	BUSH	2	襯套				
4-2-5	A7230-UE1-0001	CASE AIR/C	1	空氣濾清器箱				
4-3	A7201-UE1-0000	GASKET AIR CLEANER	1	空濾器墊片				
4-4	A610A-UE1-0001	CARBURETOR ASSY	1	化油器總成				
4-4-1	A6100-UE1-A003	MAINTENANCE KIT 3	1	化油器小修包3				
4-4-1-1	KAC40410	THROTTLE VALVE VE SPRING	1	油門彈簧				
4-4-1-2	KBC40710	VALVE SEAT COMP	1	油閥座組				
4-4-1-2-1	KBC40711	O-RING	1	O型環				
4-4-1-2-2	KBC40712	VALVE SEAT	1	油閥座				
4-4-1-3	KAC40920	THROTTLE ADJUSTING ASSY.	1	空氣栓總成				
4-4-1-3-1	KAC40921	THROTTLE ADJUSTING	1	空氣栓				
4-4-1-3-2	KAC40922	THROTTLE ADJUSTING SPRING	1	空氣彈簧				
4-4-1-4	KAC40610	NEEDLE JET(*9.5)	1	噴嘴閥座				
4-4-2	A6100-UE1-A004	MAINTENANCE KIT 4	1	化油器小修包4				
4-4-2-1	KAC40230	JET NEEDLE ASSY.	1	閥針組總成				
4-4-2-1-1	* KAC40310	CLIP(A)	1	C型扣環				
4-4-2-1-2	* KAC40233	CLIP(B)	1	E型扣環				
4-4-2-1-3	* KAC40231	JET NEEDLE(*183)	1	閥針				
4-4-2-2	KAC40110	THROTTLE VALVE	1	活塞				
4-4-2-3	KBC40810	NEEDLE VALVE	1	針閥				

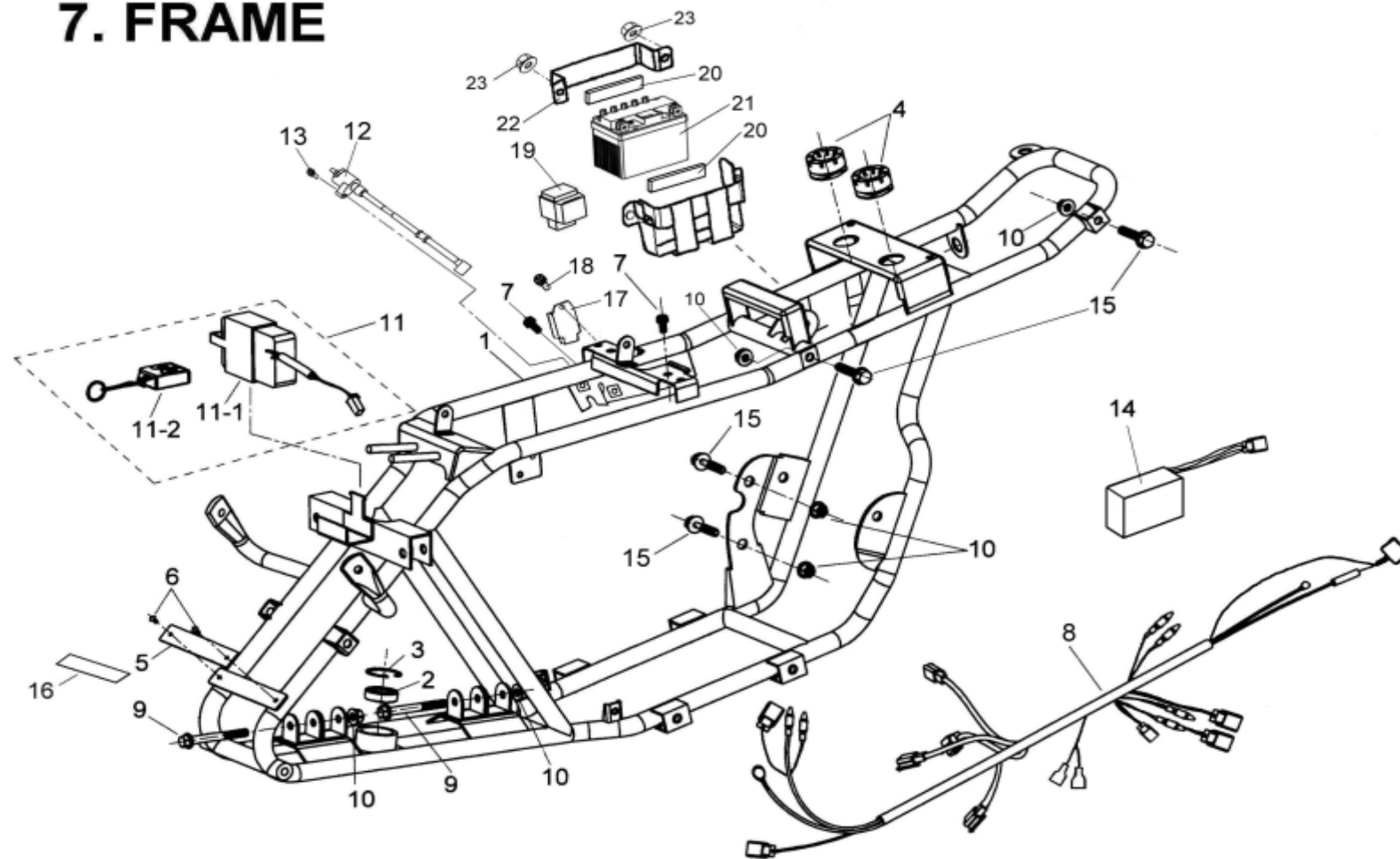
ITEM	PART NO.	NAME	Q'TY	品名	VIN NO	U.S	A.T	C.A
4		CARBURETOR, AIR CLEANER		化油器,空氣濾淨器				
4-4-2-4	KAC41010	CHAMBER PACKING	1	底蓋墊片				
4-4-2-5	KAC40510	MAIN JET(*64)	1	主噴油嘴				
4-4-2-6	KAC41110	FLOAT	1	浮筒				
4-4-2-7	KAC41320	DRAIN SCREW ASSY	1	洩油螺栓總成				
4-4-2-7-1	KAC41322	WASHER	1	墊圈				
4-4-2-7-2	KAC41321	DRAIN SCREW	1	洩油螺栓				
4-4-3	A6102-UE1-0000	CARBURETOR COVER	1	化油器上蓋				
4-4-4	A6103-UE1-0000	WASHER	1	平墊圈				
4-4-5	A6104-UE1-0000	BIND RING	1	束環				
4-4-6	A6105-UE1-0000	WASHER	1	平墊圈				
4-4-7	A6106-UE1-0000	SPRING WASHER	1	彈簧墊圈				
4-4-8	A6107-UE1-0000	BOLT	1	螺栓				
4-4-9	A6109-UE1-0000	FLOAT ARM PIN	1	浮筒臂固定銷				
4-4-10	A6108-UE1-0000	FLOAT ARM	1	浮筒臂				
4-4-11	A6111-UE1-0000	FLOAT ROOM	1	浮筒室				
4-4-12	A6114-UE1-0000	BOLT	2	螺栓				
4-5	A7910-UE1-0001	CABLE ASSY THROT	1	加油導線總成				
4-6	A6101-4HA0-0000	CARBURATOR BUSH	1	化油器襯套		N/A		N/A

5. STARTER



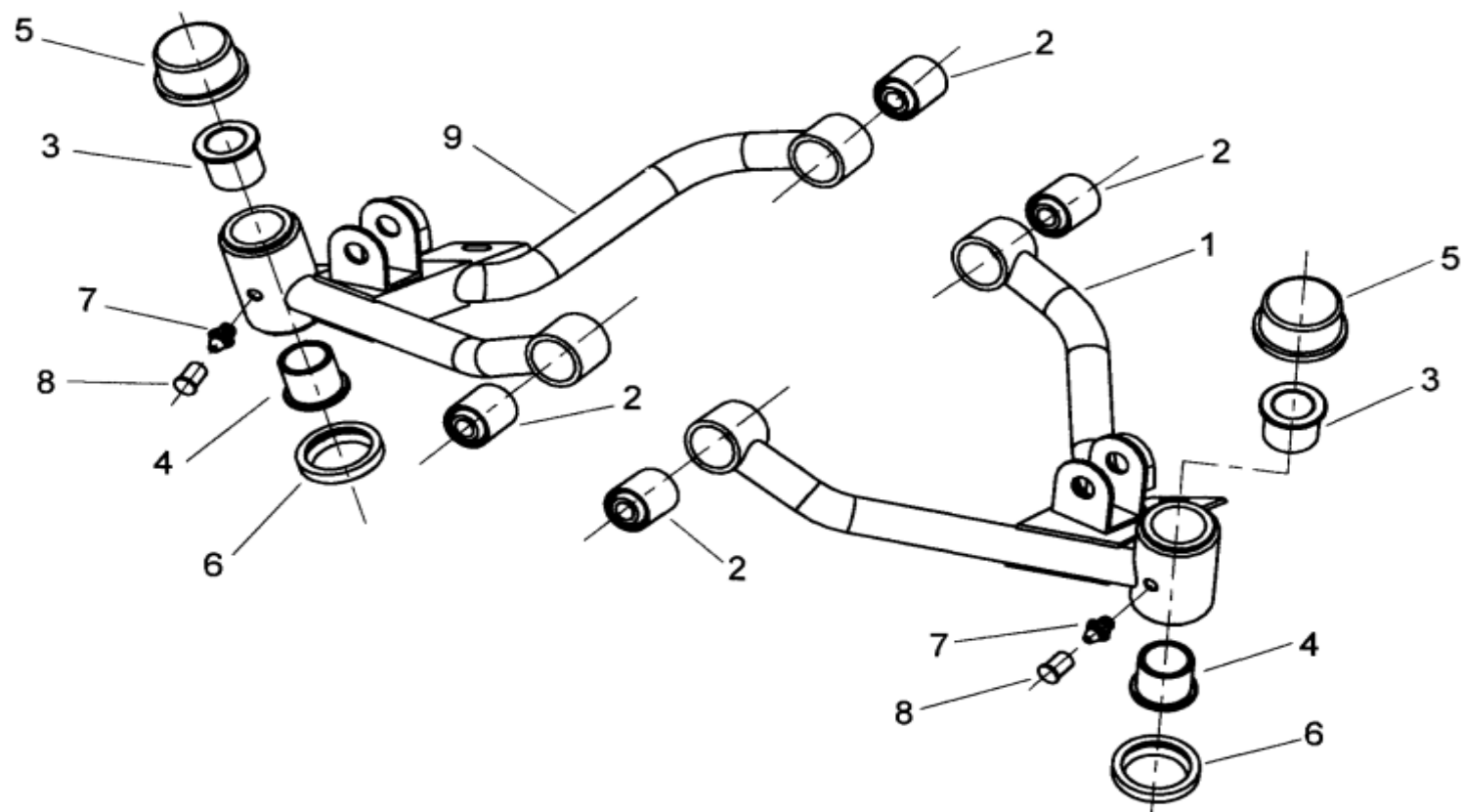
ITEM	PART NO.	NAME	Q'TY	品名	VIN NO	U.S	A.T	C.A
5		STARTER		起動裝置				
5-1	B8106-UE8-0000	START PLATE	1	電起動固定板				
5-2	B8102-UE8-0000	SHAFT OF REDUCTION GEAR	1	電起動減速齒輪軸				
5-3	I6130-608	BEARING, BALL, RADIAL	1	NO:039 滾珠軸承				
5-4	B8100-UE8-0000	REDUCTION GEAR STARTER	1	起動減速齒輪				
5-5	I4101-05210	WASHER	1	NO:056 平墊圈				
5-6	I4540-0401A	CIRCLIP	1	NO:009 E 型扣環				
5-7	I4050-05055-0A	NUT FLANGE	1	NO:001 六角帶頭螺帽				
5-8	B8107-UE8-0000	START COVER	1	電起動防塵蓋				
5-9	I3893-05012-0G	SCREW WASHER	2	NO:009 圓頭十字螺絲+平墊圈+波形墊圈				
5-10	I4303-04065	KNOCK PIN	2	NO:006 定位銷				
5-11	C1200-UE8-0000	STARTER MOTOR ASSY	1	起動馬達總成				
5-12	I6001-06020-0H	BOLT FLANGE	2	NO:001 六角帶頭螺栓				
5-13	A134A-UE1-8001	COVER ASSY L SIDE	1	左曲軸箱側蓋總成				
5-14	I3893-06035-0H	SCREW WASHER	4	NO:016 圓頭十字螺絲+彈簧墊圈+平墊圈				
5-15	A1350-UE1-0000	LABEL RECOIL	1	貼紙				

7. FRAME



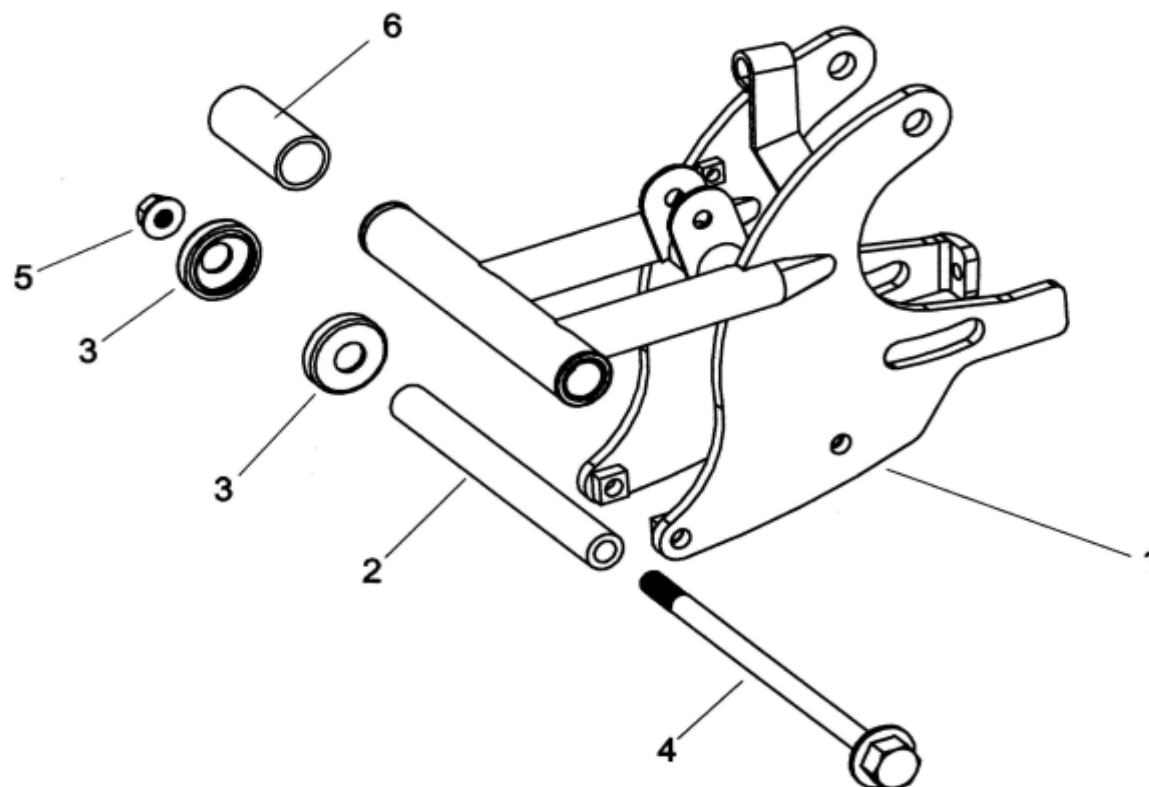
ITEM	PART NO.	NAME	Q'TY	品名	VIN NO	U.S	A.T	C.A
7		FRAME						
7-1	E0100-4HC0-0000	FRAME COMP.	1	車架總成				
7-2	I6100-6002ZZ	BEARING (6002ZZ)	1	軸承				
7-3	I4510-32000	C CLIP	1	C型扣環				
7-4	G7212-5EA0-0000	RUBBER DAMPER(ψ37×ψ13×23)	2	橡膠塊				
7-5	E0101-4HA0-0000	FRAME NUMBER PLATE(120×20×1.5)	1	車架號碼牌				N/A
	E0101-4HB4-0000	FRAME NUMBER PLATE(120×20×1.5)	1	車架號碼牌		N/A	N/A	
7-6	H750A-5BA1-0000	FIX NAIL (ψ3.5 ×9)	2	拉釘				
7-7	I8557-06012	SCREW WITH WASHER (M6×12)	2	盤頭螺絲附彈簧墊圈				
7-8	C2100-4HC0-0000	MAIN WIRE ASSY.	1	主配線				
7-9	I2502-08070-0B	BOLT,FLANGE(M8×70)	2	凸緣螺栓				
7-10	I5611-08200	NUT,FLANGE CHECK(M8)	6	凸緣防鬆螺帽				
7-11	C2105-9EF0-0000	ROMOTE CONTROL SAFETY SWITCH ASSY.	1	遙控安全開關總成				
7-11-1	C2106-9EF0-0000	RECEIVE(BLACK)	1	接收器(黑色)				
7-11-2	C2107-9EF0-0000	ROMOTE CONTROL(433MHZ)(YELLOW)	1	遙控器(黃色)				
7-12	C0510-UE8-0000	IGNITION COIL COMP	1	高壓線圈				
7-13	I3401-05020-07	BOLT WASH(M5×20)	1	盤頭螺絲附墊圈				
7-14	C0410-UE8-0000	CDI NUIT UNDER 6700rpm	1	電子點火器				
7-15	I0105-08040	BOLT,FLANGE (M8×40)	4	凸緣螺栓				
7-16	F4309-5EA0-0000	STICKER, MFD.	1	廠商貼紙				
7-17	C1600-UE8-0000	REGULAR	1	穩壓整流器				
7-18	I8556-06016	SCREW,PAD NEAD(M6×16)	1	圓頭十字螺絲附墊圈				
7-19	C5850-B00-0000	STARTER RELAY ASSY	1	起動繼電器				
7-20	E0104-5EA0-0000	BATTERY PAD(6×19×100)	2	電瓶海棉條				
7-21	C1500-5EA0-0000	BATTERY(GTX4L-BS)	1	電瓶				
7-22	E0103-5EA0-0000	BATTERY	1	蓄電池蓋				
7-23	I5611-06200-OG	NUT,SELF LOCK	2	自鎖螺帽				

8.A- ARM



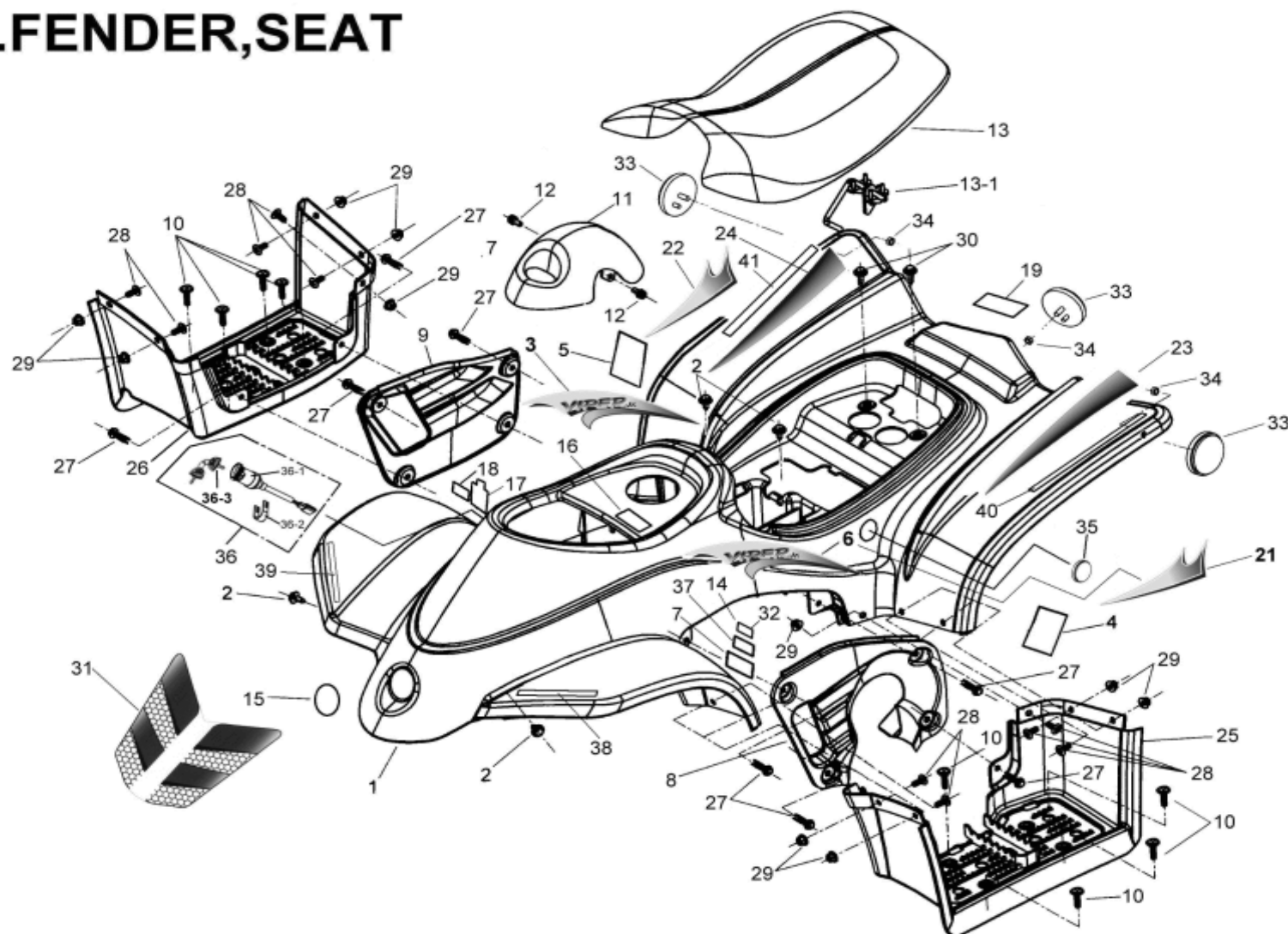
ITEM	PART NO.	NAME	Q'TY	品名	VIN NO	U.S	A.T	C.A
8		SWING ARM		A臂				
8-1	E0200-4HA0-0000	ARM, SUSPENSION, L.H.	1	左A臂總成				
8-2	E0201-4HA0-0000	BUSH (ψ20×ψ8.1×21×24)	4	襯套				
8-3	E0207-5EA0-0000	OIL LINER(ψ15.5)	2	含油襯套				
8-4	E0206-5EA0-0000	OIL LINER(ψ17)	2	含油襯套				
8-5	E0202-5EA0-0000	WATERPROOF COVER	2	防水套				
8-6	E0203-5EA0-0000	DUST SEAT	2	防塵橡膠				
8-7	I6600-06000	GREASE VALVE(1/4")	2	黃油嘴				
8-8	E0209-5EA0-9000	CAP, GREASE VALVE	2	黃油嘴蓋				
8-9	E0210-4HA0-0000	ARM, SUSPENSION, R.H.	1	右A臂總成				

9.SWINGARM



ITEM	PART NO.	NAME	Q'TY	品名	VIN NO	U.S	A.T	C.A
9		SWING ARM SUB		後叉				
9-1	E220A-4HB0-0000	SWING ARM SUB ASSY.	1	後叉總成				
9-2	E2209-4HA0-0000	SWING ARM SPACER(ψ17 ×ψ10×158.5)	1	後叉隔筒				
9-3	E2205-4HA0-0000	SWING ARM SEAL COVER (25.4)	2	後叉封蓋				
9-4	E2201-4HA0-0000	SWING ARM SET BOLT (M10×186)	1	後叉裝置螺栓				
9-5	I5612-10200	NUT,FLANGE CHECK(M10)	1	凸緣防鬆螺帽				
9-6	E2202-4HA0-0000	RUBBER SLEEVE	1	橡膠軸套				

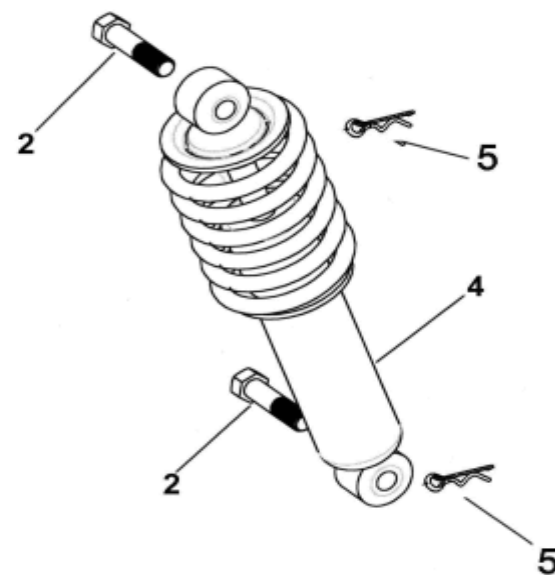
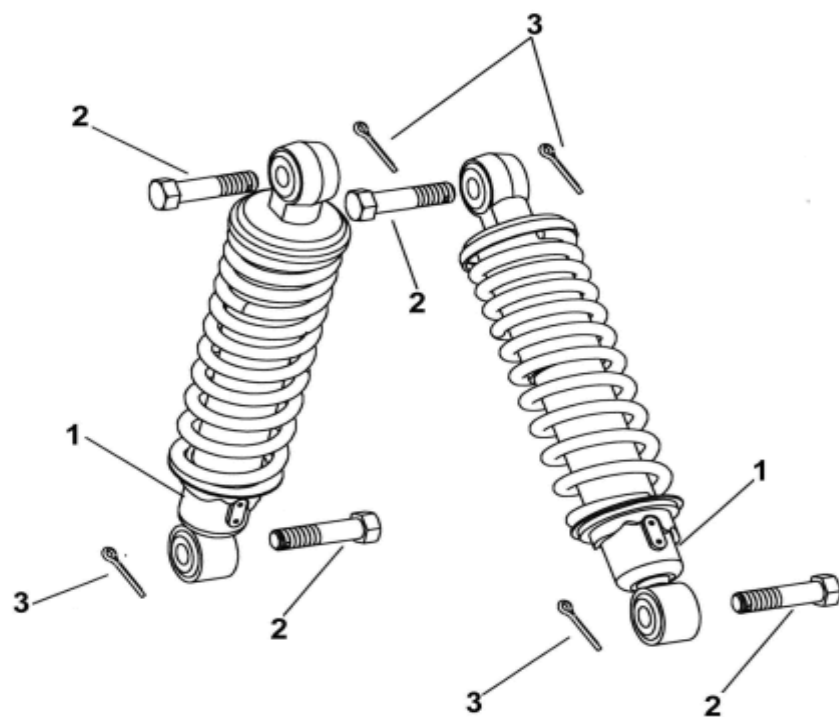
10.FENDER,SEAT



ITEM	PART NO.	NAME	Q'TY	品名	VIN NO	U.S	A.T	C.A
10		FENDER, SEAT						
10-1	F4300-4HB0-4200	FENDER(RED)	1	擋泥板(紅色)				
	F4300-4HB0-5400	FENDER(BLUE)	1	擋泥板(藍色)				
10-2	I0119-06802	BOLT,HEXAGON HEAD(M6×16)	4	六角套頭螺栓				
10-3	H7104-4HB0-9000	STICKER, VIPER jr(R)	1	VIPER jr車型貼紙(右)				
10-4	H7101-4HA0-9000	STICKER, WARNING(PASSENGER)	1	警告貼紙				
10-5	H7102-4HA0-9000	STICKER, WARNING (Y6)	1	警告貼紙				
10-6	H7103-4HB0-9000	STICKER, VIPER jr(L)	1	VIPER jr車型貼紙(左)				
10-7	H7133-9EF0-0000	STICKER,SAFETY ROMOTE CONTROLLER	1	遙控器警告貼紙				
10-8	F4500-4HC0-0000	FENDER SIDE COVER(L)	1	擋泥板側蓋(左)				
10-9	F4400-4HB0-0000	FENDER SIDE COVER(R)	1	擋泥板側蓋(右)				
10-10	I8310-06020-01	BUTTON HEAD SCREW	8	扁圓頭螺絲				
10-11	E3205-4HA0-4200	COVER, HANDLE BAR(RED)	1	手把蓋(紅色)				
	E3205-4HA0-5400	COVER, HANDLE BAR(BLUE)	1	手把蓋(藍色)				
10-12	I8556-06016	SCREW WITH WASHER(M6×16)	2	盤頭螺絲附墊圈				
10-13	G7200-4HB0-0000	SEAT ASSY.	1	座墊總成				
10-13-1	G7201-4HB0-0000	SEAT FIXER ASSY	1	座墊扣總成				
10-14		CANCEL,PREARRANGE		取消,保留				
10-15	H7107-5EB0-0000	EMBLEM, E-TON LOGO(SILVER)	1	商標銘牌(銀色)				
10-16	H7105-4HA0-9000	STICKER,WARNING,OILPREMIX	1	預混機油警告貼紙				
10-17	H7101-4HA1-0000	STICKER,WARNING,CE	1	CE警告貼紙		N/A		N/A

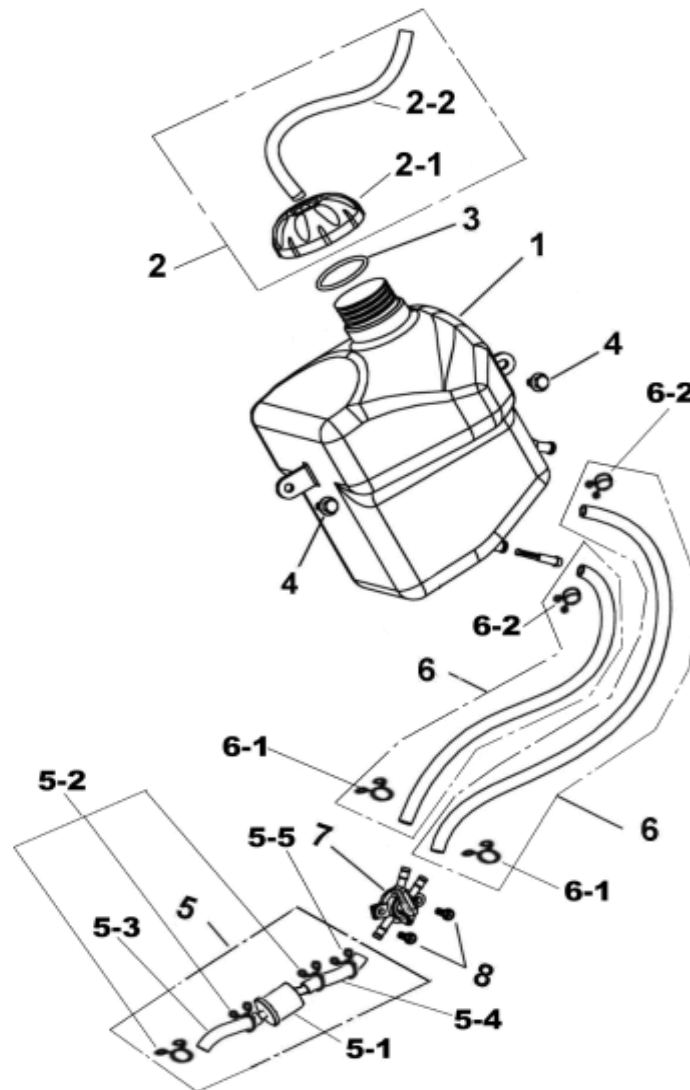
ITEM	PART NO.	NAME	Q'TY	品名	VIN NO	U.S	A.T	C.A
10		FENDER, SEAT						
10-18	H7102-5EA1-0000	STICKER,CE	1	CE貼紙		N/A		N/A
10-19	H7108-4HA0-0000	STICKER,WARNINGSTARTING	1	起動警告貼紙		N/A		N/A
10-20		CANCEL,PREARRANGE		取消,保留				
10-21	H7128-4HB0-9000	STICKER,REAR FENDER(L)	1	後車身貼紙(左)				
10-22	H7129-4HB0-9000	STICKER,REAR FENDER(R)	1	後車身貼紙(右)				
10-23	H7126-4HB0-9000	STICKER,REAR FRAME COVER(L)	1	後車身蓋貼紙(左)				
10-24	H7127-4HB0-9000	STICKER,REAR FRAME COVER(R)	1	後車身蓋貼紙(右)				
10-25	H3520-4HC0-0000	FOOTREST (L)	1	置腳踏板(左)				
10-26	H3620-4HB0-0000	FOOTREST (R)	1	置腳踏板(右)				
10-27	I8310-FIA0-0000	PLASTICS SCREW	8	塑膠螺絲				
10-28	E0117-9EA0-0000	BUTTON HEAD SCREW(M6×18)	10	扁圓頭螺絲				
10-29	I5611-06200-0G	NUT,SELF LOCK	10	自鎖螺帽				
10-30	I0119-06821	BOLT,HEXAGON HEAD(M6×20)	2	六角套頭螺栓				
10-31	H7121-4HB0-9000	STICKER,FRONT FENDER	1	前端貼紙				
10-32	H7142-5EE0-0000	WARNING STICKER,VEHICLE SUIT	1	車輛適用警告貼紙		N/A	N/A	
10-33	C3743-5BA2-0000	CIRCLE REFLECTOR,RDE(DOT)	3	圓形反光片-紅色(DOT)		N/A	N/A	
10-34	I2020-60000	NUT, HEXAGON	3	六角螺帽		N/A	N/A	
10-35	A1105-B00-0000	CAP RUBBER R	1	右橡膠套				
10-36	C501A-4HC0-0000	MAIN SWITCH ASSY	1	主開關總成				
10-36-1	* C5010-9FA0-0000	MAIN SWITCH	1	主開關				
10-36-2	* C5012-FIC0-0000	FIX PLATE	1	固定片				
10-36-3	C5013-9FA0-0000	MATERIAL KEK	1	鑰匙(素材)				
10-37	H7105-4HB0-0000	STICKER,MAXIMUN SPEED	1	限速警告貼紙				
10-38	H7131-4HC0-9000	STICKER,ELECTRICAL START(L)	1	電起動貼紙(左)				
10-39	H7132-4HC0-9000	STICKER,ELECTRICAL START(R)	1	電起動貼紙(右)				
10-40	H7134-4HC0-0000	STICKER,REMOTE CONTROL SYSTEM(L)	1	遙控系統貼紙(左)				
10-41	H7135-4HC0-0000	STICKER,REMOTE CONTROL SYSTEM(R)	1	遙控系統貼紙(右)				

11. SUSPENSION



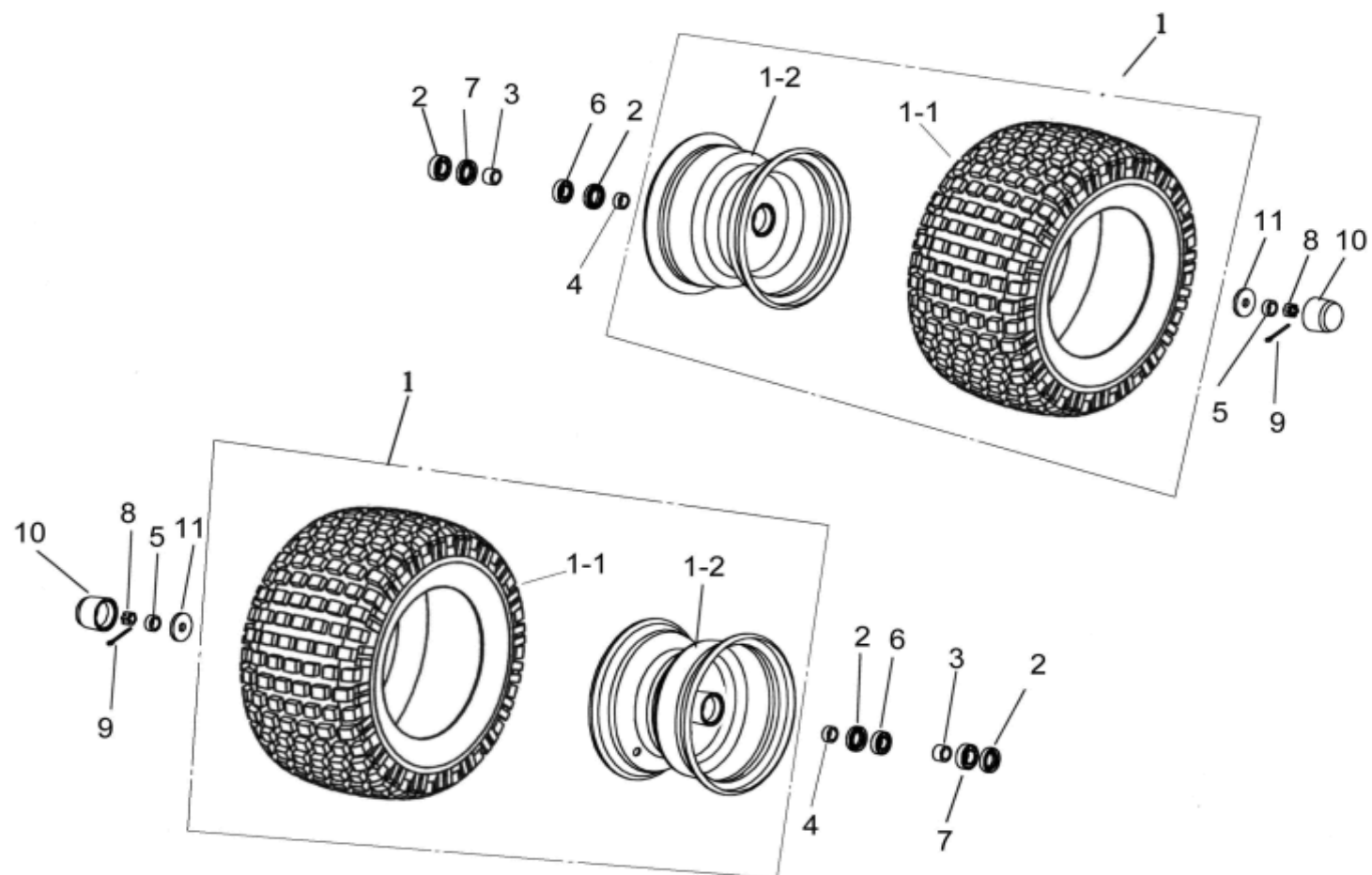
ITEM	PART NO.	NAME	Q'TY	品名	VIN NO	U.S	A.T	C.A
11		SUSPENSION		避震器				
11-1	E1105-4HA0-9000	SUSPENSION FRONT	2	前避震器				
11-2	I0102-10040	BOLT, PIN HOLE(M10×40)	6	銷孔螺栓				
11-3	I9900-25019	COTTER PIN (3/32"×3/4")	4	開口銷				
11-4	E2400-4HA0-0000	SHOCK ABSORBER ASSY. REAR	1	後避震器				
11-5	I0468-12006	COTTER PIN	2	B型銷				

12.FUEL TANK



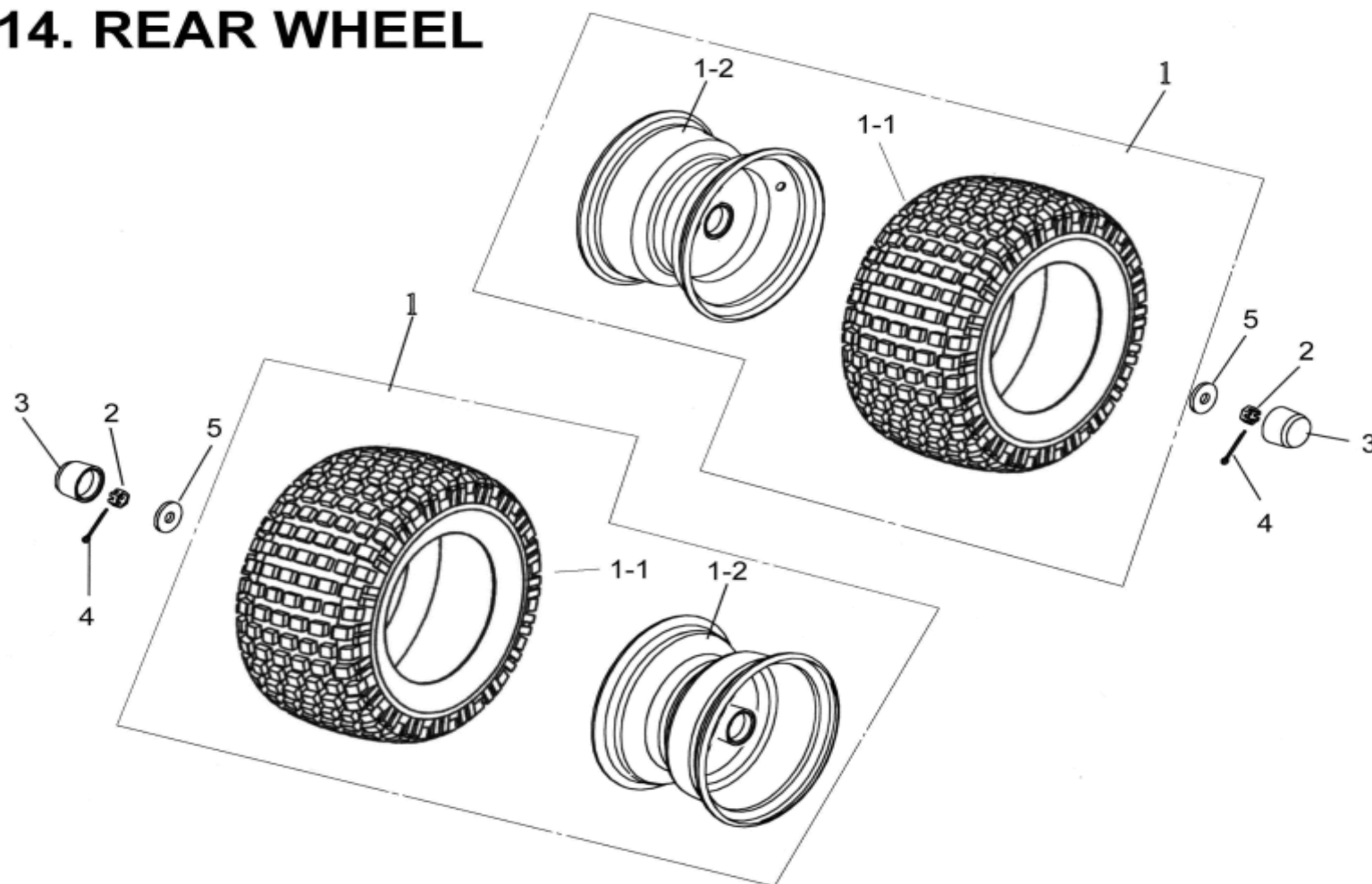
ITEM	PART NO.	NAME	Q'TY	品名	VIN NO	U.S	A.T	C.A
12		FUEL TANK		汽油箱				
12-1	A7500-4HA0-0000	FUEL TANK ASSY.	1	汽油箱總成				
12-2	A762A-5EA0-0000	FUEL TANK CAP ASSY	1	汽油箱蓋總成				
12-2-1	A7620-5EA0-0000	FUEL TANK CAP	1	汽油箱蓋				
12-2-2	A7621-9FA0-0000	BREATHE TUBE	1	油箱呼吸管				
12-3	A7622-5EA0-0000	RUBBER PAD	1	汽油箱蓋墊片				
12-4	I0119-06821	BOLT,HEXAGON HEAD(M6×20)	2	六角套頭螺栓				
12-5	A751A-4HA0-1000	FUEL FILTER ASSY.	1	汽油濾清器總成				
12-5-1	A7519-FIA0-1000	FILTER COMP FUEL	1	汽油濾清器				
12-5-2	A7516-5EA0-0000	CLIP(A)	3	汽油管止夾(A)				
12-5-3	A7514-4HA0-0000	FUEL TUBE (A)	1	汽油濾清器油管A				
12-5-4	A7515-4HA0-0000	FUEL TUBE (B)	1	汽油濾清器油管B				
12-5-5	A7516-4HA0-0000	CLIP(C)	1	汽油管止夾C				
12-6	A7501-4HA0-0000	MAIN/SPARE FUEL TUBE	2	汽油管				
12-6-1	A7516-5EA0-0000	CLIP(A)	2	汽油管止夾(A)				
12-6-2	A7517-5EA0-0000	CLIP(B)	2	汽油管止夾(B)				
12-7	A7520-5EA0-0000	MANUAL FUEL CUP	1	油開關組總成				
12-8	I8506-05016	SCREW,PAN HEAD(M5×16)	2	盤頭螺絲				

13. FRONT WHEEL



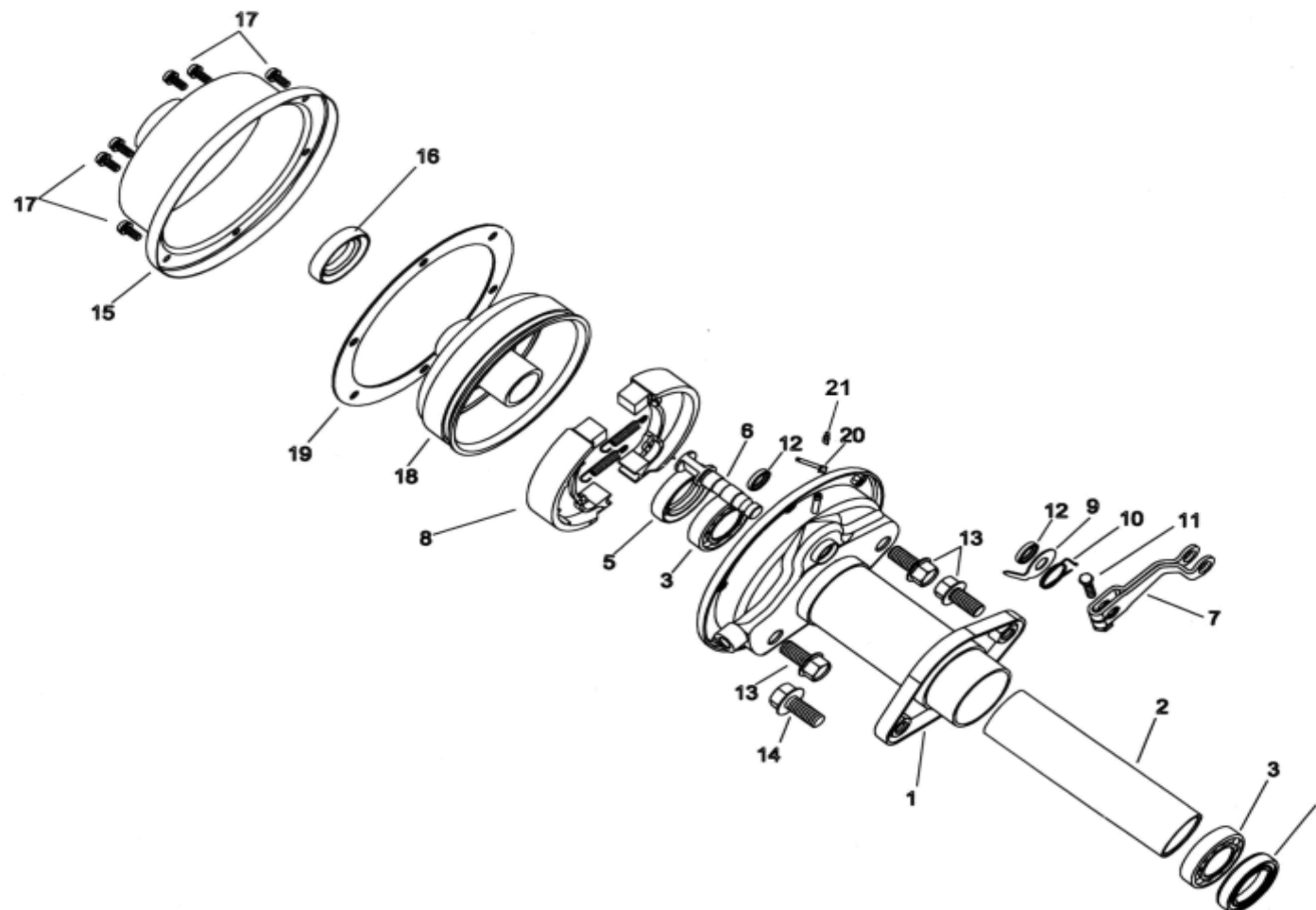
ITEM	PART NO.	NAME	Q'TY	品名	VIN NO	U.S	A.T	C.A
13		FRONT WHEEL						
13-1	D471A-4HA0-0000	FRONT TIRE ASSY	2	前輪總成				
13-1-1	D4710-4HA0-0000	WHEEL TIRE(145×70-6)	2	輪胎				
13-1-2	D4601-4HA0-0000	WHEEL RIM	2	前輪圈				
13-2	I3102-5AC0-0000	OIL SEAL(ψ22×ψ35×7)	4	油封				
13-3	D4620-5EA0-0000	INNER SPACER(ψ15×ψ21.7×15)	2	內定距套				
13-4	D4621-5EA0-0000	OUTER SPACER(1)(ψ15×ψ21.7×10)	2	外定距套1				
13-5	D4622-4HA0-0000	OUTER SPACER(2)(ψ17×ψ21.7×17)	2	外定距套2				
13-6	I6100-6002LLU	BEARING(6002LLU)	2	軸承				
13-7	I6100-6003LLU	BEARING(6003LLU)	2	軸承				
13-8	I5500-12000	NUT,CASTLE(M12)	2	城堡螺帽				
13-9	I4201-46325	COTTER PIN	2	開口銷				
13-10	D4609-5EA0-0000	RUBBER CAP	2	橡膠套				
13-11	D4608-5EA0-0000	FRONT WHEEL SHAFT WASHER (ψ40×ψ12×4.5t)	2	前輪軸墊片				

14. REAR WHEEL



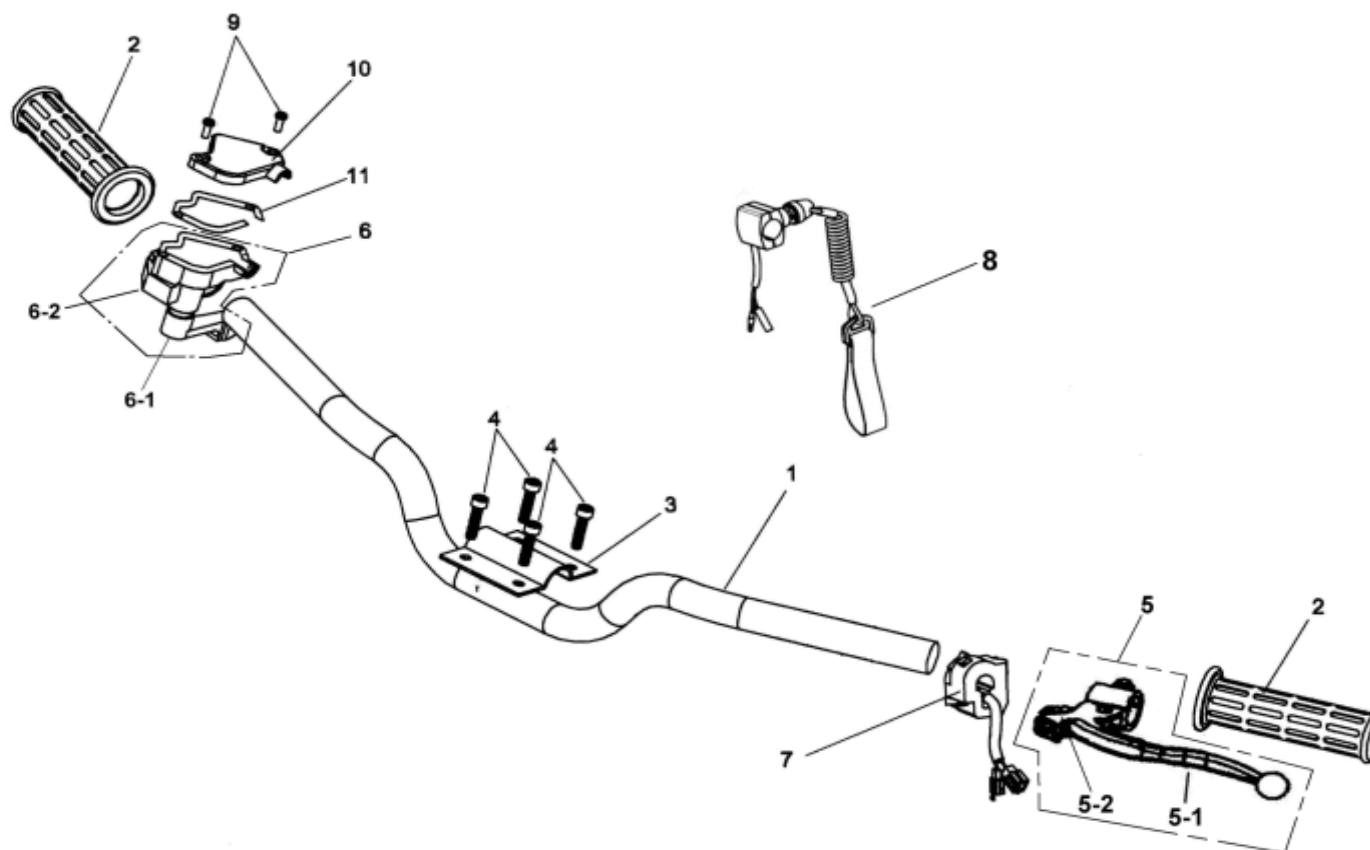
ITEM	PART NO.	NAME	Q'TY	品名	VIN NO	U.S	A.T	C.A
14		REAR WHEEL						
14-1	D471B-4HA0-0000	REAR TIRE ASSY	2	後輪總成				
14-1-1	D4710-4HA0-0000	WHEEL TIRE(145×7-6)	2	輪胎				
14-1-2	D4602-4HA0-0000	WHEEL RIM	2	後輪圈				
14-2	I5500-14100	NUT(M14)	2	城堡螺帽				
14-3	D4609-5EA0-0000	RUBBER CAP	2	橡膠套				
14-4	I4201-46325	COTTER PIN	2	開口銷				
14-5	D2309-5EA0-0000	REAR WHEEL SHAFT WASHER (ψ40×ψ14×4.5t)	2	後輪軸墊片				

15. REAR BRAKE



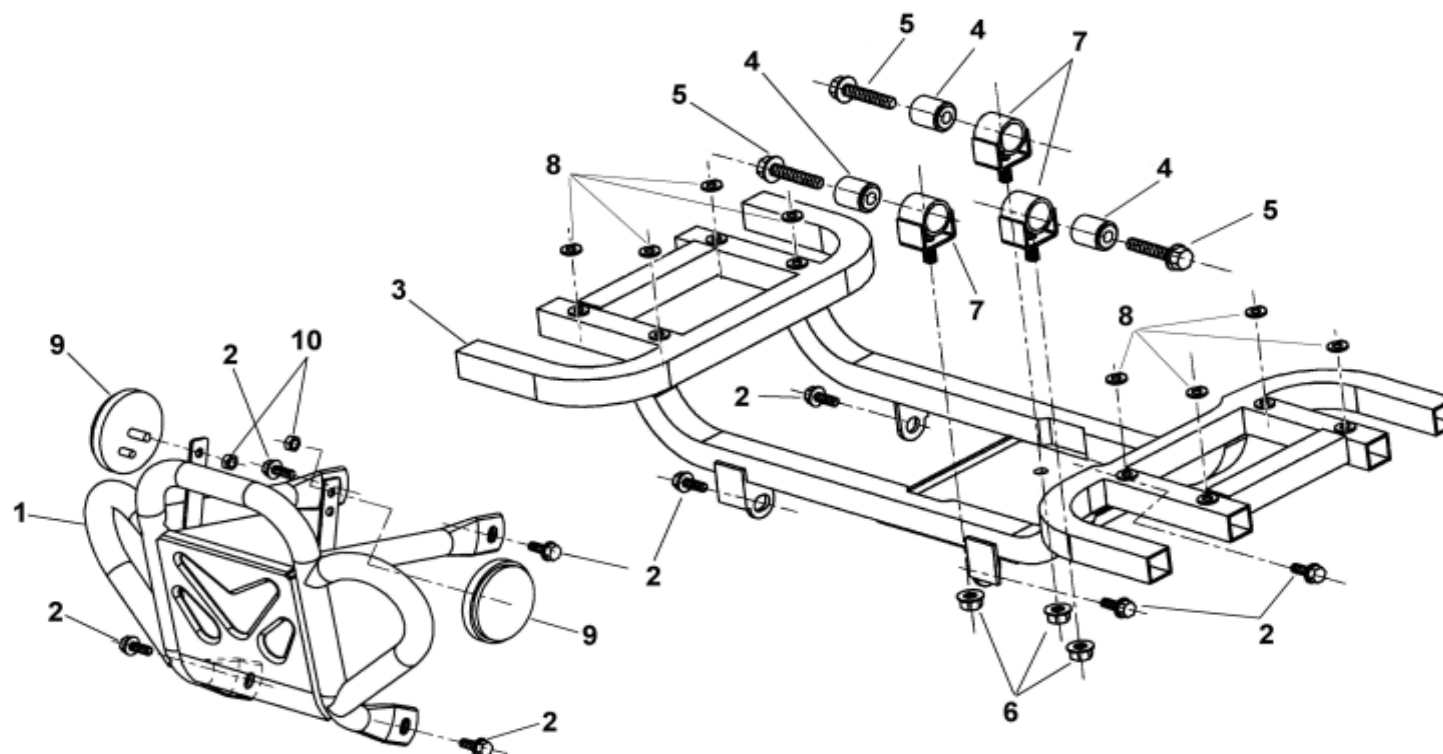
ITEM	PART NO.	NAME	Q'TY	品名	VIN NO	U.S	A.T	C.A
15		REAR BRAKE						
15-1	D2310-4HA0-0000	REAR WHEEL BEARING SEAT ASSY.	1	後輪軸軸承座總成				
15-2	D2311-4HA0-0000	SPACER(31×36×63.7)	1	隔筒				
15-3	I6100-6006ZZ	BEARING(6006ZZ)	2	軸承				
15-4	D2313-9EA0-0000	OIL SEAL(ψ42×ψ55×8)	1	油封				
15-5	D2315-9EA0-0000	OIL SEAL(ψ38×ψ55×10)	1	油封				
15-6	D3141-5EA0-0000	BRAKE ARM CAM, REAR	1	後搖臂凸輪				
15-7	D3410-4HA0-0000	BRAKE ARM, REAR	1	後煞車搖臂				
15-8	D3120-5EA0-0000	REAR BRAKE SHOE COMP.(ψ130)	1	後煞車蹄片組				
15-9	D3145-5EA0-0000	REAR BRAKE INDICATOR	1	後煞車指示器				
15-10	D3419-5EA0-0000	REAR RETURN SPRING	1	後復歸彈簧				
15-11	I0020-06030	BOLT(M6×30)	1	螺栓				
15-12	D2314-5EA0-0000	OIL SEAL(ψ14×ψ20×4)	2	油封				
15-13	I0141-12020-01	SCREW, FLANGE (M12×20)	3	凸緣螺絲(鋼質)				
15-14	I0141-12025-01	SCREW ,FLANGE (M12×25)	1	凸緣螺絲(鋼質)				
15-15	D3615-9EA0-0000	DRUM COVER, REAR	1	後煞車鼓蓋				
15-16	D3616-9EA0-0000	OIL SEAL(ψ38×ψ52×9)	1	油封				
15-17	I8557-06012	SCREW, WITH WASHER(M6×12)	6	盤頭螺絲附彈簧墊圈				
15-18	D3610-9EA0-1000	REAR DRUM	1	後剎車鼓				
15-19	D3611-5EA0-0000	GASKET, REAR DRUM COVER	1	後煞車鼓蓋墊片				
15-20	D2316-5EA0-0000	DRAIN PIPE ASSY.	1	排水管總成				
15-21	D2319-5EA0-0000	PLUG, PURGE HOLE	1	吹氣孔塞				

16.HANDLE BAR



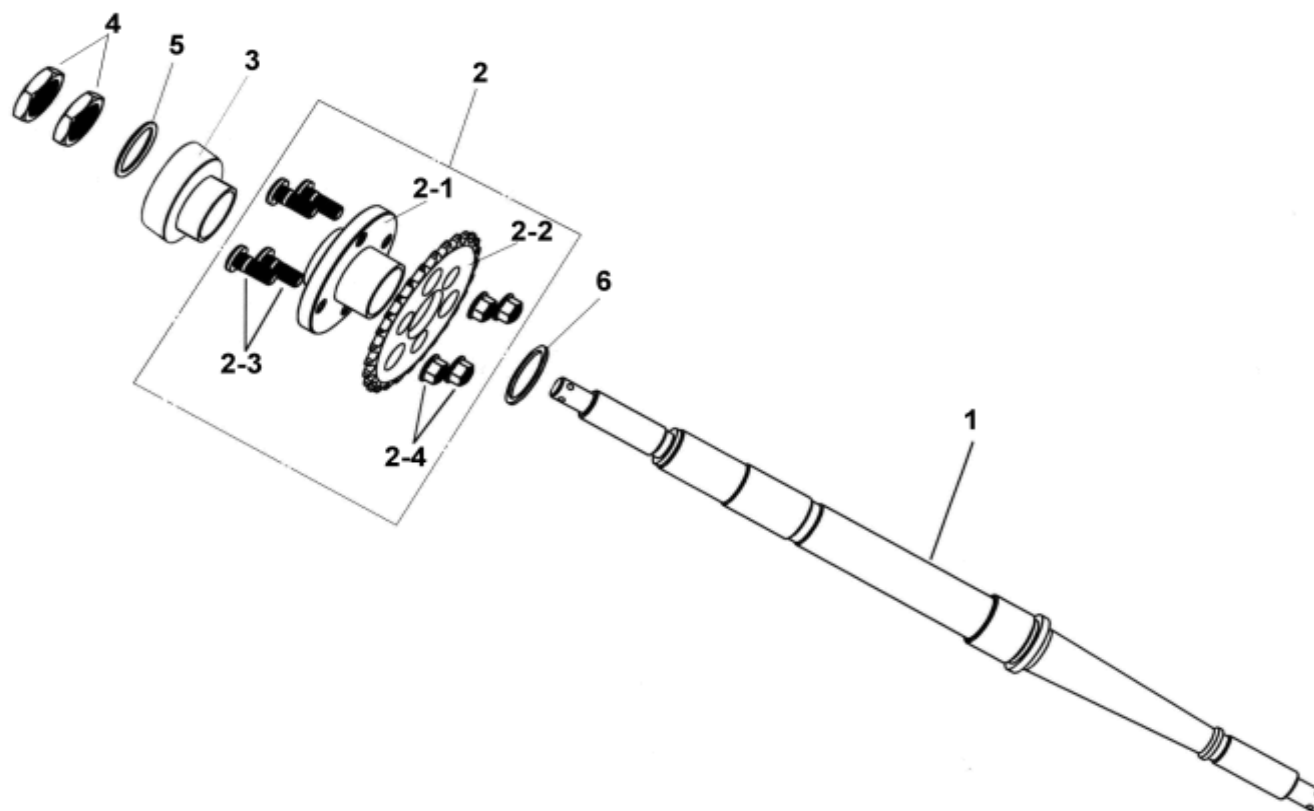
ITEM	PART NO.	NAME	Q'TY	品名	VIN NO	U.S	A.T	C.A
16		HANDLE BAR		手把				
16-1	E3100-4HA0-0000	HANDLE BAR ASSY.	1	手把總成				
16-2	E3166-4HA0-0000	GRIP HANDLE BAR CLAMP	2	握把				
16-3	E3111-4HA0-0000	HANDLE BAR CLAMP, CAP	1	手把固定座(上蓋)				
16-4	I0149-06020-0B	BOLT(M6×20)	4	凸緣螺栓				
16-5	E3170-4HC0-0000	LEFT LEVER ASSY.	1	左拉桿總成				
16-5-1	E3171-4HA0-0000	LEFT LEVER	1	左拉桿				
16-5-2	E3172-4HC0-0000	PLATE	1	固定板				
16-6	E3180-4HA0-0000	RIGHT LEVER ASSY.	1	右加油座總成				
16-6-1	E319A-4HA0-0000	LEVER ACCELERATE	1	加油座拉桿				
16-6-2	E3191-4HA0-0000	ACCELERATOR BODY	1	加油座本體				
16-7	C5200-4HC0-0000	HANDLE BAR ASSY. (LEFT)	1	左手把開關總成				
16-8	C2108-7EE0-0000	HANDLE BAR SAFETY SWITCH ASSY	1	手把安全開關				
16-9	I8506-04016	SCREW,PAN HEAD	2	盤頭螺絲				
16-10	E3183-4HA0-0000	COVER,RIGHT LEVER	1	右上蓋				
16-11	E3188-5EA0-0000	GASKET, RIGHT LEVER	1	右墊片				

17. FEND BAR, FOOTREST



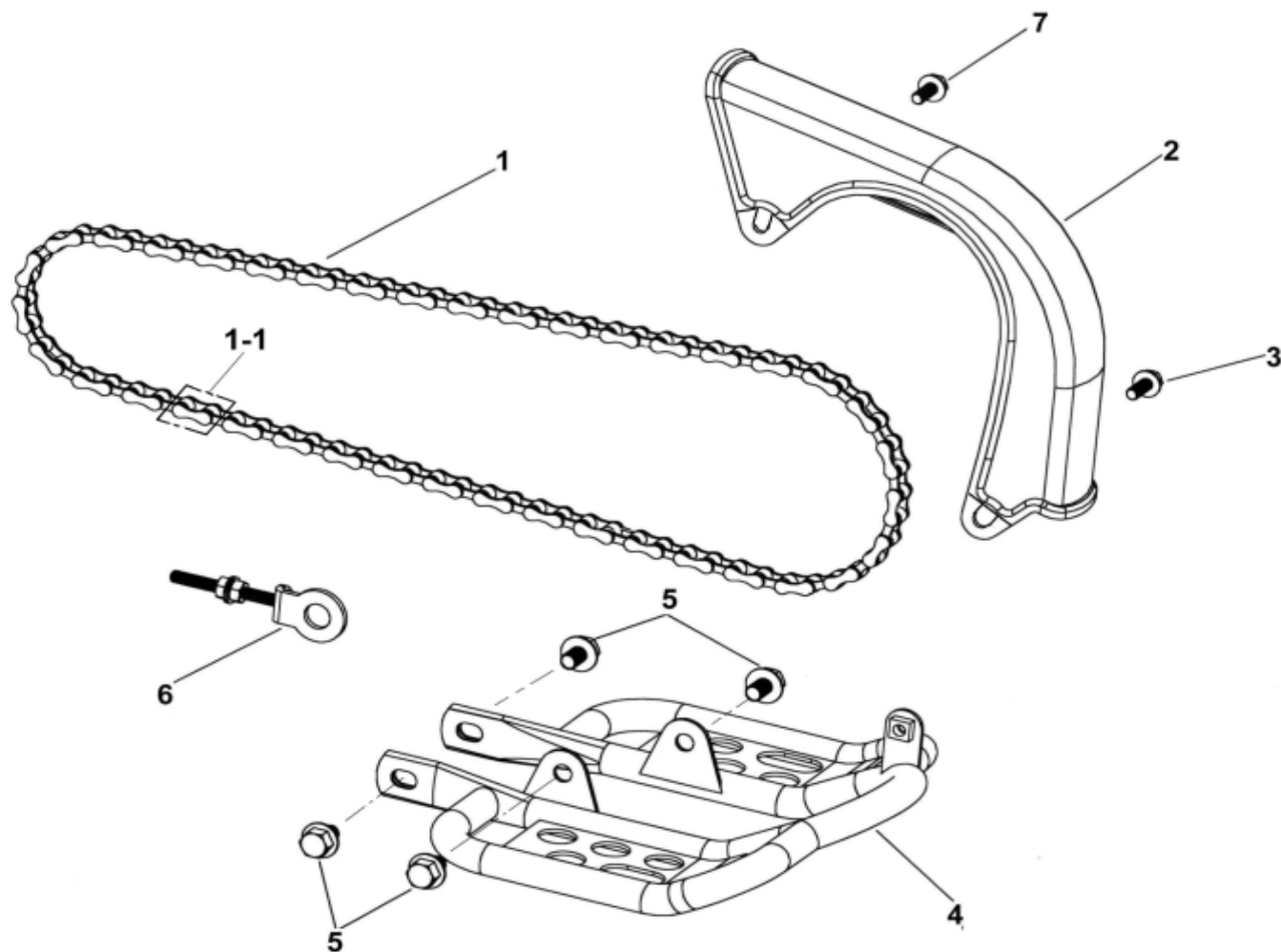
ITEM	PART NO.	NAME	Q'TY	品名	VIN NO	U.S	A.T	C.A
17		FOOTREST,FEND BAR						
17-1	E0400-4HB0-0000	FEND BAR ASSY.	1	前防護桿總成				N/A
	E0400-4HB4-0000	FEND BAR ASSY.	1	前防護桿總成		N/A	N/A	
17-2	I0149-08012	SCREW ,FLANGE (M8×12)	8	凸緣螺絲				
17-3	E0700-4HC0-0000	FOOTREST ASSY.	1	置腳踏桿總成				
17-4	E0201-4HA0-0000	BUSH(ψ20×ψ8.1×21×24)	3	襯套				
17-5	I0105-08040	BOLT ,FLANGE (M8×40)	3	凸緣螺栓				
17-6	I5611-08200	NUT,FLANGE CHECK(M8)	3	凸緣防鬆螺帽				
17-7	E0702-4HA0-0000	ENGINE MOUNTING ASSY.	3	引擎底座下固定組				
17-8	C510C-4HB0-0000	ABSORB WASHER	8	緩衝墊圈				
17-9	C3742-5BA2-0000	CIRCLE REFLECTOR,AMBER(DOT)	2	圓形反光片-橘色(DOT)		N/A	N/A	
17-10	I2020-60000	NUT, HEXAGON	2	六角螺帽		N/A	N/A	

18. REAR WHEEL AXLE



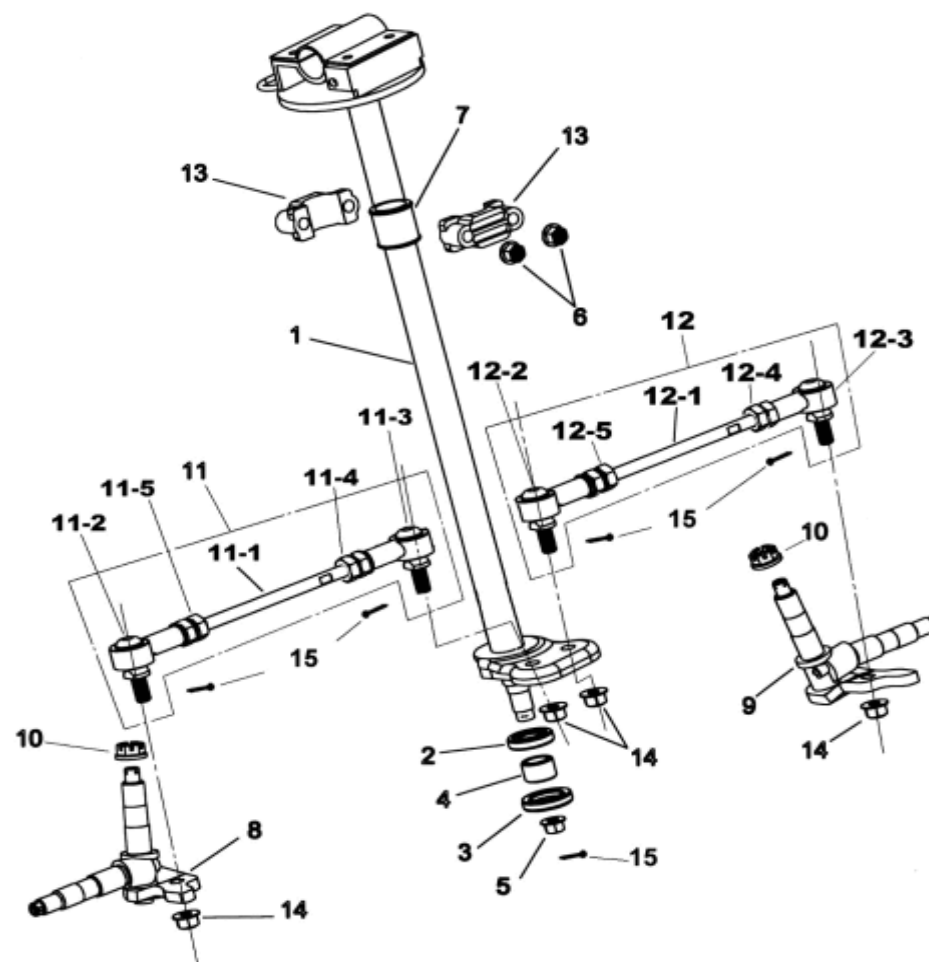
ITEM	PART NO.	NAME	Q'TY	品名	VIN NO	U.S	A.T	C.A
18		REAR WHEEL AXLE		後輪軸				
18-1	D2301-4HA0-0000	REAR AXLE	1	後輪軸				
18-2	D0110-4HA0-9000	DRIVE CHAIN ASSY (36T)	1	後鏈齒輪				
18-2-1	D0111-9EA0-0000	SPROCKET HOLDER, REAR	1	後鏈齒輪固定座				
18-2-2	D1111-4HA0-9000	GEAR(420×36T)	1	齒輪				
18-2-3	D2706-9EA0-0000	STUD (M10×20)	4	特殊螺栓				
18-2-4	I5611-10200	NUT,FLANGE CHECK (ψ10)	4	凸緣防鬆螺帽				
18-3	D0114-4HA0-0000	SPACER	1	鏈輪固定座隔筒				
18-4	D2302-9EA0-0000	NUT,REAR WHEEL AXLE	2	後輪軸螺帽				
18-5	I1303-4HA0-0000	O-RING	1	O型環				
18-6	I9905-35018	WASHER(ψ42×ψ35×1.8)	1	銅合金墊圈				

19. CHAIN



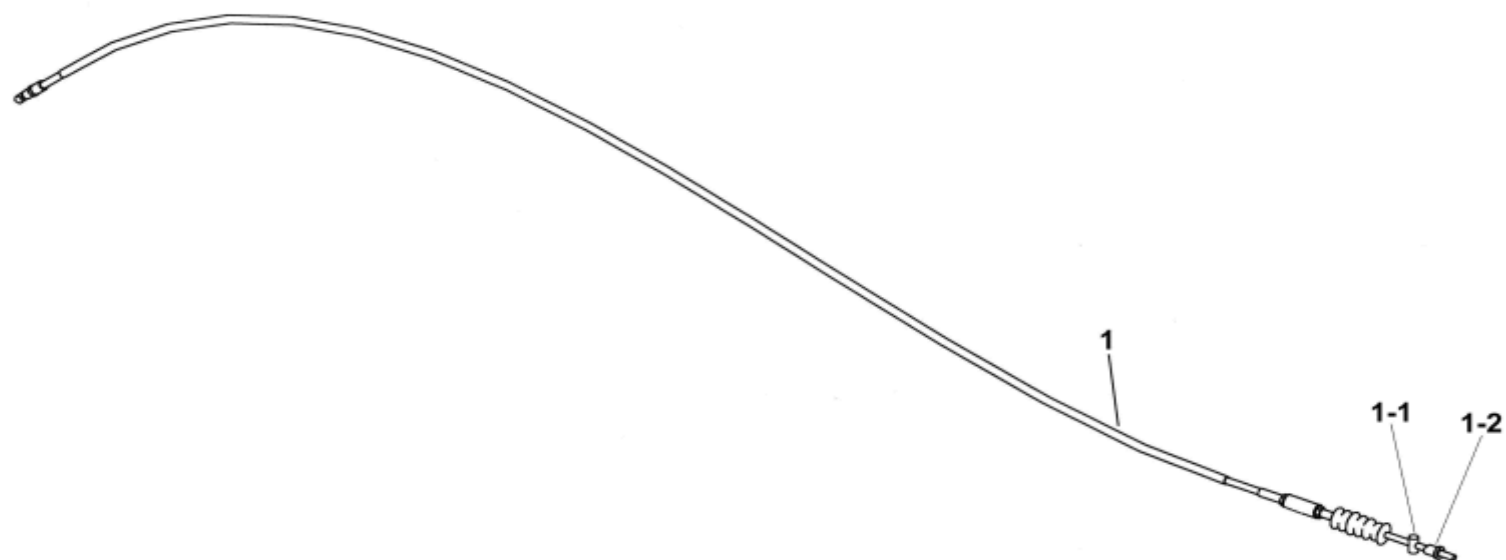
ITEM	PART NO.	NAME	Q'TY	品名	VIN NO	U.S	A.T	C.A
19		CHAIN						
19-1	D0100-5EA0-0000	DRIVE CHAIN ASSY. (420×78)	1	鏈條(420×78 目)				
19-1-1	D0104-5EA0-0000	MASTERLINK (#420)	1	鏈條接頭(#420)				
19-2	D0102-4HA0-0000	PROTECT COVER	1	鏈條上防護蓋				
19-3	I7507-06225	BOLT,HEXAGON HEAD(M6×25)	1	六角套頭螺栓				
19-4	D0101-4HA0-0000	BELOW PROTECT COVER	1	下防護蓋				
19-5	I0149-08016	BOLT,FLANGE(M8×16)	4	凸緣螺栓				
19-6	D0120-4HA0-0000	CHAIN ADJUSTER	1	鏈條調整器				
19-7	I0119-06030	BOLT,HEXAGON(M6×30)	1	六角套頭螺栓				

20. STEERING



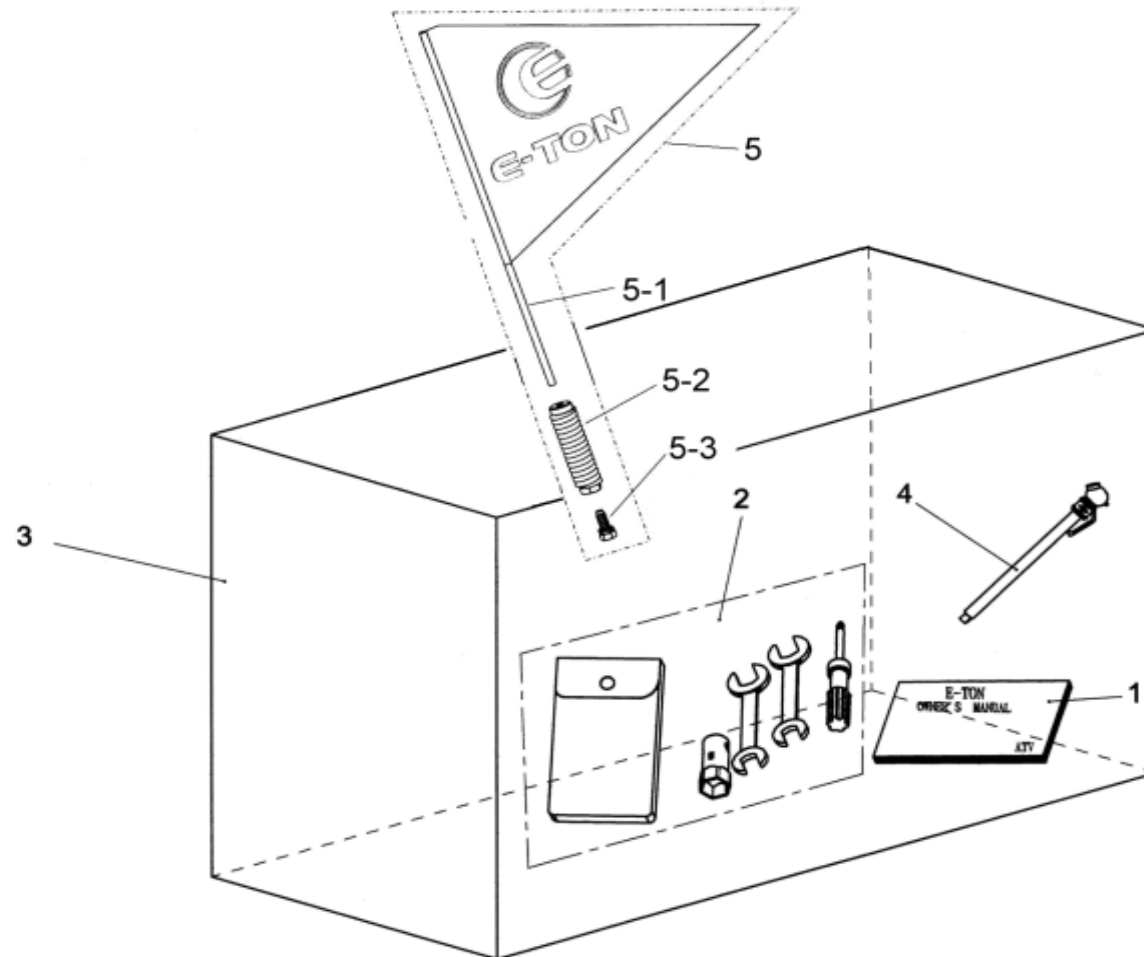
ITEM	PART NO.	NAME	Q'TY	品名	VIN NO	U.S	A.T	C.A
20		STEERING		轉向系統				
20-1	E3200-4HA0-9000	SHAFT, STEERING	1	轉向桿總成				
20-2	E3201-5EA0-0000	OIL SEAL(ψ18×ψ32×7)	1	油封				
20-3	I3102-5AC0-0000	OIL SEAL(ψ22×ψ35×7)	1	油封				
20-4	D4620-5EA0-0000	INNER SPACER(ψ15×ψ21.7×15)	1	內定距套				
20-5	I5611-14200	NUT, FLANGE CHECK (M14)	1	凸緣防鬆螺帽				
20-6	I5611-08200	NUT, FLANGE CHECK (M8)	2	凸緣防鬆螺帽				
20-7	E3225-5EA0-0000	PU LINER	1	PU 襯套				
20-8	E0205-4HA0-0000	KNUCKLE, LEFT	1	前輪轉向軸 (左)				
20-9	E0215-4HA0-0000	KNUCKLE, RIGHT	1	前輪轉向軸(右)				
20-10	I5550-20000	CASTLE FLANGE NUT (M10)	2	尼龍螺帽				
20-11	E0258-4HA0-0000	STEERING TIE-ROD ASSY., LEFT	1	轉向連桿總成(左)				
20-11-1	E0251-4HA0-0000	BOLT,STUD	1	雙頭牙螺栓				
20-11-2	E0255-FIA0-0000	UNIVERSAL JOINT(L)	1	萬向頭(左牙)				
20-11-3	E0256-FIA0-0000	UNIVERSAL JOINT(R)	1	萬向頭(右牙)				
20-11-4	E0252-5EA0-0000	NUT (R)	1	螺帽(右牙)				
20-11-5	E0253-5EA0-0000	NUT (L)	1	螺帽(左牙)				
20-12	E0259-4HA0-0000	STEERING TIE-ROD ASSY., RIGHT	1	轉向連桿總成(右)				
20-12-1	E0251-4HA0-0000	BOLT,STUD	1	雙頭牙螺栓				
20-12-2	E0255-FIA0-0000	UNIVERSAL JOINT(L)	1	萬向頭(左牙)				
20-12-3	E0256-FIA0-0000	UNIVERSAL JOINT(R)	1	萬向頭(右牙)				
20-12-4	E0252-5EA0-0000	NUT (R)	1	螺帽(右牙)				
20-12-5	E0253-5EA0-0000	NUT (L)	1	螺帽(左牙)				
20-13	E3202-9FA0-0000	HOLDER, STEERING SHAFT	2	轉向桿固定環				
20-14	I5611-10200	NUT ,FLANGE CHECK (M10)	4	凸緣防鬆螺帽				
20-15	I9900-25019	COTTER PIN	5	開口銷				

21. BRAKE



ITEM	PART NO.	NAME	Q'TY	品名	VIN NO	U.S	A.T	C.A
21		BRAKE						
21-1	E3450-4HA0-0000	CABLE, BRAKE REAR ASSY.	1	後煞車線總成				
21-1-1	E3453-5EA0-0000	CIRCULAR CYLINDER	1	圓柱				
21-1-2	E3454-4HA0-0000	NUT,ADJUSTING	1	調整螺帽				

22.TOOL BOX,PAKING CASE,EXTERNAL



ITEM	PART NO.	NAME	Q'TY	品名	VIN NO	U.S	A.T	C.A
22		TOOL BOX ,PAKING CASE,EXTERNAL						
22-1	H990A-4HC0-0000	OWNER'S MANUAL ASSY	1	使用手冊總成			N/A	
	H9900-4HC0-0000	OWNER'S MANUAL ASSY	1	使用手冊總成		N/A		N/A
*22-1-1	H9900-4HC0-9000	OWNER'S MANUAL	1	使用手冊			N/A	
22-2	H9020-4HA0-0000	TOOL SET	1	工具包				
22-3	H9500-4HA0-9000	PACKING CASE , EXTERNAL	1	紙箱				
22-4	H9022-5EA0-0000	TIRE PRESSURE GAUGE	1	胎壓計				
22-5	H840A-9EF0-0000	FLAG HOLDER ASSY	1	旗桿總成			N/A	
22-5-1	H8401-9EF0-0000	FLAG HOLDER	1	旗桿			N/A	
22-5-2	H8402-9EF0-0000	FLAG HOLDER SEAT	1	旗桿座			N/A	
22-5-3	I3415-08016-0C	BOLT HEXAGON HEAD WITH WASHER	1	六角螺栓+彈黃墊圈			N/A	