

# **E-TON**

## **PARTS LIST MANUAL**



**RXL-90R**

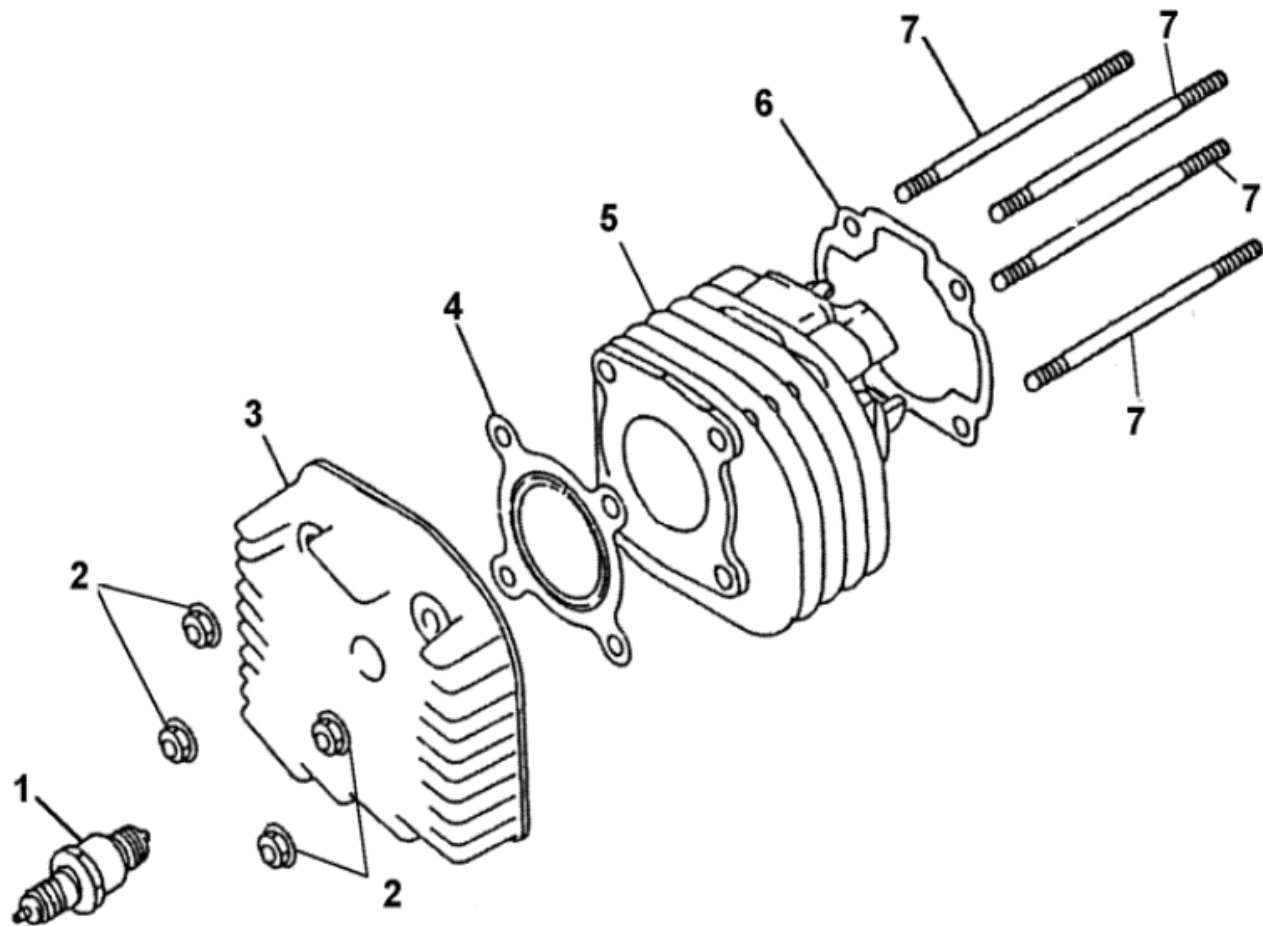
## CONTENTS

### PARTS ITEM

01	CYLINDER, HEAD	汽缸頭
02	CRANKSHAFT, PISTON	曲柄軸、活塞
03	FAN COVER, AIR SHROUD	引擎冷卻風扇系統
04	AIR CLEANER, REED VALVE , CARBURETOR	空氣濾清器、簧片閥總成、化油器
05	CRANK CASE, COVER, OIL PUMP	曲軸箱蓋、機油泵
06	TRANSMISSION	傳動軸
07	KICK SHAFT ASSY., STARTER CLUTCH ASSY.	腳踏軸總成、起動離合器總成
08	DRIVEN PULLEY (CVT)	CVT驅動皮帶輪
09	ENGINE ATV	引擎本體
10	GENERATOR, START MOTOR	發電機、起動馬達
11	PREARRANGE	預留
12	PREARRANGE	預留
13	MUFFLER	排氣管
14	FRAME	車架
15	SWING ARM,FOOTREST, FEND BAR	A臂、置腳踏桿、防護桿
16	FENDER	擋泥板
17	SEAT	座墊
18	FUEL TANK , OIL TANK	汽油箱、機油箱
19	SUSPENSION	避震器
20	FRONT WHEEL	前輪
21	REAR WHEEL	後輪
22	FRONT BRAKE	前煞車系統
23	REAR BRAKE	後煞車系統
24	HANDLE BAR	手把
25	REAR WHEEL AXLE	後輪軸
26	SWING ARM SUB,PROTECT COVER	後叉、防護蓋
27	STEERING	轉向系統
28	ELECTRICAL EQUIPMENT	電裝品
29	PACKING CASE,EXTERNAL	包裝外箱
30	MANUAL CHOKE KIT	手動阻風門小修包
31	ACCESSORIES	配件

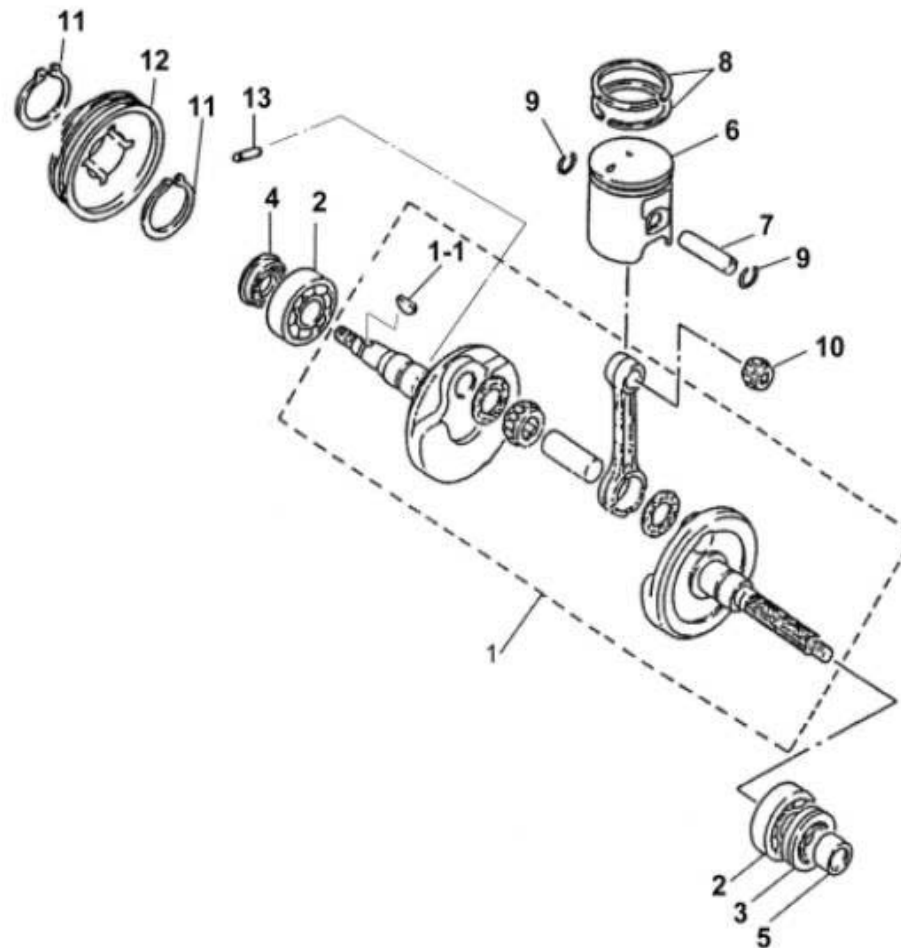
NOTE " \* "& the gray area : not available  
 " N/A" This part is used for your version.

## 1. CYLINDER, HEAD



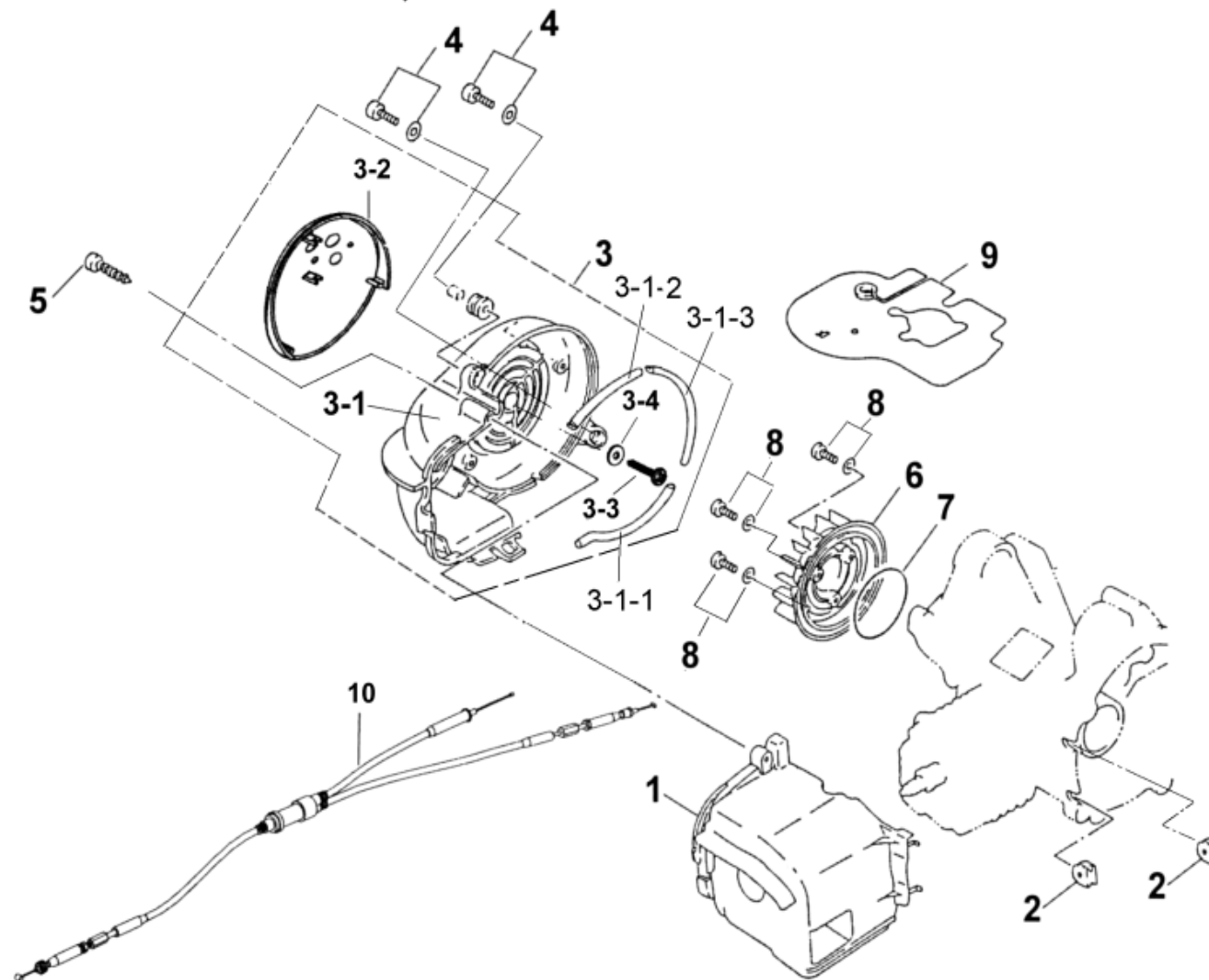
ITEM	PART NO.	NAME	Q'TY 品名	VIN NC U.S	U.K	H.L	C.A	A.L
1		CYLINDER, HEAD	汽缸頭					
1-1	I8000-B00-0000	SPARK PLUG (NGK BPR7HS)	1 火星塞 (NGK BPR7HS)					
1-2	I4050-07070-0H	NUT FLANGE	4 NO:005 六角帶頭螺帽					
1-3	A2200-B00-0000	HEAD CYLINDER	1 汽缸頭					
1-4	A2251-B00-0000	GASKET CYLINDER HEAD	1 汽缸頭墊片					
1-5	A2100-B00-0000	CYLINDER	1 汽缸					
1-6	A2191-B00-0000	GASKET CYLINDER	1 汽缸墊片					
1-7	I0031-07124-0H	STUD BOLT (A)	4 NO:004 汽缸螺栓(A)					

## 2. CRANKSHAFT, PISTON



ITEM	PART NO.	NAME	Q'TY 品名	VIN NC U.S	U.K	H.L	C.A	A.L
2		CRANKSHAFT, PISTON	曲柄軸, 活塞					
2-1	A3000-B00-8001	CRANK SHAFT COMP	1 曲柄軸組					
2-1-1	I4401-13050	WOODRUFF KEY	1 NO:002 半圓鍵					
2-2	I6100-62044-10	BEARING, BALL, RADIAL	2 NO:017 滾珠軸承					
2-3	I1202-B00-0000	SEAL OIL	1 油封 20*42*8					
2-4	I1201-B00-0000	SEAL OIL	1 油封 20*30*6					
2-5	B8117-B00-0000	BOSS	1 套筒					
2-6	A3101-B00-0000	PISTON	1 活塞					
2-7	A3111-B00-0000	PIN PISTON	1 活塞銷					
2-8	A3011-B00-0000	PISTON RING SET φ 50	1 活塞環組 φ 50					
2-9	I4601-12000	CLIP, PISTON PIN	2 NO:002 活塞銷扣環					
2-10	I1100-1215165	BEARING, NEEDLE	1 NO:007 滾針軸承					
2-11	I4510-19000	CIRCLIP EX	2 NO:006 C型扣環					
2-12	A5131-B00-0000	SPROCKET PUMP DRIVE	1 機油泵驅動齒輪					
2-13	I4303-03118	KNOCK PIN	1 NO:004 定位銷					

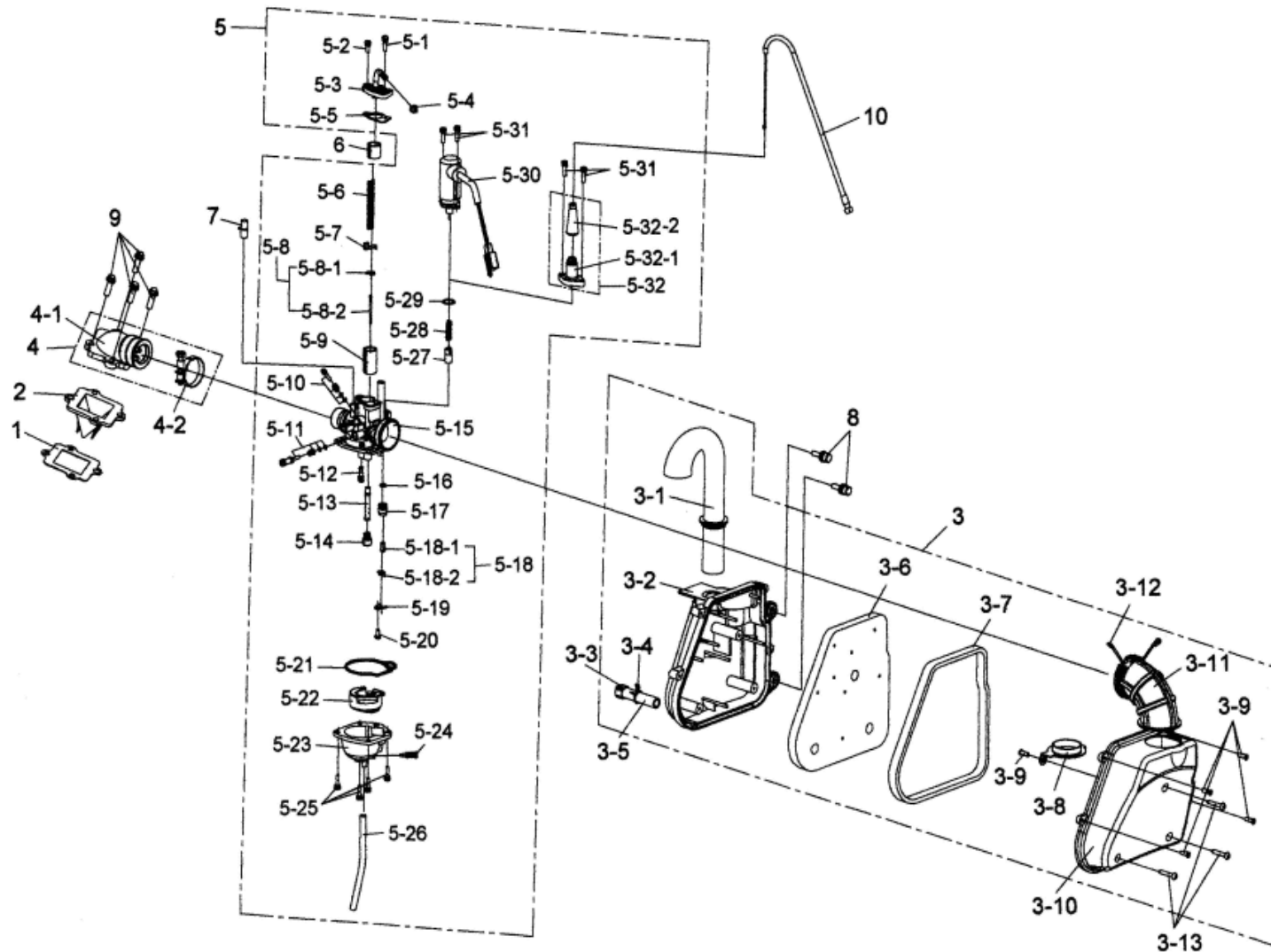
### 3. FAN COVER, SHROUD



ITEM	PART NO.	NAME	Q'TY 品名	VIN NC U.S	U.K	H.L	C.A	A.L
3		FAN COVER, AIR SHROUD						
3-1	A9620-B00-0001	COVER CYLINDER	1 汽缸罩蓋					
3-2	A1207-B00-0000	GROMMET	2 索環					
3-3	A961A-B00-0000	COVER ASSY FAN	1 冷卻風扇罩總成					
3-3-1	A9610-B00-0000	COVER COMP FAN	1 冷卻風扇罩組					
3-3-1-1	A9617-B00-0000	SEAL SHROUD 1	1 密封墊圈 1					
3-3-1-2	A9618-B00-0000	SEAL SHROUD 2	1 密封墊圈 2					
3-3-1-3	A9619-B00-0000	SEAL SHROUD 3	1 密封墊圈 3					
3-3-2	A9616-B00-0000	CAP FAN COVER	1 冷卻風扇罩外蓋					
3-3-3	I3903-416B0	TRUSS	1 NO:002 十字自攻螺絲					
3-3-4	I4104-05316	WASHER	1 NO:022 平墊圈					
3-4	I3891-06020-0C	SCREW WASHER	2 NO:003 圓頭十字螺絲+平墊圈					
3-5	I3901-240C0	TAPPING SCREW PAN	1 NO:001 圓頭十字自攻螺絲					
3-6	A9510-B00-0000	FAN COMP COOLING	1 冷卻風扇組					
3-7	I4608-64431	O-RING	1 NO:021 O型環					
3-8	I3893-06016-0H	SCREW WASHER	3 NO:004 圓頭十字螺絲+平墊圈+波形墊圈					
3-9	H0153-B00-0000	DEFLECTOR	1 轉折板					
3-10	A7910-5EE0-0000	CABLE ASSY THROT	1 加油導線總成					



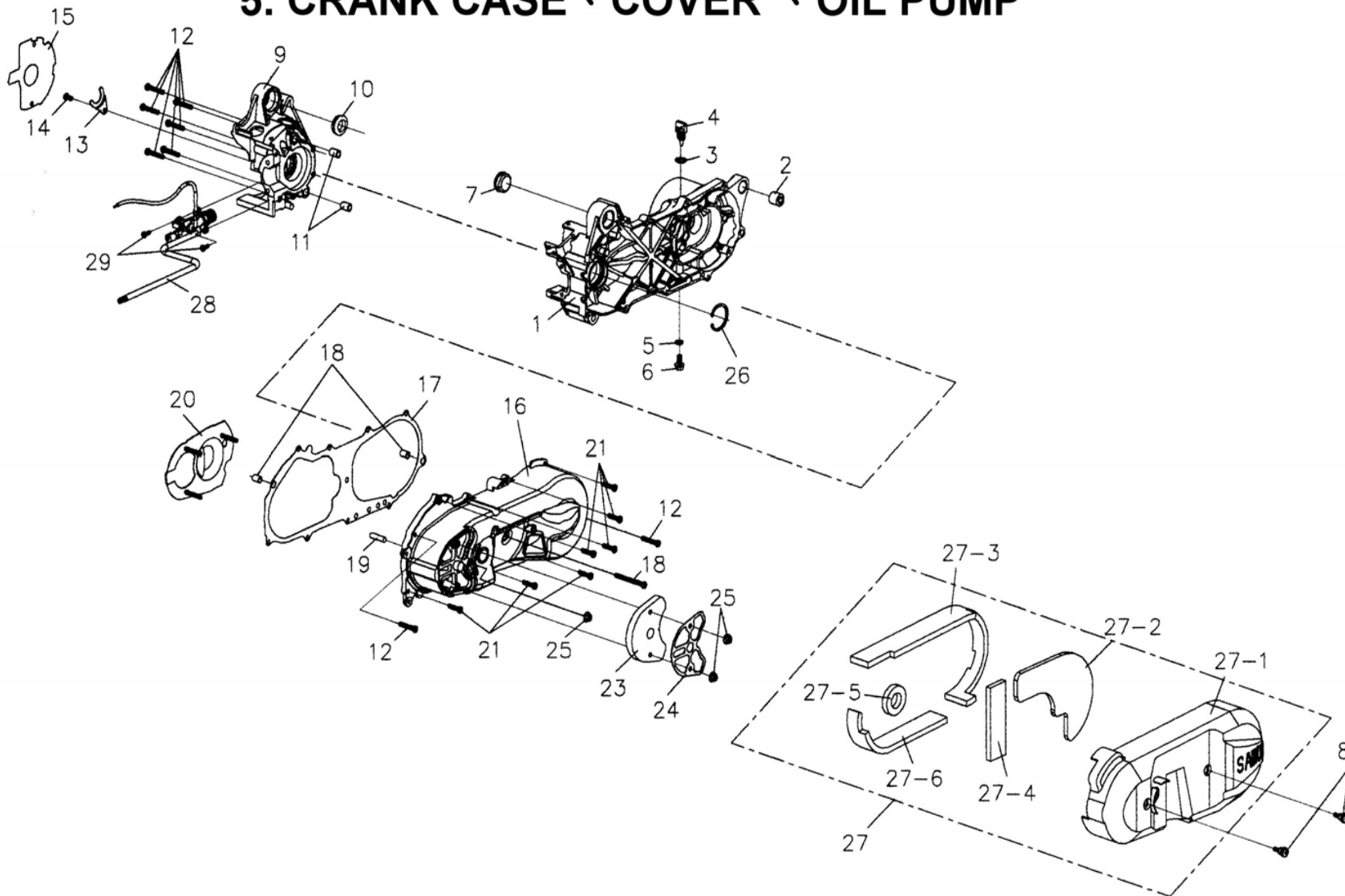
## 4. AIR CLEANER, REED VALVE, CARBURETOR



ITEM	PART NO.	NAME	Q'TY	品名	VIN	NC	U.S	U.K	H.L	C.A	A.L
4		AIR CLEANER、 REED VALV、 CARBURETOR									
4-1	A6201-B00-0000	GASKET, VALVE SEAT	1	簧片閥座墊片							
4-2	A410A-B00-0000	REED VALVE ASSY.	1	簧片閥總成							
4-3	A720A-B00-7000	AIR CLEANER ASSY. (ATV)	1	空氣濾清器總成							
4-3-1	A7257-B00-7000	DUCT	1	進氣導管							
4-3-2	A7230-B00-0000	CASE AIR CLEANER	1	空氣濾清器箱							
4-3-3	A7232-B00-0000	CAP	1	塞頭							
4-3-4	I5002-12312	TUBE CLIP	1	NO:010 管夾							
4-3-5	A7234-B00-0000	TUBE DRAIN	1	排洩管							
4-3-6	A7205-B00-0000	ELEMENT, AIR CLEANER	1	空氣濾清網							
4-3-7	A7214-B00-0000	SEAL	1	封圈							
4-3-8	A7233-B00-0000	PLATE FIXING CONNECTING TUBE	1	連接管固定片							
4-3-9	I3903-312B0	TRUSS	5	NO:009 十字自攻螺絲							
4-3-10	A7231-B00-0000	COVER AIR CLEANER	1	空氣濾清器蓋							
4-3-11	A7253-B00-0000	JOIN PIPE AIR CLEANER	1	空氣濾清器連接管							
4-3-12	I5002-43022	TUBE CLIP	1	NO:009 管夾							
4-3-13	I3901-425C0	SELF-TAPPING SCREW	3	NO:004自攻螺絲							
4-4	A711A-B00-0000	PIPE ASSY INLET	1	化油器接頭總成							
4-4-1	A7110-B00-0000	PIPE INLET COMP	1	化油接頭組							
4-4-2	A7256-B00-0000	BAND A CONNECTIOG TUBE	1	連接管固定帶							
4-5	A610A-B00-9000	CARBURETOR ASSY.	1	化油器總成 (手動CHOKE)				N/A	N/A		N/A
	A610A-B00-0001	CARBURETOR ASSY.	1	化油器總成 (自動CHOKE)	N/A					N/A	
4-5-1	A6111-B00-0000	BOLT WASHER	1	圓頭十字螺絲+彈簧墊圈							
4-5-2	A6109-B00-0000	BOLT WASHER	1	圓頭十字螺絲+彈簧墊圈							
4-5-3	A6102-B00-0000	CARBURETOR COVER	1	化油器上蓋							
4-5-4	A6112-B00-0000	NUT HEX	1	六角螺帽							
4-5-5	A6103-B00-0000	CARBURETOR COVER WASHER	1	化油器上蓋墊片							
4-5-6	KAC31810	THROTTLE VALVE SPRING	1	油門彈簧							
4-5-7	KAC30310	V CLIP	1	V型扣環							
4-5-8	KAC30220	JET NEEDLE ASSY. (#3CR1)	1	閥針組 (*3CR1)							
*4-5-8-1	KAC30222	E CLIP	1	E型扣環							
*4-5-8-2	KAC30221	JET NEEDLE (#3CR1)	1	閥針 (*3CR1)							
4-5-9	KAC30110	THROTTLE VALVE (#3.0)	1	活塞							
4-5-10	A6105-B00-0000	THROTTLE ADJUSTING SCREW	1	空氣栓總成							
4-5-11	KAC30840	THROTTLE ADJUSTING SCREW	1	空氣栓總成							

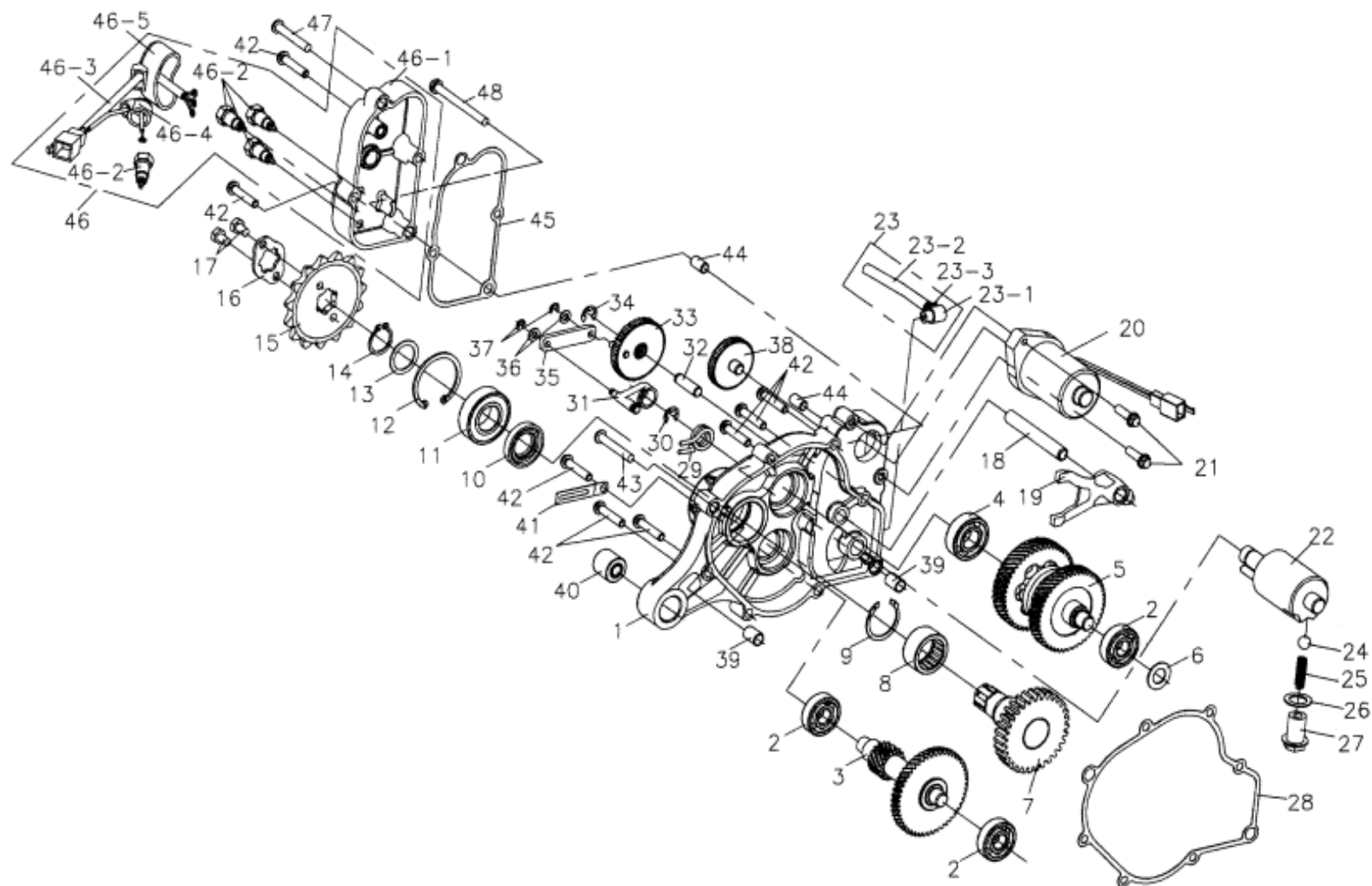
ITEM	PART NO.	NAME	Q'TY	品名	VIN NC U.S	U.K	H.L	C.A	A.L
4		AIR CLEANER 、 REED VALV 、 CARBURETOR							
4-5-12	KAC30510	SLOW JET (*20)	1	低速噴嘴					
4-5-13	KAC30610	NEEDLE JET (*681 E-3)	1	噴嘴閥座					
4-5-14	KAC30410	MAIN JET (#85)	1	主噴油嘴 #85					
4-5-15	A6104-B00-0000	CARBURETOR BODY	1	化油器本體					
4-5-16	A6118-B00-0000	O-RING	1	O型環					
4-5-17	A6119-B00-0000	NEEDLE VALVE SEAT	1	針閥座					
4-5-18	KAC31120	NEEDLE VALVE ASSY.	1	針閥總成					
*4-5-18-1	KAC31121	NEEDLE VALVE	1	針閥					
*4-5-18-2	KAC31122	FLOAT CLIP	1	浮筒扣環					
4-5-19	A6120-B00-0000	PLATE FIXING	1	固定片					
4-5-20	A6115-B00-0000	BOLT	1	螺栓					
4-5-21	KAC30910	CHAMBER O-RING	1	底蓋方型環					
4-5-22	KAC31210	FLOAT ASSY	1	浮筒總成					
4-5-23	A6108-B00-0000	CARBURETOR CHAMBER	1	化油器底蓋					
4-5-24	KAC31410	DRAIN SCREW	1	洩油螺栓					
4-5-25	A6117-B00-0000	BOLT WASHER	4	圓頭十字螺絲+彈簧墊圈					
4-5-26	A6106-B00-0000	RUBBER TUBE	1	橡膠管					
4-5-27	A6153-B00-0000	MANUAL CHOKE VALVE	1	手動式活塞閥					
4-5-28	A6152-B00-0000	SPRING	1	壓縮彈簧					
4-5-29	A6113-B00-0000	O-RING	1	O型環					
4-5-30	KAC31910	AUTO-BY STARTER	1	自動阻風門	N/A			N/A	
4-5-31	A6114-B00-0000	BOLT WASHER	2	圓頭十字螺絲+彈簧墊圈					
4-5-32	A6110-B02-0000	MANUAL CHOKE COMP	1	手動啓動組		N/A	N/A		N/A
4-5-32-1	A6154-B00-0000	MANUAL CHOKE VALVE SEAT	1	閥座本體		N/A	N/A		N/A
4-5-32-2	A6155-B00-0000	JACKET	1	保護套		N/A	N/A		N/A
4-6	A6022-5EC9-0000	RESTICTOR CARBURETOR	1	化油器限速環	N/A				
4-7	A6101-B02-0000	CARBURETOR RUBBER	1	化油器橡膠套					
4-8	I6706-06020-0C	SCREW SOCKET WITH WASHER	2	NO:001內六角螺栓附墊圈					
4-9	I6001-06020-0H	BOLT,HEXAGON HEAD	4	NO:001六角帶頭螺栓					
4-10	A7920-B02-0000	AIR CUT CABLE	1	阻風門線		N/A	N/A		N/A

## 5. CRANK CASE 、 COVER 、 OIL PUMP



ITEM	PART NO.	NAME	Q'TY	品名	VIN NC U.S	U.K	H.L	C.A	A.L
5		CRANK CASE 、 COVER 、 OIL PUMP							
5-1	A1200-B07-0900	CRANK CASE LEFT	1	左曲軸箱					
5-2	A1203-B00-0000	RUBBER BUSH REAR CUSHION	1	後緩衝器襯套					
5-3	I4608-13825	O-RING	1	NO:005 O型環					
5-4	A5651-B00-0000	PLUG OIL	1	注油塞					
5-5	I4104-08015	WASHER	1	NO:016 平墊圈					
5-6	I5701-08016-0H	BOLT FLANGE	1	NO:005 六角帶頭螺栓					
5-7	A1205-B00-0000	RUBBER CAP LEFT	1	左橡膠塞					
5-8	A137A-B00-0000	BOLT (M6*23.5)	2	螺栓 (M6*23.5)					
5-9	A1100-B07-0900	CRANK CASE RIGHT	1	右曲軸箱					
5-10	A1105-B00-0000	RUBBER CAP R	1	右橡膠塞					
5-11	I4301-12160	KNOCK PIN	2	NO:010 定位銷					
5-12	I3500-06035-0A	SCREW PAN	8	NO:012 圓頭十字螺絲					
5-13	A1121-B00-0000	HOLDER	1	支座					
5-14	I3500-06012-0A	SCREW WASHER	1	NO:013 圓頭十字螺絲+波形墊圈					
5-15	A1393-B00-0000	GASKET R CRANK CASE	1	右曲軸箱墊片					
5-16	A1341-B00-0000	COVER L SIDE	1	左曲軸箱側蓋					
5-17	A1395-B00-0000	GASKET L COVER	1	左曲軸箱側蓋墊片					
5-18	I4301-10140	KNOCK PIN	2	NO:009 定位銷					
5-19	A1342-B00-0000	SHAFT	1	軸					
5-20	A1361-B00-0000	PLATE	1	板					
5-21	I3500-06025-0A	SCREW PAN	8	NO:013 圓頭十字螺絲					
5-22	I3500-06065-0A	SCREW PAN	1	NO:011 圓頭十字螺絲					
5-23	A1362-B00-0000	ELEMENT	1	過濾器					
5-24	A1363-B00-0000	COVER ELEMENT	1	過濾蓋					
5-25	I4050-06060-0H	NUT FLANGE	3	NO:003 六角帶頭螺帽					
5-26	I4520-42000	CIRCLIP EX	1	NO:002 C型扣環					
5-27	A135A-B00-0000	COVER, CRANKCASE ASSY(L)	1	左曲軸箱外蓋總成					
5-27-1	A1351-B00-0000	COVER, CRANKCASE (L)	1	左曲軸箱外蓋					
5-27-2	A1352-B00-0000	DAMPER, ENGINE MOUNT 1	1	防震墊1					
5-27-3	A1354-B00-0000	DAMPER, ENGINE MOUNT 3	1	防震墊3					
5-27-4	A1353-B00-0000	DAMPER, ENGINE MOUNT 2	1	防震墊2					
5-27-5	A1356-B00-0000	DAMPER, ENGINE MOUNT 5	1	防震墊5					
5-27-6	A1355-B00-0000	DAMPER, ENGINE MOUNT 4	1	防震墊4					
5-28	A510A-B00-9000	OIL PUMP ASSY.	1	機油泵總成					
5-29	I3500-05014-0A	SCREW, PAN HEAD (M5×14)	2	NO:006盤頭螺絲					

## 6. TRANSMISSION

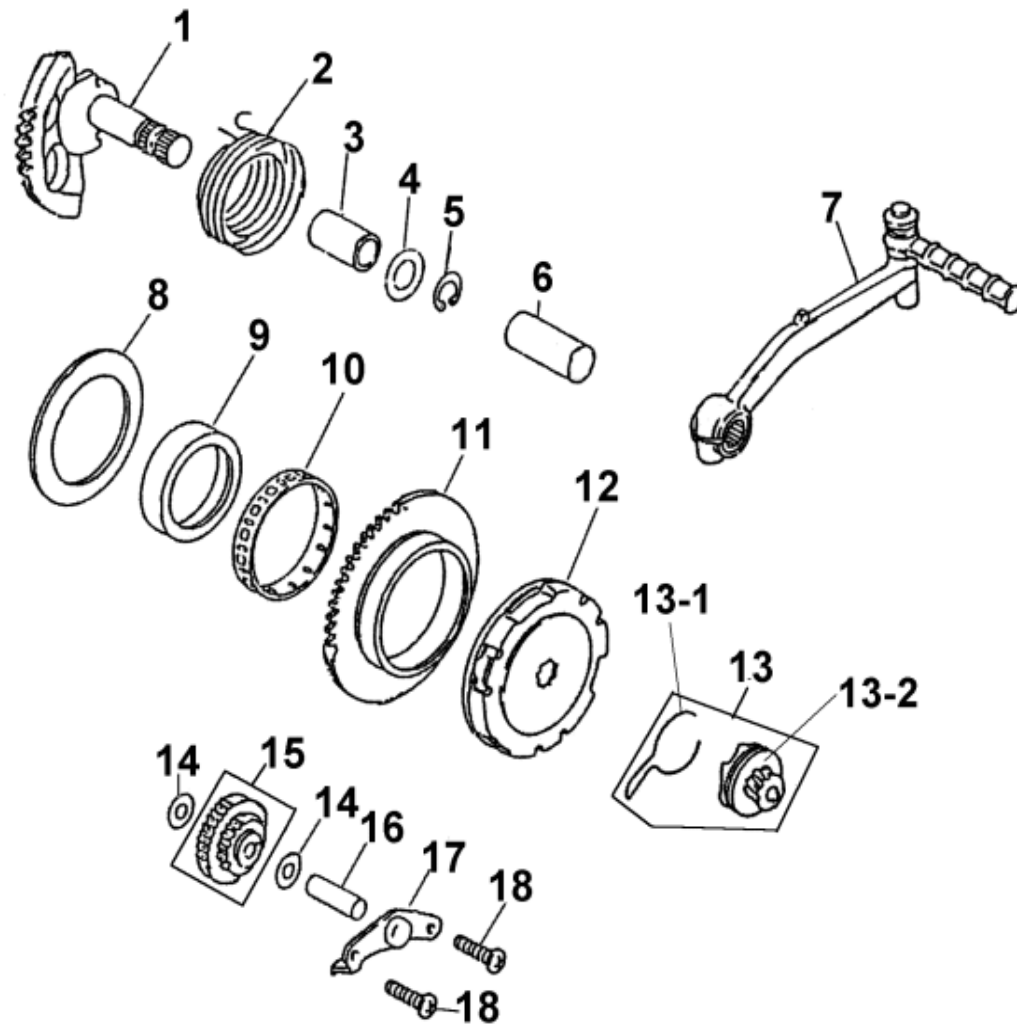


ITEM	PART NO.	NAME	Q'TY 品名	VIN NC U.S	U.K H.L	C.A A.L
6		TRANSMISSION				
6-1	B1300-B07-0900	COVER MISSION	1 齒輪箱蓋			
6-2	I6100-62013-10	BEARING, BALL, RADIAL	3 NO:021 滾珠軸承			
6-3	B3250-B07-0000	REVERSE SHAFT COMP	1 倒退軸組			
6-4	I6100-62020	BEARING, BALL, RADIAL	1 NO:014 滾珠軸承			
6-5	B3420-B07-0000	COUNTER SHAFT COMP	1 中間軸組			
6-6	I4104-12310	WASHER	1 NO:018 平墊圈			
6-7	B3430-B07-0000	FINAL SHAFT COMP	1 最終軸組			
6-8	I1130-253316	BEARING, NEEDLE	1 NO:004滾針軸承			
6-9	I4530-32000	CIRCLIP	1 NO:002 特殊C型扣環			
6-10	I1204-B00-0000	OIL SEAL	1 油封 25*35*6			
6-11	I6150-60040-10	BEARING, BALL, RADIAL	1 NO:019 滾珠軸承			
6-12	I4520-42000	CIRCLIP EX	1 NO:002 C型扣環			
6-13	I4104-20210	WASHER	1 NO:011 平墊圈			
6-14	I4510-20000	CIRCLIP EX	1 NO:010 C型扣環			
6-15	B3801-B00-9000	SPROCKET DRIVE (15T)	1 傳動鏈輪 (15T)			
6-16	B3811-A00-0000	PLATE A2 FIXING	1 鏈輪固定片			
6-17	I2201-06010-0H	BOLT	2 NO:006 六角螺栓			
6-18	B4241-B07-0000	SHAFT GEAR SHIFT	1 換檔叉軸			
6-19	B4231-B07-0000	FORK SHIFT	1 換檔叉片			
6-20	C2300-B07-0000	MOTOR COMP SHIFT	1 變檔馬達組			
6-21	I6001-06020-0H	BOLT FLANGE	2 NO:001 六角帶頭螺栓			
6-22	B4300-B07-0000	DRUM COMP GEAR SHIFT	1 換檔鼓組			
6-23	A1220-B00-0000	BREATHER COMP	1 呼吸管組			
6-23-1	A1206-B00-0000	BREATHER JOINT	1 呼吸管接頭			
6-23-2	A1221-B00-0000	HOSE BREATHER	1 呼吸管			
6-23-3	I5002-06008	TUBE CLIP	1 NO:008 管夾			
6-24	B4307-V30-0000	BALL BEARING	1 鋼珠			
6-25	B4306-V30-0000	SPRING FIXED CATCH	1 檔位固定彈簧			
6-26	I4104-14210	WASHER	1 NO:057 平墊圈			
6-27	B4305-V30-0000	SCREW FIXING	1 檔位固定螺絲			

ITEM	PART NO.	NAME	Q'TY	品名	VIN NC U.S	U.K	H.L	C.A	A.L
6		TRANSMISSION							
6-28	B1395-B07-0000	GASKET MISSION COVER	1	齒輪箱蓋墊片					
6-29	B4303-B07-0000	SPRING GEAR SHAFT RETURN	1	換檔鼓彈簧					
6-30	I4540-1001G	CIRCLIP	1	NO:012 E 型扣環					
6-31	B4600-B07-0000	DRIVEN ARM	1	驅動臂					
6-32	B4463-B07-0000	GEAR SHAFT B	1	轉接齒輪B軸					
6-33	B4460-B07-0000	GEAR B COMP	1	轉接齒輪B組					
6-34	I4540-0701G	CIRCLIP	1	NO:011 E 型扣環					
6-35	B4500-B07-0000	CONNECT PLATE	1	連桿					
6-36	I4101-05210	WASHER	2	NO:056 平墊圈					
6-37	I4540-0401A	CIRCLIP	2	NO:009 E 型扣環					
6-38	B4450-B07-0000	GEAR A COMP	1	轉接齒輪A組					
6-39	I4301-10140	KNOCK PIN	2	NO:009 定位銷					
6-40	A1203-B00-0000	RUBBER BUSH RR CUSHION	1	後緩衝器襯套					
6-41	C2963-A09-0000	CLAMPER DRAIN TUBE	1	線夾					
6-42	I3500-06030-0A	SCREW PAN	8	NO:020 圓頭十字螺絲					
6-43	I3500-06040-0A	SCREW PAN	1	NO:027 圓頭十字螺絲					
6-44	I4301-08140	KNOCK PIN	2	NO:008 定位銷					
6-45	B1396-B07-0000	GASKET MISSION SIDE COVER	1	齒輪箱側蓋墊片					
6-46	B132A-B07-0000	SIDE COVER MISSION ASSY	1	齒輪箱側蓋總成					
6-46-1	B1320-B07-0900	SIDE COVER MISSION	1	齒輪箱側蓋					
6-46-2	C5750-B07-0000	SHIFT SWITCH	4	檔位感應器					
6-46-3	C5760-B07-0000	SHIFT SWITCH LINE	1	檔位感應器配線					
6-46-4	B1321-B07-0000	DUST COVER A	1	防塵套 A					
6-46-5	B1322-B07-0000	DUST COVER B	1	防塵套 B					
6-47	I3500-06035-0A	SCREW PAN	1	NO:012 圓頭十字螺絲					
6-48	I3500-06065-0A	SCREW PAN	1	NO:011 圓頭十字螺絲					

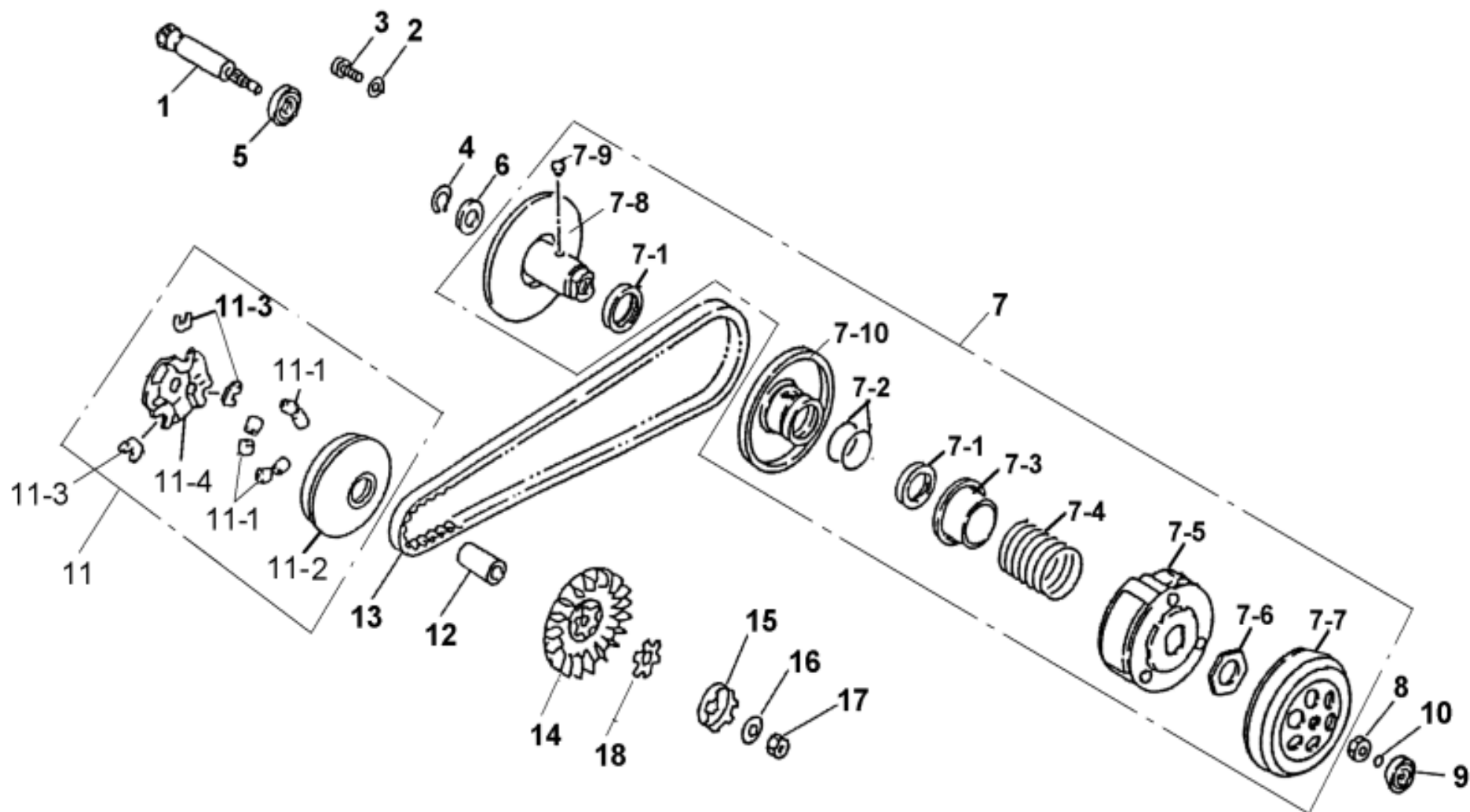


## 7.KICK SHAFT ASSY., STARTER CLUTCH ASSY.



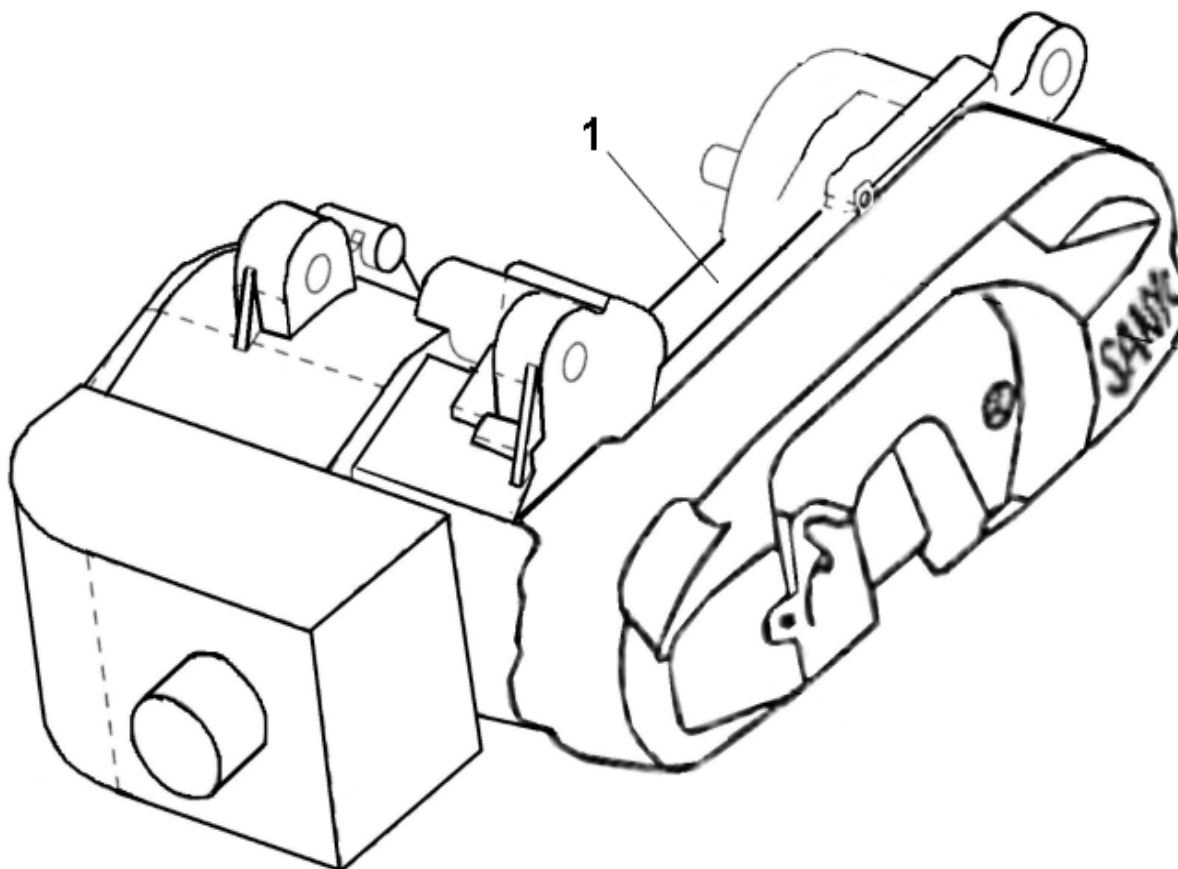
ITEM	PART NO.	NAME	Q'TY	品名	VIN NC U.S	U.K	H.L	C.A	A.L
7		KICK SHAFT ASSY 、 STARTER CLUTCH ASSY.							
7-1	B8250-B00-9000	SPINDLE COMP KICK START	1	起動軸組(A.T.V)					
7-2	B8281-B00-0000	SPRING KICK RETURN	1	起動軸彈簧					
7-3	B8254-B00-0000	BOSS KICK SPINDLE	1	起動軸套筒					
7-4	I4104-15010	WASHER	1	NO:020 平墊圈					
7-5	I4510-15000	CIRCLIP EX	1	NO:003 C型扣環					
7-6	A1000-5EA0-0000	RUBBER CAP KICK SHAFT	1	腳起動軸護套					
7-7	B8300-B00-9001	ARM COMP KICK STARTER	1	起動桿組(A.T.V)					
7-8	I4104-55506	WASHER	1	NO:069 平墊圈					
7-9	B8115-B00-0000	BOSS GEAR	1	齒輪轂					
7-10	I1100-555913	BRG NEDDLE	1	NO:006 滾針軸承					
7-11	B8110-B00-0000	GEAR COMP STARTING CLUTCH	1	起動離合器齒輪組					
7-12	B8120-B00-0000	OUTER COMP ST CLUTCH	1	單向傳動器組					
7-13	B823A-B00-0000	KICK PINION ASSY	1	起動惰齒輪總成					
7-13-1	B8223-B00-0000	SPG KICK DRIVEN GEAR	1	起動惰齒輪彈簧					
7-13-2	B8230-B00-0000	GEAR COMP KICK DRIVEN	1	起動惰齒輪組					
7-14	I4104-08218	WASHER	2	NO:021 平墊圈					
7-15	B8100-B00-0000	GEAR COMP STARTER REDUCTIOI	1	起動減速齒輪組					
7-16	B8102-B00-0000	SHAFT START REDUCTION	1	起動減速齒輪軸					
7-17	B8105-B00-0000	PLATE START REDUCTION	1	起動減速齒輪板					
7-18	I3892-06014-0H	SCREW WASHER	2	NO:013 圓頭十字螺絲+波形墊圈					

## 8.DRIVEN PULLEY (CVT)



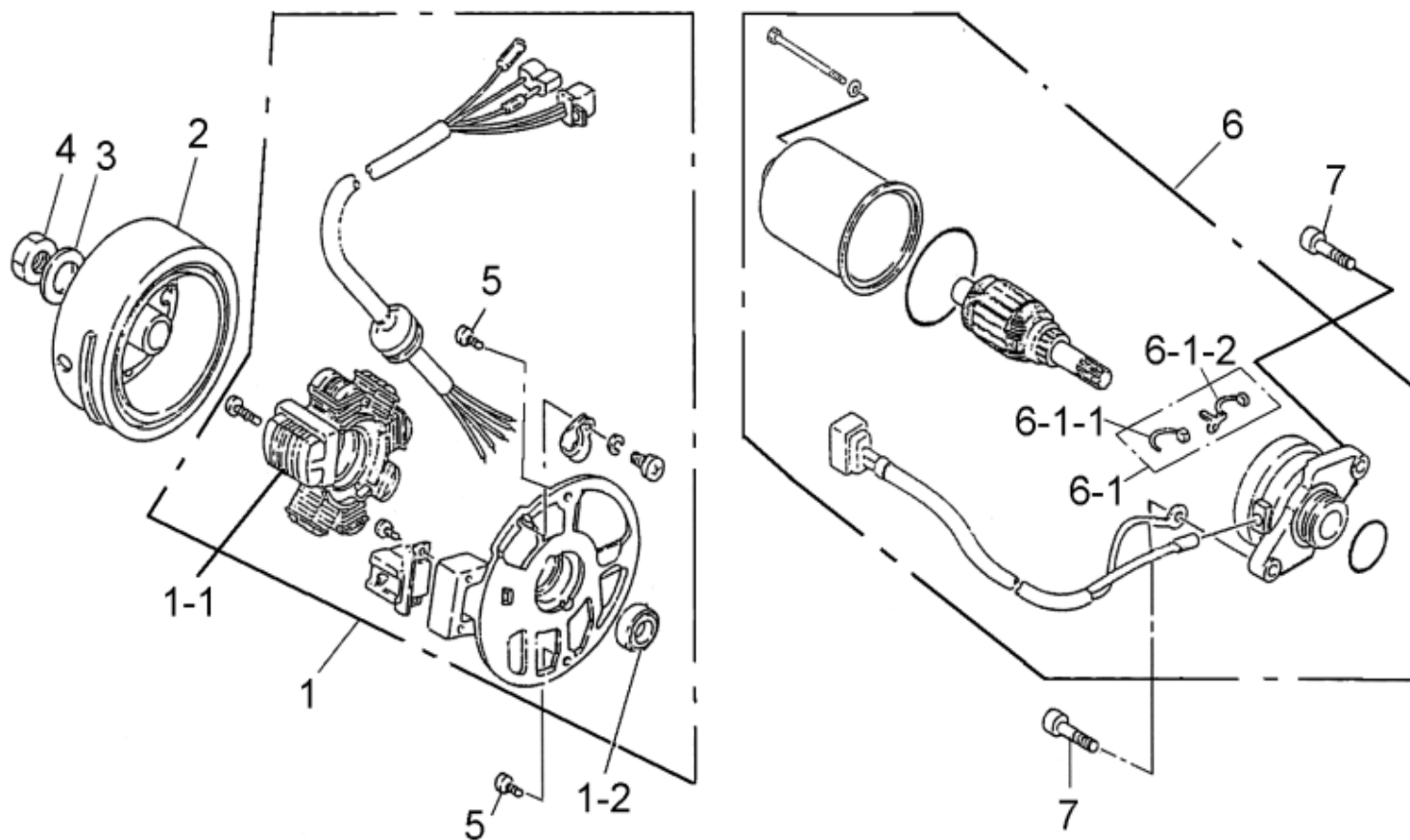
ITEM	PART NO.	NAME	Q'TY	品名	VIN NC U.S	U.K	H.L	C.A	A.L
8		DRIVEN PULLEY (CVT)							
8-1	B3411-B07-0000	SHAFT DRIVE	1	驅動軸					
8-2	I4104-06512A	WASHER	1	NO:086 平墊圈					
8-3	I3500-06010-0A	SCREW PAN	1	NO:018 圓頭十字螺絲					
8-4	I4510-17000	CIRCLIP	1	NO:005C形扣環					
8-5	I6100-60030	BEARING RADIAL BALL	1	NO:016軸承					
8-6	I1203-B00-0000	OIL SEAL (17×28×5.5)	1	油封					
8-7	B301A-B00-0000	PLATE SUB ASSY DRIVE	1	C.V.T從動輪總成					
8-7-1	I1211-B00-0000	SEAL,OIL	2	油封					
8-7-2	I4608-36719	O-RING	2	NO:023 O型環					
8-7-3	B3237-B00-0000	COLLAR SEAL	1	油封套筒					
8-7-4	B3233-B00-0000	SPG DRIVEN FACE	1	CVT彈簧					
8-7-5	B2300-B00-0000	PLATE COMP DRIVE	1	離合器組					
8-7-6	I4002-281A0	NUT HEXAGON	1	NO:005 六角螺帽					
8-7-7	B2100-B00-0000	CLUTCH HOUSING COMP.	1	離合器殼組					
8-7-8	B3210-B00-0000	PLATE SUB DRIVE COMP	1	CVT從動輪組					
8-7-9	B3225-B00-0000	PIN GUIDE	2	CVT從動輪導銷					
8-7-10	B3220-B00-0000	PLATE SUB DRIVE	1	CVT從動輪					
8-8	I4050-10080-0H	NUT,HEXAGON HEAD	1	NO:004 六角帶頭螺帽					
8-9	I6130-60380-10	BEARING, BALL, RADIAL	1	NO:018 滾珠軸承					
8-10	I4608-64531	O-RING	1	NO:022 O型環					
8-11	B211A-B00-0000	FACE ASSY MOVABLE DRIVE	1	CVT主動輪總成					
8-11-1	B2121-B00-0000	ROLLER COMP WEIGHT	6	配重滾子組					
8-11-2	B2110-B00-0000	FACE COMP MOVABLE DRIVE	1	CVT主動輪組					
8-11-3	B2132-B00-0000	PIECE SLIDE	3	CVT滑槽片					
8-11-4	B2131-B00-0000	PLATE RAMP	1	C.V.T滾柱導板					
8-12	B2105-B00-0000	BOSS DRIVE FACE	1	襯套					
8-13	B3100-B00-0000	BELT DRIVE	1	驅動皮帶					
8-14	B2102-B00-0000	FACE DRIVE	1	CVT風扇					
8-15	B8211-B00-0000	CLUTCH, ONEWAY	1	單向離合器					
8-16	I700W-10126	SPOKE NIPPLE WASHER	1	NO:001 錐形彈簧墊圈					
8-17	I4001-100C0	NUT HEXAGON	1	NO:004 六角螺帽					
8-18	B2103-B00-0000	WASHER DRIVE FACE	1	CVT風扇墊圈					

## 9.ENGINE BRACKET



ITEM	PART NO.	NAME	Q'TY 品名	VIN NC U.S	U.K H.L C.A A.L
9		ENGINE ATV	引擎本體		
9-1	AB000-B07-0000	ENG ATV	1 引擎本體		N/A N/A N/A
	AB000-B07-9000	ENG ATV	1 引擎本體	N/A	N/A

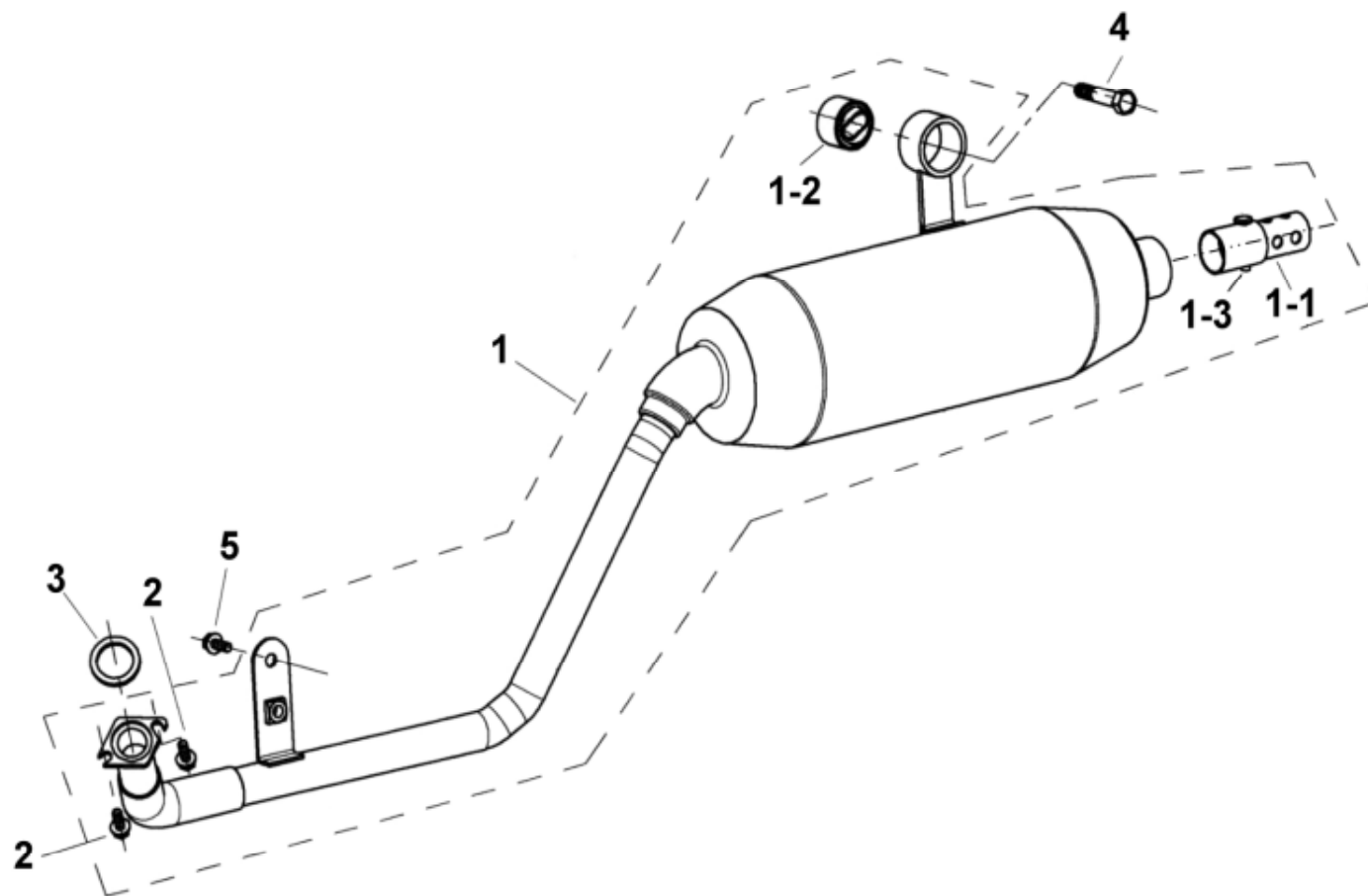
## 10. GENERATOR / START MOTOR



ITEM	PART NO.	NAME	Q'TY 品名	VIN NC U.S	U.K	H.L	C.A	A.L
10		GENERATOR, START MOTOR						
10-1	C1120-B00-0000	STARTER COMP	1 定子線圈組					
*10-1-1	C1121-B00-0000	STARTER	1 定子線圈					
*10-1-2	I1205-B00-0000	SEAL OIL(19×26×5)	1 油封					
10-2	C1110-B00-0000	FLYWHEEL COMP.	1 飛輪組					
10-3	I4104-12522	WASHER	1 NO:046 平墊圈					
10-4	I4050-12110-0H	NUT FLANGE	1 NO:001 六角帶頭螺帽					
10-5	I3500-06016-0A	SCREW PAN	2 NO:015 圓頭十字螺絲					
10-6	C1200-B00-0000	STARTER MOTOR COMP	1 起動馬達組					
10-6-1	C1220-B00-0000	CARBON BRUSH ASSY.	1 碳刷組					
*10-6-1-1	C1221-B00-0000	POSITIVE CARBON BRUSH	1 正極碳刷					
*10-6-1-2	C1222-B00-0000	NEGATIVE CARBON BRUSH	1 負極碳刷					
10-7	I6001-06020-0H	BOLT,HEXAGON HEAD (M6×20)	2 NO:001六角螺栓					

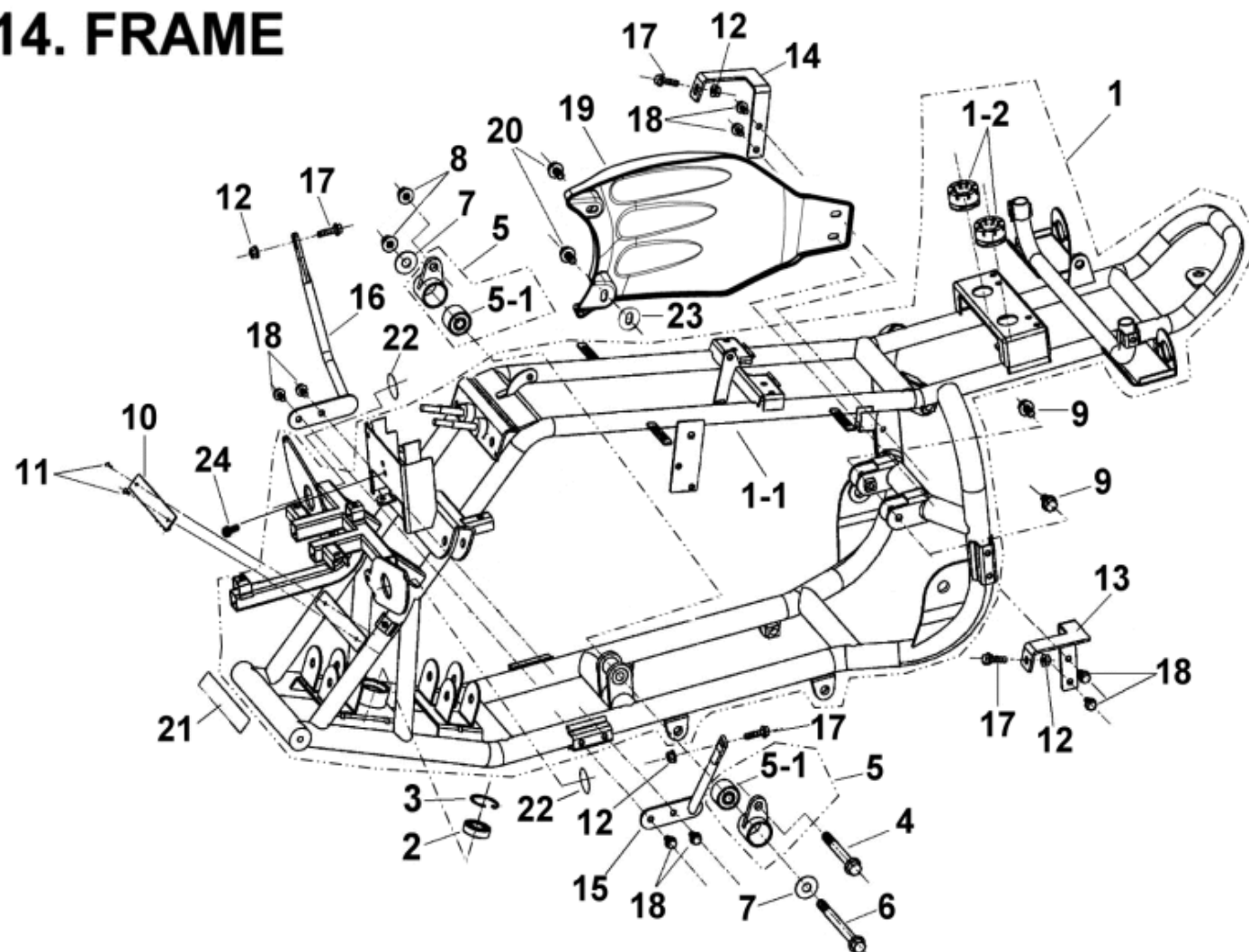


## 13.MUFFLER



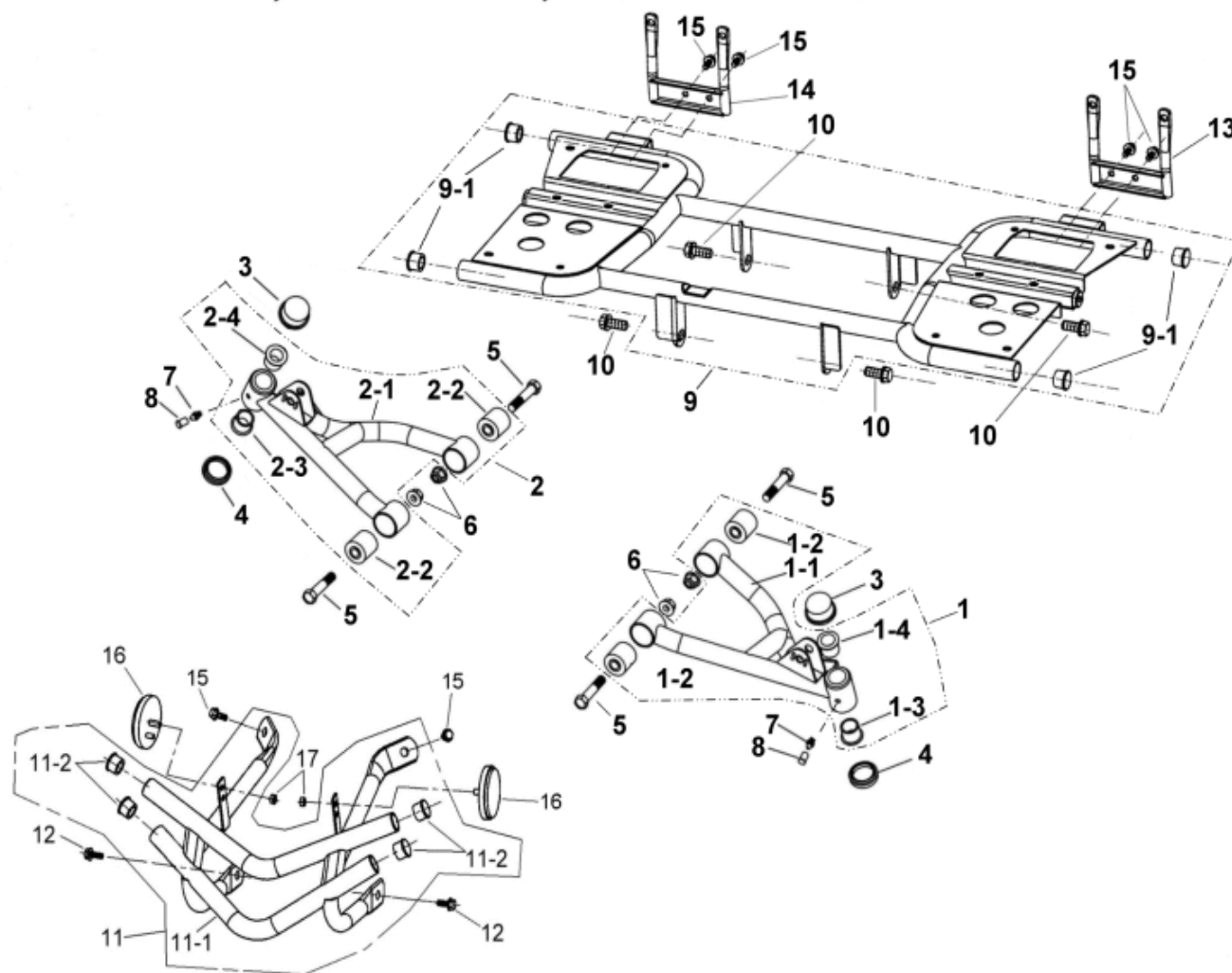
ITEM	PART NO.	NAME	Q'TY 品名	VIN NC COUNTRY
13		MUFFLER ASSY.		U.S U.K H.L C.A A.L
13-1	A830A-9EF0-0000	MUFFLER PIPE ASSY.	1 排氣管總成	N/A N/A
	A830A-9EF9-0000	MUFFLER PIPE ASSY.	1 排氣管總成	N/A
13-1-1	A8303-5EE0-0000	SPARK ARRESTER	1 火花捕集器	N/A N/A
13-1-2	A8304-5EE0-0000	BUFFER RUBBER	1 緩衝橡膠	
13-1-3	A830G-5EE0-0000	SCRAW	1 承窩螺絲	N/A N/A
13-2	I0149-06810	BOLT ,FLANGE (M6×18)	2 凸緣螺栓	
13-3	A8291-5AA0-0000	GASKET (φ34×25.4×4)	1 排氣管墊片	
13-4	I0102-10048	BOLT,FLANGE (M10×48)	1 凸緣螺栓	
13-5	I0149-08016	BOLT,FLANGE (M8×16)	1 凸緣螺栓	

# 14. FRAME



ITEM	PART NO.	NAME	Q'TY	品名	VIN NC COUNTRY
14		FRAME			U.S U.K H.L C.A A.L
14-1	E010A-5EE0-9000	FRAME COMP ASSY.	1	車架總成	
14-1-1	E0100-5EE0-9000	FRAME COMP.	1	車架	
14-1-2	G7212-5EA0-0000	RUBBER DAMPER(φ37×φ13×23)	2	橡膠塊	
14-2	I6100-6002ZZ	BEARING (6002ZZ)	1	軸承	
14-3	I4510-32000	C CLIP	1	C型扣環	
14-4	E0352-5EA0-0000	ENGINE SET BOLT(M10×85)	1	引擎裝置螺栓	
14-5	E0350-5EA0-0000	ENGINE SUSPENSION ASSY.	2	引擎懸吊裝置總成	
14-5-1	E0201-5EA0-0000	BUSH (φ28.1×φ10×27×29)	2	引擎懸吊襯套	
14-6	E0351-5EA0-0000	ENGINE SET BOLT(M10×115)	1	引擎懸吊裝置螺栓	
14-7	I9905-10100	WASHER(φ28×φ11×1.2)	2	墊圈	
14-8	I5612-10200	NUT,HEXAGON CHECK(M10)	2	六角防鬆螺帽	
14-9	I0149-08036-01	BOLT,FLANGE(M8×36)	2	凸緣螺栓	
14-10	E0101-5EA0-0000	FRAME NUMBER PLATE	1	車架號碼牌	N/A
	E0101-5EE4-0000	FRAME NUMBER PLATE	1	車架號碼牌	N/A N/A N/A N/A
14-11	H750A-5BA1-0000	FIX NAIL	2	拉釘	
14-12	I5611-06200-0G	NUT,FLANGE CHECK (M6)	4	凸緣防鬆螺帽	
14-13	E0105-5EE0-0000	LEFT,FIXED PLATE,REAR FENDER	1	後擋泥板左固定片	
14-14	E0106-5EE0-0000	RIGHT,FIXED PLATE,REAR FENDER	1	後擋泥板右固定片	
14-15	E0107-5EE0-0000	LEFT,FIXED PLATE,FRONT FENDER	1	前擋泥板左固定片	
14-16	E0108-5EE0-0000	RIGHT,FIXED PLATE,FRONT FENDER	1	前擋泥板右固定片	
14-17	I0149-06823-01	BOLT,FLANGE (M6×23)	4	凸緣螺栓	
14-18	I0149-06012	BOLT,FLANGE (M6×12)	8	凸緣螺栓	
14-19	D0103-9EF0-0000	FRONT PROTECT COVER	1	前鍊輪防護蓋	
14-20	I0149-08016	BOLT,FLANGE (M8×16)	2	凸緣螺栓	
14-21	F4309-5EA0-0000	STICKER, MFD	1	廠商貼紙	
14-22	H7113-5EE0-0000	STICKER,HEAD LIGHT SEAT	2	頭燈固定座貼紙	N/A N/A N/A N/A
14-23	A830D-9EF0-0000	WASHER,HEAT INSULATION	1	防護蓋隔熱墊圈	
14-24	I0153-06012	SCREW	1	破壞螺絲	

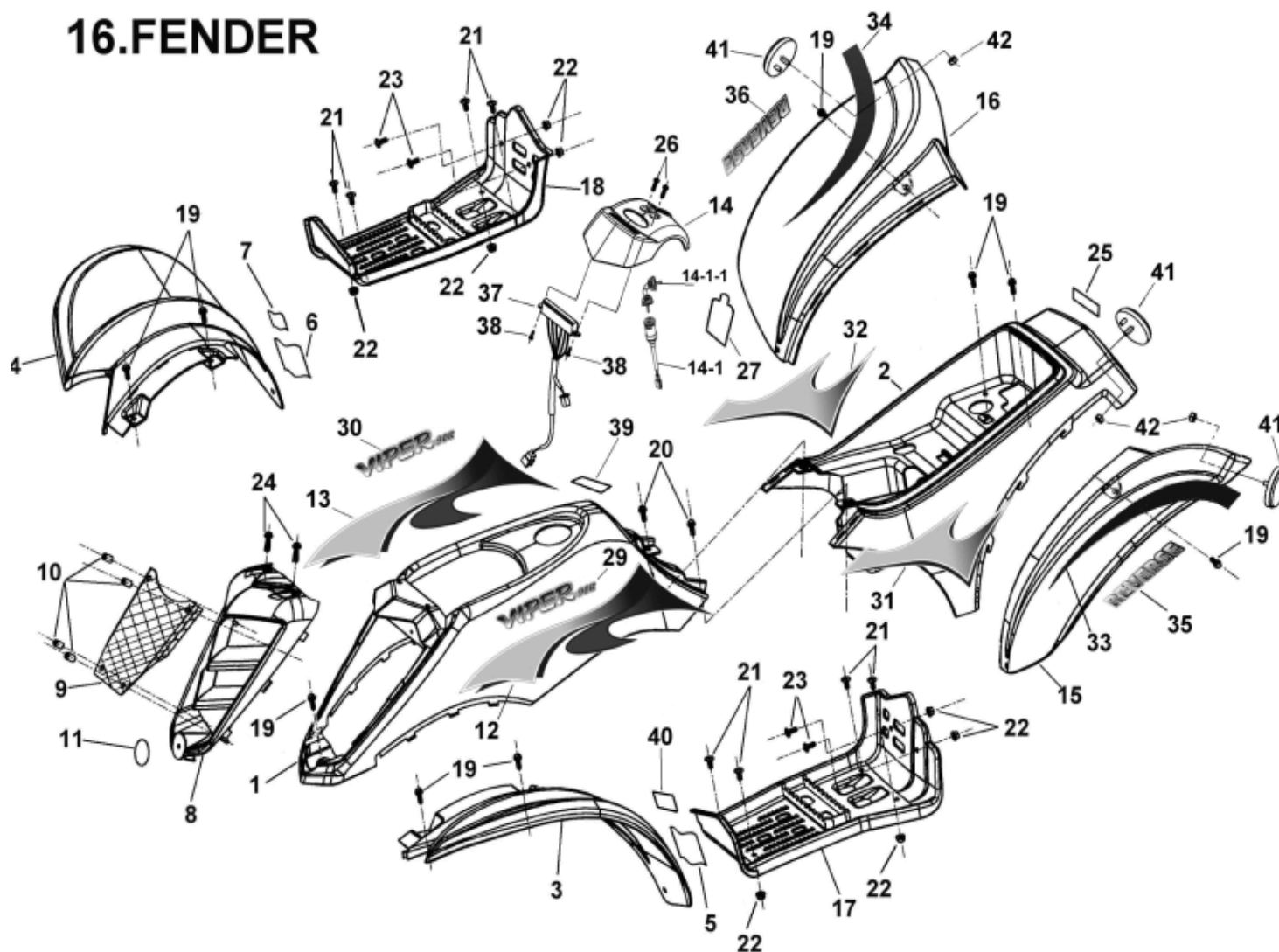
## 15.SWING ARM,FOOTREST,FENDER BAR



ITEM	PART NO.	NAME	Q'TY 品名	VIN NC COUNTRY
15		SWING ARM,FOOTREST,FEND BAR		U.S U.K H.L C.A A.L
15-1	E020A-5EE0-0700	ARM, SUSPENSION, L.H. (SILVER)	1 左A臂組立(銀)	
15-1-1	E0200-5EE0-0700	ARM, SUSPENSION, L.H. (SILVER)	1 左A臂(銀)	
15-1-2	E0201-5EA0-0000	BUSH, ARM SUSPENSION	2 A臂用防震襯墊	
15-1-3	E0206-5EA0-0000	OIL LINER(φ17)	1 含油襯套	
15-1-4	E0207-5EA0-0000	OIL LINER(φ15.5)	1 含油襯套	
15-2	E021A-5EE0-0700	ARM, SUSPENSION, R.H. (SILVER)	1 右A臂組立(銀)	
15-2-1	E0210-5EE0-0700	ARM, SUSPENSION, R.H. (SILVER)	1 右A臂(銀)	
15-2-2	E0201-5EA0-0000	BUSH, ARM SUSPENSION	2 A臂用防震襯墊	
15-2-3	E0206-5EA0-0000	OIL LINER(φ17)	1 含油襯套	
15-2-4	E0207-5EA0-0000	OIL LINER(φ15.5)	1 含油襯套	
15-3	E0202-5EA0-0000	WATERPROOF SEAL	2 防水套	
15-4	E0203-5EA0-0000	DUST SEAT	2 防塵橡膠	
15-5	I0102-10048	PIN HOLE BOLT(M10×48)	4 銷孔螺栓	
15-6	I5611-10200	NUT,FLANGE CHECK(M10)	4 凸緣防鬆螺帽	
15-7	I6600-06000	GREASE VALVE	2 黃油嘴	
15-8	E0209-5EA0-9000	CAP, GREASE VALVE	2 黃油嘴蓋	

ITEM	PART NO.	NAME	Q'TY 品名	VIN NC COUNTRY
				U.S U.K H.L C.A A.L
15-9	E0700-5EE0-9000	FOOTREST BAR ASSY	1 置腳踏桿總成	
15-9-1	E0707-5EE0-0000	RUBBER PLUG	4 管塞	
15-10	I0149-10022	BOLT,FLANGE(M10×22)	4 凸緣螺栓	
15-11	E040A-5EE0-0700	FEND BAR ASSY. FRONT (SILVER)	1 前防護桿總成(銀)	N/A
15-11-1	E0400-5EE0-0700	FEND BAR. FRONT (SILVER)	1 前防護桿(銀)	N/A
	E0400-5EE4-0700	FEND BAR. FRONT (SILVER)	1 前防護桿(銀)	N/A N/A N/A N/A
15-11-2	E0707-5EE0-0000	RUBBER PLUG	4 管塞	
15-12	I0149-08016	BOLT,FLANGE(M8×16)	2 凸緣螺栓	
15-13	E0703-5EE0-0000	FOOTREST REAR BAR (L)	1 左防滑桿	
15-14	E0705-5EE0-0000	FOOTREST REAR BAR ®	1 右防滑桿	
15-15	I0149-06012	BOLT,FLANGE(M6×12)	6 凸緣螺栓	
15-16	C3742-5BA2-0000	CIRCLE REFLECTOR	2 圓形反光片(橘色)	N/A N/A N/A N/A
15-17	I2020-6000	NUT,HEXAGON	2 六角螺帽	N/A N/A N/A N/A

# 16.FENDER



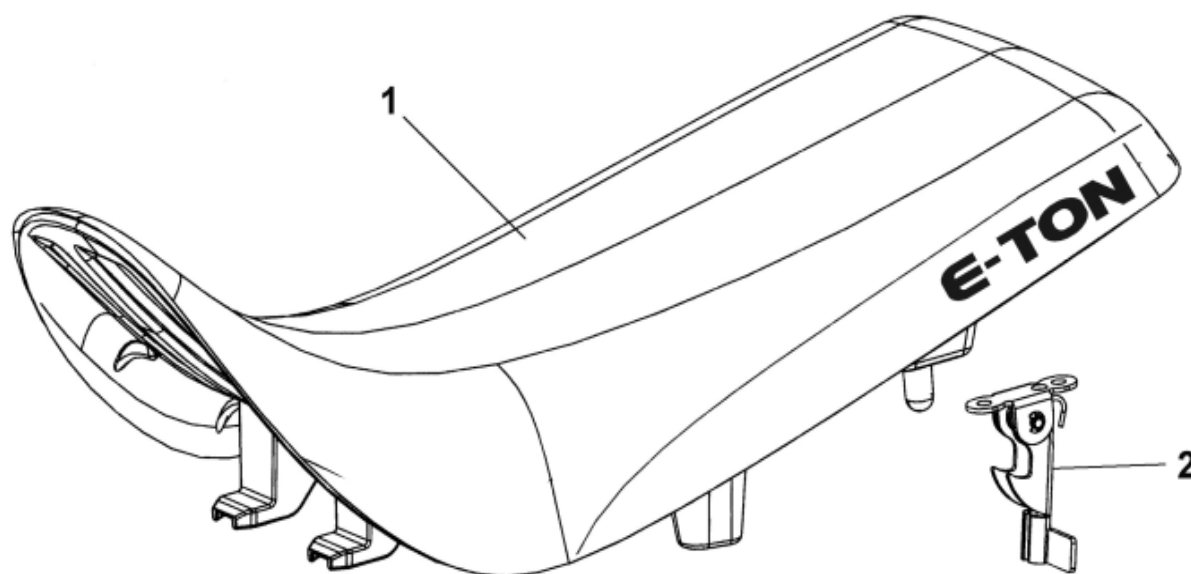


ITEM	PART NO.	NAME	Q'TY	品名	VIN NC COUNTRY
16		FENDER			U.S U.K H.L C.A A.L
16-1	F4300-5EE0-5400	FRONT BODY COVER(BLUE)	1	前車身蓋(藍色)	
	F4300-5EE0-1100	FRONT BODY COVER (YELLOW)	1	前車身蓋(黃色)	
	F4300-5EE0-4200	FRONT BODY COVER(RED)	1	前車身蓋(紅色)	
	F4300-5EE0-0800	FRONT BODY COVER(BLACK)	1	前車身蓋(黑色)	
16-2	H3500-5EE0-5400	REAR BODY COVER (BLUE)	1	後車身蓋(藍色)	
	H3500-5EE0-1100	REAR BODY COVER (YELLOW)	1	後車身蓋(黃色)	
	H3500-5EE0-4200	REAR BODY COVER (RED)	1	後車身蓋(紅色)	
	H3500-5EE0-0800	REAR BODY COVER (BLACK)	1	後車身蓋(黑色)	
16-3	F3520-5EE0-5400	FRONT FENDER (L) (BLUE)	1	左前擋泥板(藍色)	
	F3520-5EE0-1100	FRONT FENDER (L) (YELLOW)	1	左前擋泥板(黃色)	
	F3520-5EE0-4200	FRONT FENDER (L) (RED)	1	左前擋泥板(紅色)	
	F3520-5EE0-0800	FRONT FENDER (L) (BLACK)	1	左前擋泥板(黑色)	
16-4	F3620-5EE0-5400	FRONT FENDER (R) (BLUE)	1	右前擋泥板(藍色)	
	F3620-5EE0-1100	FRONT FENDER (R) (YELLOW)	1	右前擋泥板(黃色)	
	F3620-5EE0-4200	FRONT FENDER (R) (RED)	1	右前擋泥板(紅色)	
	F3620-5EE0-0800	FRONT FENDER (R) (BLACK)	1	右前擋泥板(黑色)	
16-5	H7101-9FA0-9000	STICKER,WARNING(PASSENGER)	1	警告貼紙(左前)	
	H7103-5EA1-0000	STICKER,WARNING(TIRE PSI)	1	胎壓警告貼紙	N/A
16-6	H7102-9FA0-9000	STICKER, WARNING (Y12)	1	警告貼紙(右前)	N/A N/A
	F4307-5EA0-0000	STICKER, WARNING (Y12)	1	警告貼紙(Y12)	N/A
16-7	H7102-5EA1-0000	STICKER, CE	1	CE貼紙	N/A
16-8	F4301-5EE0-5400	FRONT CENTER COVER (BLUE)	1	前中心蓋(藍色)	
	F4301-5EE0-1100	FRONT CENTER COVER(YELLOW)	1	前中心蓋(黃色)	
	F4301-5EE0-4200	FRONT CENTER COVER (RED)	1	前中心蓋(紅色)	
	F4301-5EE0-0800	FRONT CENTER COVER (BLACK)	1	前中心蓋(黑色)	N/A N/A

ITEM	PART NO.	NAME	Q'TY	品名	VIN NC COUNTRY
16		FENDER			U.S U.K H.L C.A A.L
16-9	E0415-5EE0-0000	FILTER NET	1	擴張網	
16-10	E0417-5EE0-0000	FILTER NET PLUE	4	擴張網固定塞	
16-11	H7107-5EB0-0000	EMBLEM, LOGO(SILVER)	1	商標銘牌(銀)	
16-12	H7124-5EE0-1100	FRONT BODY STICKER (YELLOW)	1	前車身貼紙(左)	
	H7124-5EE0-4200	FRONT BODY STICKER (RED) (L)	1	前車身貼紙(左)	
16-13	H7125-5EE0-1100	FRONT BODY STICKER (YELLOW)	1	前車身貼紙(右)	
	H7125-5EE0-4200	FRONT BODY STICKER (RED)(R)	1	前車身貼紙(右)	
16-14	E3205-9EF0-0800	COVER,HANDLE BAR(BLACK)	1	手把蓋(黑色)	
16-14	E3205-9EF0-1100	COVER,HANDLE BAR(YELLOW)	1	手把蓋(黃色)	
	E3205-9EF0-4200	COVER,HANDLE BAR(RED)	1	手把蓋(紅色)	
	E3205-9EF0-5400	COVER,HANDLE BAR(BLUE)	1	手把蓋(藍色)	
16-14-1	C5010-9FA0-0000	MAIN SWITCH ASSY.	1	主開關總成	
16-14-1-1	C5013-9FA0-0000	MATERIAL KEK	1	鑰匙(素材)	
16-15	H3720-5EE0-5400	REAR FENDER (L)(BLUE)	1	左後擋泥板(藍)	
	H3720-5EE0-1100	REAR FENDER (L)(YELLOW)	1	左後擋泥板(黃)	
	H3720-5EE0-4200	REAR FENDER (L)(RED)	1	左後擋泥板(紅)	
	H3720-5EE0-0800	REAR FENDER (L)(BLACK)	1	左後擋泥板(黑)	
16-16	H3820-5EE0-5400	REAR FENDER (R)(BLUE)	1	右後擋泥板(藍)	
	H3820-5EE0-1100	REAR FENDER (R)(YELLOW)	1	右後擋泥板(黃)	
16-16	H3820-5EE0-4200	REAR FENDER (R)(RED)	1	右後擋泥板(紅)	
	H3820-5EE0-0800	REAR FENDER (R)(BLACK)	1	右後擋泥板(黑)	
16-17	H3520-5EE0-0000	FOOTREST,(L)	1	左置腳踏板	
16-18	H3620-5EE0-0000	FOOTREST,(R)	1	右置腳踏板	
16-19	I0119-06802	BLOT,HEXANGOR HEAD(M6×16)	9	六角套頭螺栓	
16-20	I0119-06821	BLOT,HEXANGOR HEAD(M6×20)	2	六角套頭螺栓	
16-21	I8310-06020-01	BUTTON HEAD SCREW	8	扁圓頭螺絲	

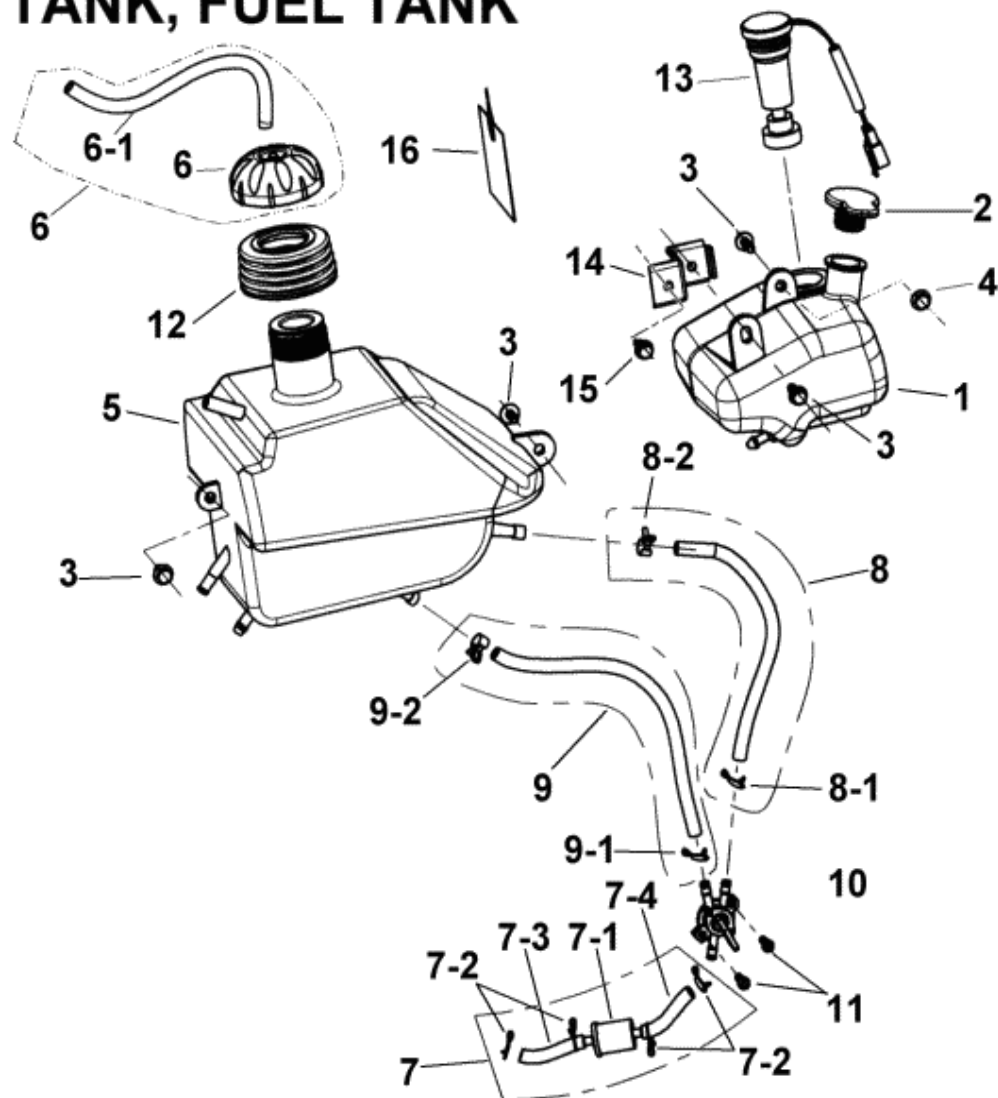
ITEM	PART NO.	NAME	Q'TY	品名	VIN NC COUNTRY
16		FENDER			U.S U.K H.L C.A A.L
16-22	I5611-06200-0G	NUT,SELF LOCK	8	自鎖螺帽	
16-23	E0117-9EA0-0000	BUTTON HEAD SCREW(M6×18)	4	扁圓頭螺絲	
16-24	I8310-FIA0-0000	PLASTIC SCREW	2	塑膠螺絲	
16-25	H7106-5ED0-0000	WARNING STICKER, MUFFLER	1	排氣管警告貼紙(英文)	
16-26	I3500-06012-1A	SCREW,PAN	2	圓頭十字螺絲	
16-27	H7101-5EA1-0000	STICKER,WARNING	1	CE警告貼紙	N/A
16-28		CANCEL,PREARRANGE		取消保留	
16-29	H7103-9EF0-0000	STICKER, VIPER-90R (L)	1	車型貼紙(左)	
16-30	H7104-9EF0-0000	STICKER, VIPER-90R ( R)	1	車型貼紙(右)	
16-31	H7128-5EE0-1100	STICKER,REAR BODY (YELLOW))	1	後車身貼紙(左)	
	H7128-5EE0-4200	STICKER,REAR BODY (RED)(L)	1	後車身貼紙(左)	
16-32	H7129-5EE0-1100	STICKER,REAR BODY (YELLOW))	1	後車身貼紙(右)	
	H7129-5EE0-4200	STICKER,REAR BODY (RED)(R)	1	後車身貼紙(右)	
16-33	H7126-5EE0-0000	STICKER,REAR FENDER(L)	1	後擋泥板貼紙(左)	
16-34	H7127-5EE0-0000	STICKER,REAR FENDER(R)	1	後擋泥板貼紙(右)	
16-35	H7131-9EF0-0000	STICKER,REVERSE (L)	1	倒檔貼紙(左)	
16-36	H7132-9EF0-0000	STICKER,REVERSE (R)	1	倒檔貼紙(右)	
16-37	C7202-9EF0-0000	FUEL METER ASSY.	1	顯示儀表	
16-38	I7707-04016	SELF-TAPPING SCREW	2	自攻螺絲	
16-39	H7129-9EF0-0000	STICKER,INDICATE GEAR	1	排擋指示貼紙	
16-40	H7142-5EE0-0000	WARNING STICKER,VEHICLE SUIT	1	車輛適用警告貼紙	N/A N/A N/A N/A
16-41	C3743-5BA2-0000	CIRCLE REFLECTOR,RDE(DOT)	3	圓形反光片-紅色(DOT)	N/A N/A N/A N/A
16-42	I2020-60000	NUT, HEXAGON	3	六角螺帽	N/A N/A N/A N/A

## 17. SEAT



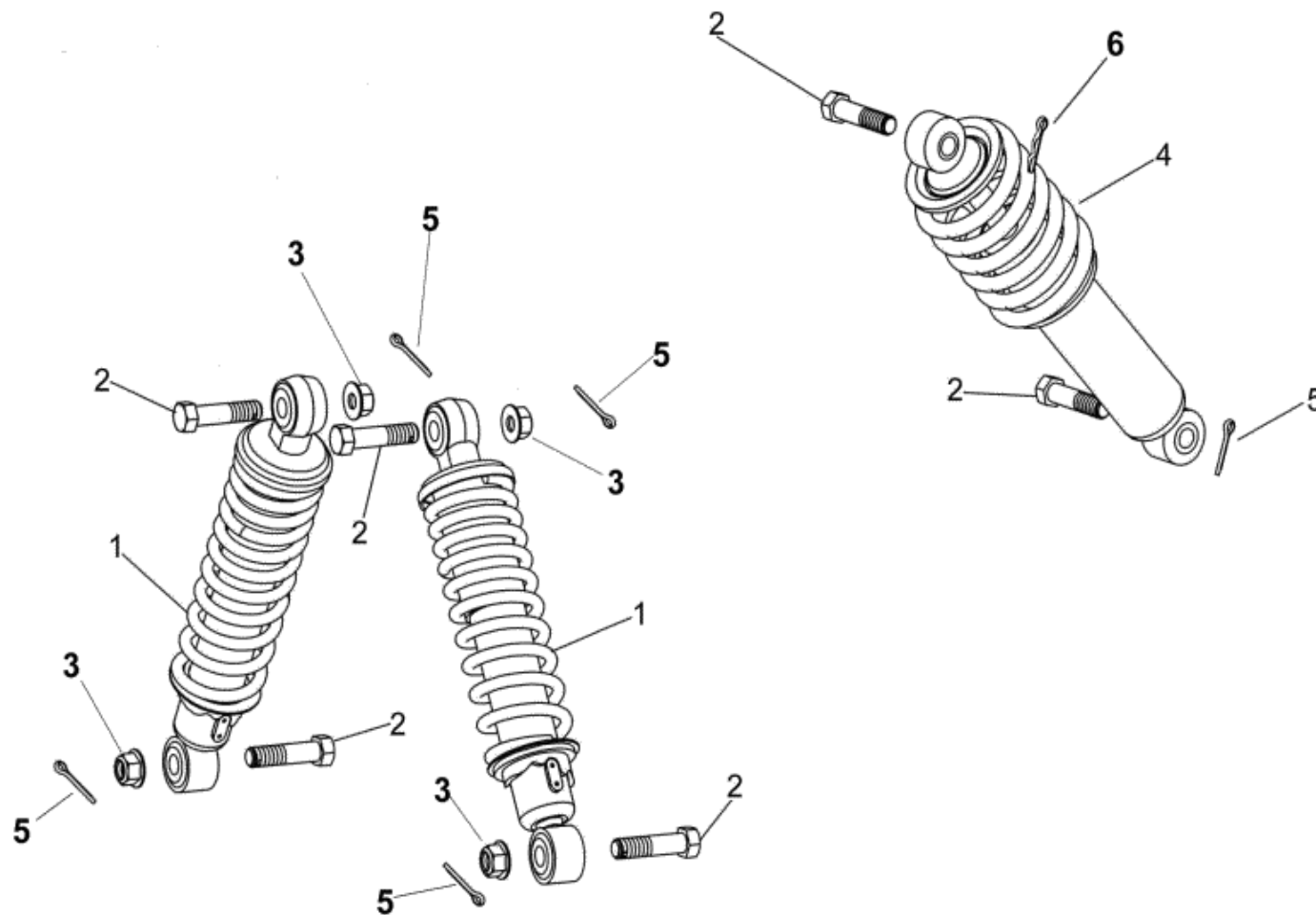
ITEM	PART NO.	NAME	Q'TY	品名	VIN NC COUNTRY
17		SEAT		座墊	U.S U.K H.L C.A A.L
17-1	G7200-5EE0-1100	SEAT ASSY. (BLACK/YELLOW)	1	座墊總成(黑/黃)	
	G7200-5EE0-4200	SEAT ASSY.(BLACK/RED)	1	座墊總成(黑/紅)	
17-2	G7201-9ED0-0000	SEAT FIXER,ASSY.	1	座墊扣總成	

## 18. OIL TANK, FUEL TANK



ITEM	PART NO.	NAME	Q'TY 品名	VIN NC COUNTRY
18		FUEL TANK , OIL TANK	汽油箱, 機油箱	U.S U.K H.L C.A A.L
18-1	E5100-9EF0-0000	OIL TANK (PMX)	1 機油箱	
18-2	E5105-5EA0-0000	OIL TANK CAP	1 機油箱蓋	
18-3	I0119-06821	BOLT,HEXAGON HEAD(M6×20)	4 六角套頭螺栓	
18-4	I2020-60000	NUT,HEXAGON	1 六角螺帽	
18-5	A7500-5EE0-0000	FUEL TANK ASSY.	1 汽油箱總成	
18-6	A762A-5EA0-0000	FUEL TANK CAP ASSY.	1 汽油箱蓋總成	
18-6-1	A7620-5EA0-0000	FUEL TANK CAP	1 汽油箱蓋	
18-6-2	A7621-9FA0-0000	RESPIRATORY TUBE	1 油箱呼吸管	
18-7	A7510-5EA0-1000	FUEL FILTER ASSY.	1 汽油濾清器總成	
18-7-1	A7519-FIA0-1000	FILTER COMP FUEL	1 汽油濾清器	
18-7-2	A7516-5EA0-0000	CLIP(A)	4 汽油管止夾A	
18-7-3	A7514-5EA0-0000	FUEL TUBE (A)	1 汽油濾清器油管A	
18-7-4	A7515-5EA0-0000	FUEL TUBE (B)	1 汽油濾清器油管B	
18-8	A7501-5EE0-0000	FUEL TUBE	1 汽油管	
18-8-1	A7516-5EA0-0000	CLIP(A)	1 汽油管止夾A	
18-8-2	A7517-5EA0-0000	CLIP(B)	1 汽油管止夾B	
18-9	A7502-5EE0-0000	SPARE TUBE	1 備用油管	
18-9-1	A7516-5EA0-0000	CLIP(A)	1 汽油管止夾A	
18-9-2	A7517-5EA0-0000	CLIP(B)	1 汽油管止夾B	
18-10	A7520-5EA0-0000	MANUAL FUEL CUP ASSY.	1 油開關組總成	
18-11	I8506-05016	SCREW,PAN HEAD(M5×16)	2 盤頭螺絲	
18-12	A7622-5EB0-0000	RUBBER PAD, FUEL TANK CAP	1 汽油箱蓋橡膠墊	
18-13	C5410-5EE0-0000	OIL TANK BUOY.	1 機油箱浮筒	
18-14	A1251-9EF0-0000	BRACKET,OIL TANK	1 機油箱固定板	
18-15	I8556-06016	SCREW, PAN HEAD (M6×16)	1 盤頭螺絲附墊圈	
18-16	H7503-5EG0-0000	PREMIX FUEL NOTICE TAG	1 首次加油注意標籤	

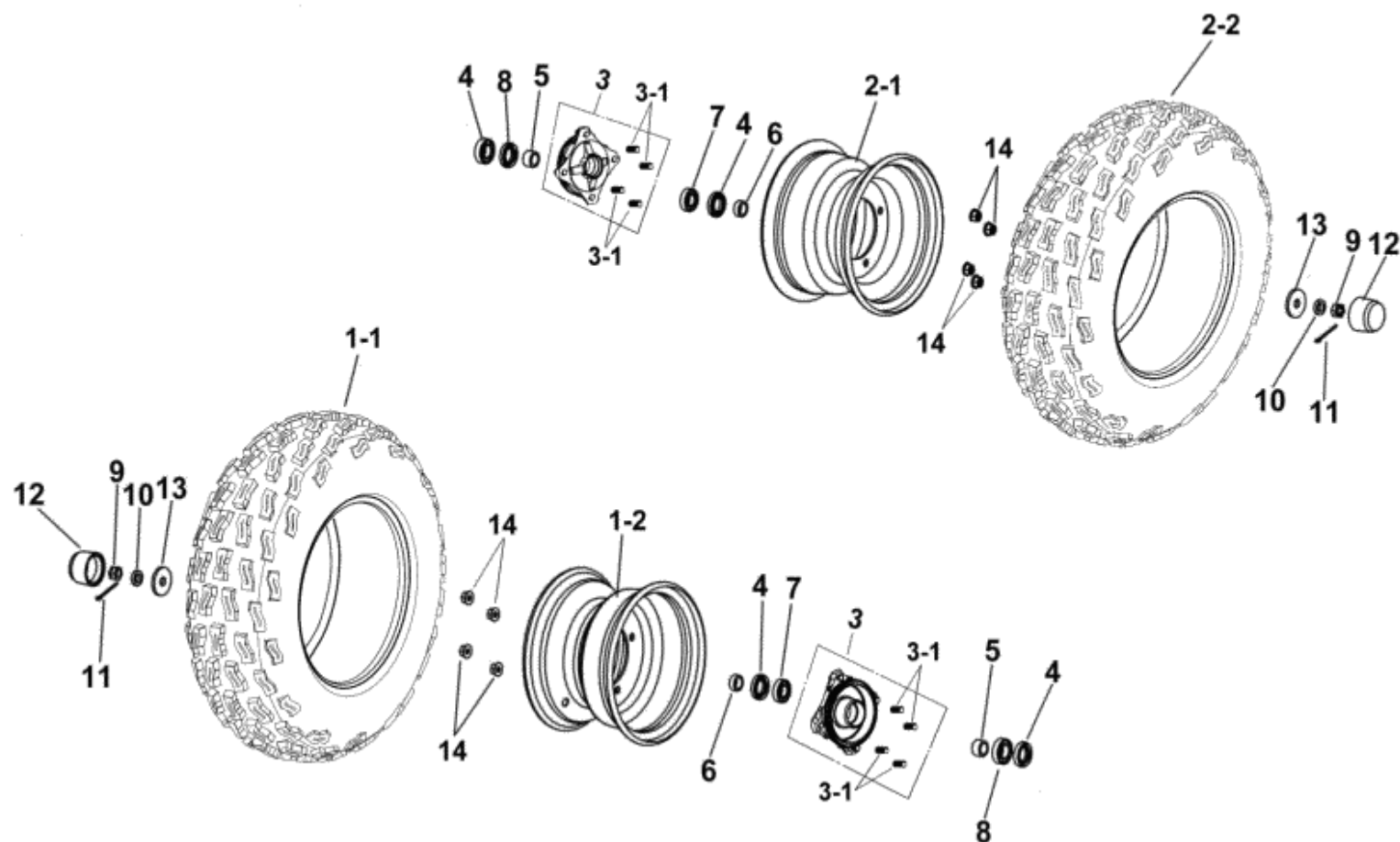
## 19. SUSPENSION





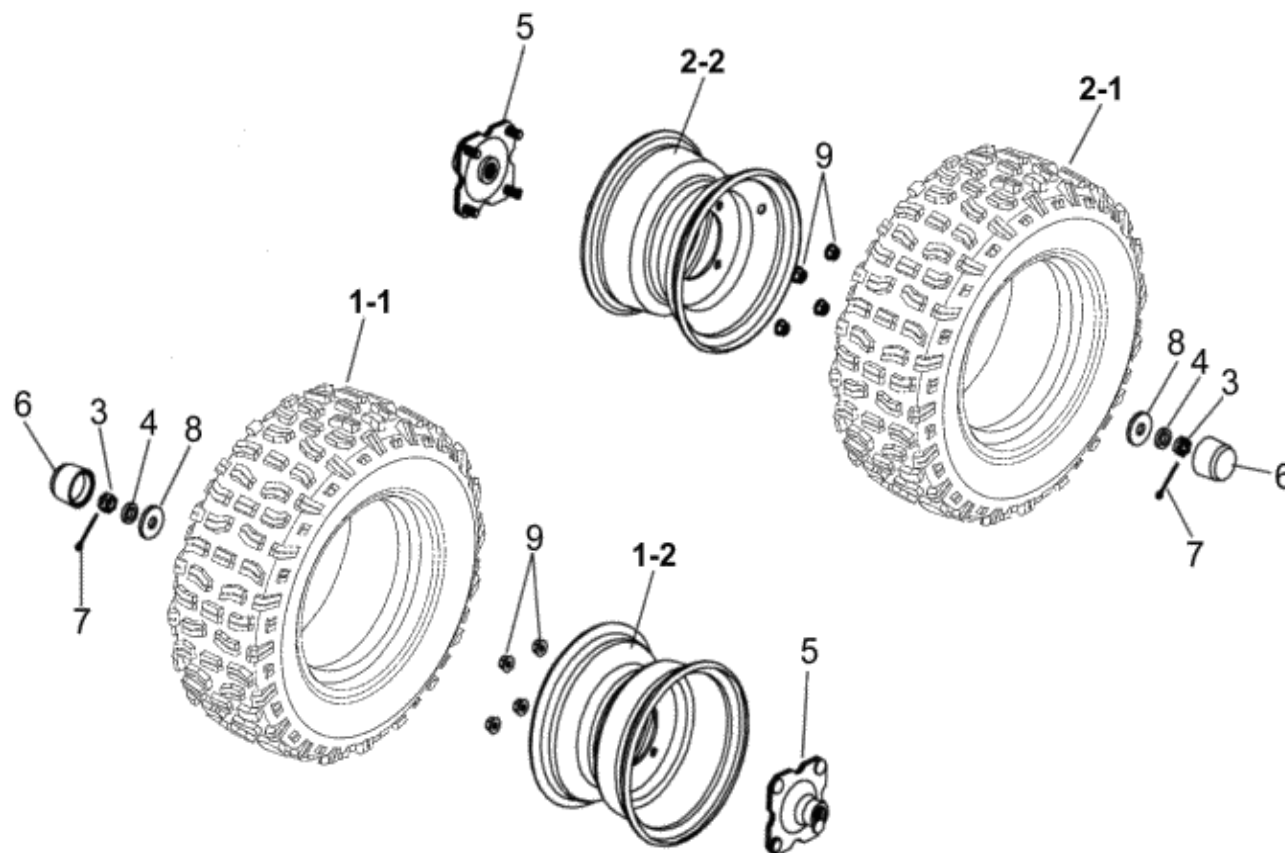
ITEM	PART NO.	NAME	Q'TY 品名	VIN NC COUNTRY
19		SUSPENSION		U.S U.K H.L C.A A.L
19-1	E1105-5EE0-9700	SUSPENSION, FRONT (SILVER)	2 前避震器(銀)	
19-2	I0102-10040	PIN HOLE BOLT(M10×40)	6 銷孔螺栓	
19-3	I5701-10500	NUT(M10)	4 螺帽	
19-4	E2400-5EE0-0000	SUSPENSION, REAR	1 後避震器	
19-5	I9900-25019	COTTER PIN	5 開口銷	
19-6	I0468-12006	CLIP	1 B型銷	

## 20. FRONT WHEEL



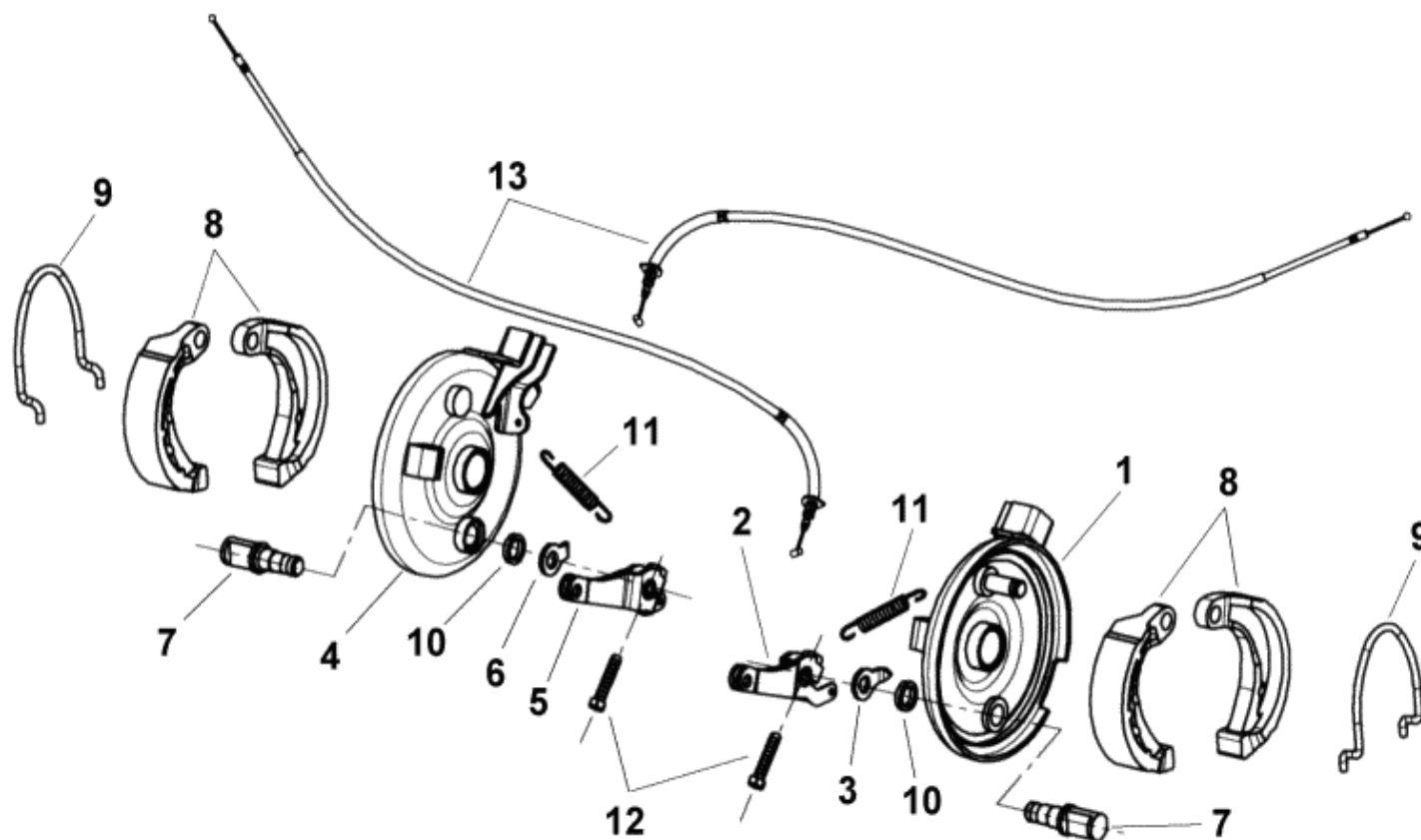
ITEM	PART NO.	NAME	Q'TY	品名	VIN NC COUNTRY
20		FRONT WHEEL			U.S U.K H.L C.A A.L
20-1	D471A-9EE0-0000	FRONT WHEEL ASSY.,LEFT(18×7-8	1	左前輪胎總成	
20-1-1	D4710-9EE0-0000	FRONT WHEEL,LEFT(18×7-8)	1	輪胎	
20-1-2	D4601-5EB0-0000	WHEEL RIM	1	輪圈	
20-2	D471B-9EE0-0000	FRONT WHEEL ASSY.,RIGHT(18×7-	1	右前輪胎總成	
20-2-1	D4601-5EB0-0000	WHEEL RIM	1	輪圈	
20-2-2	D4710-9EE0-0000	FRONT WHEEL,LEFT(18×7-8)	1	輪胎	
20-3	D4610-9EA0-0000	BRAKE DRUM, FRONT	2	前煞車鼓	
20-3-1	D4612-9EA0-0000	BOLT,STUD	8	雙頭螺栓	
20-4	I3102-5AC0-0000	OIL SEAL(φ22×φ35×7)	4	油封	
20-5	D4620-5EA0-0000	INNER SPACER(ψ15×ψ21.7×15)	2	內定距套	
20-6	D4621-5EA0-0000	OUTER SPACER (ψ15×ψ21.7×10)	2	外定距套	
20-7	I6100-6002LLU	BEARING(6002LLU)	2	軸承	
20-8	I6100-6003LLU	BEARING(6003LLU)	2	軸承	
20-9	I5500-12000	CASTLE NUT(M12)	2	城堡螺帽	
20-10	I3000-13000-0C	WASHER(ψ13×φ20×2t)	2	墊圈	
20-11	I4201-46325	COTTER PIN	2	開口銷	
20-12	D4609-5EA0-0000	RUBBER CAP	2	橡膠套	
20-13	D4608-5EA0-0000	FRONT WHEEL SHAFT WASHER	2	前輪軸墊片	
20-14	D4611-9EA0-0000	NUT,FLANGE CHECK (M10)	8	凸緣防鬆螺帽	

## 21. REAR WHEEL



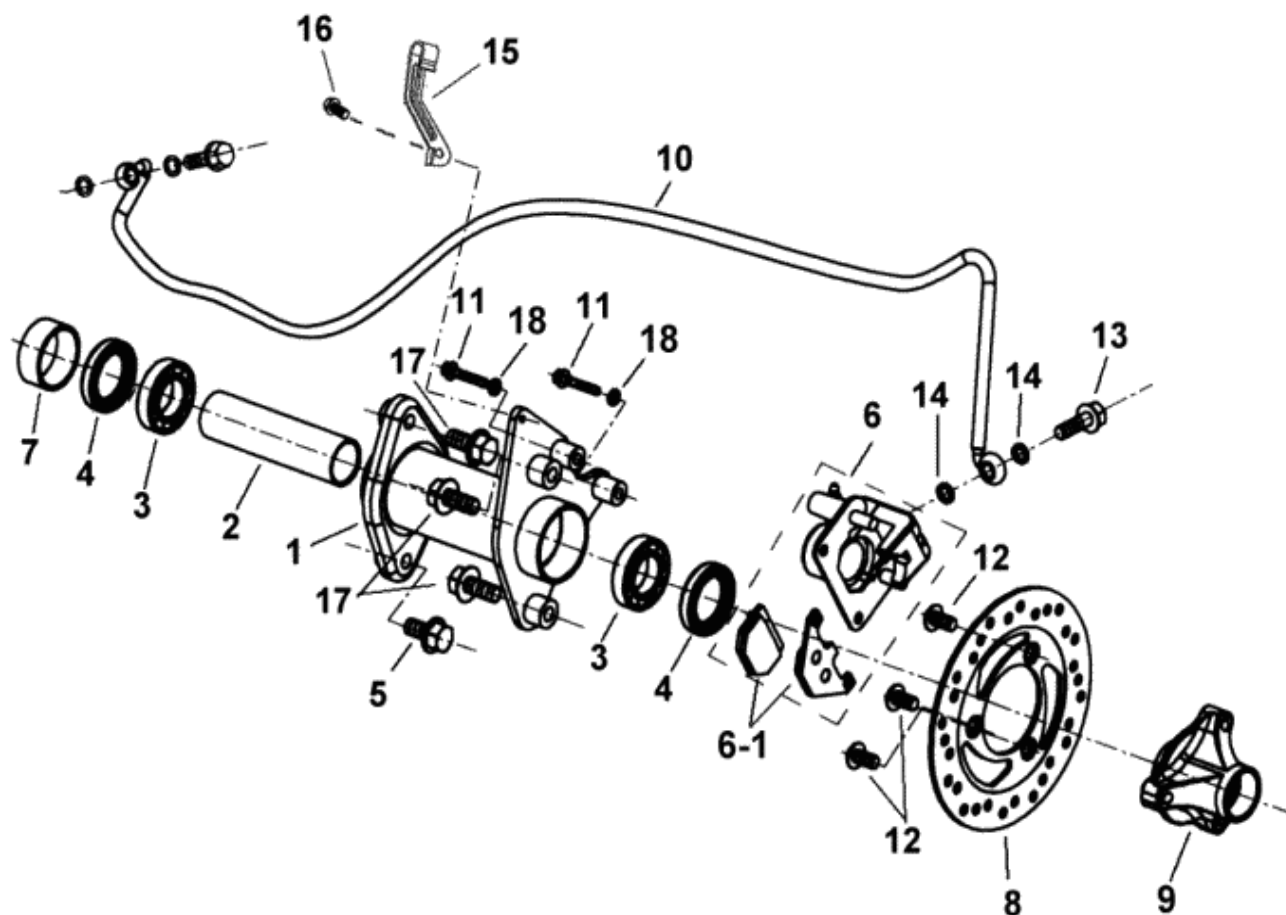
ITEM	PART NO.	NAME	Q'TY	品名	VIN NC COUNTRY
21		REAR WHEEL			U.S U.K H.L C.A A.L
21-1	D471C-9EE0-0000	REAR WHELL ASSY.,LEFT(18×9-8)	1	左後輪胎總成	
21-1-1	D4720-9EE0-0000	WHELL LEFT(18×9-8)	1	輪胎	
21-1-2	D4601-5FA0-0000	WHEEL RIM	1	輪圈	
21-2	D471D-9EE0-0000	REAR WHELL ASSY.,RIGHT(18×9-8)	1	右後輪胎總成	
21-2-1	D4720-9EE0-0000	WHELL LEFT(18×9-8)	1	輪胎	
21-2-2	D4601-5FA0-0000	WHEEL RIM	1	輪圈	
21-3	I5500-14000	CASTLE NUT(M14)	2	城堡螺帽	
21-4	I9905-14100	WASHER(ψ14×5t)	2	墊圈	
21-5	D2705-9EA0-1000	SHAFT CONNECTER WITH BOLTS	2	後軸聯結器	
21-6	D4609-5EA0-0000	RUBBER COVER	2	橡膠套	
21-7	I4201-46325	COTTER PIN	2	開口銷	
21-8	D2309-5EA0-0000	WHEEL AXLE WASHER, REAR (ψ40×ψ14×4.5t)	2	後輪軸墊片	
21-9	D4611-9EA0-0000	NUT,FLANGE CHECK(M10)	8	凸緣防鬆螺帽	

## 22. FRONT BRAKE



ITEM	PART NO.	NAME	Q'TY	品名	VIN NC COUNTRY
22		FRONT BRAKE		前煞車系統	U.S U.K H.L C.A A.L
22-1	D5351-5EA0-0000	FRONT BRAKE PANEL COMP., LEF	1	前煞車盤(左)	
22-2	D5410-5EA0-0000	FRONT BRAKE ARM, LEFT	1	前煞車搖臂(左)	
22-3	D5145-5EA0-0000	FRONT BRAKE INDICATOR,LEFT	1	前煞車指示器(左)	
22-4	D5352-5EA0-0000	FRONT BRAKE PANEL COMP., RIGHT	1	前煞車盤(右)	
22-5	D5411-5EA0-0000	FRONT BRAKE ARM,RIGHT	1	前煞車搖臂(右)	
22-6	D5146-5EA0-0000	FRONT BRAKE INDICATOR,RIGHT	1	前煞車指示器(右)	
22-7	D5141-5EA0-0000	FRONT BRAKE ARM CAM	2	前搖臂凸輪	
22-8	D5120-5EA0-0000	FRONT BRAKE SHOE COMP. (ψ85)	2	前煞車蹄片組	
22-9	D5125-5EA0-0000	SPRING	2	彈簧	
22-10	D5149-5EA0-0000	FELT SEAL	2	羊毛氈	
22-11	D5419-5EA0-0000	FRONT RETURN SPRING	2	前復歸彈簧	
22-12	I0020-05024	BOLT(M5×24)	2	螺栓	
22-13	E5450-5EE0-0000	CABLE, FRONT BRAKE ASSY	2	前煞車線總成	

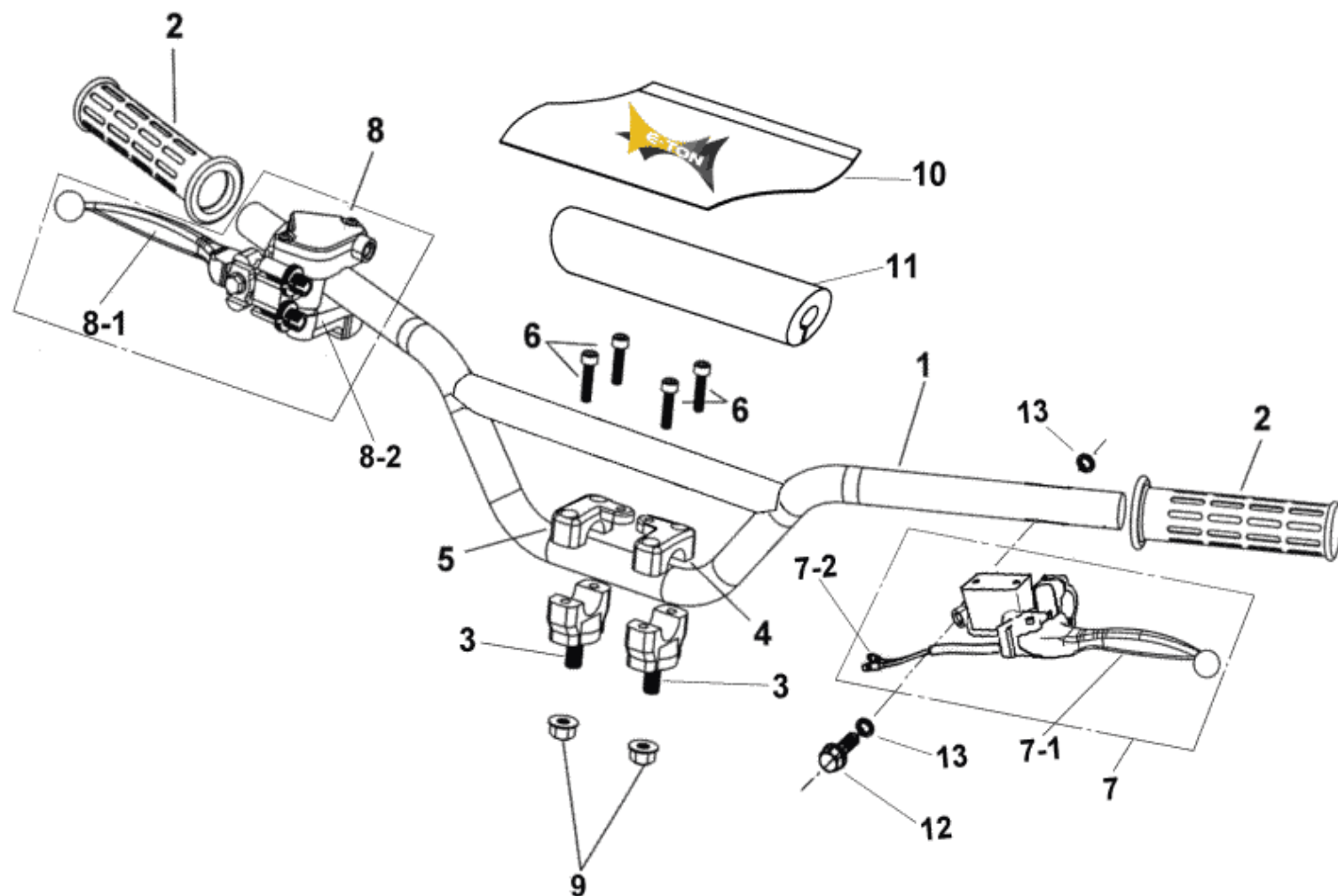
## 23. REAR BRAKE





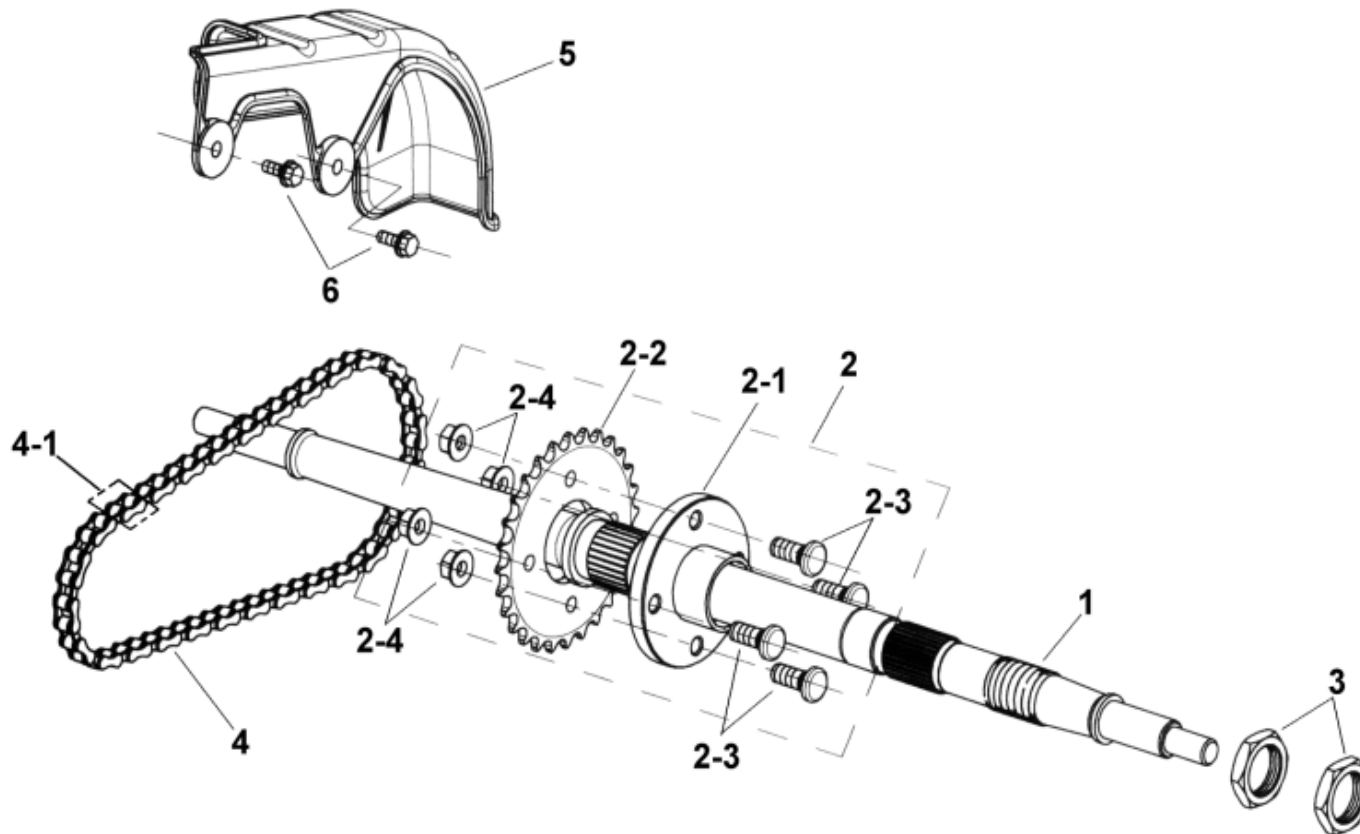
ITEM	PART NO.	NAME	Q'TY	品名	VIN NC COUNTRY
23		REAR BRAKE			U.S U.K H.L C.A A.L
23-1	D2310-5EE0-0000	BEARING SEAT ASSY., REAR WHEEL AXLE	1	後輪軸軸承座總成	
23-2	D2311-5EA0-0000	SPACER	1	隔筒	
23-3	I6100-6006ZZ	BEARING(6006ZZ)	2	軸承	
23-4	D2313-9EA0-0000	OIL SEAL	2	油封	
23-5	I0141-12025-01	SCREW FLANGE (M12×25) (SUS)	1	凸緣螺絲(鋼質)	
23-6	G7130-5EE0-0000	BRAKE CALLIPER	1	煞車卡鉗	
23-6-1	G7131-5EE0-0000	BRAKE SHOE COMP	1	煞車蹄片	
23-7	D0114-9EF0-0000	SPACER	1	隔筒	
23-8	D3520-FIA0-0000	BRAKE DISK	1	煞車盤	
23-9	D3251-5EE0-0000	BRAKE DISK MOUNTING SEAT	1	煞車盤固定座	
23-10	D3210-5EE0-0000	BRAKE OIL TUBE	1	後煞車油管	
23-11	I0105-08035	BOLT,FLANGE(M8×35)	2	凸緣螺栓	
23-12	I0110-10811	BOLT,ROUND HEAD(M10)	3	煞車盤圓頭螺栓	
23-13	I0401-10034	UNION BOLT,BRAKE HOSE	1	煞車油管通油螺栓	
23-14	I0201-10118	WASHER,PLATE	2	銅墊圈	
23-15	G7111-BCA0-0000	BRAKE FUEL TUBE, CLIP	1	煞車油管夾	
23-16	I0149-06012	BOLT,FLANGE(M6×12)	1	凸緣螺栓	
23-17	I0141-12028-01	BOLT,FLANGE(M12×28)	3	凸緣螺栓	
23-18	I9901-08100	SPRING WASHER	2	彈簧墊片	

## 24. HANDLE BAR



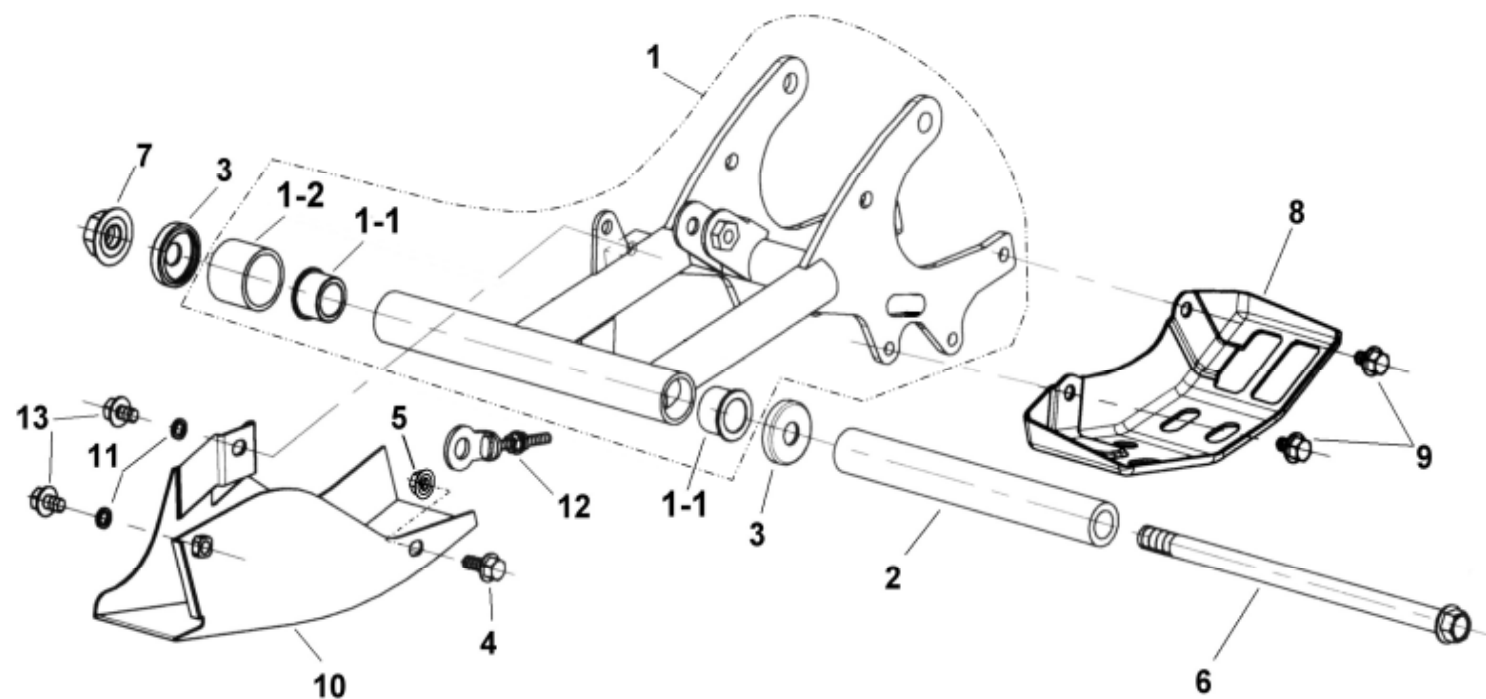
ITEM	PART NO.	NAME	Q'TY 品名	VIN NC COUNTRY
24		HANDLE BAR		U.S U.K H.L C.A A.L
24-1	E3100-9EF0-0000	HANDLE BAR ASSY.	1 手把總成	
24-2	E3166-5EA0-0000	GRIP HANDLE	2 握把	
24-3	E3112-5EA0-0000	HANDLE BAR CLAMP, BOTTOM	2 手把固定座(底座)	
24-4	E3110-5EA0-0000	HANDLE BAR CLAMP, CAP, LEFT	1 手把固定座(上蓋,左)	
24-5	E3111-5EA0-0000	HANDLE BAR CLAMP, CAP, RIGHT	1 手把固定座(上蓋,右)	
24-6	I0050-06025	SCREW, SOCKET (M6×25)	4 內六角螺絲	
24-7	D3200-5EG0-0000	BRAKE MASTER CYLINDER,LEFT	1 左煞車主缸(φ11)	
24-7-1	D3201-5EG0-0000	LEVER,LEFT	1 左拉桿	
24-7-2	D3202-FIA0-0000	BRAKE SWITCH ASSY.	1 煞車開關	
24-8	E3180-FIA0-0000	LEVER ASSY., RIGHT	1 右拉桿加油座總成	
24-8-1	E3181-5FA0-0000	LEVER SET,RIGHT	1 右拉桿組	
24-8-2	E319A-5FA0-0000	LEVER ACCELERATE	1 加油座拉桿	
24-9	I5611-10200	NUT,FLANGE CHECK (M10)	2 凸緣防鬆螺帽	
24-10	E3101-5EE0-1000	HANDLE BAR PROTECT (W175×225L×290L)	1 手把護套外套	
24-11	E3102-5EE0-1000	HANDLE BAR PROTECT FOAM(φ19×φ48×225L×285L)	1 手把護套筒(海綿)	
24-12	I0401-10034	UNION BOLT,BRAKE HOSE	1 煞車油管通油螺栓	
24-13	I0201-10118	WASHER,PLATE	2 銅墊圈	

## 25. REAR WHEEL AXLE



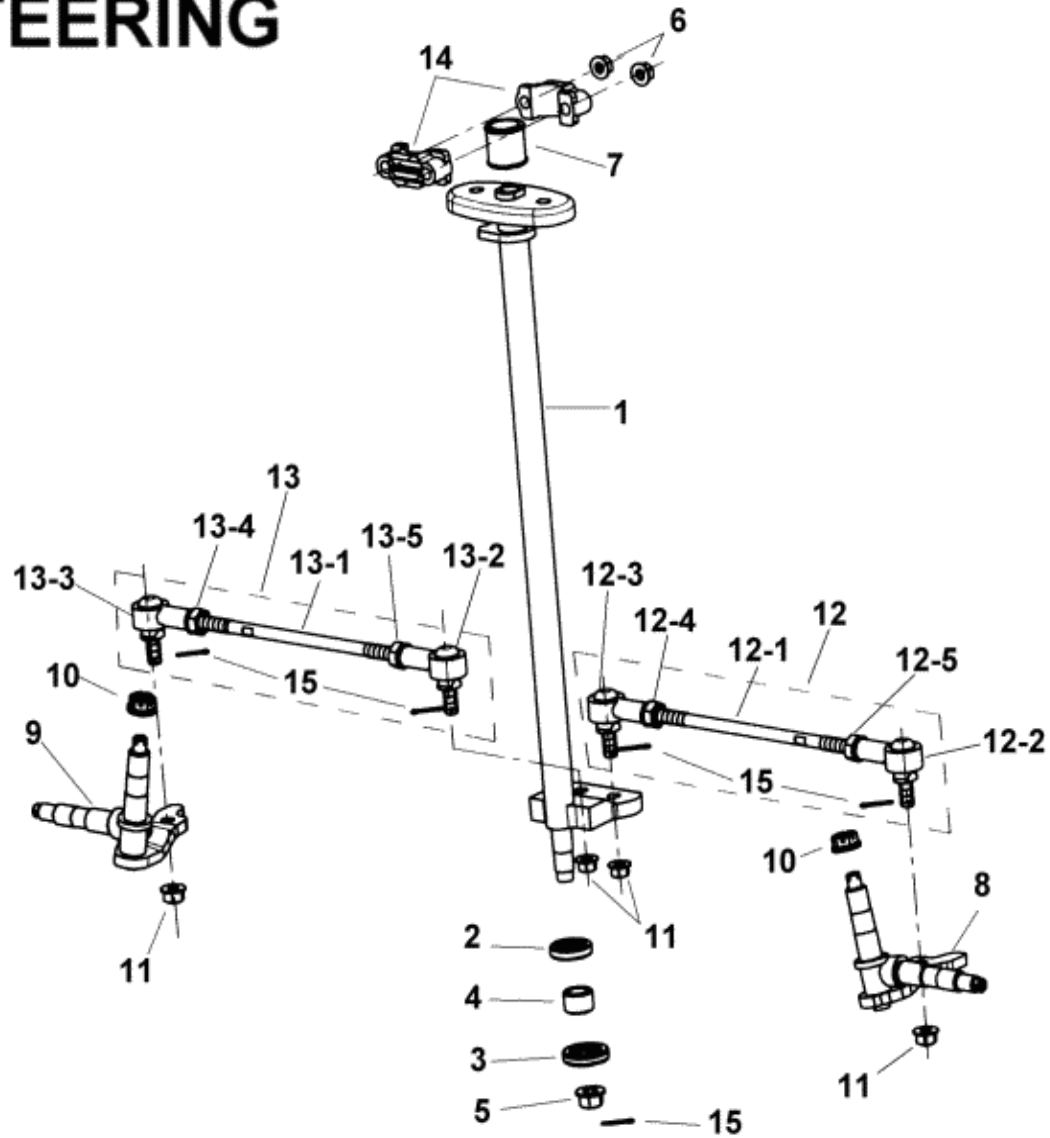
ITEM	PART NO.	NAME	Q'TY	品名	VIN NC COUNTRY
25		REAR WHEEL AXLE			U.S U.K H.L C.A A.L
25-1	D2301-9EA0-0000	REAR AXLE	1	後輪軸	
25-2	D0110-9EF0-0000	DRIVE CHAIN ASSY(28T)	1	後鏈齒輪總成	
25-2-1	D0111-9EF0-0000	SPROCKET HOLDER,REAR	1	後鏈齒輪固定座	
25-2-2	D1111-9EA0-0000	GEAR (520×28T)	1	齒輪	
25-2-3	D2706-9EA0-0000	STUD(M10)	4	螺栓	
25-2-4	I5611-10200	NUT,HEXAGON CHECK(M10)	4	六角防鬆螺帽	
25-3	D2302-9EA0-0000	NUT,REAR WHEEL AXLE(M28×1.5)	2	後軸承螺帽	
25-4	D0100-9EB0-0000	DRIVE CHAIN(#520)	1	鏈條	
25-4-1	D0104-9EA0-0000	MASTERLINK (#520)	1	鏈條接頭(#520)	
25-5	D0510-5EE9-0000	CHAIN PROTECTIVE COVER,UPPER	1	鍊條防護蓋	
25-6	I0149-08030	BOLT, FLANGE (M8×30)	2	凸緣螺栓	

## 26.SWING ARM SUB 、PROTECT COVER



ITEM	PART NO.	NAME	Q'TY 品名	VIN NC COUNTRY
26		SWING ARM SUB		U.S U.K H.L C.A A.L
26-1	E220A-9EF0-0000	SWING ARM SUB ASSY	1 後叉總成	
26-1-1	E2208-5EA0-0000	SWING ARM OIL LINER(φ20)	2 後叉含油襯套	
26-1-2	E2202-5EA0-0000	CHAIN TENSIONER ROLLER	1 橡膠軸套	
26-2	E2209-5EA0-0000	SWING ARM SPACER (φ20×14.1×25)	1 後叉隔筒	
26-3	E2205-5EA0-0000	SWING ARM SEAL COVER(30.8×38.5×7×14)	2 後叉封套	
26-4	I0149-08030	BOLT,FLANGE (M8×30)	1 凸緣螺栓	
26-5	I5611-08200	NUT,FLANGE CHECK(M8)	1 凸緣防鬆螺帽	
26-6	E2201-5EA0-0000	SWING ARM SET BOLT(M14×290)	1 後叉裝置螺栓	
26-7	I5611-14200	NUT,FLANGE CHECK(M14)	1 凸緣防鬆螺帽	
26-8	D3617-5EE0-0000	REAR BRAKE PROTECTIVE COVER	1 後煞車防護蓋	
26-9	I0149-08012	BOLT,FLANGE(M8×12)	2 凸緣螺栓	
26-10	D0101-5EA0-0000	PROTECT COVER	1 防護蓋	
26-11	I9901-08100	SPRING WASHER(φ8)	2 彈簧墊片	
26-12	D0120-9EA0-0000	ADJUSTER, CHAIN	1 鏈條調整器	
26-13	I0149-08016	BOLT,FLANGE (M8×16)	2 凸緣螺栓	

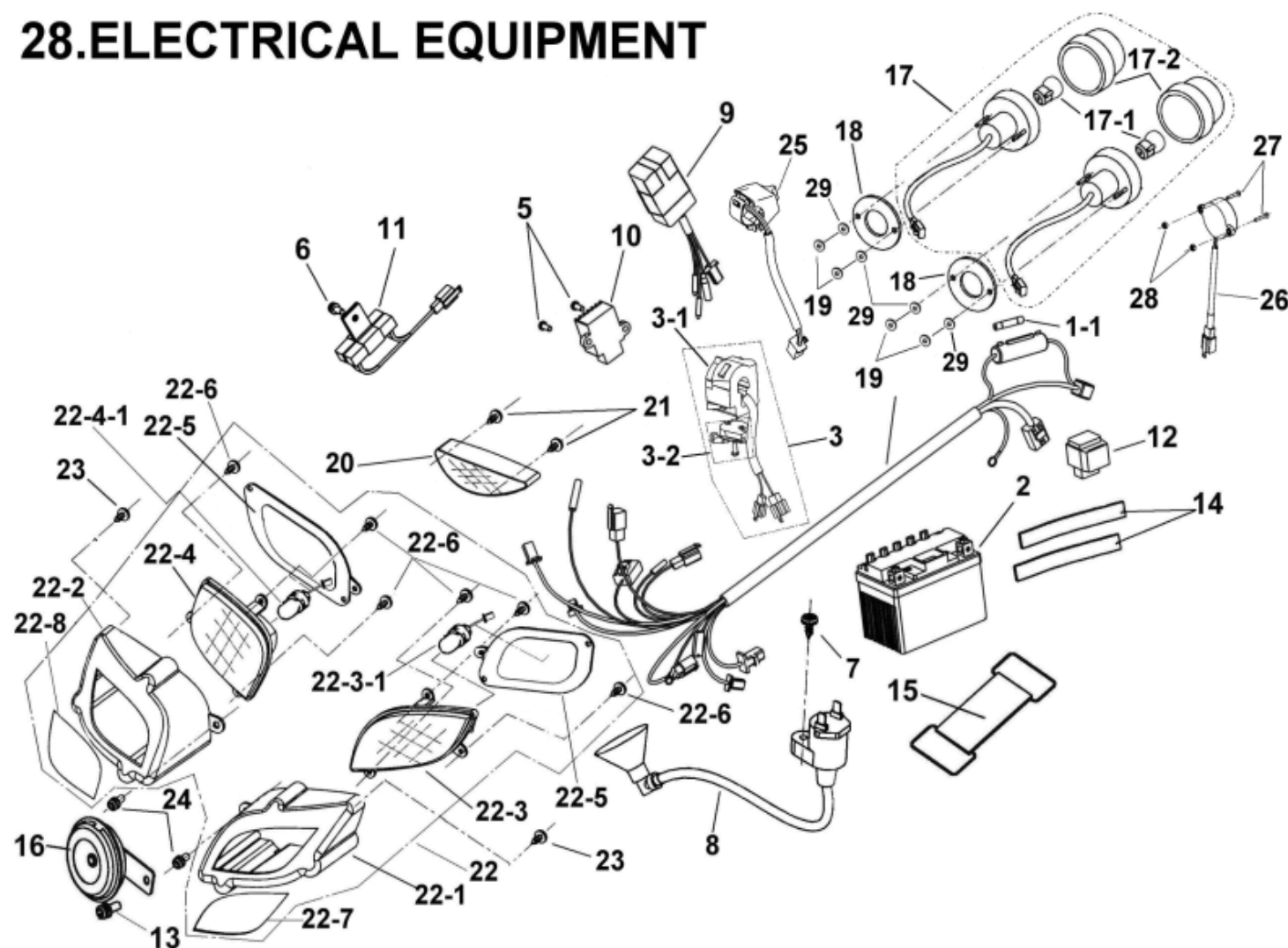
## 27. STEERING





ITEM	PART NO.	NAME	Q'TY	品名	VIN NC COUNTRY
27		STEERING		轉向系統	U.S U.K H.L C.A A.L
27-1	E3200-5EA0-9000	SHAFT ASSY., STEERING	1	轉向桿總成	
27-2	E3201-5EA0-0000	OIL SEAL(ψ18×ψ32×7)	1	油封	
27-3	I3102-5AC0-0000	OIL SEAL(ψ22×ψ35×7)	1	油封	
27-4	D4620-5EA0-0000	INNER SPACER(ψ15×ψ21.7×15)	1	內定距套	
27-5	I5611-14200	NUT,FLANGE CHECK(M14)	1	凸緣防鬆螺帽	
27-6	I5611-08200	NUT,FLANGE CHECK (M8)	2	凸緣防鬆螺帽	
27-7	E3225-5EA0-0000	PU BUSH SLEEVE, STEERING SHAI	1	PU襯套	
27-8	E0205-4HA0-0000	KNUCKLE, LEFT ASSY	1	前輪轉向軸總成(左)	
27-9	E0215-4HA0-0000	KNUCKLE, RIGHT ASSY	1	前輪轉向軸總成(右)	
27-10	I5550-20000	NUT,NYLON(M10)	2	尼龍螺帽	
27-11	I5611-10200	NUT,FLANGE CHECK (M10)	4	凸緣防鬆螺帽	
27-12	E0258-5EA0-0000	STEERING TIE-ROD ASSY., LEFT	1	轉向拉桿總成(左)	
27-12-1	E0251-5EA0-0000	BOLT,STUD	1	雙頭牙螺栓	
27-12-2	E0255-FIA0-0000	UNIVERSAL JOINT(L)	1	萬向頭(左牙)	
27-12-3	E0256-FIA0-0000	UNIVERSAL JOINT(R)	1	萬向頭(右牙)	
27-12-4	E0252-5EA0-0000	NUT(R)	1	螺帽(右牙)	
27-12-5	E0253-5EA0-0000	NUT(L)	1	螺帽(左牙)	
27-13	E0259-5EA0-0000	STEERING TIE-ROD ASSY., RIGHT	1	轉向拉桿總成(右)	
27-13-1	E0251-5EA0-0000	BOLT,STUD	1	雙頭牙螺栓	
27-13-2	E0255-FIA0-0000	UNIVERSAL JOINT(L)	1	萬向頭(左牙)	
27-13-3	E0256-FIA0-0000	UNIVERSAL JOINT(R)	1	萬向頭(右牙)	
27-13-4	E0252-5EA0-0000	NUT(R)	1	螺帽(右牙)	
27-13-5	E0253-5EA0-0000	NUT(L)	1	螺帽(左牙)	
27-14	E3202-9FA0-0000	HOLDER, STEERING SHAFT	2	轉向桿固定環	
27-15	I9900-25019	COTTER PIN	5	開口銷	

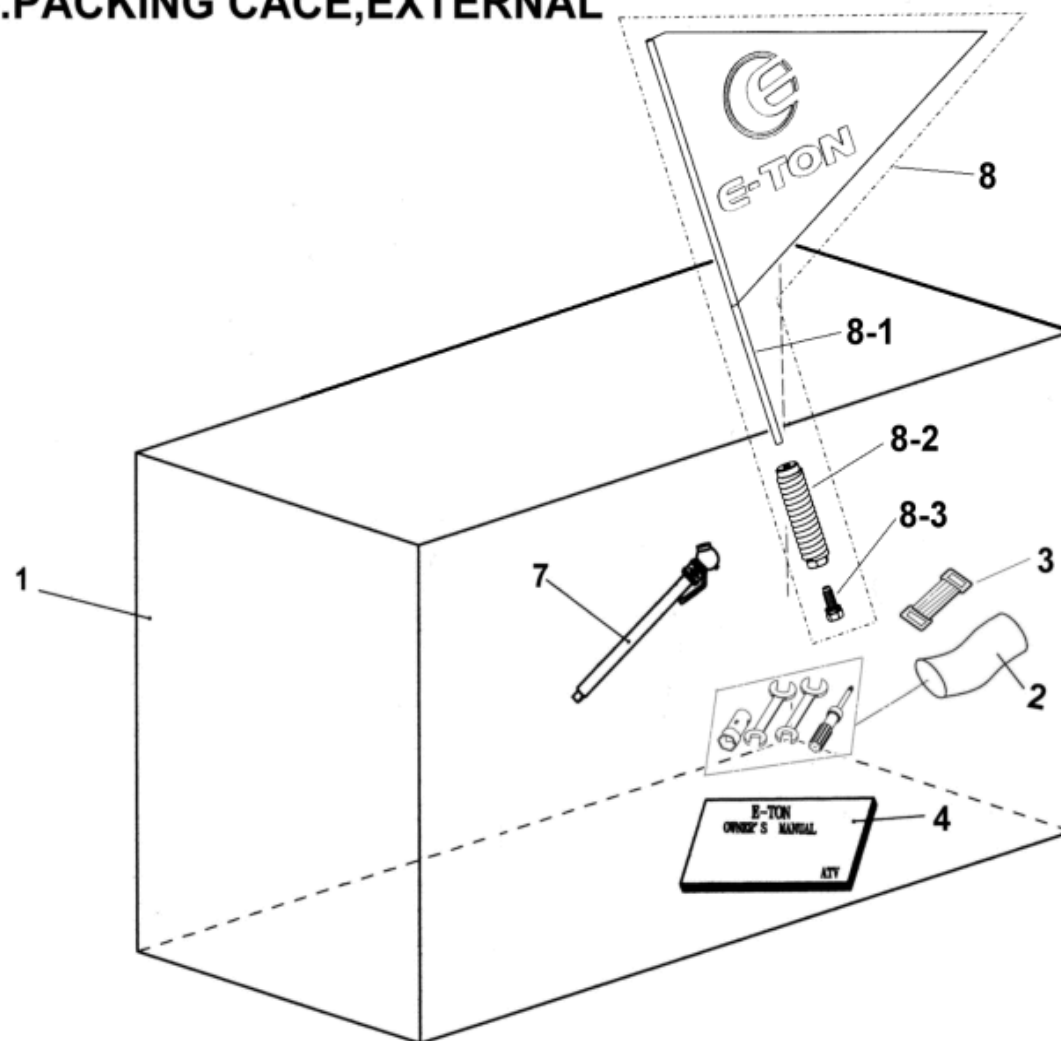
## 28.ELECTRICAL EQUIPMENT



ITEM	PART NO.	NAME	Q'TY	品名	VIN	NC	COUNTRY
28		ELECTRICAL EQUIPMENT			U.S	U.K	H.L C.A A.L
28-1	C2100-9EF0-0000	MAIN WIRE ASSY.	1	主配線			
28-1-1	C2010-5EA0-0000	FUSE (7A)	1	保險絲			
28-2	C1500-9FA0-0000	BATTERY (GTX5L-BS)	1	電瓶			
28-3	C5200-5EG0-0000	LEVER HOLDER ASSY., LEFT	1	左把手開關總成		N/A	N/A N/A
28-3-1	C5201-5EG0-0000	LEVER HOLDER , LEFT	1	左把手開關		N/A	N/A N/A
28-3-2	C5202-5EE0-0000	AIR CUT,LEVER	1	阻風門拉桿			
28-4		CANCEL.PREARRANGE		取消保留			
28-5	I8506-05016	SCREW(M5×12)	2	盤頭螺絲			
28-6	I8557-06012	SCREW WITH WASHER(M6x12)	1	盤頭螺絲附墊圈	N/A		N/A
28-7	I3401-05020-07	SCREW WITH WASHER(M5×20)	1	盤頭螺絲附墊圈			
28-8	C051A-5EE0-0000	IGNITION COIL ASSY.	1	點火線圈			
28-9	C0410-B07-0000	C.D.I. UNIT ASSY.	1	C.D.I.組件			
28-10	C1600-B00-0000	RECTIFIER&REGULATOR	1	整流器			
28-11	C5400-B00-0000	RESISTOR ASSY	1	電阻器	N/A		N/A
28-12	C5850-B00-0000	STARTER RELAY ASSY	1	起動開關組			
28-13	I8556-06012	SCREW,WITH WASHER(M6×12)	1	盤頭螺絲附墊圈			
28-14	C1501-9FA0-0000	FOAM STICK,BATTERY	2	電瓶海綿條			
28-15	C1502-9ED0-0000	RUBBER FIX TAPE,BATTERY(175L)	1	電瓶固定束帶			
28-16	C8110-5EE0-0000	HORN	1	喇叭			
28-17	C5031-5EE0-0000	TAIL LIGHT	2	後煞車燈			
28-17-1	C5004-5EE0-0000	BULB(12v 21/5w)	2	後煞車燈泡			
28-17-2	C5005-5EE0-0000	TAIL LAMP CASING	2	後煞車燈殼			
28-18	C5035-5EE0-0000	TAIL LIGHT RUBBER	2	後煞車燈橡膠墊片			

ITEM	PART NO.	NAME	Q'TY	品名	VIN	NC	COUNTRY
28		ELECTRICAL EQUIPMENT			U.S	U.K	H.L C.A A.L
28-19	I4111-05100	SPGWASHER(ψ5.2×ψ9.3×1)	4	彈簧墊圈			
28-20	C505A-5EE0-0000	LED COMP	1	LED燈			
28-21	I2804-04013-5C	SELF-TAPPING SCREW(M4×13)	2	自攻螺絲			
28-22	C503A-5EE0-1000	HEAD LIGHT ASSY.	1	頭燈總成		N/A	N/A N/A N/A
	C503A-5EE0-0000	HEAD LIGHT ASSY.	1	頭燈總成	N/A		
28-22-1	C5070-5EE0-0000	HEAD LIGHT COVER (L)	1	左頭燈罩			
28-22-2	C5080-5EE0-0000	HEAD LIGHT COVER (R)	1	右頭燈罩			
28-22-3	C5020-5EE0-0000	HEAD LIGHT (L)	1	左頭燈			
28-22-3-1	C5003-5EE0-0000	BLUB ASSY.(12v 10w)	1	頭燈燈泡座總成			
28-22-4	C5030-5EE0-0000	HEAD LIGHT (R)	1	右頭燈			
28-22-4-1	C5003-5EE0-0000	BLUB ASSY.(12v 10w)	1	頭燈燈泡座總成			
28-22-5	C5021-5EE0-0000	HEAD LIGHT RUBBER	2	頭燈橡膠墊片			
28-22-6	I2804-04013-5C	SELF-TAPPING SCREW(M4×13)	6	自攻螺絲			
28-22-7	H7111-5EE0-0000	STICKER,HAD LIGHT (L)	1	頭燈鏡面貼紙(左)		N/A	N/A N/A N/A
28-22-8	H7112-5EE0-0000	STICKER,HAD LIGHT (R )	1	頭燈鏡面貼紙(右)		N/A	N/A N/A N/A
28-23	I7707-04016	SELF-TAPPING SCREW(M4×16)	2	自攻螺絲			
28-24	I8556-06020	SCREW,CROSS RECESS HEAD	2	圓頭十字螺絲			
28-25	C5300-9EF0-0000	SHIFT SWITCH	1	變檔開關			
28-26	C8400-EMA0-0000	BUZZER	1	蜂鳴器			
28-27	I2600-03015	SCREW,FLUSH(M3×15)	2	十字平頭螺絲			
28-28	I2020-30001	NUT, NYLON	2	尼龍螺帽			
28-29	I2140-50001	WASHER(ψ5.2×ψ10×1)	4	平墊圈			

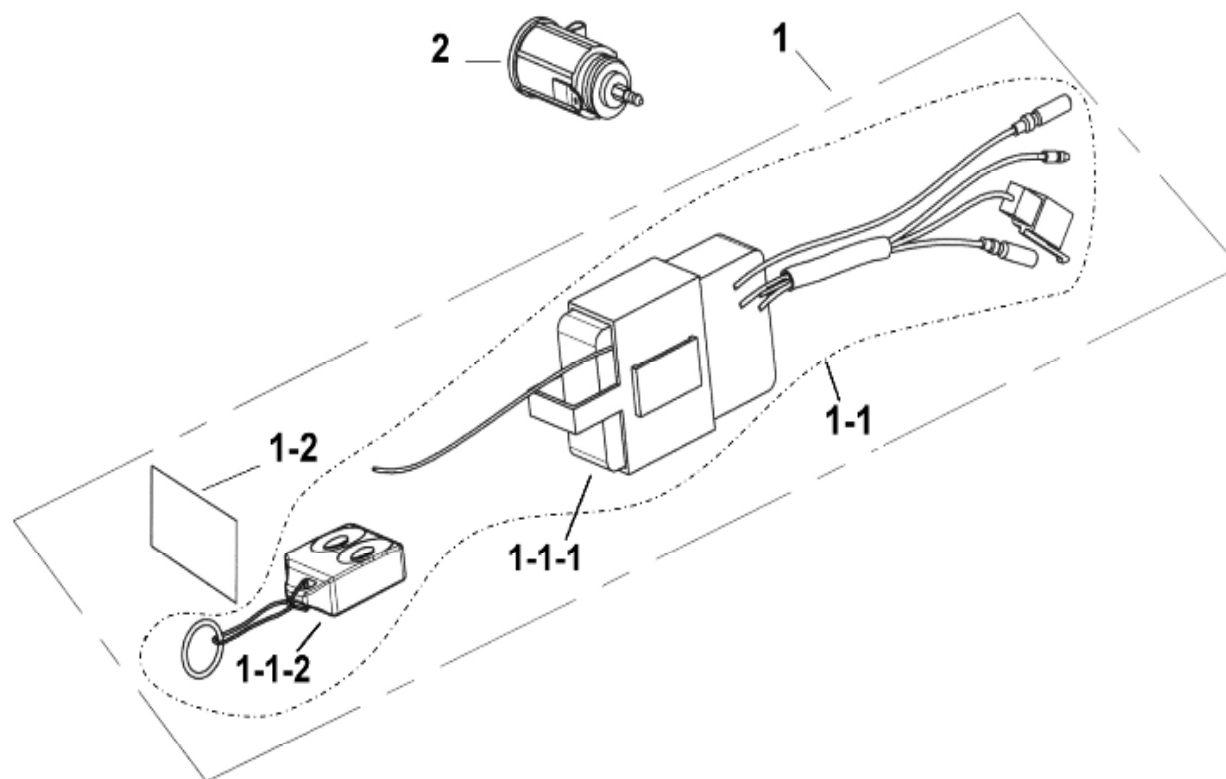
## 29.PACKING CACE,EXTERNAL



ITEM	PART NO.	NAME	Q'TY 品名	VIN NC COUNTRY
29		PACKING CASE,EXTERNAL	包裝外箱	U.S U.K H.L C.A A.L
29-1	H9500-5EE0-0000	PACKING CASE,EXTERNAL	1 包裝外箱	
29-2	H9020-9FA0-0000	TOOL SET	1 工具包	
29-3	H9021-9FA0-0000	RUBBER CLAMP, TOOL BOX	1 工具包固定束帶	
29-4	H990A-9EF0-0000	OWNER'S MANUAL ASSY	1 使用手冊總成	N/A N/A
	H990A-9EF9-0000	OWNER'S MANUAL ASSY	1 使用手冊總成	N/A N/A N/A
29-4-1	H9900-9EF0-0000	OWNER'S MANUAL	1 使用手冊	
29-5		CANCEL,PREARRANGE	取消,保留	
29-6		CANCEL,PREARRANGE	取消,保留	
29-7	H9022-5EA0-0000	TIRE PRESSURE GAUGE	1 胎壓計	
29-8	H840A-9EF0-0000	FLAG HOLDER ASSY	1 旗桿總成	N/A N/A N/A N/A
29-8-1	H8401-9EF0-0000	FLAG HOLDER COMP.	1 旗桿組	N/A N/A N/A N/A
29-8-2	H8402-9EF0-0000	FLAG HOLDER BASE	1 旗桿座	N/A N/A N/A N/A
29-8-3	I3415-08016-0C	SCREW	1 螺絲	N/A N/A N/A N/A

ITEM	PART NO.	NAME	Q'TY	品名	VIN NC COUNTRY
30		MANUAL CHOKE KIT			U.S U.K H.L C.A A.L
30-1	A611A-5EG0-0000	MANUAL CHOKE KIT	1	手動阻風門小修包	
4-5-2	A6110-B02-0000	MANUAL CHOKE COMP	1	手動啓動組	
4-9	A7920-B02-0000	AIR CUT CABLE	1	阻風門線	
28-3	C5200-5EG0-0000	LEVER HOLDER ASSY., LEFT	1	左把手開關總成	
28-3-1	C5201-5EG0-0000	LEVER HOLDER , LEFT	1	左把手開關	
28-3-2	C5202-5EE0-0000	AIR CUT,LEVER	1	阻風門拉桿	

## 31.ACCESSORIES





ITEM	PART NO.	NAME	Q'TY	品名	VIN NC COUNTRY
31		ACCESSORIES			U.S U.K H.L C.A A.L
31-1	C2104-9EF0-0000	REMOTE CONTROL SWITCH ASSY	1	遙控開關總成	
31-1-1	C2105-9EF0-0000	REMOTE CONTROL SWITCH COME	1	遙控開關組	
31-1-1-1	C2106-9EF0-0000	RECEIVE	1	接收器	
31-1-1-2	C2107-9EF0-0000	REMOTE CONTROL (310MHZ)	1	遙控器	
31-1-2	H7133-9EF0-0000	STICKER, WARNING REMOTE CONTROLLER	1	遙控器警告貼紙	
31-2	C1802-FIB0-0000	POWER, SUPPLY	1	電源供應器	